

Eolias,  
Outdoor Salina club  
armchair  
by Antonio Citterio

**kettal**

# Outdoor Salina club armchair

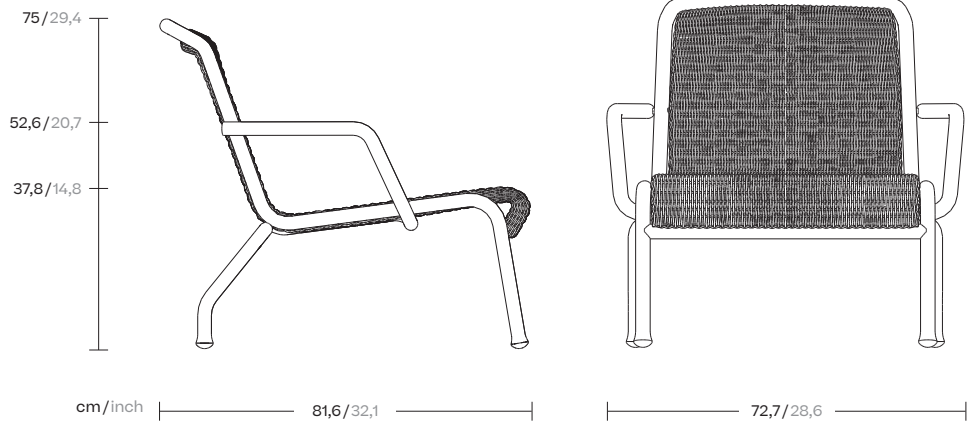
Designer  
Antonio Citterio

Collection  
Eolias

Reference  
KSB200800

1/4

cm/inch



The Eolias collection by Kettal was born with the aim of creating versatile products, that work in both outdoor and indoor environments. The focus is on sustainability, thanks to the use of natural and synthetic materials such as aluminium and wicker.



kettal

# Outdoor Salina club armchair

Designer  
Antonio Citterio

Collection  
Eolias

Reference  
KSB200800

2/4

## Materials

### Aluminium

Antioxy, Heavy Load, Resistant  
En-1421, Kettalize-It, Anti-  
Scratch, Easy Clean,  
Flame Retardant M1, Eco Friendly  
Ecoembes Recycling Process

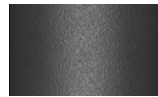
### Fabric

Heavy Load 100.000 Cycles,  
Heavy Load Resistant  
1000 Decitex, Kettalize-It,  
Resist U.v. En-581-4, Easy Clean,  
Abrasion, Resistance 30.000  
Cycles, Quickdry

Bucket syntetic fiber braided

## Structure Colour Options

## Terrain Coatings



Slate Stone  
01C



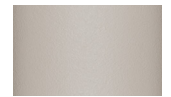
Mysty Smoke  
02C



Ash  
03C



Bone  
04C



Tuff  
05C



Wet Stone  
06C



Sand Dune  
07C



Dry Clay  
08C



Arabica  
09C



Sepia  
19C



Rose Canyon  
16C



Blossom  
20C



Ruby Dust  
18C



Sunset Glow  
17C



Terrarosa  
15C



Terracota  
14C



Amber  
13C



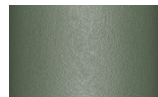
Ginger Root  
12C



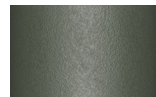
Desert Storm  
11C



African Savannah  
10C



Spring Meadow  
28C



Kombu  
29C



Forest Stream  
27C



Sea Moss  
26C



Glacier Ice  
25C



Polar Sky  
24C



Nightfall  
23C



Indigo  
22C



Wild Lupin  
21C



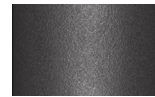
Galena  
33C



Bronze  
30C



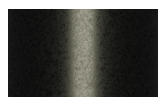
Corten  
31C



Manganese  
32C

## Structure Colour Options

## Terrain Lustre



Noir d'Ivoire  
CH2

# Outdoor Salina club armchair

Designer  
Antonio Citterio

Collection  
Eolias

Reference  
KSB200800

3/4

## Other Characteristics

 Stackable x2

## Maintenance

Clean with mild soap using sponge or cloth. Be gentle while cleaning, do not scrub aggressively the fabric. Once cleaned please make sure you remove soap excess.

In case of aggressive stains clean with diluted household bleach.

Clean stains promptly. The longer it remains, more difficult will be to remove.

Once cleaned the fabric steam iron the fabric. Just use steam, be carefull NOT placing the iron directly in the fabric it will get damage.

## Seat/Back Cushion

## Terrain Laminate Elements



Charcoal  
01L



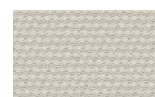
Cumulus  
02L



Fog  
09L



Porous Grey  
08L



Snowcap  
03L



Moonstone  
07L



Karakum  
06L



Cambium  
12L



Raku  
11L



Clove  
13L



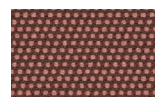
Desert Rose  
14L



Pink Salt  
15L



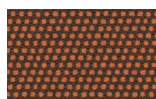
Pacific Dawn  
16L



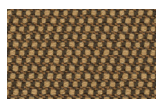
Acer  
17L



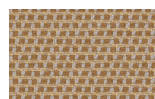
Firetail  
18L



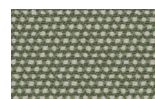
Glowing Ember  
19L



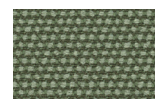
Tiger Eye  
05L



Goldrush  
04L



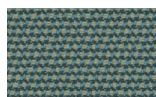
Sea Heart  
22L



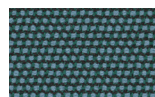
Heath  
21L



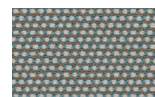
Peppercorn  
20L



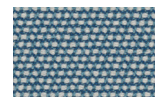
Rock Pool  
23L



Tropic  
24L



Skylark  
25L



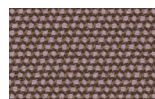
Nautica  
26L



Blue Reef  
27L



Cosmos  
28L



Amethyst  
29L

# Outdoor Salina club armchair

Designer  
Antonio Citterio

Collection  
Eolias

Reference  
KSB200800

4/4

## Seat/Back Cushion

## Tonale Lino



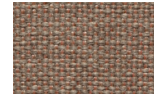
White Chia  
61L-61T



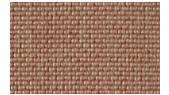
Fennel  
62L-62T



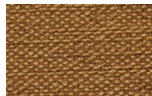
Elwendia  
63L-63T



Brown Mustard  
64L-64T



Kampot  
65L-65T



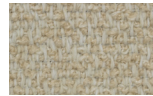
Fenugreek  
66L-66T

## Seat/Back Cushion

## Tonale Boucle



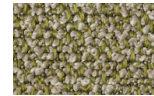
White Poppy  
81L-81T



Sesame  
82L-82T



Anise  
83L-83T



Dill  
84L-84T



Allspice Jamaica  
85L-85T



Birds Foot  
86L-86T

## Piping Colour Options

## Piping



Rosemary  
MR1



Whole Clove  
MR2



Mustard Grain  
MR3



Sea Salt  
MR4



Ground Pepper  
MR5



Black Salt  
MR6



Poppy Seed  
MR7



Rose Harissa  
MR8