



Contemporary
Traditional
Culture

Look where you are walking, love what you are walking on; beneath your feet we have created a whole world of experiences.

Welcome to NOW CARPETS

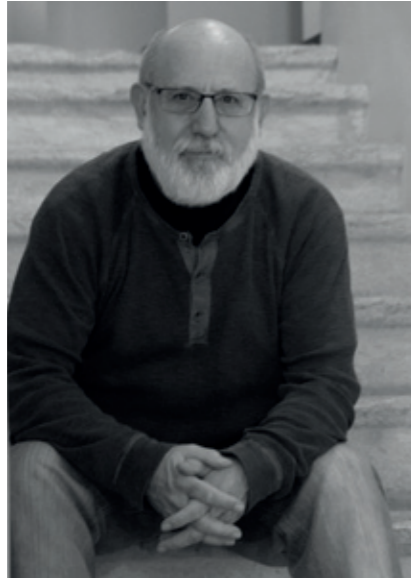
*Mira por donde pisas, ama por donde pasas,
porque debajo de ti hemos creado todo un
mundo para vivirlo.*

Bienvenido a NOW CARPETS.

*Regardez où vous marchez, aimez là où vous
marchez car sous cet endroit, nous avons inventé
tout un monde à découvrir.*

Bienvenue chez NOW CARPETS





Miguel Paracuellos

My colleagues have asked me to briefly highlight what has been happening since our previous catalogue was published, so here goes...

Two new designers, Arik Levy and Inma Bermúdez, have joined our team. Both of them offer their modern, cosmopolitan vision of our product. We are now present in all five continents, with offices in New York and Abu Dhabi and we have been commissioned major projects that provide us with greater experience and a more global concept.

Our passion for a job well done has been evident at the international shows and events we have participated in and magazines such as Interior Design, Surface or Wallpaper have showcased some of our key projects.

We have stepped up our “à la carte carpet” service because we believe that each project is unique and each design can be adapted to even the smallest detail.

We have put into operation a “door-to-door” logistics service so that our customers can concentrate on their work without having to think about anything else.

The quality of our products and their compliance with the technical requirements of projects is certified by international companies.

Our moral commitment: RUGMARK certifies that child labour is not used to produce our rugs and carpets.

And last but not least, we are just as enthusiastic as ever about our company project that, without your help and that of the NOWCarpets team, would never have been possible.

We will never lose our passion for a job well done and, of course, our passion for carpets.

Many thanks,

Mis compañeros me piden que destaque brevemente lo acontecido desde nuestro anterior catálogo. Lo intento con la misma ilusión con que siempre lo hemos hecho.

Se han incorporado nuevos diseñadores, Arik Levy e Inma Bermúdez; y todos ellos aportan una visión cosmopolita y actual de nuestro producto. Estamos presentes en los cinco continentes con oficinas en New York y Abu Dhabi. Realizamos grandes proyectos que nos aportaron más experiencia y una concepción más global.

Ferias y eventos internacionales han sido testigo de nuestra pasión por un trabajo bien hecho. Y revistas como Interior Design, Surface o Wallpaper, se han hecho eco de nuestros proyectos.

Hemos reforzado nuestro servicio de “alfombras a la carta”, porque entendemos que cada proyecto es único y cada diseño debe poder adaptarse hasta el más mínimo detalle.

Hemos introducido Nuestro servicio logístico “puerta a puerta”, para que nuestros clientes se centren solo en su trabajo .

Compañías internacionales Certifican la calidad de nuestros productos y los requisitos técnicos necesarios en los proyectos. Compromiso ético: RUGMARK, que certifica la no utilización de mano de obra infantil en la elaboración de nuestras alfombras.

Continuamos ilusionados en nuestro proyecto, que sin su apoyo y el del equipo de NOWCarpets, no hubiera sido posible.

Que no perdamos nunca nuestra pasión por el trabajo bien hecho y, claro está, nuestra pasión por las alfombras.

Muchas gracias.

Mes collègues me demandent de raconter brièvement tout ce qui s'est passé depuis notre dernier catalogue. Je le fais toujours avec la même illusion que celle qui nous caractérise depuis si longtemps.

De nouveaux créateurs font désormais partie de l'équipe, Arik Levy et Inma Bermúdez. Ils apportent tous et chacun une vision cosmopolite et actuelle de notre produit. Nous sommes présents sur les cinq continents et implantés à New York et à Abu Dhabi. Nous réalisons d'importants projets qui nous ont permis d'acquérir une plus grande expérience ainsi qu'une conception plus globale.

Nous avons été présents dans de nombreux salons et événements internationaux qui ont accueilli notre passion pour le travail bien fait. Mais aussi des revues comme Interior Design, Surface ou Wallpaper qui ont parlé de nos projets.

Nous avons renforcé notre service de « tapis à la carte » car nous savons que chaque projet est unique et que chaque création doit pouvoir être personnalisée jusqu'au moindre détail.

Nous avons créé notre service logistique « porte à porte » pour que nos clients n'aient à se centrer que sur leur propre travail.

Des entreprises internationales ont certifié la qualité de nos produits ainsi que les exigences techniques nécessaires à nos projets. Engagement éthique : RUGMARK qui certifie la non-utilisation de main d'œuvre infantile dans l'élaboration de nos tapis.

Nous apportons une grande illusion à notre projet qui, sans vos efforts et ceux de l'équipe de NOW Carpets, n'aurait jamais été possible.

Ne perdons jamais notre passion pour le travail bien fait et, bien évidemment, notre passion pour les tapis.

Merci énormément.



Our team. How and where.
Nuestro equipo, cómo y dónde.
Notre équipe. Comment et où.

We have a team that has over 30 years of experience and that has undertaken major projects, offering solutions and an optimal service for our customers. Our staff at source keeps direct close control on quality.

Our moral commitment: RUGMARK certifies that child labour is not used to produce our rugs and carpets.



Contamos con un equipo de trabajo de más de 30 años de experiencia que ha realizado grandes proyectos, acercando nuestra firma y dando soluciones y un mejor servicio a nuestros clientes. Nuestro personal en origen ejerce directamente un estrecho control de calidad.

Compromiso ético: RUGMARK, que garantiza la no utilización de mano de obra infantil en la elaboración de nuestras alfombras.

Notre équipe de travail qui a réalisé de grands projets est dotée d'une expérience de plus de 30 ans et rapproche notre entreprise de nos clients, en leur donnant toutes solutions et une grande qualité de service. Sur le lieu d'origine, nos employés réalisent directement un contrôle rigoureux de la qualité.

Engagement éthique : RUGMARK qui certifie la non-utilisation de main d'œuvre infantile dans l'élaboration de nos tapis.

**Manufacturing system.
Materials and certificates.
*Sistema de fabricación,
materiales y certificados.
Système de fabrication.
Matériaux et certificats.***

We work on a joint venture basis with our own looms with widths of up to 20 m. We use different production systems and various materials such as wool, silk, bamboo, linen, etc. according to our customers' requirements.

Centexbel (Belgian Institute of Technology) and SGS certify the quality of our materials and the technical requirements demanded by professionals. We use Scotchguard™ which helps to repel and clean stains. And with the guarantee of NOW Carpets.

Trabajamos en Joint Venture con telares propios de hasta 20m de ancho. Utilizamos diferentes sistemas de producción y materiales diversos como lana, seda, bambú, lino, etc en función de las necesidades de nuestros clientes.

Centexbel (Institut Teknologi de Bélgica) y SGS certifican la calidad de nuestros materiales y requisitos técnicos que demandan los profesionales. Usamos Scotchguard, que ayuda a repeler y limpiar las manchas. Y la garantía de NOW Carpets.

Nous travaillons en joint venture avec nos propres métiers à tisser de plus de 20 m de large. Nous utilisons différents systèmes de production et des matériaux aussi divers que la laine, la soie, le bambou, le lin, etc. en fonction des besoins de nos clientes.

Centexbel (Institut technologique de Belgique) et SGS certifient la qualité de nos matériaux et caractéristiques techniques exigées par les professionnels. Nous utilisons Scotchguard™, qui aide à repousser l'humidité et à nettoyer les taches mais aussi la garantie de NOW Carpets.



Hand Knotted

This is a manual weaving technique on vertical looms that consists of hand tying knots. The greater the number of knots the better defined the design is. This system allows detailed creations to be produced and the carpets last longer.



Técnica de tejido manual en telar vertical que se lleva a cabo mediante nudos realizados a mano. A mayor número de nudos, mayor definición de los diseños. Este sistema permite una creatividad al detalle y mayor durabilidad.

Technique de tissage manuel sur métier vertical réalisée à l'aide de nœuds tissés à la main. Plus il y a de nœuds, plus la définition de nos créations est imposante. Ce système permet une créativité reposant sur les moindres détails et une plus grande durabilité.

Hand Tufted

This is a manual technique in which an artisanal tool is used to punch strands of wool into a stretched cotton or jute canvas to create different definitions and pile heights.



Esta técnica manual se realiza mediante una herramienta artesanal que sobre un boceto en tela de algodón o yute tensada se insertan hilos de lana permitiendo crear definiciones y conseguir alturas de pelo distintas.

Cette technique est possible grâce à un outil artisanal sur lequel un croquis en tissu coton ou en jute est tissé de fils de laine afin de créer les définitions et de permettre une densité de tissage plus importante.

Some of the systems. *Algunos sistemas. Certains des systèmes.*

Hand Loom Knotted

Using a manually operated loom, warp and weft threads are interwoven to achieve different finishes and textures produced with different materials.



Es un telar operado manualmente donde se entrelazan los hilos de la urdimbre y trama, permite diferentes acabados y texturas elaborados con diferentes materiales.

Il s'agit d'un métier à tisser manuel où sont mêlés entre eux les fils de chaîne et les fils de trame afin d'obtenir différentes finitions et textures élaborées avec divers matériaux.

Woven / Kilim

A system of interwoven threads on a flat surface and which is popularly known as kilim. Some of our outdoor carpets have been produced with this system using recycled polyester.



Sistema de hilos cruzados sin nudos sobre una superficie plana y que popularmente se conoce como kilim.. Algunas de nuestras alfombras outdoors han sido elaboradas en este sistema en poliéster reciclado.

Système de fils croisés sans nœuds sur une surface plane populairement connu sous le nom de kilim. Certains de nos tapis outdoors ont été élaborés grâce à ce système en polyester recyclé.

Some of the materials.
Algunos materiales.
Certains de ces matériaux.

Wool
Lana
Laine



Bamboo Silk
Bambú seda
Bambou soie



Bamboo handspun
Bambú hilado a mano
Bambou ilée à la main



Nylon
Nailon
Nylon



Banana
Plátano
Banane



Recycled Polyester
Poliéster reciclado
Polyester recyclé



PVC Twitchell USA



Hemp
Cáñamo
Chanvre



Custom carpets for projects. *Alfombras a la carta para proyectos.* *Tapis à la carte pour vos projets.*

Because every project is unique and worthy of special attention, we have increased our CUSTOM CARPET service to offer personalized carpets tailored to each customer's needs, either for individual projects or contract projects. Personalisation down to the very last detail to suit your needs and tastes. And with very short delivery times.

Porque cada proyecto es único y merece una atención especial, hemos reforzado nuestro servicio de ALFOMBRAS A LA CARTA, ofreciendo la posibilidad de realizar alfombras personalizadas y a la medida de cada cliente ya sea para proyectos individuales como para contract. Personalización hasta el último detalle según sus necesidades y gustos. Y con un plazo de entrega muy breve.

Car chaque projet est unique et mérite une attention spéciale, nous avons renforcé notre service de TAPIS À LA CARTE et proposons la possibilité de créer des tapis personnalisés et sur mesure pour chacun de nos clients, pour leurs projets individuels ou leurs contrats. Personnalisation jusqu'au moindre détail en fonction de vos besoins et vos goûts. Avec des délais de livraison très courts.



Because
every project
is unique



Personalization
Personalización
Personnalisation

YOUR OWN DESIGNS (CUSTOM RUGS)
TUS PROPIOS DISEÑOS (ALFOMBRAS A LA CARTA)
VOS PROPRES DESIGNS / TAPIS À LA CARTE

MATERIALS: WOOL, BAMBOO, VISCOSE, SILK,
 HEMP, LINEN, ETC...
DIFFERENT SIZES / MEASURES / COLORS

MATERIALES: LANA, BAMBÚ, VISCOSA,
 SEDA, CÁÑAMO, LINO, ETC...
DIFERENTES FORMAS / MEDIDAS / COLORES

MATÉRIAUX: LAINE, BAMBOU, VISCOSE, SOIE,
 CHANVRE, LIN, ETC ...
DIMENSIONS / MESURES / COULEURS

Specifications RESIDENTIAL
Especificaciones HOSPITALITY
Spécifications CONTRACT

Differentiation
Diferenciación
Différenciation

20 METERS / 66 FEET WIDE LOOM
80 METERS 87 YARDS LONG
HIGH DENSITY RUGS

TELARES 20 M. DE ANCHO
80 METROS LONGITUD
PRODUCTO ALTA DENSIDAD

MÉTIER À TISSER 20 M. DE LARGE
80 MÈTRES DE LONG
PRODUIT HAUTE DENSITÉ

ASTM D2859 / BASIC BAMBOO SILK
VTEC Laboratories Inc NYC
 FLAMMABILITY OF FINISHED TEXTILE
 FLOOR COVERING MATERIALS

INFLAMABILIDAD PARA SUELOS
TEXTILES

INFLAMMABILITÉ DES MATÉRIAUX
FINI DE REVÊTEMENT DE SOL
TEXTILE



Certificates
Certificados
Certificats



CFR part 1630: DOC FFI-70
 CFR part 1631: DOC FF2-70

TECHNOLOGICAL INSTITUTE
 CENTEXBEL · BELGIUM
 ISO 8302 RADIANT HEATING WIRE SYSTEM
 SCOTCHGARDTM TREATMENT Dirt repellent

INSTITUTO TECNOLÓGICO
 CENTEXBEL · BÉLGICA
 ISO 8302 CERTIFICADO HILO RADIANTE
 TRATAMIENTO SCOTCHGARDTM Repelente suciedad

INSTITUT DE TECHNOLOGIE
 CENTEXBEL · BELGIQUE
 ISO 8302 CERTIFICAT FIL RADIANT
 SCOTCHGARDTM TRAITEMENT anti-salissures



Added value *Valor añadido* *Valeur ajoutée*

Prestigious international designers give our carpets added value, offering a more cosmopolitan, cutting-edge vision and aesthetic appearance, whilst maintaining the warmth and comfort which are the essential elements of our brand.

Dan valor añadido a nuestras alfombras, reconocidos diseñadores internacionales, quienes aportan su visión más cosmopolita, con una estética más actual, sin olvidar la calidez y el confort, imprescindibles en nuestra marca.

Ils donnent une grande valeur ajoutée à nos tapis, ces créateurs de renom international qui apportent leur vision plus cosmopolite, reposant sur une esthétique plus moderne, sans toutefois oublier la chaleur et le confort, valeurs indispensables de notre marque.



Arik Levy
PARIS, FRANCE

Christian Ghion
PARIS, FRANCE



Francesc Rifé
BARCELONA, SPAIN



Stephanie Goto
NEW YORK, USA



Yumi Endo
NEW YORK, USA



Moneo Brock
MADRID, SPAIN



Michael Banks
LONDON, UK

Designers
Diseñadores
Designers



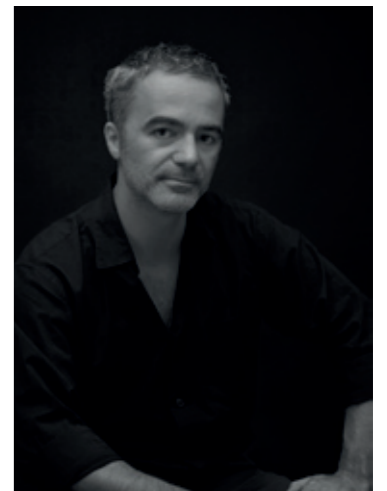
Inma Bermúdez
VALENCIA, SPAIN



Jose Albors
VALENCIA, SPAIN



Vicente Vidal
VALENCIA, SPAIN



Claudio Colucci
GENEVE, SWITZERLAND

NOW

NOW

Logistics and distribution *Logística y distribución* *Logistique et distribution*

WORLDWIDE DISTRIBUTION

Our door-to-door logistics service allows our customers to optimize their time and to concentrate on their work. We are fully aware that our commitment is not over until the carpet reaches its recipient.

DISTRIBUCIÓN MUNDIAL

Nuestro servicio logístico de puerta a puerta, permite a nuestros clientes optimizar su tiempo y concentrarse en su trabajo. Somos conscientes de que nuestro compromiso no finaliza hasta que la alfombra llega a su destinatario.

DISTRIBUTION MONDIALE

Notre service logistique porte à porte, permet à nos clients d'optimiser leur temps et de se concentrer sur leur travail. Nous savons que notre engagement ne s'achève que lorsque le tapis est livré à son destinataire.





ICFF NEW YORK, USA



Metropolis Magazine Award NEW YORK, USA



Event NEW YORK, USA

Shows and events *Ferias y eventos* *Salons et événements*

We have participated in shows such as MAISON & OBJECT in PARIS, NEW YORK ICFF, HD in LAS VEGAS, CUBIQUE in BERLIN, HÁBITAT SHOW in VALENCIA, amongst others; in international events such as Wine & Design and Spain's Great Match in New York, and we have offered conferences at venues such as Valencia or Melbourne. Furthermore, prestigious publications such as *Surface*, *Vogue*, *Wallpaper*, *Interior Design*, *AD*, *On diseño* or *Icon* amongst others, have reflected our work.

Hemos participado en ferias como MAISON & OBJECT PARÍS, NEW YORK ICFF, HD LAS VEGAS, CUBIQUE BERLÍN, FERIA HÁBITAT VALENCIA, entre otras; en eventos internacionales como Wine & Design y Spain's Great Match en Nueva York, y hemos ofrecido conferencias en lugares como Valencia o Melbourne. Asimismo, prestigiosas publicaciones como *Surface*, *Vogue*, *Wallpaper*, *Interior Design*, *AD*, *On diseño* o *Icon*, entre otras, se han hecho eco de nuestro trabajo.

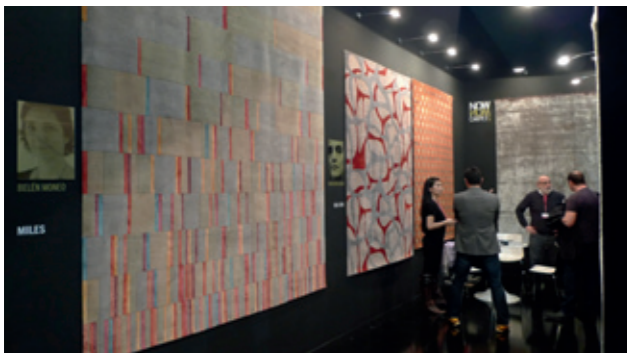
Nous avons participé à des salons comme MAISON & OBJECT PARÍS, NEW YORK ICFF, HD LAS VEGAS, CUBIQUE BERLÍN, FERIA HÁBITAT VALENCIA, entre autres ; à des événements internationaux comme Wine & Design et Spain's Great Match à New-York et organisé des conférences dans des villes comme Valencia ou Melbourne. Par ailleurs, de prestigieuses publications comme Surface, Vogue, Wallpaper, Interior Design, AD, On diseño ou Icon, ont longuement parlé de notre travail.



Valencia Habitat SPAIN



Ajar Pitch MELBOURNE, AUSTRALIA



MAISON&OBJET PARIS, FRANCE



ICFF NEW YORK, USA





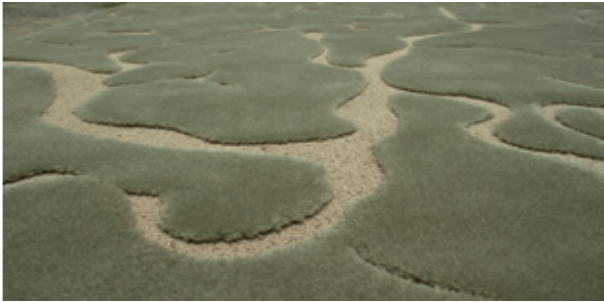
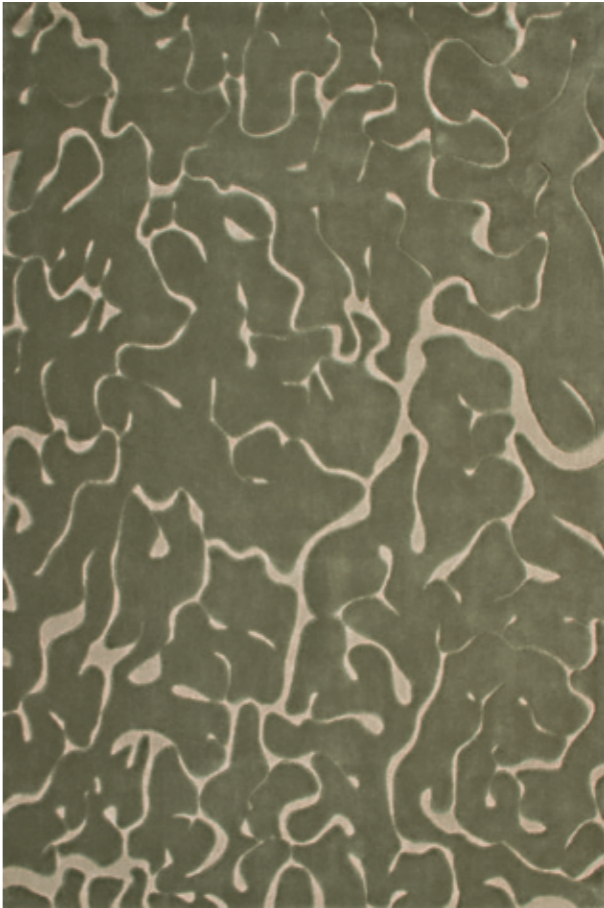
Huelva by Arik Levy



Huelva's inspiration



HAND TUFTED 100 LINES

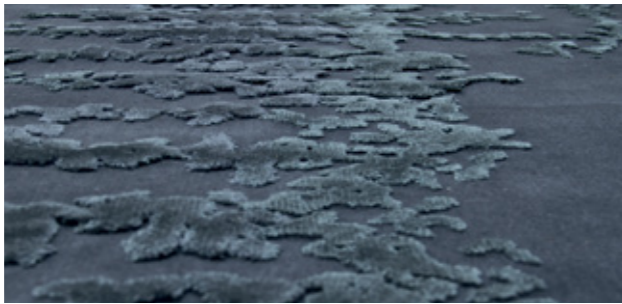


HAND TUFTED 100 LINES

Andalucia by Arik Levy

Andalucia's inspiration





Brazil by Arik Levy



Brazil's inspiration





Monegros by Arik Levy

Monegros' inspiration

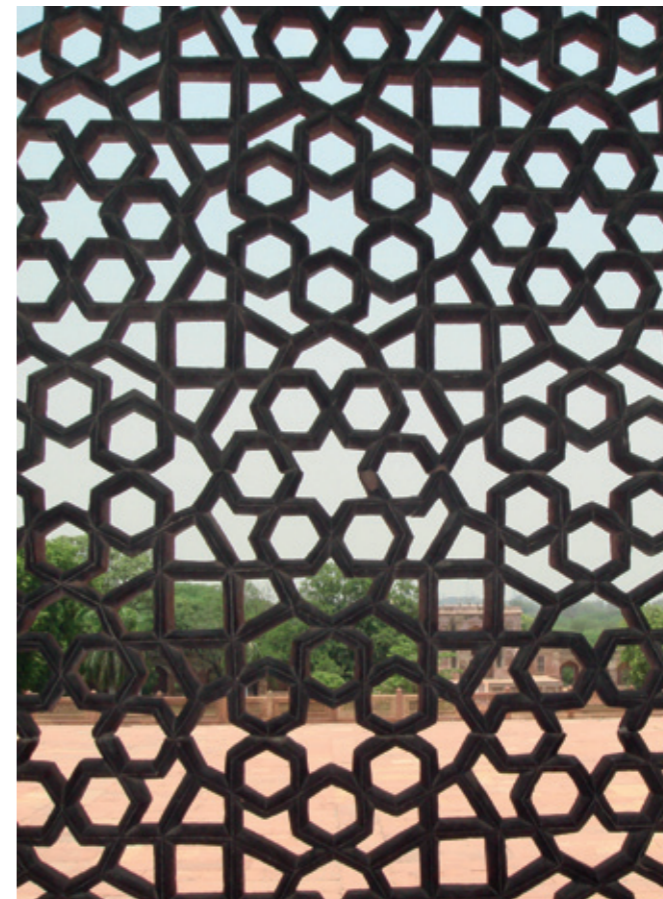


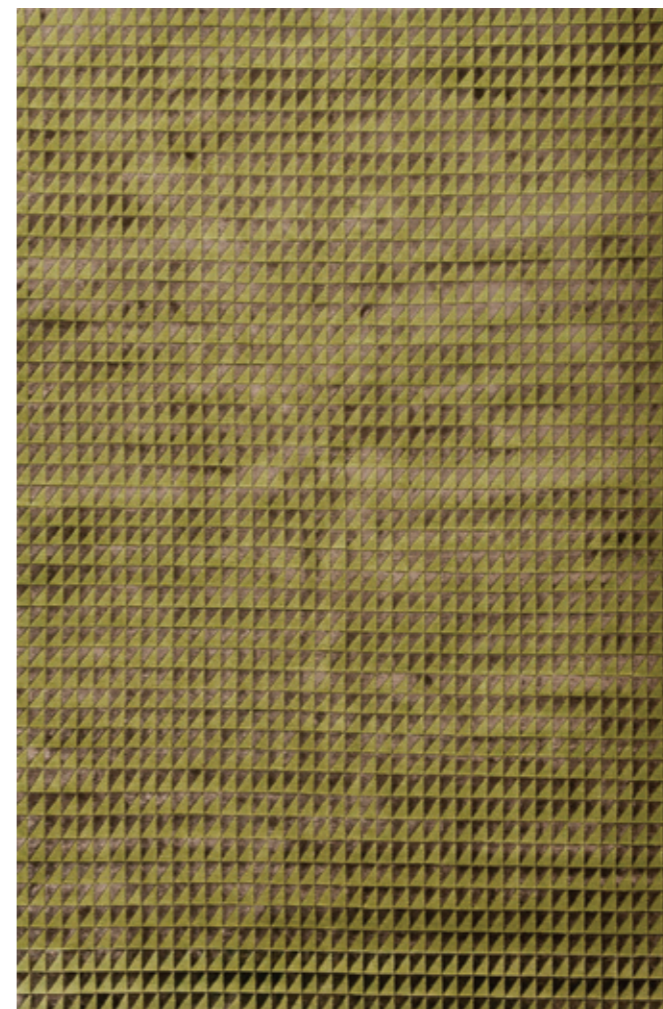


Kaila by Francesc Rifé



Kaila's inspiration





Raj by Francesc Rifé

Raj's inspiration





Straw by Francesc Rifé



Straw's inspiration



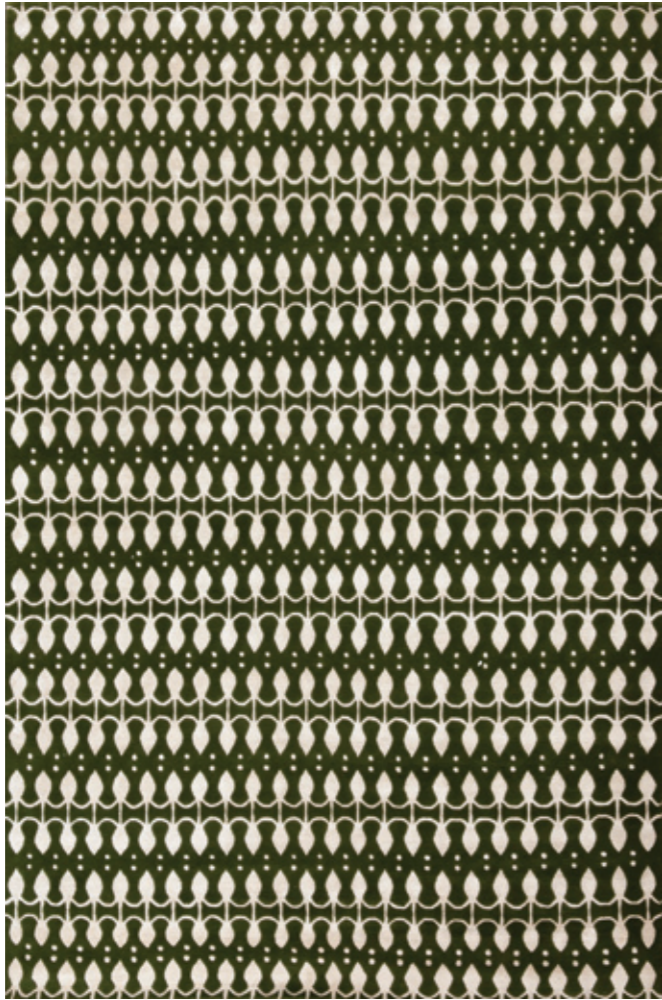


HAND KNOTTED

Mym by Francesc Rifé

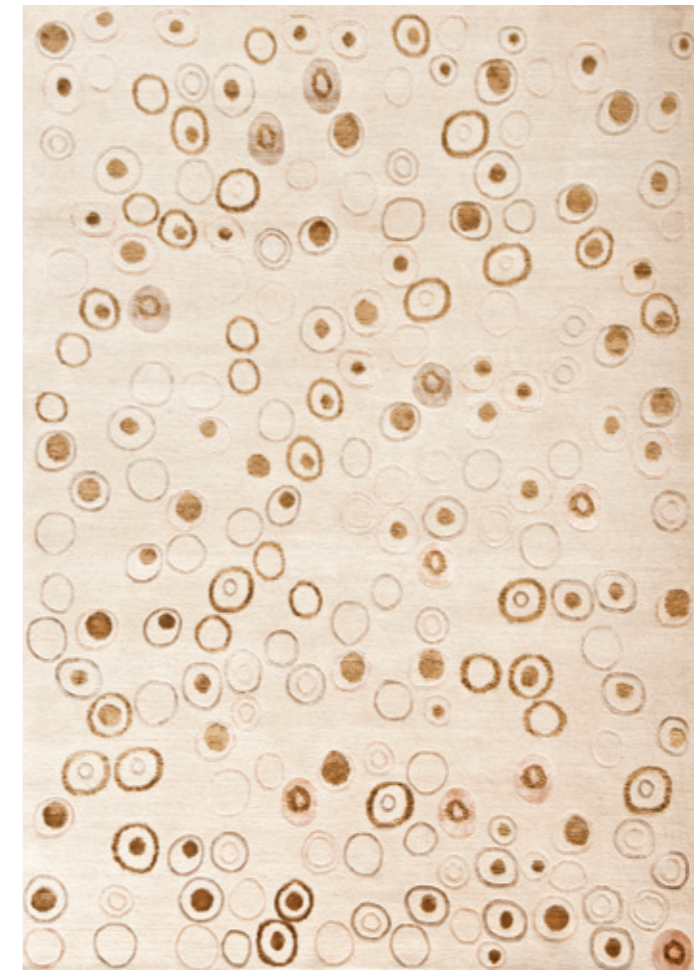
Mym's inspiration





Mou by Francesc Rifé





Rain by Francesc Rifé



Star by Christian Ghion

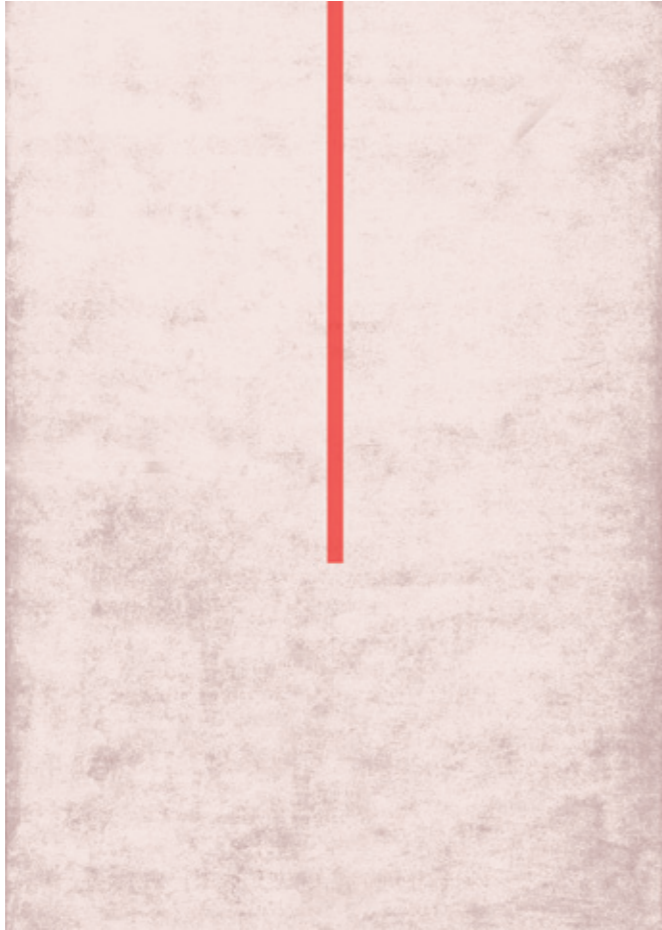




HAND KNOTTED

Language by StephanieGoto

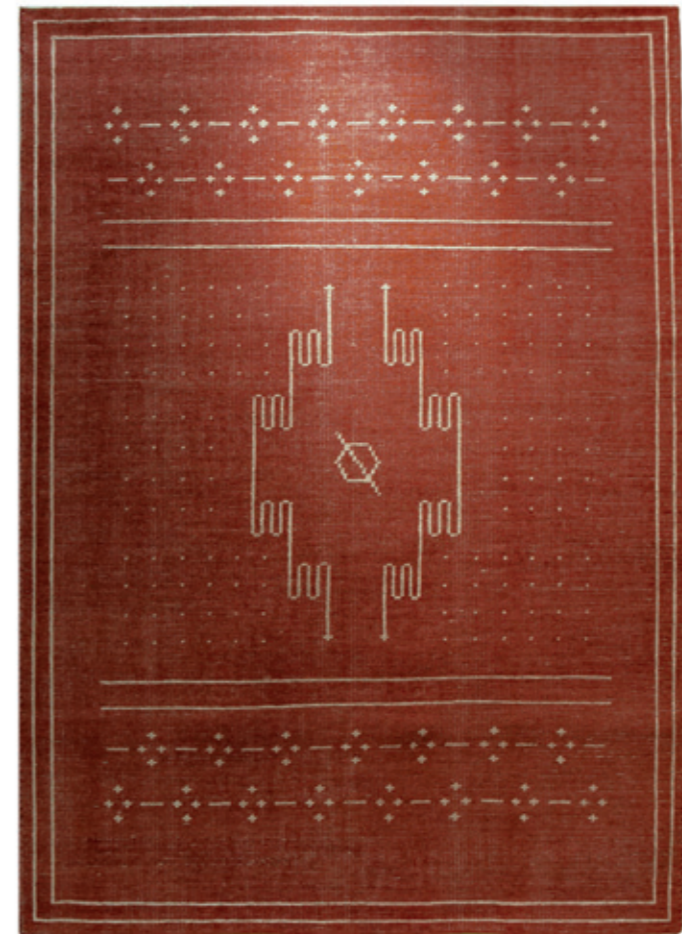
HAND KNOTTED



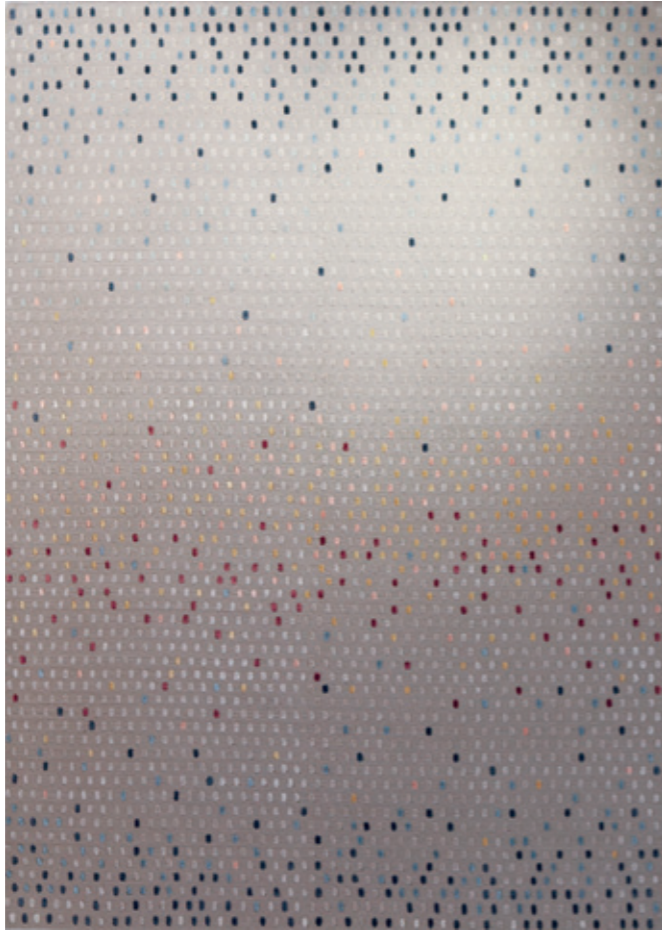
Fiumi bambooo by Jose Albors

HAND SPUN





Connection by Jose Albors

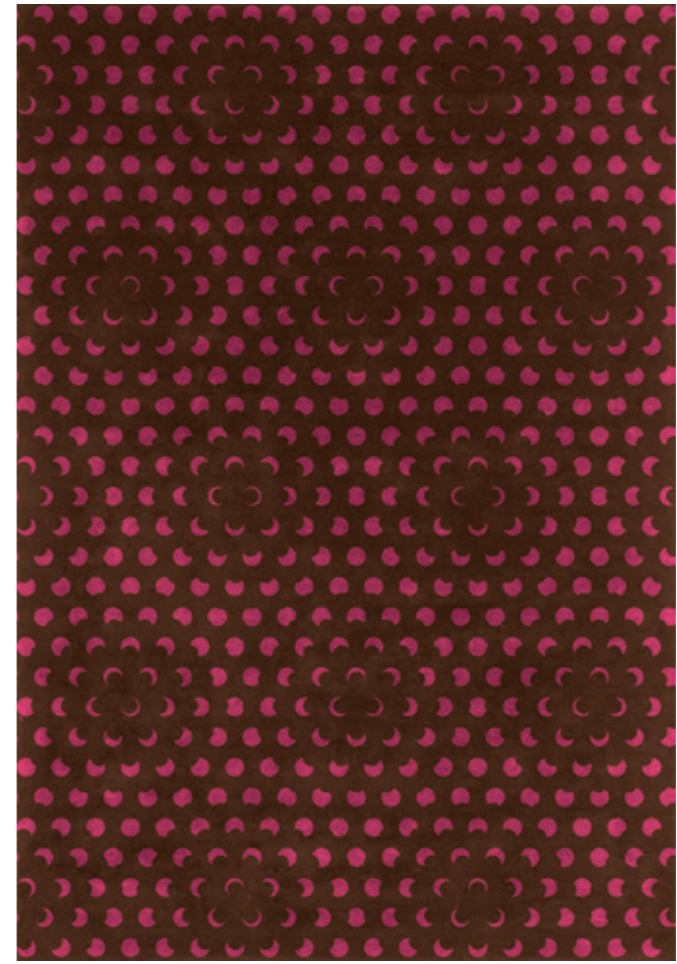


Iceberg by Jose Albers

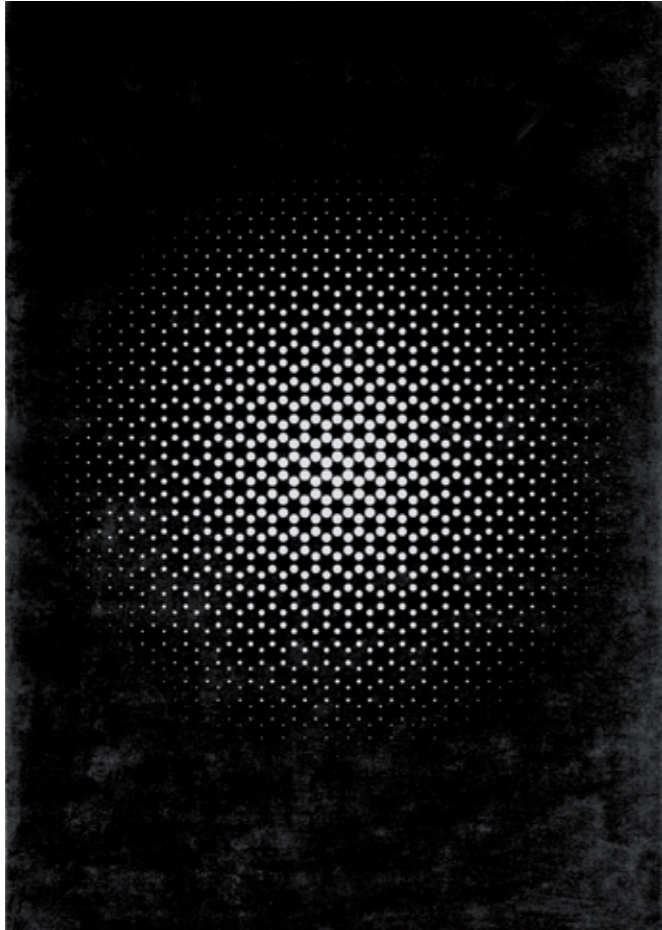


Iceberg's inspiration





Botan by Yumi Endo



Akari by Yumi Endo

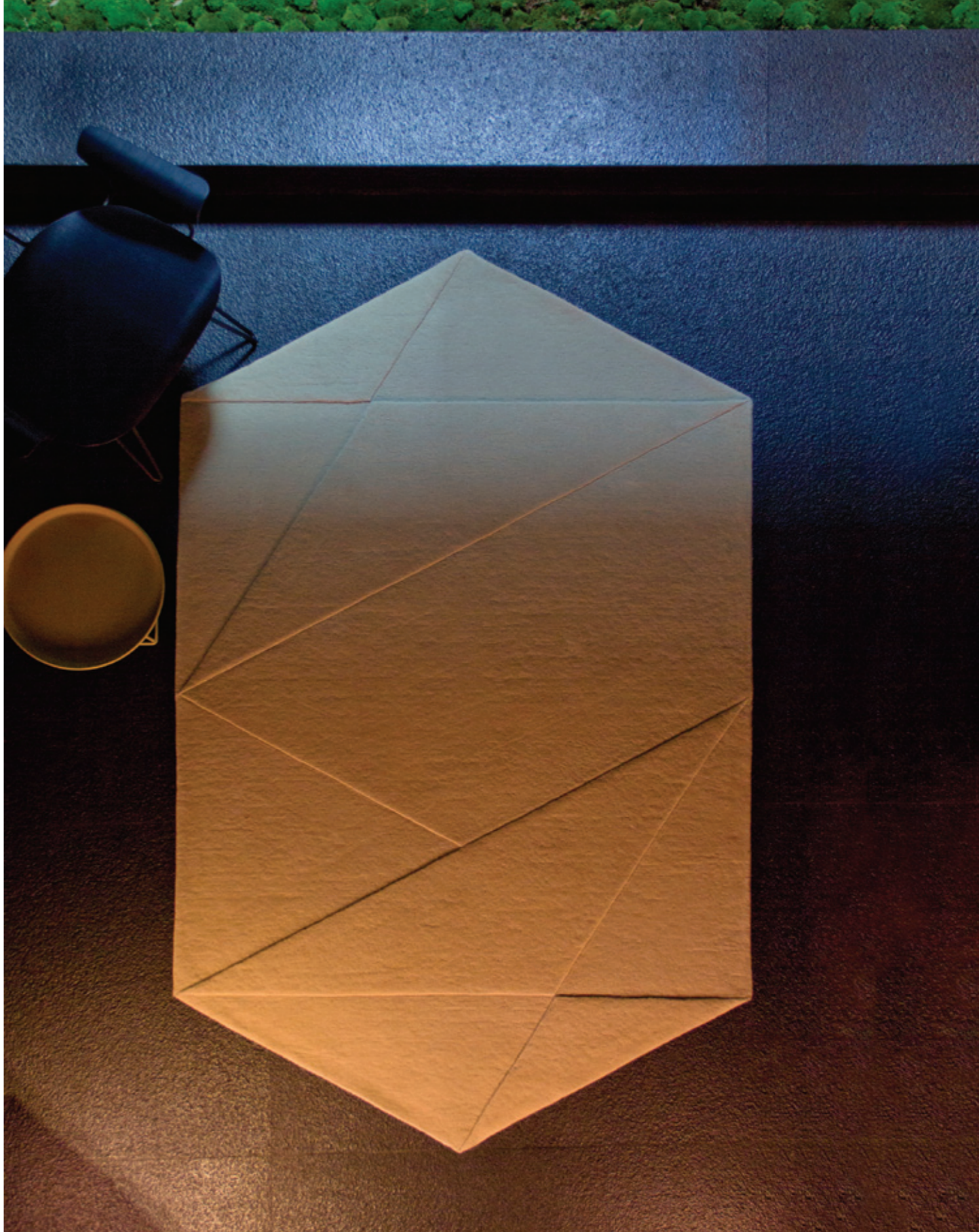


HAND KNOTTED

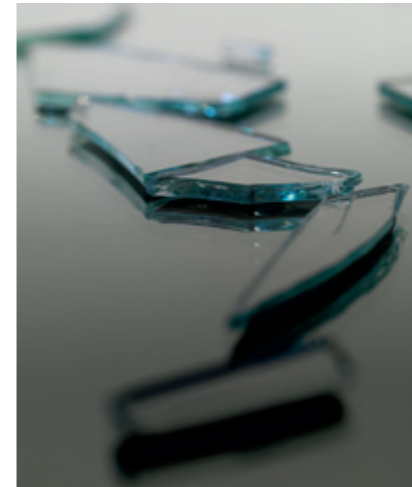
Miles by Moneo Brock



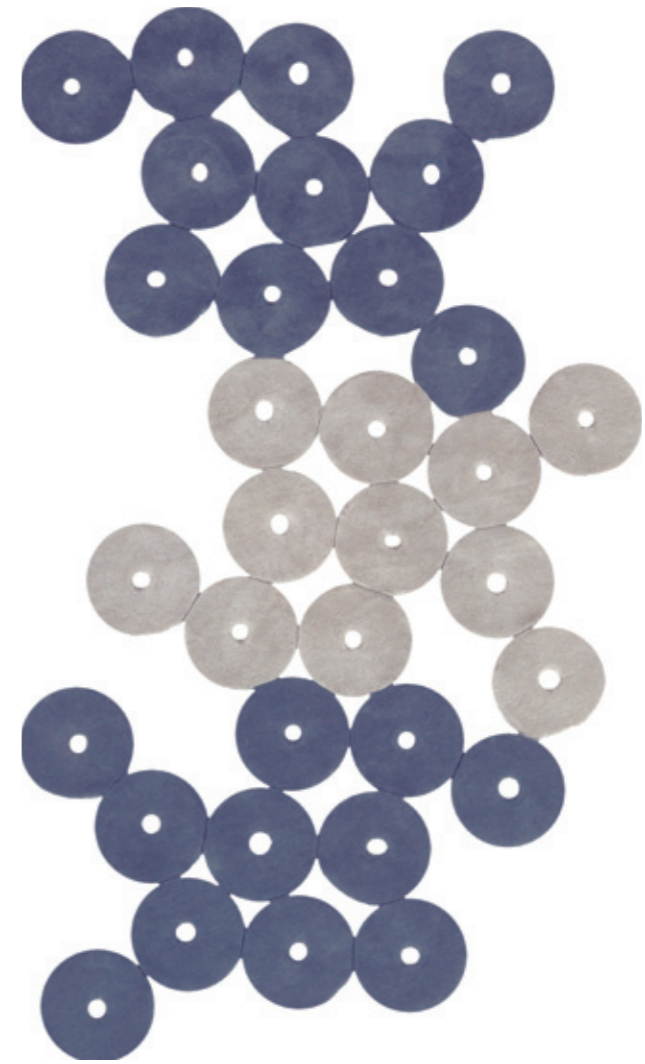
Mire by Jose Albors



Mire's inspiration

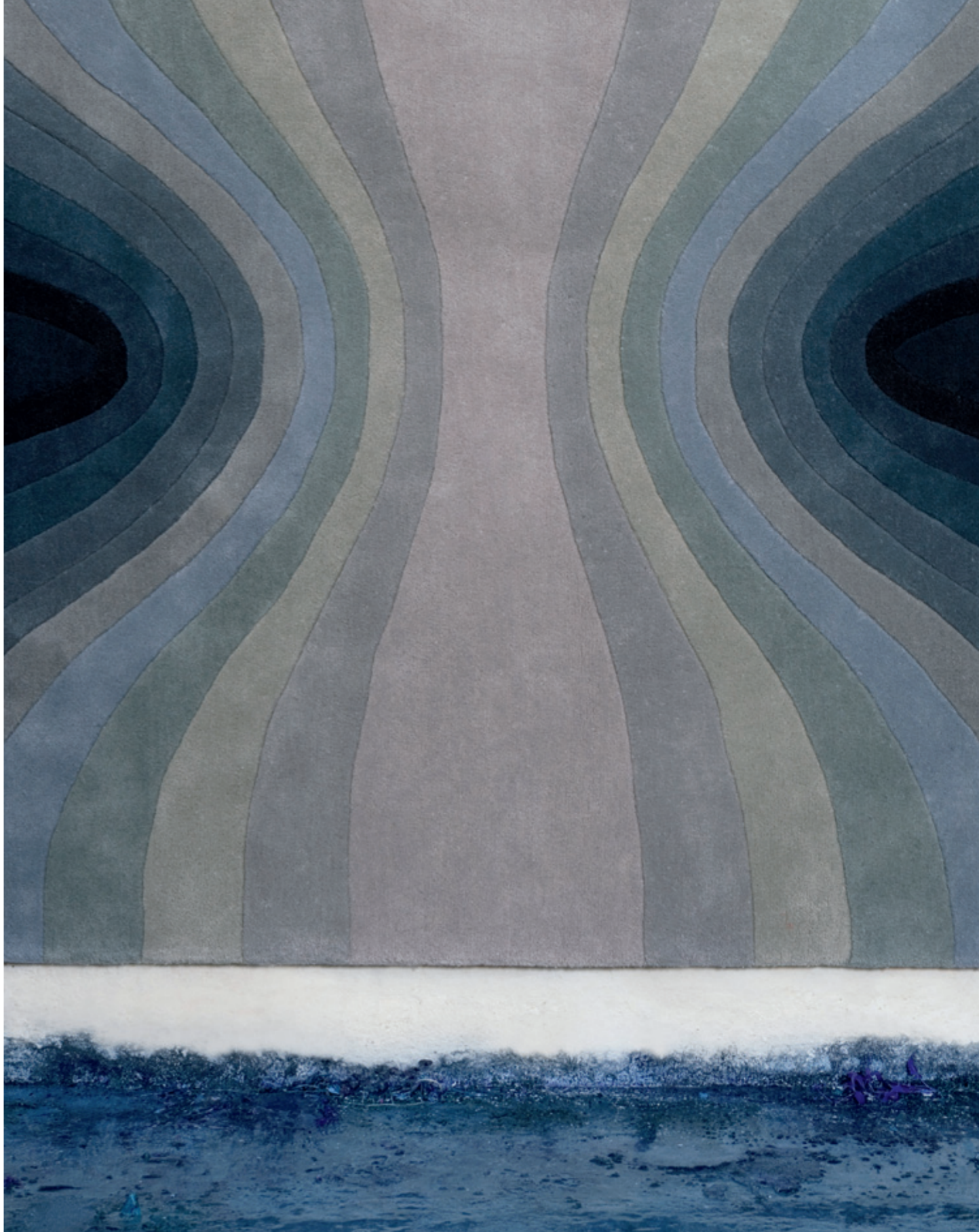
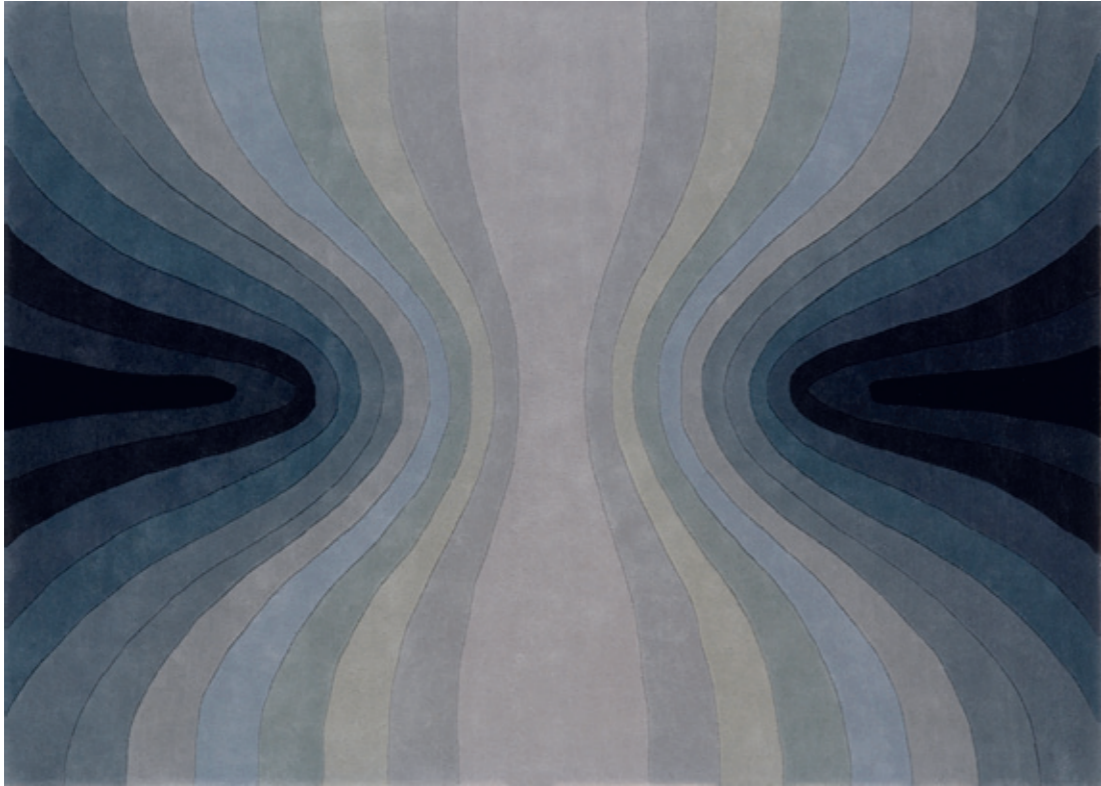


MON



Funghi by Francesc Rifé

HAND TUFTED



Squeeze by Claudio Colucci

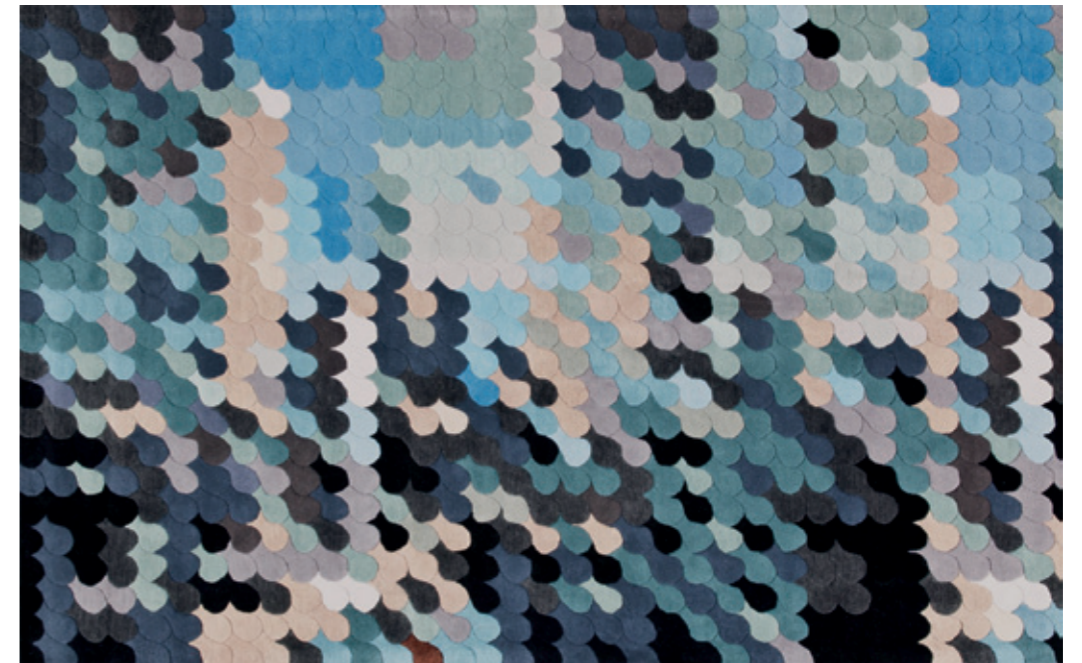


Alphabet by Moneo Brock



Leaf by Francesc Rifé





HAND TUFTED

Skyscraper by Claudio Colucci

HAND TUFTED



Sea Sea by Christian Ghion





Filaments by Michael Banks



WOVEN / KILIM

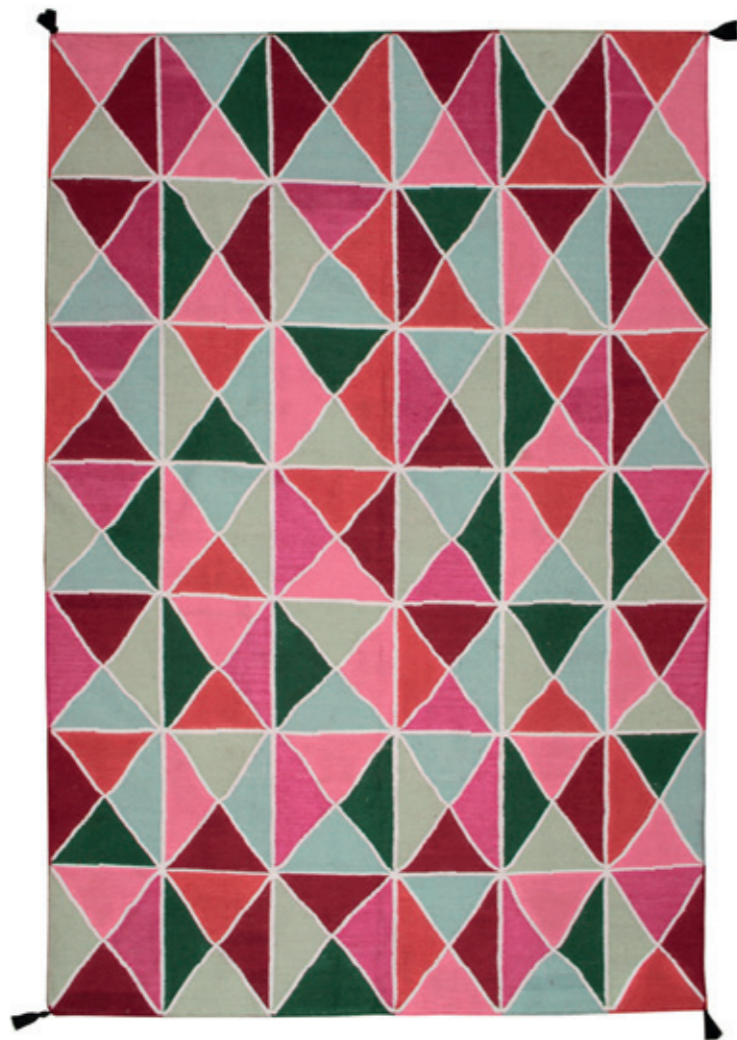


Mosaico by Inma Bermúdez



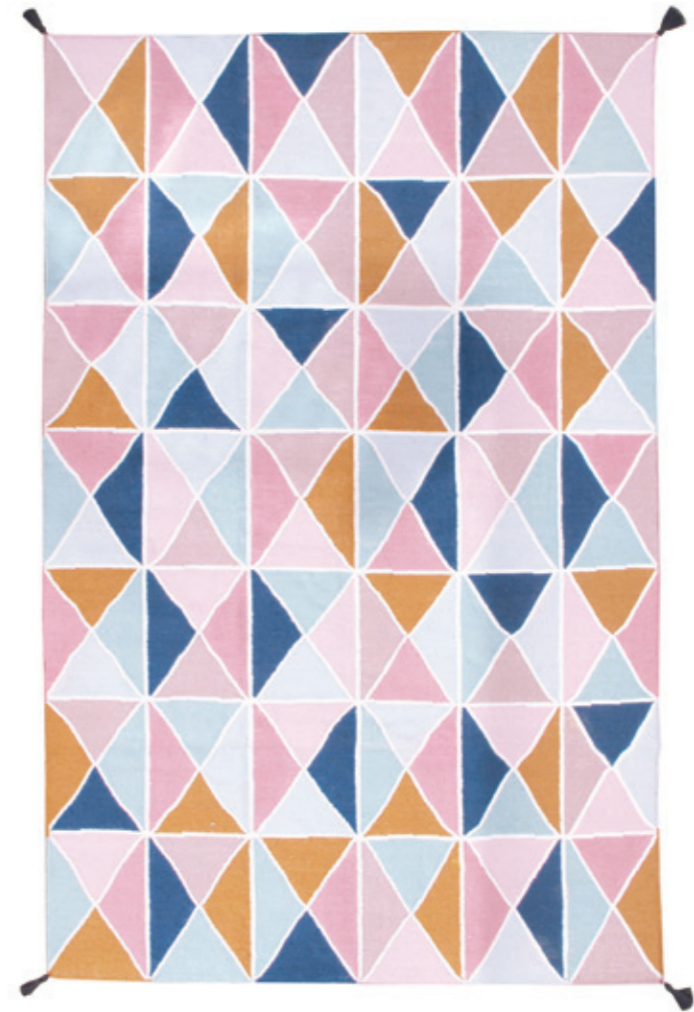


Mosaico kilim by Inmma Bermúdez

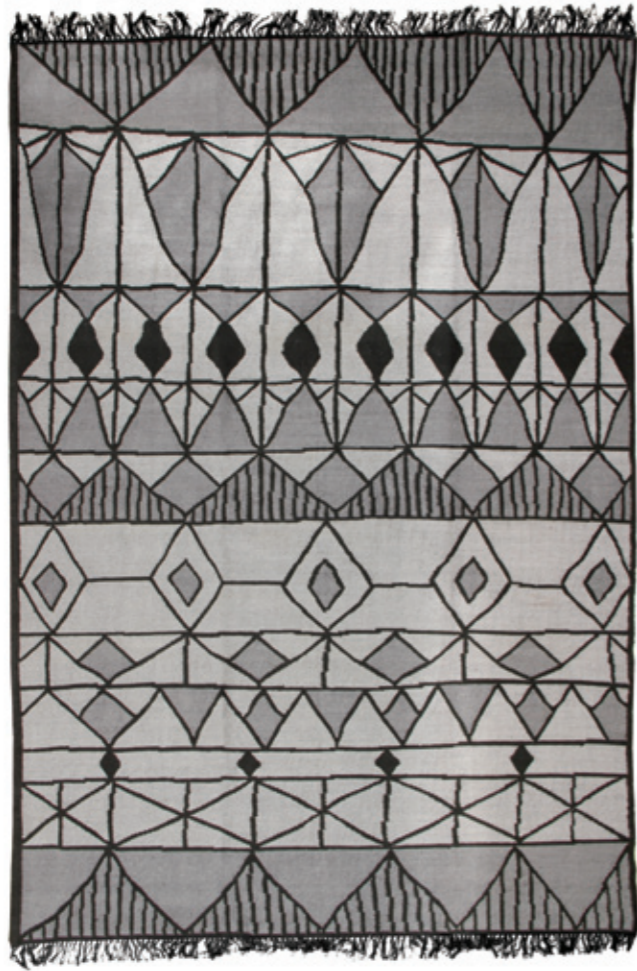


Triángulos by Inma Bermúdez





Triángulos II by Inma Bermúdez



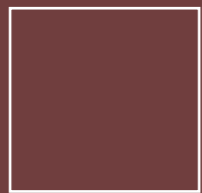
Étnica Killim by Inma Bermúdez





Kila&Koti by Francesc Rifé

LOOM KNOTTED





Basic Bamboo Silk

It is a line of 100% natural fiber carpets designed both for home and contract. Its neutral designs makes them suitable for any space that requires the right touch of color and warmth.

Es una línea de alfombras de fibra 100% natural pensada tanto para hogar como para contract. Sus diseños neutros se adaptan a cualquier espacio al que se quiera dar el toque justo de color y calidez.

C'est une gamme de tapis en fibre 100% naturelle créée tant pour le foyer que pour contract. Ses dessins neutres s'adaptent à tous les espaces qui requièrent juste une touche de chaleur et de couleur.

Colors showed here are approximations and could not match exactly with the final product.

Los colores que se muestran son aproximados y pueden no corresponder exactamente al producto final.

Ces couleurs sont présentées à titre d'exemple : il se peut que le produit final ne corresponde pas exactement.

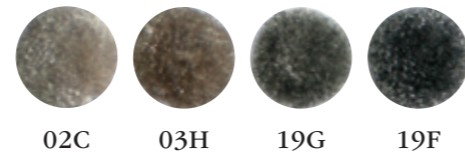
Standard sizes:

170X240 cm
200x300 cm
6'x9'
8'x10'

Extra
Extra
Supplémentaires



Basic
Básicos
Base



- High Resistance
- Durability
- Anti-Allergic
- Ecological
- Anti-Bacterial Un Bio-Agent
- Scotchgard™

- Alta Resistencia
- Durabilidad
- Antialérgica
- Ecológica
- Agente Anti-Bacteriano
- Scotchgard™

- Haute Résistance
- Durabilité
- Antiallergique
- Écologique
- Agent Un Antibactérien
- Scotchgard™



Basic Bamboo Silk



Projects
Proyectos
Projets



Hotel Mercer *2013*

BARCELONA | SPAIN





PROJECTS

Hotel Mercer *2013*



PROJECTS



Hotel W Barcelona *2014*

BARCELONA | SPAIN





Caro Hotel *2014*

VALENCIA | SPAIN





Caro Hotel 2014



Hotel Palm Camayenne 2013

GUINEA CONAKRY





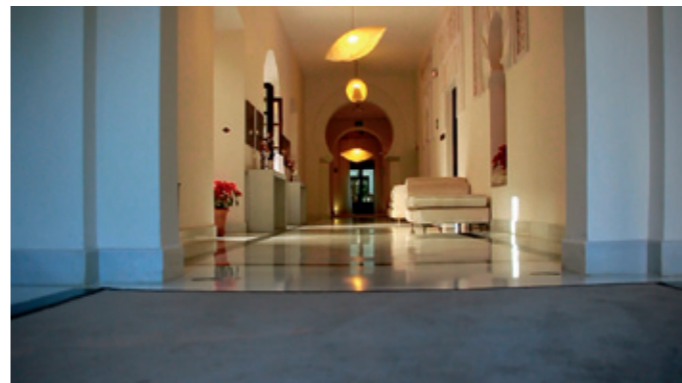
Pol&Grace Hotel *2015*

BARCELONA | SPAIN



Hotel Palacio Bailio *2014*

CÓRDOBA | SPAIN





PROJECTS

PROJECTS

Zabalaga Private Residence *2014*

SAN SEBASTIAN | SPAIN



Zabalaga Private Residence 2014

Casa Decor 2014

MADRID | SPAIN



PROJECTS

PROJECTS





Spain's Trade Office ICEX *2012*

DÜSSELDORF | GERMANY



Spain's Trade Office ICEX *2012*





Stua Stand Milan *2014*

MILAN | ITALY

Stua Stand Milan *2015*

MILAN ITALY

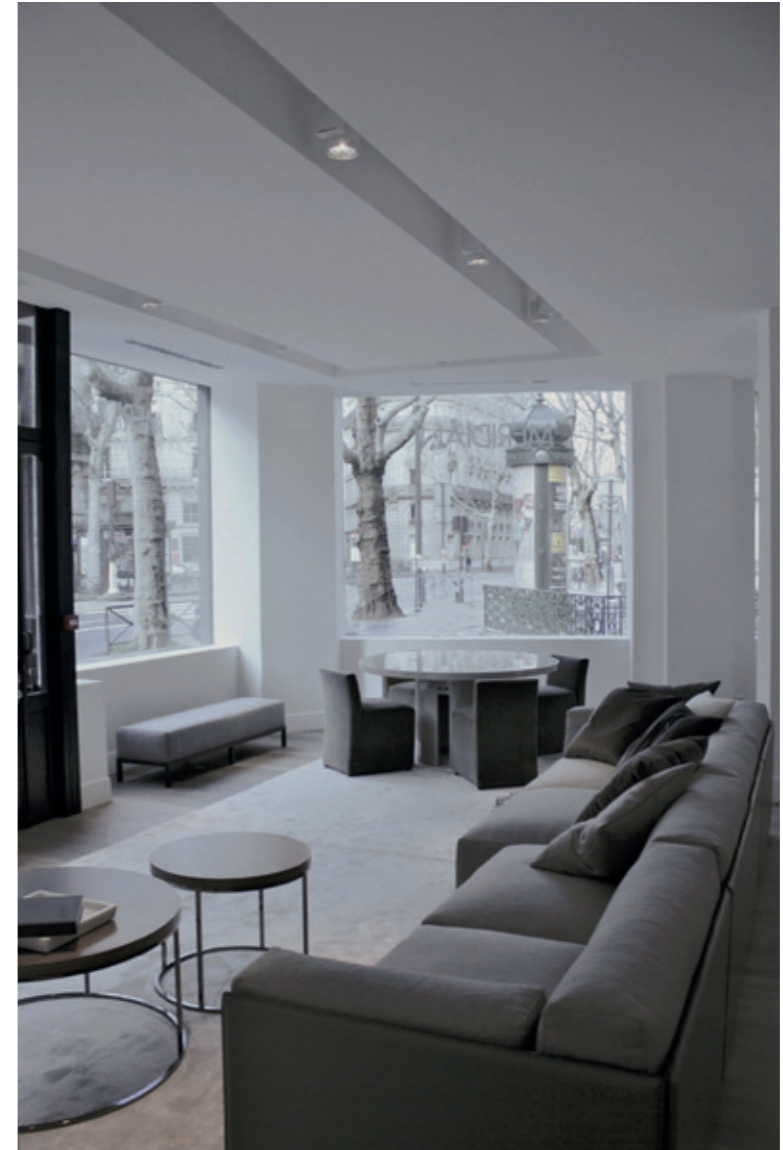
STUA





Meridiani Store *2014*

PARIS | FRANCE



Spanish's Great Match *2014*

MIAMI | USA



PROJECTS

Sight&Unseen *2014*

NEW YORK | USA



PROJECTS



Tokyo Designer's Week *2011*

TOKYO | JAPAN



Technical
Técnico
Technique

Arik Levy	164 - 165
Francesc Rifé	166 - 173
Christian Ghion	174 - 176
Inma Bermúdez	176
Stephanie Goto	177
Jose Albors	177 - 180
Yumi Endo	180
Moneo Brock	181
Claudio Colucci	181 - 183
Michael Banks	183 - 185
Vicente Vidal	185 - 187
#Touch Experience	188 - 189
#Basic Bamboo silk	188 - 189



Huelva

ARIK LEVY



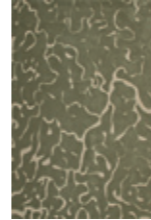
HUE-1

HAND TUFTED 100 LINES

25% LANA + 75% BAMBÚ | 25% WOOL + 75% BAMBOO | 25% LAINE NZ. + 75% BAMBOU
 SISTEMA | SYSTEM | SYSTÈME: HAND-TUFTED 100L.
 ALTURA | HEIGHT | HAUTEUR: 10 mm | 0,39in
 PESO | WEIGHT | POIDS: 4.000 gr/m² | 13oz/ft²
 COLORES | COLOURS | COULEURS: 869-02G

170x240 5'6"x7'9"
 200x250 6'6"x10'
 200x300 8'x10'

Andalucia



AND-1

HAND TUFTED 100 LINES

75% LANA + 25% BAMBÚ | 75% WOOL + 25% BAMBOO | 75% LAINE NZ. + 25% BAMBOU
 SISTEMA | SYSTEM | SYSTÈME: HAND-TUFTED 100L.
 ALTURA | HEIGHT | HAUTEUR: 10 mm | 0,39in
 PESO | WEIGHT | POIDS: 4.000 gr/m² | 13oz/ft²
 COLORES | COLOURS | COULEURS: 982-03G

170x240 5'6"x7'9"
 200x250 6'6"x10'
 200x300 8'x10'

Brazil



BRA-1

HAND TUFTED 100 LINES

70% LANA + 30% BAMBÚ | 70% WOOL + 30% BAMBOO | 70% LAINE NZ. + 30% BAMBOU
 SISTEMA | SYSTEM | SYSTÈME: HAND-TUFTED 100L.
 ALTURA | HEIGHT | HAUTEUR: 10 mm | 0,39in
 PESO | WEIGHT | POIDS: 4.000 gr/m² | 13oz/ft²
 COLORES | COLOURS | COULEURS: 890-18A

170x240 5'6"x7'9"
 200x250 6'6"x10'
 200x300 8'x10'

Monegros



MON-1

HAND TUFTED 100 LINES

70% LANA + 30% BAMBÚ | 70% WOOL + 30% BAMBOO | 70% LAINE NZ. + 30% BAMBOU
 SISTEMA | SYSTEM | SYSTÈME: HAND-TUFTED 100L.
 ALTURA | HEIGHT | HAUTEUR: 10 mm | 0,39in
 PESO | WEIGHT | POIDS: 4.000 gr/m² | 13oz/ft²
 COLORES | COLOURS | COULEURS: 808-06A

170x240 5'6"x7'9"
 200x250 6'6"x10'
 200x300 8'x10'

Kaila

FRANCESC RIFÉ



KL-01

HAND KNOTTED

50% LANA + 50% BAMBÚ | 50% WOOL + 50% BAMBOO | 50% LAINE NZ. + 50% BAMBOU
 SISTEMA | SYSTEM | SYSTÈME: HAND KNOTTED 100L.
 ALTURA | HEIGHT | HAUTEUR: 10mm | 0,39in
 PESO | WEIGHT | POIDS: 4.000 gr/m² | 13oz/ft²
 COLORES | COLOURS | COULEURS: 825-910

170x240 5'6"x7'9"
 200x300 6'6"x10'
 8'x10'
 9'x12'

Mao



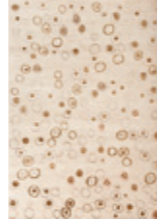
MO-01

HAND KNOTTED

60% LANA + 40% SEDA NATURAL | 60% WOOL + 40% SILK | 60% LAINE NZ. + 40% SOIE NATURELLE
 SISTEMA | SYSTEM | SYSTÈME: HAND KNOTTED 100L.
 ALTURA | HEIGHT | HAUTEUR: 10mm | 0,39in
 PESO | WEIGHT | POIDS: 4.000 gr/m² | 13oz/ft²
 COLORES | COLOURS | COULEURS: 812-981

170x240 5'6"x7'9"
 200x300 6'6"x10'
 8'x10'
 9'x12'

Rain



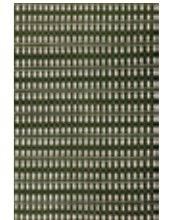
RN-02

HAND KNOTTED

65% LANA + 35% VISCOZA | 65% WOOL + 35% VISCOSE | 65% LAINE NZ. + 35% VISCOSE
 SISTEMA | SYSTEM | SYSTÈME: HAND KNOTTED 100L.
 ALTURA | HEIGHT | HAUTEUR: 10mm | 0,39in
 PESO | WEIGHT | POIDS: 4.000 gr/m² | 13oz/ft²
 COLORES | COLOURS | COULEURS: 981-801-869-849

170x240 5'6"x7'9"
 200x300 6'6"x10'
 8'x10'
 9'x12'

Mou



MU-01

HAND KNOTTED

50% LANA + 50% BAMBÚ | 50% WOOL + 50% BAMBOO | 50% LAINE NZ. + 50% BAMBOU
 SISTEMA | SYSTEM | SYSTÈME: HAND KNOTTED 100L.
 ALTURA | HEIGHT | HAUTEUR: 10mm | 0,39in
 PESO | WEIGHT | POIDS: 4.000 gr/m² | 13oz/ft²
 COLORES | COLOURS | COULEURS: 894-981

170x240 5'6"x7'9"
 200x300 6'6"x10'
 8'x10'
 9'x12'

Straw



ST-01

HAND KNOTTED

70% LANA + 30% VISCOZA | 70% WOOL + 30% VISCOSE | 70% LAINE NZ. + 30% VISCOSE
 SISTEMA | SYSTEM | SYSTÈME: HAND KNOTTED 100L.
 ALTURA | HEIGHT | HAUTEUR: 10mm | 0,39in
 PESO | WEIGHT | POIDS: 4.000 gr/m² | 13oz/ft²
 COLORES | COLOURS | COULEURS: 824-981

170x240 5'6"x7'9"
 200x300 6'6"x10'
 8'x10'
 9'x12'

Mym



MY-01

HAND KNOTTED

75% LANA + 25% YUTE | 75% WOOL + 25% JUTE | 75% LAINE NZ. + 25% JUTE
 SISTEMA | SYSTEM | SYSTÈME: HAND KNOTTED 80L.
 ALTURA | HEIGHT | HAUTEUR: 10mm | 0,39in
 PESO | WEIGHT | POIDS: 4.000 gr/m² | 13oz/ft²
 COLORES | COLOURS | COULEURS: 842-869

170x240 5'6"x7'9"
 200x300 6'6"x10'
 8'x10'
 9'x12'

Maki

FRANCESC RIFÉ



MK-01

HAND KNOTTED

70% LANA + 30% BAMBÚ | 70% WOOL + 30% BAMBOO | 70% LAINE NZ. + 30% BAMBOU
 SISTEMA | SYSTEM | SYSTÈME: HAND KNOTTED 80L.
 ALTURA | HEIGHT | HAUTEUR: 12mm | 0,47in
 PESO | WEIGHT | POIDS: 4.500gr/m² | 15oz/ft²
 COLORES | COLOURS | COULEURS: 869-981

170x240 5'6"x7'9"
 200x300 6'6"x10'
 8'x10'
 9'x12'

Cuk



CK-01

HAND KNOTTED

100% LANA | 100% WOOL | 100% LAINE NZ.
 SISTEMA | SYSTEM | SYSTÈME: HAND KNOTTED 100L.
 ALTURA | HEIGHT | HAUTEUR: 12mm | 0,47in
 PESO | WEIGHT | POIDS: 4.500gr/m² | 15oz/ft²
 COLORES | COLOURS | COULEURS: 822-961

170x240 5'6"x7'9"
 200x300 6'6"x10'
 8'x10'
 9'x12'

Raj



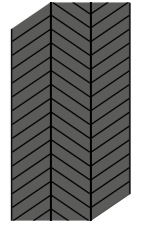
RJ-01

HAND KNOTTED

50% LANA + 50% BAMBÚ | 50% WOOL + 50% BAMBOO | 50% LAINE NZ. + 50% BAMBOU
 SISTEMA | SYSTEM | SYSTÈME: HAND KNOTTED 100L.
 ALTURA | HEIGHT | HAUTEUR: 10mm | 0,39in
 PESO | WEIGHT | POIDS: 4.000 gr/m² | 13oz/ft²
 COLORES | COLOURS | COULEURS: 823-931

170x240 5'6"x7'9"
 200x300 6'6"x10'
 8'x10'
 9'x12'

Kila



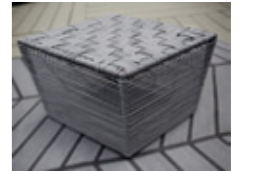
KIL-01

WOVEN

TWITCHELL USA YARNS
 SISTEMA | SYSTEM | SYSTÈME: WOVEN
 ALTURA | HEIGHT | HAUTEUR: 5mm | 0,20in
 PESO | WEIGHT | POIDS: 2.500gr/m² | 0,9oz/ft²
 COLORES | COLOURS | COULEURS: BLACK-FLINT GREY

215X295 7'X 9'6"
 276X295 9'X 9'6"

Kila



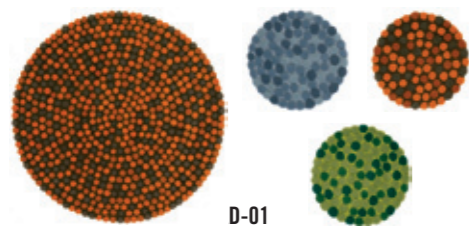
KOT-01

WOVEN

TWITCHELL USA YARNS
 SISTEMA | SYSTEM | SYSTÈME: WOVEN
 MEDIDAS | HEIGHT | HAUTEUR: 395mm | 15,5in
 PESO | WEIGHT | POIDS: 2.000 & 2.500gr | 4,4 & 5,5oz
 COLORES | COLOURS | COULEURS: FLINT GREY

300x360 11,8"x14"
 300x720 11,8"x28,3"

Adok



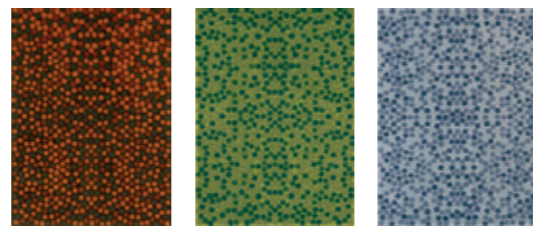
D-01

HAND-TUFTED

100% LANA | 100% WOOL | 100% LAINE NZ.
SISTEMA | SYSTEM | SYSTÈME: HAND-TUFTED
ALTURA | HEIGHT | HAUTEUR: 20mm | 0,78in
PESO | WEIGHT | POIDS: 4.750gr/m² | 16oz/ft²

COLORES | COLOURS | COULEURS: AD-01 200 868-820-815-824 AD-01 100 909-889 932-910 851-931 854-891 868-820 815-824
AD-01 868-820-815-824 AD-02 851-931-854-891 AD-03 909-889-932-910

FRANCESCA RIFÉ



AD-01

AD-02

AD-03

200 Ø 6'6" Ø 150x200 5'6"x7'9"
100 Ø 3'3" Ø 170x240 6'6"x10'
200x300 8'x10'

Earth



EA-01

EA-02

EA-03

EA-04

EA-05

EA-06

HAND-TUFTED

100% LANA | 100% WOOL | 100% LAINE NZ.
SISTEMA | SYSTEM | SYSTÈME: HAND-TUFTED
ALTURA | HEIGHT | HAUTEUR: 17mm | 0,66in
PESO | WEIGHT | POIDS: 4.250gr/m² | 14oz/ft²

COLORES | COLOURS | COULEURS: EA-01 894 EA-02 965 EA-03 842 EA-04 894 EA-05 965 EA-06 842

140x170 4'6"x5'6" 60x170 2'x5'6"

Braille

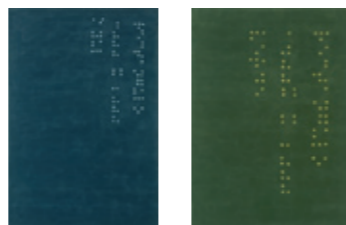


BR-01

HAND-TUFTED

100% LANA | 100% WOOL | 100% LAINE NZ.
SISTEMA | SYSTEM | SYSTÈME: HAND-TUFTED
ALTURA | HEIGHT | HAUTEUR: 17mm | 0,66in
PESO | WEIGHT | POIDS: 4.250gr/m² | 14oz/ft²

COLORES | COLOURS | COULEURS: BR-01 917-820 BR-02 853-993 BR-03 894-911



BR-02

BR-03

200 Ø 6'6" Ø 150x200 5'x6'6"
150 Ø 5' Ø 170x240 5'6"x7'9"
200x300 6'6"x10'
8'x10'

Ego



EG-01

EG-02

EG-03

EG-04

EG-05

EG-06

HAND-TUFTED

100% LANA | 100% WOOL | 100% LAINE NZ.
SISTEMA | SYSTEM | SYSTÈME: HAND-TUFTED
ALTURA | HEIGHT | HAUTEUR: 17mm | 0,66in
PESO | WEIGHT | POIDS: 4.250gr/m² | 14oz/ft²

COLORES | COLOURS | COULEURS: EG-01 842-981 EG-02 981-842 EG-03 842 EG-04 842 EG-05 868 EG-06 869

240x280 7'9"x9,2" PIEZA | PIECE | PIÈCE 150 Ø 5' Ø

Cloud



CL-01

CL-02

CL-03

CL-04

HAND-TUFTED

100% LANA | 100% WOOL | 100% LAINE NZ.
SISTEMA | SYSTEM | SYSTÈME: HAND-TUFTED
ALTURA | HEIGHT | HAUTEUR: 17mm | 0,66in
PESO | WEIGHT | POIDS: 4.250gr/m² | 14oz/ft²

COLORES | COLOURS | COULEURS: CL-01 993-893 CL-02 860-868 CL-03 970-850 CL-04 931 -894

70x140 2'3"x4'6"
150x200 5'x6'6"
170x240 5'6"x7'9"
200x300 6'6"x10'
8'x10'

Funghi



FG-01

FG-02

FG-03

FG-04

FG-05

FG-06

HAND-TUFTED

100% LANA | 100% WOOL | 100% LAINE NZ.
SISTEMA | SYSTEM | SYSTÈME: HAND-TUFTED
ALTURA | HEIGHT | HAUTEUR: 18mm | 0,70in
PESO | WEIGHT | POIDS: 4.250gr/m² | 14oz/ft²

COLORES | COLOURS | COULEURS: FG-01 801 FG-02 932-989 FG-03 883-823 FG-04 837 FG-05 826 FG-06 957

170x240 5'6"x7'9" 70x140 2'3"x4'6"
200x300 6'6"x10'
8'x10'

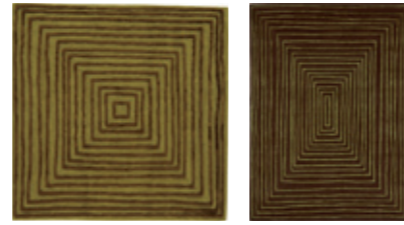
Laps



LP-01

LP-02

FRANCESC RIFÉ



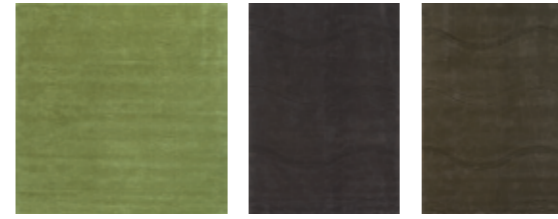
LP-03

LP-04

HAND-TUFTED

100% LANA + VISCOSA | 100% WOOL + VISCOSE | 100% LAINE NZ. + VISCOSE
 SISTEMA | SYSTEM | SYSTÈME: HAND-TUFTED
 ALTURA | HEIGHT | HAUTEUR: 17mm | 0,66in
 PESO | WEIGHT | POIDS: 4.250gr/m² | 14oz/ft²
 COLORES | COLOURS | COULEURS: LP-01 812-910 LP-02 824-942 LP-03 824-849 LP-04 824-849

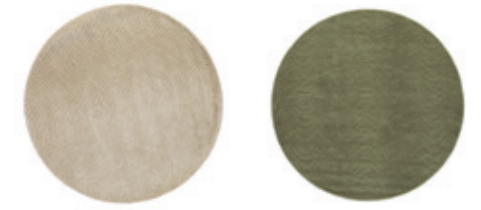
Ona



ON-01

ON-02

ON-03



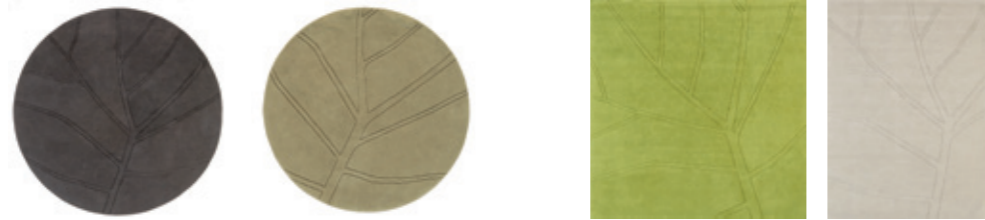
ON-04

ON-05

HAND-TUFTED

100% LANA | 100% WOOL | 100% LAINE NZ.
 SISTEMA | SYSTEM | SYSTÈME: HAND-TUFTED
 ALTURA | HEIGHT | HAUTEUR: 17mm | 0,66in
 PESO | WEIGHT | POIDS: 4.250gr/m² | 14oz/ft²
 COLORES | COLOURS | COULEURS: ON-01 931 ON-02 822 ON-03 842 ON-04 981 ON-05 869

Leaf



LF-01

LF-02

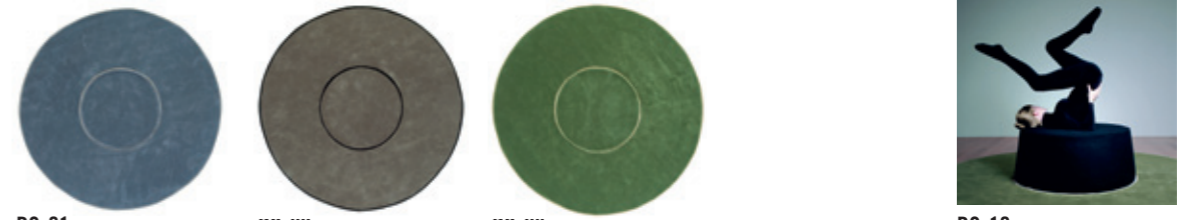
LF-03

LF-04

HAND-TUFTED

100% LANA | 100% WOOL | 100% LAINE NZ.
 SISTEMA | SYSTEM | SYSTÈME: HAND-TUFTED
 ALTURA | HEIGHT | HAUTEUR: 17mm | 0,66in
 PESO | WEIGHT | POIDS: 4.250gr/m² | 14oz/ft²
 COLORES | COLOURS | COULEURS: LF-01 822 LF-02 869 LF-03 911 LF-04 981

Ring



RG-01

RG-U2

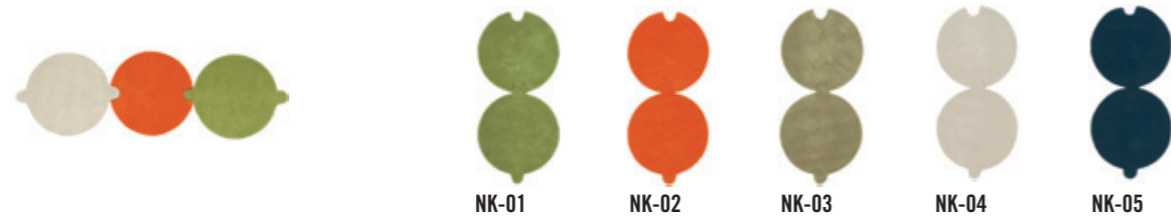
RG-U3

RG-10

HAND-TUFTED

100% LANA | 100% WOOL | 100% LAINE NZ.
 SISTEMA | SYSTEM | SYSTÈME: HAND-TUFTED
 ALTURA | HEIGHT | HAUTEUR: 17mm | 0,66in
 PESO | WEIGHT | POIDS: 4.250gr/m² | 14oz/ft²
 COLORES | COLOURS | COULEURS: RG-01 910-989 RG-02 842-812 RG-03 894-861

Necklace



NK-01

NK-02

NK-03

NK-04

NK-05

HAND-TUFTED

100% LANA | 100% WOOL | 100% LAINE NZ.
 SISTEMA | SYSTEM | SYSTÈME: HAND-TUFTED
 ALTURA | HEIGHT | HAUTEUR: 17mm | 0,66in
 PESO | WEIGHT | POIDS: 4.250gr/m² | 14oz/ft²
 COLORES | COLOURS | COULEURS: 981-820-931 NK-01 931 NK-02 820 NK-03 869 NK-04 981 NK-05 852

Sweets



SW-01

SW-02

SW-03

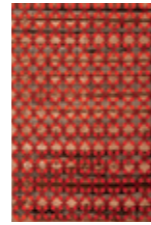
SW-04

HAND-TUFTED

100% LANA | 100% WOOL | 100% LAINE NZ.
 SISTEMA | SYSTEM | SYSTÈME: HAND-TUFTED
 ALTURA | HEIGHT | HAUTEUR: 18mm | 0,70in
 PESO | WEIGHT | POIDS: 4.250gr/m² | 14oz/ft²
 COLORES | COLOURS | COULEURS: SW-01 822-922-981 SW-02 853-981 SW-03 883-823 SW-04 932-989-981 SW-05 932-981

Star

CHRISTIAN GHION



SR-01

HAND-KNOTTED

65% LANA + 35% VISCOSA | 65% WOOL + 35% VISCOSE | 65% LAINE NZ. + 35% VISCOSE
 SISTEMA | SYSTEM | SYSTÈME: HAND-KNOTTED 100L.
 ALTURA | HEIGHT | HAUTEUR: 10mm | 0,39in
 PESO | WEIGHT | POIDS: 4.000 gr/m² | 13oz/ft²
 COLORES | COLOURS | COULEURS: 868-820-964-865

170x240 5'6"x7'9"
 200x300 6'6"x10'
 8'x10'

Happy Hours



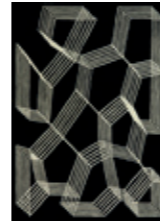
HS-01

HAND-TUFTED

100% LANA | 100% WOOL | 100% LAINE NZ.
 SISTEMA | SYSTEM | SYSTÈME: HAND-TUFTED
 ALTURA | HEIGHT | HAUTEUR: 17mm | 0,66in
 PESO | WEIGHT | POIDS: 4.250gr/m² | 14oz/ft²
 COLORES | COLOURS | COULEURS: 910-961-812

170x170 6'6"x6'6"

Fields



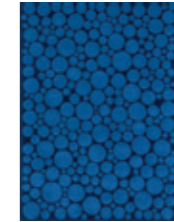
FL-01

HAND-TUFTED

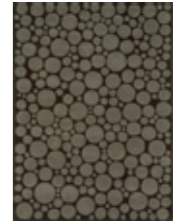
100% LANA | 100% WOOL | 100% LAINE NZ.
 SISTEMA | SYSTEM | SYSTÈME: HAND-TUFTED
 ALTURA | HEIGHT | HAUTEUR: 17mm | 0,66in
 PESO | WEIGHT | POIDS: 4.250gr/m² | 14oz/ft²
 COLORES | COLOURS | COULEURS: 961-812

150x200 5'6"x7'9"
 170x240 6'6"x10'
 170x170 8'x10'
 200x300

Happyness



HP-01



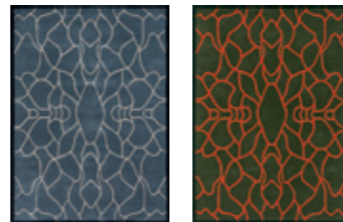
HP-02

HAND-TUFTED

100% LANA + VISCOSA | 100% WOOL + VISCOSE | 100% LAINE NZ. + VISCOSE
 SISTEMA | SYSTEM | SYSTÈME: HAND-TUFTED
 ALTURA | HEIGHT | HAUTEUR: 18mm | 0,70in
 PESO | WEIGHT | POIDS: 4.250gr/m² | 14oz/ft²
 COLORES | COLOURS | COULEURS: HP-01 913-813 HP-02 902-804

170x240 5'6"x7'9"
 200x300 6'6"x10'
 8'x10'

Garden Secret



GR-01

GR-02

HAND-TUFTED

100% LANA | 100% WOOL | 100% LAINE NZ.
 SISTEMA | SYSTEM | SYSTÈME: HAND-TUFTED
 ALTURA | HEIGHT | HAUTEUR: 17mm | 0,66in
 PESO | WEIGHT | POIDS: 4.250gr/m² | 14oz/ft²
 COLORES | COLOURS | COULEURS: GR-01 890-812 -981 GR-02 812-817-823

150x200 5'6"x7'9"
 170x240 6'6"x10'
 200x300 8'x10'

Sea Sea



SA-01



SA-02

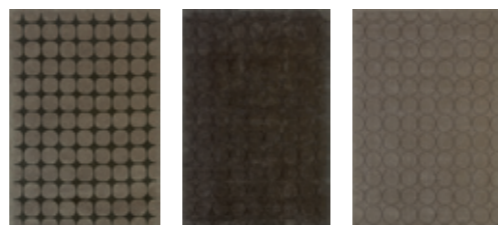
HAND-TUFTED

100% LANA + VISCOSA | 100% WOOL + VISCOSE | 100% LAINE NZ. + VISCOSE
 SISTEMA | SYSTEM | SYSTÈME: HAND-TUFTED
 ALTURA | HEIGHT | HAUTEUR: 17mm | 0,66in
 PESO | WEIGHT | POIDS: 4.250gr/m² | 14oz/ft²
 COLORES | COLOURS | COULEURS: SA-01 8955-949-995 SA-02 929-890-837

170x240 5'6"x7'9"
 200x300 6'6"x10'
 240x240 8'x8"
 8'x10"

Up Grade

CHRISTIAN GHION



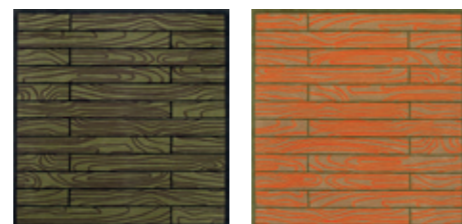
UP-01 UP-02 UP-03

HAND-TUFTED

100% LANA | 100% WOOL | 100% LAINE NZ.
 SISTEMA | SYSTEM | SYSTÈME: HAND-TUFTED
 ALTURA | HEIGHT | HAUTEUR: 17mm | 0,66in
 PESO | WEIGHT | POIDS: 4.250gr/m² | 14oz/ft²
 COLORES | COLOURS | COULEURS: UP-01 902-865 UP-02 865 UP-03 902

170x240 5'6"x7'9"
 200x300 6'6"x10'
 8'x10'

Woodstock



WD-01 WD-02

HAND-TUFTED

100% LANA | 100% WOOL | 100% LAINE NZ.
 SISTEMA | SYSTEM | SYSTÈME: HAND-TUFTED
 ALTURA | HEIGHT | HAUTEUR: 17mm | 0,66in
 PESO | WEIGHT | POIDS: 4.250gr/m² | 14oz/ft²
 COLORES | COLOURS | COULEURS: WD-01 812-845-802 WD-02 802-820-821

240x240 8'x8'

Al Fresco

INMA BERMÚDEZ



MOSAIC

MOSAIC COLOR

ÉTNICA

TRIÁNGULOS

TRIÁNGULOS CLARO

HANDMADE KILIM

POLIÉSTER RECICLADO | RECYCLED POLYESTER | POLYESTER RECYCLÉ
 SISTEMA | SYSTEM | SYSTÈME: HANDMADE KILIM
 ALTURA | HEIGHT | HAUTEUR: 6mm | 0,23in
 PESO | WEIGHT | POIDS: 1700 gr/m² | 6oz/ft²
 COLORES | COLOURS | COULEURS: MOSAIC NC-001-NC-009-NC-306 MOSAIC COLOR NC-001-NC-009-NC-211-NC-306-NC-397-NC-410-NC-470 ÉTNICA NC-539-NC-517 -600 TRIÁNGULOS NC-001-NC-017-NC-020-NC-057-NC-173-NC-302-NC-350-NC-402 TRIÁNGULOS CLARO NC-001-NC-039-NC-121-NC-211-NC-330-NC-410-NC-470-NC-511

170X240 6'X9'
 200x300 8'x10'
 250x300 9'x12'

Language

STEPHANIE GOTO



LG-01

HAND KNOTTED

LANA + SEDA | WOOL + SILK | LAINE NZ. + SOIE
 SISTEMA | SYSTEM | SYSTÈME: HAND KNOTTED 100L.
 ALTURA | HEIGHT | HAUTEUR: 10mm | 0,39in
 PESO | WEIGHT | POIDS: 4.000 gr/m² | 13oz/ft²
 COLORES | COLOURS | COULEURS: 812-961

190X250 6'2"x8'2"
 270X365 9'x12'

Iceberg

JOSE ALBORS



IC-01

HAND KNOTTED

70% LANA + 30% BAMBÚ | 70% WOOL + 30% BAMBOO | 70% LAINE NZ. + 30% BAMBOU
 SISTEMA | SYSTEM | SYSTÈME: HAND KNOTTED 100L.
 ALTURA | HEIGHT | HAUTEUR: 10mm | 0,39in
 PESO | WEIGHT | POIDS: 4.000 gr/m² | 13oz/ft²
 COLORES | COLOURS | COULEURS: 981-853-955-991-899-940-987

170X240 5'6"x6'
 200x300 6'6"x10'
 250x300 8'x10'
 9'x12'

Connection



CNN-01

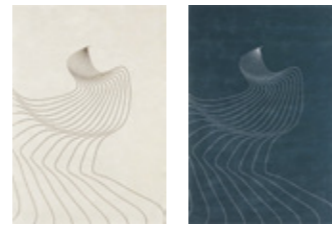
HAND KNOTTED

80% LANA + 20% BAMBÚ | 80% WOOL + 20% BAMBOO | 80% LAINE + 20% BAMBOU
 SISTEMA | SYSTEM | SYSTÈME: HAND KNOTTED 80L.
 ALTURA | HEIGHT | HAUTEUR: 10mm | 0,39in
 PESO | WEIGHT | POIDS: 3.750 gr/m² | 12oz/ft²
 COLORES | COLOURS | COULEURS: 871-01A

170X240 5'6"x6'
 200x300 6'6"x10'
 250x300 8'x10'
 9'x12'

Corso

JOSE ALBORS



CR-01

CR-02

HAND KNOTTED

100% LANA | 100% WOOL | 100% LAINE NZ.
 SISTEMA | SYSTEM | SYSTÈME: HAND KNOTTED 100L.
 ALTURA | HEIGHT | HAUTEUR: 10mm | 0,39in
 PESO | WEIGHT | POIDS: 4.000 gr/m² | 13oz/ft²
 COLORES | COLOURS | COULEURS: CR-01 981-845 CR-02 835-889

170x240 5'6"x7'9"
 200x250 6'6"x10'
 200x300 8'x10'

Fiumi Bamboo



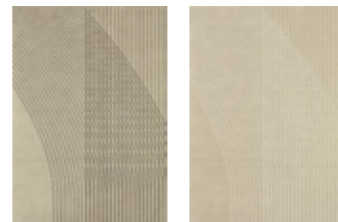
FU-14-1

HAND KNOTTED

100% LANA | 100% WOOL | 100% LAINE NZ.
 SISTEMA | SYSTEM | SYSTÈME: HAND KNOTTED 100L.
 ALTURA | HEIGHT | HAUTEUR: 12mm | 0,47in
 PESO | WEIGHT | POIDS: 4500gr/m² | 15oz/ft²
 COLORES | COLOURS | COULEURS: 13P-12i

170x240 5'6"x7'9"
 200x300 6'6"x10'
 8'x10'
 9'x12'

Sabbia



SB-01

SB-02

HAND KNOTTED

100% LANA | 100% WOOL | 100% LAINE NZ.
 SISTEMA | SYSTEM | SYSTÈME: HAND KNOTTED 100L.
 ALTURA | HEIGHT | HAUTEUR: 10mm | 0,39in
 PESO | WEIGHT | POIDS: 4.000 gr/m² | 13oz/ft²
 COLORES | COLOURS | COULEURS: SB-01 801-845 SB-02 801-961

170x240 5'6"x7'9"
 200x250 6'6"x10'
 200x300 8'x10'

Mire



MR-01

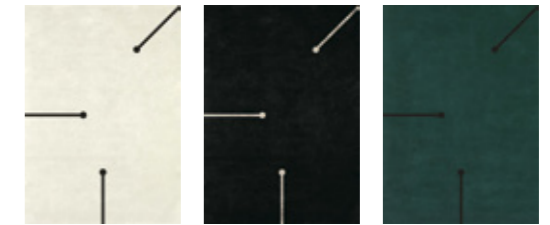
MR-02

HAND-TUFTED

100% LANA | 100% WOOL | 100% LAINE NZ.
 SISTEMA | SYSTEM | SYSTÈME: HAND-TUFTED 80L.
 ALTURA | HEIGHT | HAUTEUR: 20mm | 0,78in
 PESO | WEIGHT | POIDS: 4.750gr/m² | 16oz/ft²
 COLORES | COLOURS | COULEURS: MR-1 981 MR-2 865

150x240 5'x7'8"

Fiumi



FU-01

FU-02

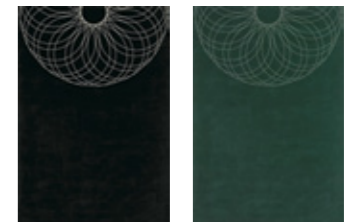
FU-03

HAND-TUFTED

100% LANA | 100% WOOL | 100% LAINE NZ.
 SISTEMA | SYSTEM | SYSTÈME: HAND-TUFTED
 ALTURA | HEIGHT | HAUTEUR: 17mm | 0,66in
 PESO | WEIGHT | POIDS: 4.250gr/m² | 14oz/ft²
 COLORES | COLOURS | COULEURS: FU-01 812-961 FU-02 961-812 FU-03 854-812

170x240 5'6"x7'9"
 200x250 6'6"x10'
 200x300 8'x10'

Piove



PV-01

PV-02

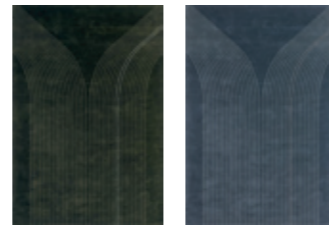
HAND TUFTED

100% LANA | 100% WOOL | 100% LAINE NZ.
 SISTEMA | SYSTEM | SYSTÈME: HAND TUFTED
 ALTURA | HEIGHT | HAUTEUR: 18mm | 0,70in
 PESO | WEIGHT | POIDS: 4.250gr/m² | 14oz/ft²
 COLORES | COLOURS | COULEURS: SA-01 812-961 SA-02 834-930

170x240 5'6"x7'9"
 200x250 6'6"x10'
 200x300 8'x10'

Vai

JOSE ALBORS



VA-01

VA-02

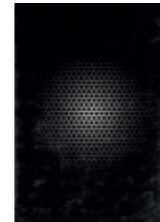
HAND TUFTED

100% LANA | 100% WOOL | 100% LAINE NZ.
 SISTEMA | SYSTEM | SYSTÈME: HAND TUFTED
 ALTURA | HEIGHT | HAUTEUR: 17mm | 0,66in
 PESO | WEIGHT | POIDS: 4.250gr/m² | 14oz/ft²
 COLORES | COLOURS | COULEURS: VA-01 815-863-921 VA-02 890-889-961

170x240 5'6"x7'9"
 200x250 6'6"x10'
 200x300 8'x10'

Akari

YUMI ENDO



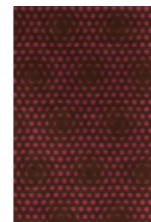
AK-01

HAND KNOTTED

80% LANA + 20% VISCOZA | 80% WOOL + 20% VISCOSE | 80% LAINE NZ. + 20% VISCOSE
 SISTEMA | SYSTEM | SYSTÈME: HAND KNOTTED 100L.
 ALTURA | HEIGHT | HAUTEUR: 10mm | 0,39in
 PESO | WEIGHT | POIDS: 4.000 gr/m² | 13oz/ft²
 COLORES | COLOURS | COULEURS: 812-961

170x240 5'6"x7'9"
 200x300 6'6"x10'
 8'x10'
 9'x12'

Botan



BT-01

HAND KNOTTED

70% LANA + 30% VISCOZA | 70% WOOL + 30% VISCOSE | 70% LAINE NZ. + 30% VISCOSE
 SISTEMA | SYSTEM | SYSTÈME: HAND KNOTTED 100L.
 ALTURA | HEIGHT | HAUTEUR: 10mm | 0,39in
 PESO | WEIGHT | POIDS: 4.000 gr/m² | 13oz/ft²
 COLORES | COLOURS | COULEURS: 824-957

170x240 5'6"x7'9"
 200x300 6'6"x10'
 8'x10'
 9'x12'

Miles

MONEO BROCK



ML-01

HAND KNOTTED

80% LANA + 20% BAMBÚ | 80% WOOL + 20% BAMBOO | 80% LAINE NZ. + 20% BAMBOU
 SISTEMA | SYSTEM | SYSTÈME: HAND KNOTTED 100L.
 ALTURA | HEIGHT | HAUTEUR: 10mm | 0,39in
 PESO | WEIGHT | POIDS: 4.000 gr/m² | 13oz/ft²
 COLORES | COLOURS | COULEURS: 989-995-909-15J-11A-14J-11P-11B-09K

170x240 5'6"x7'9"
 200x300 6'6"x10'
 250x300 8'x10'
 9'x12'

Alphabet



AF-01

HAND-TUFTED

100% LANA | 100% WOOL | 100% LAINE NZ.
 SISTEMA | SYSTEM | SYSTÈME: HAND-TUFTED
 ALTURA | HEIGHT | HAUTEUR: 18mm | 0,70in
 PESO | WEIGHT | POIDS: 4.250gr/m² | 14oz/ft²
 COLORES | COLOURS | COULEURS: 932-911

170x240 5'6"x7'9"
 200x300 6'6"x10'
 8'x10'
 9'x12'

Skyscraper

CLAUDIO COLUCCI



SS-01

HAND-TUFTED

100% LANA | 100% WOOL | 100% LAINE NZ.
 SISTEMA | SYSTEM | SYSTÈME: HAND-TUFTED
 ALTURA | HEIGHT | HAUTEUR: 17mm | 0,66in
 PESO | WEIGHT | POIDS: 4.250gr/m² | 14oz/ft²
 COLORES | COLOURS | COULEURS:

200x300 6'6"x10'

Skull

CLAUDIO COLUCCI



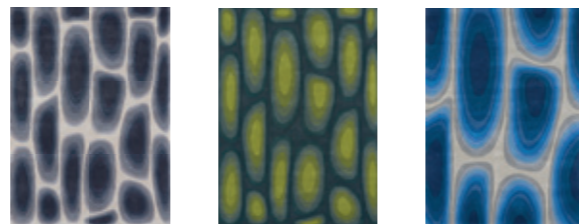
LL-01

HAND-TUFTED

100% LANA | 100% WOOL | 100% LAINE NZ.
 SISTEMA | SYSTEM | SYSTÈME: HAND-TUFTED
 ALTURA | HEIGHT | HAUTEUR: 17mm | 0,66in
 PESO | WEIGHT | POIDS: 4.250gr/m² | 14oz/ft²
 COLORES | COLOURS | COULEURS:

200x300 6'6"x10'

Cell



CE-01

CE-02

CE-03

HAND-TUFTED

100% LANA | 100% WOOL | 100% LAINE NZ.
 SISTEMA | SYSTEM | SYSTÈME: HAND-TUFTED
 ALTURA | HEIGHT | HAUTEUR: 20mm | 0,78in
 PESO | WEIGHT | POIDS: 4.750gr/m² | 16oz/ft²
 COLORES | COLOURS | COULEURS: CE-01 932-833-890-910-870 949-889-989-909-981 CE-02 833-911-931-930 870-890
 CE-03 995-889-975-993-973-953 875-913-933-893-873-872

170x240 5'6"x7'9"
 200x300 6'6"x10'
 8'x10'

In Vino



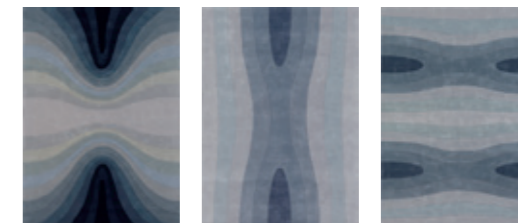
IV-01

HAND-TUFTED

100% LANA | 100% WOOL | 100% LAINE NZ.
 SISTEMA | SYSTEM | SYSTÈME: HAND-TUFTED
 ALTURA | HEIGHT | HAUTEUR: 18mm | 0,70in
 PESO | WEIGHT | POIDS: 4.250gr/m² | 14oz/ft²
 COLORES | COLOURS | COULEURS: 876-856

170x240 5'6"x7'9"
 200x300 6'6"x10'
 8'x10'

Squeeze 1, 2, 3



SQ-01

SQ-02

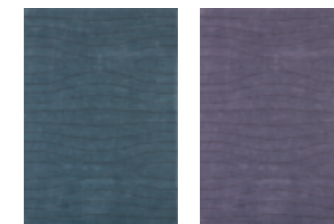
SQ-03

HAND-TUFTED

100% LANA | 100% WOOL | 100% LAINE NZ.
 SISTEMA | SYSTEM | SYSTÈME: HAND-TUFTED
 ALTURA | HEIGHT | HAUTEUR: 17mm | 0,66in
 PESO | WEIGHT | POIDS: 4.250gr/m² | 14oz/ft²
 COLORES | COLOURS | COULEURS: SQ-01 929-909-989-889 975-949-870-910 890-833-825-805 812 SQ-02 833-910-870 949-889-909
 SQ-03 833-910-870 949-889-909

170x240 5'6"x7'9"
 200x300 6'6"x10'
 8'x10'

Squeeze



SQ-10

SQ-11

HAND-TUFTED

100% LANA | 100% WOOL | 100% LAINE NZ.
 SISTEMA | SYSTEM | SYSTÈME: HAND-TUFTED
 ALTURA | HEIGHT | HAUTEUR: 17mm | 0,66in
 PESO | WEIGHT | POIDS: 4.250gr/m² | 14oz/ft²
 COLORES | COLOURS | COULEURS: WD-01 910 WD-02 950

170x240 5'6"x7'9"
 200x300 6'6"x10'
 8'x10'

Filaments

MICHAEL BANKS



FT-01

HAND-TUFTED

75% LANA + 25% VISCOSA | 75% WOOL + 25% VISCOSE | 75% LAINE NZ. + 25% VISCOSE
 SISTEMA | SYSTEM | SYSTÈME: HAND-TUFTED
 ALTURA | HEIGHT | HAUTEUR: 17mm | 0,66in
 PESO | WEIGHT | POIDS: 4.250gr/m² | 14oz/ft²
 COLORES | COLOURS | COULEURS: 902-822-825

170x240 5'6"x7'9"
 200x300 6'6"x10'
 8'x10'

Light Of The Moon

MICHAEL BANKS



LM-01

HAND-TUFTED

100% LANA | 100% WOOL | 100% LAINE NZ.
 SISTEMA | SYSTEM | SYSTÈME: HAND-TUFTED
 ALTURA | HEIGHT | HAUTEUR: 17mm | 0,66in
 PESO | WEIGHT | POIDS: 4.250gr/m² | 14oz/ft²
 COLORES | COLOURS | COULEURS: 961-812

170x240 5'6"x7'9"
 200x300 6'6"x10'
 8'x10'

Neon



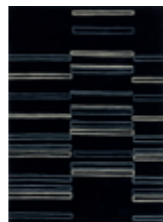
NE-01

HAND-TUFTED

100% LANA | 100% WOOL | 100% LAINE NZ.
 SISTEMA | SYSTEM | SYSTÈME: HAND-TUFTED
 ALTURA | HEIGHT | HAUTEUR: 17mm | 0,66in
 PESO | WEIGHT | POIDS: 4.250gr/m² | 14oz/ft²
 COLORES | COLOURS | COULEURS: 993-941-999-806

170x240 5'6"x7'9"
 200x300 6'6"x10'
 8'x10'

Skyscraper



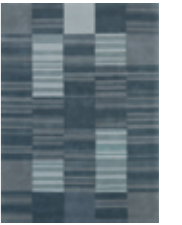
SK-01

HAND-TUFTED

100% LANA | 100% WOOL | 100% LAINE NZ.
 SISTEMA | SYSTEM | SYSTÈME: HAND-TUFTED
 ALTURA | HEIGHT | HAUTEUR: 17mm | 0,66in
 PESO | WEIGHT | POIDS: 4.250gr/m² | 14oz/ft²
 COLORES | COLOURS | COULEURS: 870-833-961-812

170x240 5'6"x7'9"
 200x300 6'6"x10'
 8'x10'

Streets



ST-01

HAND-TUFTED

100% LANA | 100% WOOL | 100% LAINE NZ.
 SISTEMA | SYSTEM | SYSTÈME: HAND-TUFTED
 ALTURA | HEIGHT | HAUTEUR: 17mm | 0,66in
 PESO | WEIGHT | POIDS: 4.250gr/m² | 14oz/ft²
 COLORES | COLOURS | COULEURS: 890-870-949-889 909

170x240 5'6"x7'9"
 200x300 6'6"x10'
 8'x10'

Urban



UR-01

HAND-TUFTED

100% LANA | 100% WOOL | 100% LAINE NZ.
 SISTEMA | SYSTEM | SYSTÈME: HAND-TUFTED
 ALTURA | HEIGHT | HAUTEUR: 18mm | 0,70in
 PESO | WEIGHT | POIDS: 4.250gr/m² | 14oz/ft²
 COLORES | COLOURS | COULEURS: 961-870-812

170x240 5'6"x7'9"
 200x300 6'6"x10'
 8'x10'

Amusée

VIDAL Y SATORRE



AM-01



AM-02

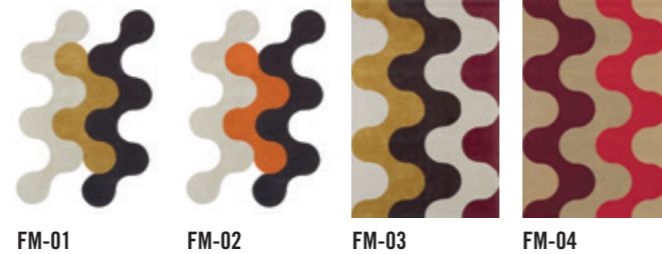
HAND-TUFTED

100% LANA | 100% WOOL | 100% LAINE NZ.
 SISTEMA | SYSTEM | SYSTÈME: HAND-TUFTED
 ALTURA | HEIGHT | HAUTEUR: 17mm | 0,66in
 PESO | WEIGHT | POIDS: 4.250gr/m² | 14oz/ft²
 COLORES | COLOURS | COULEURS: AM-01 981-829-915-986-957 AM-02 813-893-875-973 981

150x200 5'6"x7'9"
 170x240 6'6"x10'
 200x300 8'x10'

Flammes

VIDAL Y SATORRE



HAND-TUFTED

100% LANA | 100% WOOL | 100% LAINE NZ.
SISTEMA | SYSTEM | SYSTÈME: HAND-TUFTED
ALTURA | HEIGHT | HAUTEUR: 17mm | 0,66in
PESO | WEIGHT | POIDS: 4.250gr/m² | 14oz/ft²
COLORES | COLOURS | COULEURS: FM-01 986-845-981 FM-02 981-920-845 FM-03 986-845-981-887 FM-04 962-937-887

FM-01

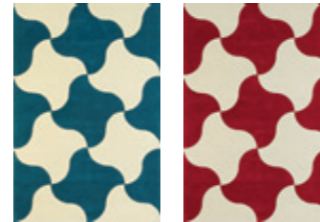
FM-02

FM-03

FM-04

150x200 5'6"x7'9"
170x240 6'6"x10'
200x300 8'x10'

Moulin À Vent



HAND-TUFTED

100% LANA | 100% WOOL | 100% LAINE NZ.
SISTEMA | SYSTEM | SYSTÈME: HAND-TUFTED
ALTURA | HEIGHT | HAUTEUR: 17mm | 0,66in
PESO | WEIGHT | POIDS: 4.250gr/m² | 14oz/ft²
COLORES | COLOURS | COULEURS: MV-01 961-835 MV-02 837-981

MV-01

MV-02

150x200 5'6"x7'9"
170x240 6'6"x10'
200x300 8'x10'

Piu Piu Cua Cua



HAND-TUFTED

100% LANA | 100% WOOL | 100% LAINE NZ.
SISTEMA | SYSTEM | SYSTÈME: HAND-TUFTED
ALTURA | HEIGHT | HAUTEUR: 17mm | 0,66in
PESO | WEIGHT | POIDS: 4.250gr/m² | 14oz/ft²
COLORES | COLOURS | COULEURS: PC-01 961-915-812 PC-02 961-837-812

PC-01

PC-02

150x200 5'6"x7'9"
170x240 6'6"x10'
200x300 8'x10'

Rêves Arabes



HAND-TUFTED

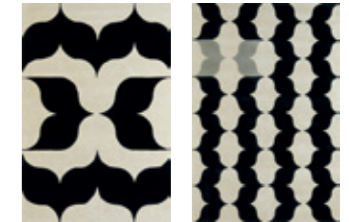
100% LANA | 100% WOOL | 100% LAINE NZ.
SISTEMA | SYSTEM | SYSTÈME: HAND-TUFTED
ALTURA | HEIGHT | HAUTEUR: 17mm | 0,66in
PESO | WEIGHT | POIDS: 4.250gr/m² | 14oz/ft²
COLORES | COLOURS | COULEURS: RB-01 981-806 RB-02 806-822-981-997

RB-01

RB-02

150x200 5'6"x7'9"
170x240 6'6"x10'
200x300 8'x10'

Un Papillon



HAND-TUFTED

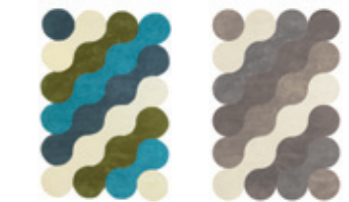
100% LANA | 100% WOOL | 100% LAINE NZ.
SISTEMA | SYSTEM | SYSTÈME: HAND-TUFTED
ALTURA | HEIGHT | HAUTEUR: 17mm | 0,66in
PESO | WEIGHT | POIDS: 4.250gr/m² | 14oz/ft²
COLORES | COLOURS | COULEURS: PN-01 812-981 PN-02 981-812-982

PN-01

PN-02

150x200 5'6"x7'9"
170x240 6'6"x10'
200x300 8'x10'

Vagues De La Mer



HAND-TUFTED

100% LANA | 100% WOOL | 100% LAINE NZ.
SISTEMA | SYSTEM | SYSTÈME: HAND-TUFTED
ALTURA | HEIGHT | HAUTEUR: 17mm | 0,66in
PESO | WEIGHT | POIDS: 4.250gr/m² | 14oz/ft²
COLORES | COLOURS | COULEURS: VM-01 890-961-915-829 VM-02 981-922-924-824

VM-01

VM-02

150x200 5'6"x7'9"
170x240 6'6"x10'
200x300 8'x10'

Touch Experience

MYNOW



EX-01

HAND KNOTTED

LANA BAMBOO CAÑAMO VISCOSA LINO BANANA SEDA NATURAL | WOOL BAMBOO HEMP VISCOSA LINEN

BANANE NATURAL SILK | LAINE NZ. BAMBOO CHANVRE VISCOSA LIN BANANE SOIE NATURELLE

SISTEMA | SYSTEM | SYSTÈME: HAND KNOTTED 80L

ALTURA | HEIGHT | HAUTEUR: 12mm | 0,47in

PESO | WEIGHT | POIDS: 4.500gr/m² | 15oz/ft²

COLORES | COLOURS | COULEURS: 960-986-919-820-837-867-807

170x240 5'6"x7'9"

200x300 6'6"x10'

8'x10'

Basic Bamboo Silk



BB-01

LOOM-KNOTT

BAMBÚ SEDA | BAMBOO SILK | SOIE BAMBOU

TRATAMIENTO SCOTCHGUARD™ | TREATMENT SCOTCHGUARD™ | TRAITEMENT SCOTCHGUARD™

SISTEMA | SYSTEM | SYSTÈME: LOOM-KNOTT

ALTURA | HEIGHT | HAUTEUR: 10mm | 0,39in

PESO | WEIGHT | POIDS: 4.000 gr/m² | 13oz/ft²

COLORES | COLOURS | COULEURS: 01A-03E-08C-10H-15J-18H-19F-06I-21B-20A

FEATURES CARACTERÍSTICAS CARACTÉRISTIQUES

100 % NATURAL FIBER / HIGH RESISTANCE AND DURABILITY / ECOLOGICAL / ANTI-BACTERIAL UN AGENT / SCOTCHGARD™ (DIRT REPELENT) / ANTIALLERGIC

100 % FIBRA NATURAL / ALTA RESISTENCIA Y DURABILIDAD / ECOLÓGICA / AGENTE UN ANTI-BACTERIANO / SCOTCHGARD™ (REPELENTE SUCIEDAD) / ANTIALÉRGICA

FIBRE 100% NATURELLE / HAUTE RÉSISTANCE ET DURABILITÉ / ÉCOLOGIQUE / AGENT UN ANTIBACTÉRIEN / SCOTCHGARD™ (RÉPULSIF DE L'ENCRASSEMENT) / ANTIALLERGIQUE

RUGS UP TO 2,70 m WIDE AND/OR 12m² OF TOTAL AREA.

FOR BIGGER SIZES, PLEASE ASK FOR QUOTATION.

ALFOMBRAS DE HASTA 2,70 m DE ANCHO Y 12m² DE ÁREA TOTAL.

PARA MEDIDAS MAYORES SOLICITAR PRESUPUESTO.

TAPIS JUSQU'À 2,70 M DE LARGE ET / OU 12M² DE LA SUPERFICIE TOTALE.

POUR LES ZONES PLUS GRAND, S'IL VOUS PLAÎT DEMANDE DE DEVIS.





Cleaning

We protect our carpets by treating them with Scotchgard™, which helps repel and clean stains.

We produce our carpets using the best fibres but they require **certain care to guarantee a longer life:**

- Vacuum the carpet regularly at medium power and always in the direction of the pile.
- Never use the brush attachment as it will damage the wool strands.
- Vacuum clean without rubbing so that any surplus fibres or fluff disappear.
- Check that the vacuum cleaner bag is clean.
- We recommend rotating the carpet to ensure that normal wear occurs uniformly.
- Do not use chemical products or dry clean the carpet as this will damage its colours.
- Every so often take the carpet to a specialized carpet-cleaning establishment.

Cleaning care:

- When a stain occurs take action as quickly as possible. Wipe the stained area with a damp, white cloth to get rid of most of the stain, especially if the carpet has an anti-stain treatment.
- Never rub a liquid stain, try to soak it up using a clean cloth, absorbent cardboard or sponge.
- Always use cold or warm water, never hot water as this fixes the stain
- If the stain is a solid or gooey product it should be removed first using a spatula or damp spoon before applying a stain remover.
- This operation should be performed from the outside to the inside.
- Try to get rid of all remains of the stain before applying a stain remover.
- Before using a product read the instructions carefully and check that it will not discolour the carpet.

Limpieza

Protegemos nuestras alfombras con el tratamiento Scotchgard™, que ayuda a repeler y limpiar las manchas.

Fabricamos nuestras alfombras utilizando las mejores fibras, pero es necesario aplicar ciertos **cuidados para garantizar una vida más larga:**

- Aspirar la alfombra regularmente a media potencia y siempre en el sentido del pelo.
- No utilizar nunca el aspirador en cepillo, ya que perjudicará los hilos de la lana.
- Aspirar sin frotar para que la pelusilla y el exceso de fibras desaparezcan.
- Vigilar que la bolsa esté limpia.
- Conviene rotar la alfombra para que el lógico desgaste sea uniforme.
- No utilizar productos químicos ni limpiar en seco, ya que perjudicaremos los colores de la alfombra.
- Llevarla cada cierto tiempo a una tienda especializada en la limpieza de alfombras.

Cuidados en limpieza:

- Hay que intervenir lo antes posible, pasando un paño blanco humedecido ligeramente en agua para eliminar la mayor parte de la mancha, especialmente si la alfombra tiene un tratamiento anti-manchas.
- Nunca hay que frotar una mancha líquida. Hay que tratar de absorberla con un paño limpio, un cartón absorbente o una esponja.
- Debemos utilizar siempre agua fría o templada, nunca agua caliente, porque fija la suciedad.
- Si la mancha es pastosa o sólida, hay que quitarla previamente con la ayuda de una espátula o una cucharilla humedecida antes de aplicar un quitamanchas.
- Esta operación debe llevarse desde el exterior hacia el interior.
- Procurar quitar todos los restos de mancha antes de aplicar cualquier quitamanchas.
- Antes de usar cualquier producto, leer detenidamente las indicaciones y comprobar que no va a ocasionar decoloración.

Entretien

Nous protégeons nos tapis grâce au traitement Scotchgard™ qui repousse l'humidité et nettoie les taches.

Nous fabriquons nos tapis avec les meilleures fibres mais certains **soins pour garantir une durée de vie plus longue** sont nécessaires :

- Aspirer le tapis régulièrement à mi puissance et toujours dans le sens des poils.
- Ne jamais utiliser la brosse de l'aspirateur qui risquerait d'endommager les fils de laine.
- Aspirer sans frotter pour que les peluches et l'excès de fibre disparaissent.
- S'assurer que le sac est propre.
- Il est préférable de faire pivoter l'aspirateur afin que l'usure normale soit uniforme.
- Ne jamais utiliser de produits chimiques ou nettoyer à sec car nous endommagerions les couleurs du tapis.
- Emmener le tapis à intervalles réguliers dans une boutique spécialisée en entretien de tapis.

Soins de nettoyage :

- Il faut intervenir dès que possible, en passant un chiffon blanc légèrement humidifié pour éliminer grossièrement la tache et notamment si le tapis a subi un traitement antitaches.
- Ne jamais frotter une tache liquide. Il faut l'absorber avec un chiffon propre, un carton absorbant ou une éponge.
- Toujours utiliser de l'eau froide ou tiède, en aucun cas chaude car elle fixerait les saletés.
- Si la tache est pâteuse ou solide, il faudra préalablement l'ôter à l'aide d'une spatule ou d'une cuillère humidifiée avant d'appliquer un produit antitaches.
- Cette opération doit être réalisée de l'extérieur vers l'intérieur.
- Tenter d'ôter tous les restes de tache avant d'appliquer le produit antitaches.
- Avant d'utiliser n'importe quel produit, veuillez lire avec soin les indications et vérifier qu'il n'y a aucun risque de décoloration.

*Thanks you all our families, friends,
clients, colleagues, suppliers collaborators &
professionals that made this catalogue possible*

THANK YOU | GRACIAS | MERCI

NOW CARPETS S.C.

Pº INDEPENDENCIA 8 DUP. 2ª
50004 ZARAGOZA SPAIN
TEL: +34 976 46 36 45
FAX: +34 976 36 43 14
now@nowcarpets.com

NOW CARPETS USA INC.

174 FIFTH AVE. SUITE 503
New York, NY 10010 USA
TEL: +1 646 583 29 49
usa@nowcarpets.com