

Il Colonnato
Minera stone
dining table 140 x 140
5 legs,
by Mario Bellini

kettal

Minera stone dining table 140 x 140 5 legs

Designer
Mario Bellini

Collection
Il Colonnato

Reference
KSA1-007-00

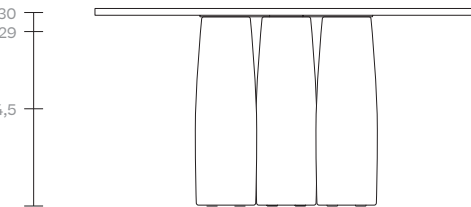
1/2

In this project, Mario Bellini took his inspiration from a basic elemental structure in architecture. His design emulated the colonnade of classical architecture, in which a sequence of columns supports a portico, in this case a table top. The base is a visually closed volume, despite being materially open. When seen from a different viewpoint, perception changes completely, as the columns no longer overlap and the space appears empty.

cm/inch

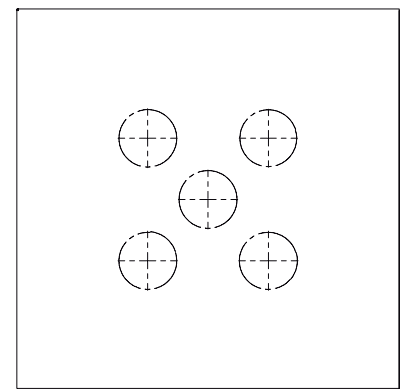
76,2/30
73,7/29

36,9/14,5



cm/inch

140/55,1



36,9/14,5



kettal

Minera stone dining table 140 x 140 5 legs

Designer
Mario Bellini

Collection
Il Colonnato

Reference
KSA1-007-00

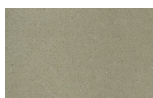
2/2

Materials

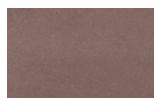
Minera Stone
Water repellent

Colour Options

Minera Stone



Antique Rose
MI3



Atlas
MI4

Maintenance

We suggest to treat our Minera stone as a product made of natural stone or marble. We suggest not to use abrasive sponges, corrosive detergents, limescale removers, bleach (if in solution > 10%), ammonia (if in solution > 10%), vinegar, abrasive pastes

The quick removal of stains guarantees a better maintenance of the products.