

Products / Dining Tables / Mari-sol 3-legged Double Table Base

Mari-sol 3-legged double table base

by Eugeni Quitllet

Mari-sol Collection, designed by Eugeni Quitllet for Vondom, is composed by a design table that **combines technology in its function with sensuality** in its shape. The answer for adorning terraces around the world.



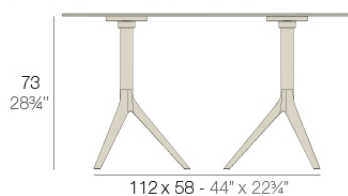
Info

Description

Extruded aluminum tube with cast aluminum base coated with epoxy baked painting. Item suitable for indoor and outdoor use. Table top not included.

Weight: 6.88 Kg

BASE 3 LEGS - BASE 3 PATAS



fixed top / fijo *ref.65031*

collapsible top / abatible *ref.65031T*

MARI-SOL BASE DOBLE 112x58 H73

MARI-SOL DOUBLE BASE 44x22 3/4" H28 3/4"

TABLE TOPS OPTIONS - OPCIONES SOBRES



Accessories

- **HPL**

HPL black edge

- **NONAME-66112B**

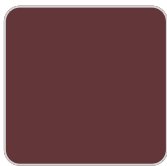
SOLID CORESolidCore

Finishes

finishes

Fixed

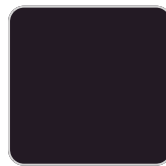
Ref. 65031



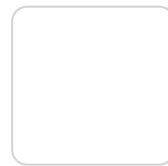
purjai red



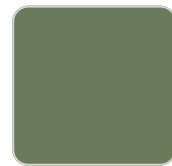
black



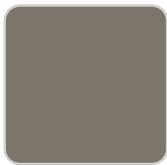
notte blue



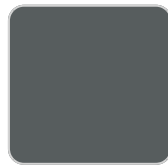
white



pickle



british gray



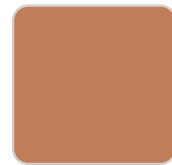
traffic gray



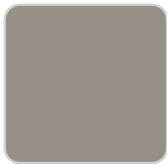
almond



crema



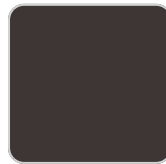
melon



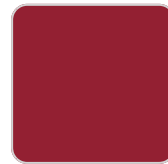
castoro fiber



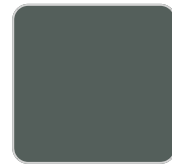
mostaza



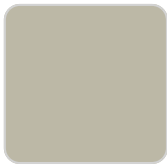
bronze



red



modo green

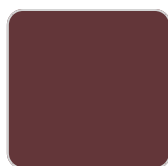


ecru

Powder coated aluminum base with non collapsable attachment made of polyamide and fiber glass

COLLAPSIBLE TOP

Ref. 65031T



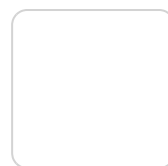
purjai red



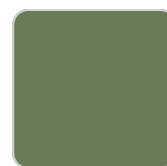
black



notte blue



white



pickle



british gray



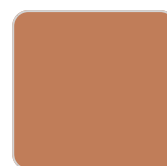
traffic gray



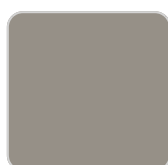
almond



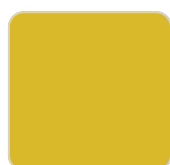
crema



melon



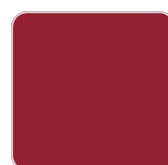
castoro fiber



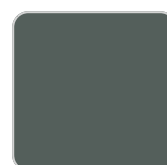
mostaza



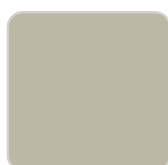
bronze



red



modo green



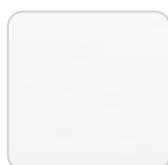
ecru

Powder coated aluminum base with 90° collapsable attachment made of polyamide and fiber glass

tabletops

HPL

Ref. 66031



white



black



ecru

HPL black edge

