

punt

Art, craft & design

Storage. Almacenaje



Rio 5-7
Sebastian Herkner



Velasca 8-11
Ludovica y Roberto Palomba



Times 12-15
Jose Perez



Chicago 16-17
Norm Architects



Malmö 18-21
Mario Ruiz



Stockholm 22-29
Mario Ruiz



Sussex 30-31
Terence Woodgate



Tactile 32-33
Terence Woodgate



Slat 34-37
Marc Krusin



Stockholm 38-45
Mario Ruiz



Literatura Open 46-47
Vicent Martínez



46-47



Literatura Selection 48-49
Vicent Martínez



Literatura Classic 47
Vicent Martínez

Tables. Mesas



Stockholm 50-53
Mario Ruiz



Mitis 54-55
Mario Ruiz



Núcleo 56-57
Victor Carrasco

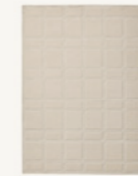


Stockholm 58-59
Mario Ruiz

Rugs. Alfombras



Stockholm rug 8,24,32
Mario Ruiz 38,40,50
61,64,66

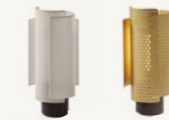


Chicago rug 4,6
Norm Architect 11,17
30

Lighting. Iluminación



Stockholm 6,22
Mario Ruiz 29,30,42



Rio 4-6,12
Sebastian Herkner 13,38
40,50



Chicago 8,17
Norm Architects 32,36

Seating. Asientos



Amor Cortese 60-63
Monica Armani



Gin 64-65
Terence Woodgate



Sena 66-71
Christophe Pillet



Hug 72-73
Studi Manel Molina



Mava 74-75
Stephanie Jasny



Ernest 76-77
Borja Garcia

Others. Otros



Breda bed 78-79
Borja Garcia



Elx 77
Vicent Martínez



RIO by Sebastian Herkner

The Rio collection is based on my fundamental design language working with honest materials and local craftsmen to achieve unique designs. For Punt I selected solid wood, structured glass, marble, textile and brass to create a collection of cabinets and lamps. Rio is about the balance of materials and the balance of proportions. The Rio cabinets have in common that they are all placed on solid marble cylinders. They provide stability and grandeur in contrast to the precise and fine crafted cabinets on top.

The Rio lamps use the same principle. Like sails of a boat the three lampshades are resting on the marble cylinders. The sails are done in textile or brass with a decorative pattern of holes.





VELASCA
by Ludovica+Roberto Palomba

An architectural, linear, and minimal project, not without elements of warmth.
Wood is the protagonist in its essence and in the detail of the doors characterized by a vertical pattern that denotes three-dimensionality to an essential object.
Once again Ludovica+Roberto Palomba designs a minimalist masterpiece that does not renounce to excite for Punt Mobles, a Spanish company that has always been characterized by the care and refinement of the details of their projects.
A winning, versatile project that furnishes and solves functionality in urban spaces, but which, thanks to wood and its declination, brings warmth and texture to the space.





TIMES
by Jose Pérez

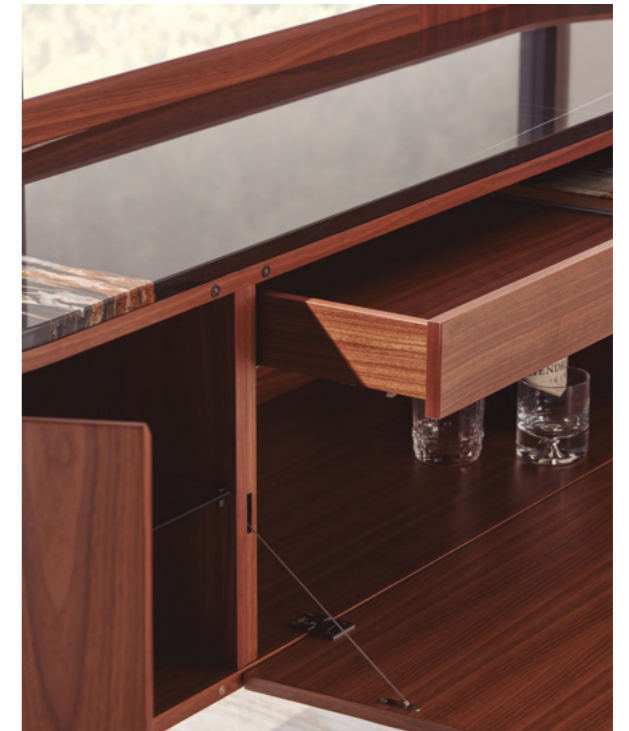
Times, designed by Jose Pérez – Punt’s creative director - is a collection of sideboards that aims to add sophistication and differentiation to any project. Its rounded lines, minimalism and handcrafted details, both internally and externally, make it unique and different.

The top surface can be marble, glass, mirror glass or leather, the body oak or ebony and its delicate feet bronze or black.

Times is an elegant and minimalist piece, whose aim is to cover both the functional and aesthetic requirements that a good design needs.



Bronze mirror



Sahara marble



Black leather



CHICAGO by Norm Architects

Inspired by the modernist architecture and the unobstructed repetitive building techniques known from the mid century, the Chicago cabinet collection stands as a tribute to this particular architectural period.

With its light and floating appearance the sideboard almost appears as a piece of modern architecture itself. The elevated solid steel construction gives stability and structure while the floating wooden cabinet adds the spacial impression.

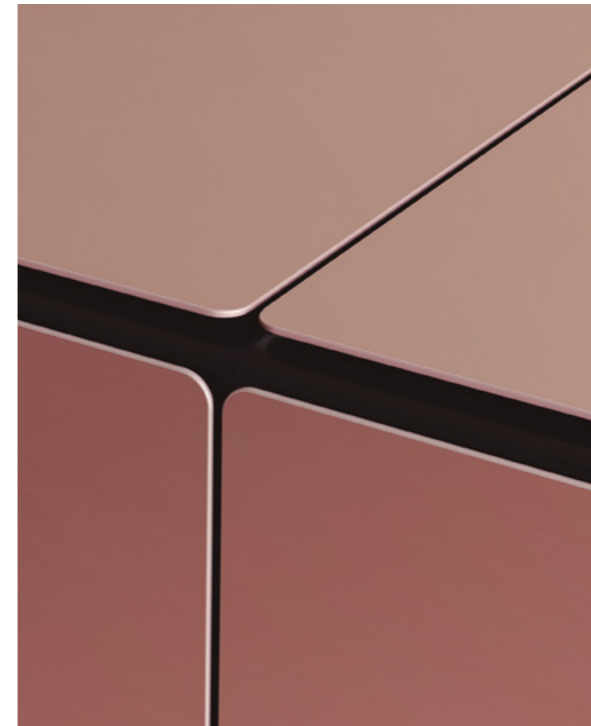
The table top functioning as a floating roof with its extended eaves completes the minimalistic framework combining three simple natural materials, wood, steel and stone.



MALMÖ
by Mario Ruiz

Mario Ruiz's collection let you discover, as speleologists do, the space where the sideboard collection gathers different layers of different materials.

Precious materials arise from the delicate wooden curves and become the main players.

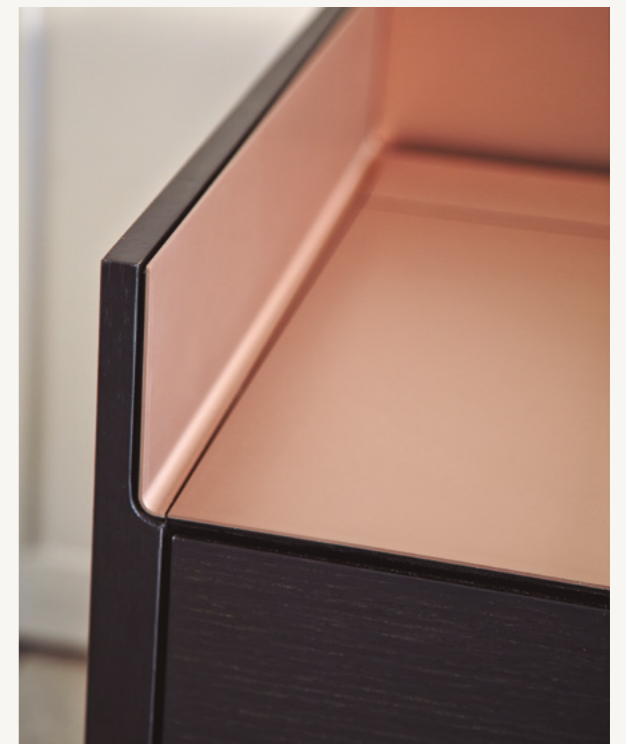
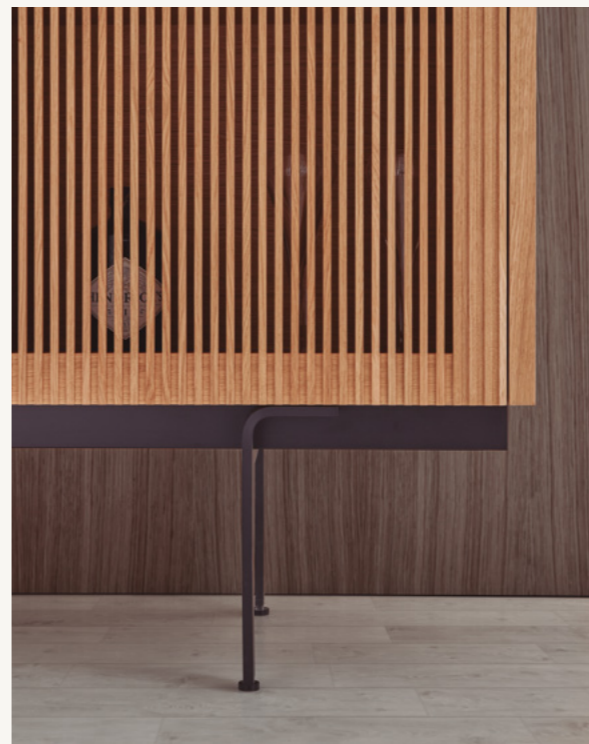


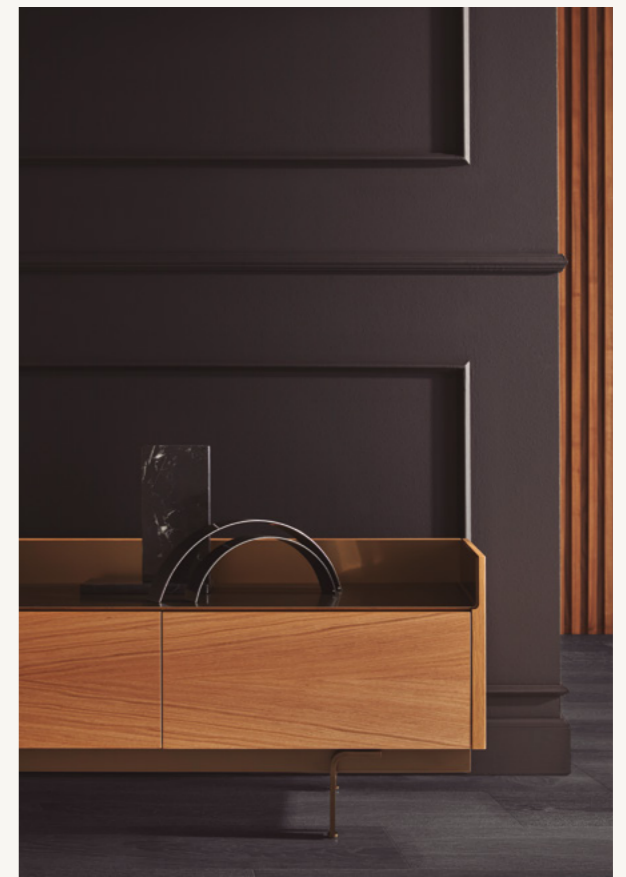


STOCKHOLM
by Mario Ruiz

A collection of sideboards, chests of drawers and TV benches, winner of the Red Dot 2015 Award, with a singular aluminium finish on the top surface.

A new kind of sophistication—in the quality and combination of materials, and in the precise styling and balanced radius.









SUSSEX
by Terence Woodgate

The overlapping slats on the front of the module, look beautiful. What will open if you pull one of them? A door or a drawer?

A collection of sideboards and TV benches with an exclusive design on the front consisting of horizontal bars hiding the composition besides serving as handles for doors and drawers. A piece of furniture resting on a plinth, on adjustable feet or hanging from optional wall-fixing devices. The door elements include a height-adjustable shelf.



Tactile
by Terence Woodgate

A collection of sideboards, winner of the Wall Paper 2008, subtly supported at their ends by slender legs with adjustable feet.

This collection has no handles; a simple touch initiates the opening of a door or a drawer.



SLAT
by Marc Krusin

Flat surfaces that grow, using container units with doors, drawers, niches or open spaces. Slats can be placed against a wall or used as a space divider, with its container units facing either way.

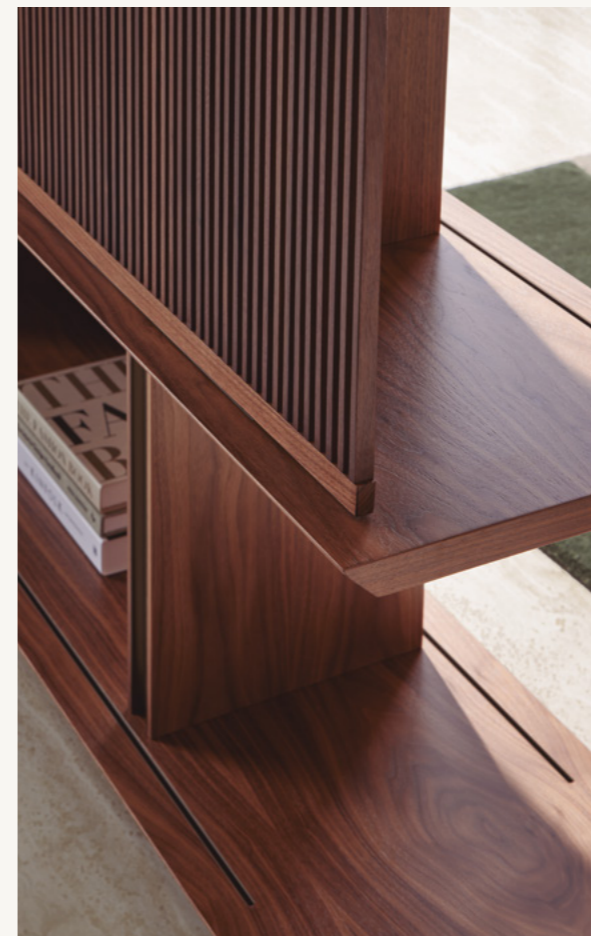


*OPEN sideboard
by Vicent Martínez*



STOCKHOLM by Mario Ruiz

The new Stockholm bookcase, inspired by the iconic collection of sideboards from the same collection, seeks to cover both the aesthetic and functional needs of any bookcase. As a result of its sliding slatted, aluminum or veneered panels, you can hide objects and create magic with light and shadows. This full of details and sophistication collection will highlight any project.









WRIGHT

ALPHABETICALLY
Style Formas
PORCUPINE

LONGER
DIGITAL BY DESIGN
The Impressionists at Home

OOOF

THE HISTORY OF
NEW BEAUTY
THE HISTORY OF
THE HISTORY OF



Literatura Classic. 1985

LITERATURA OPEN by *Vicent Martinez*

A collection of mobile bookcases, bookcases, sideboards and TV benches inspired by the classic and legendary “La Literatura” bookcase, designed in 1985 and winner of several prizes and awards, such as the 1986 ADI FAD selection, displayed in museums and an undeniable contribution for Punt Mobles to obtain the National Award of Design in 1997. Classified as a contemporary classic since 1997. Its distinctive bookcases on casters have been used for decades for storing thousands of books, hosting the digital era and integrating into all kinds of architecture and interior design works. In this version, OPEN, designed in 2014, the volumes are transparent and even lighter, so they can hold containers and be used as room partitions.



SELECTION

La Literatura celebrates its 35th anniversary with another very special version.

Noble, exquisite materials like wood and metal make it more selected, elegant, exquisite and subtle.





STOCKHOLM TABLE
by Mario Ruiz

The iconic Stockholm sideboard inspires a table for the same collection. The delicate and sophisticated marriage between noble woods and the elegant colours of anodized aluminium makes the Stockholm table especially charming. Elegant joints, grommets and a table designed to be tailor-made complete our offer.





MITIS
by Mario Ruiz

A collection of tables with a solid appearance and exquisite detail both in the tabletop and in the trestle-like grooved legs.



NUCLEO
by Víctor Carrasco

Regular and low tables for homes and contract, in different shapes and subtly conceived proportions. Available in a wide range of finishes and sizes.



STOCKHOLM
by Mario Ruiz



AMOR CORTESE
by Mónica Armani

Sofas and loungers with a particular curved plywood back and solid wood plinth. For transport and access purposes, elements are delivered unassembled.





GIN
by Terence Woodgate

A collection of sitting units with or without backs for resting both in facilities and at home.

Thanks to the simple, double, corner modules and the variety of arms and electronic accessories, you can create the shape you need according to the type of project.





SENA
by Christophe Pillet

Sena is a collection of seats that, thanks to the simplicity of its geometric lines, makes it versatile for any type of project as well as providing warmth and comfort to the space.







HUG
by estudi Manel Molina

High-end woods and metals together with soft textiles and padding. Versatility and beauty for personal and professional lives. An irresistibly sumptuous sensory experience.



MAVA
by Stephanie Jasny

Mava was developed with the intention to create a basic chair that fits into various interiors. The result is a wooden armchair, combining a strong structure with a light appearance, suitable for multiple needs.





Vicent Martínez. 1997

ERNEST
by Borja García

This desk, finalist for the Delta 2013 Awards, blends modern outlines and functions together with past times details. Its size and proportions make it perfect for small spaces. A lid gives access to a space where small items can be stored reminding us of memories of the past.

ELX
by Vicent Martínez

Sculptures where the hangers are like curved palm tree leaves.



BREDA
by Borja Garcia

Beds with or without a canopy, with a plain and subtle outline and solidly built, providing elegance and design to the rooms of a hotel or a home. The headboards, wooden or upholstered, give versatility to the piece.

More info at
www.puntmobles.com

2D files
3D files
Revit
Technical info
Photos
White background photos
Certificates
Presentations

CREDITS

Creative director
Jose Pérez

Photographer
Angel Segura

Ricardo Cano