



LIVING

—  
AM FURNITURE GROUP  
SINCE 1962

TAILOR  
MADE

KITCHEN & WINE CELLARS / WARDROBE & BATH





**AM FURNITURE GROUP**  
SINCE 1962

WITH ALMOST SIX DECADES OF HISTORY, TRADITION AND INNOVATION, AMFURNITURE GROUP WAS BORN FROM ARMANDO AND FERNANDA SILVA'S DREAM OF BRINGING HIGH-END WOODWORK CRAFTSMANSHIP AND TECHNICAL EXPERTISE TOGETHER.

ESTABLISHED IN PAÇOS DE FERREIRA, THE NORTHERN-PORTUGUESE HEART OF FURNITURE INDUSTRY, THE COUPLE CREATED AMFURNITURE GROUP, WHICH ROOTED ITS NAME IN THE PILLARS OF QUALITY AND PERMANENT INNOVATION.

OUR EXCLUSIVE AIM IS TO BRING THE UPMOST COMFORT AND BEAUTY TO HOUSES AND PEOPLE ALL AROUND THE GLOBE.

60  
years

develops and manufactures  
furniture since 1962, combining  
handwork expertise with  
technology and innovation

TRAVELLO

MAD

KITCHEN & WINE CELLARS / WARDROBE & BATH



**AM LIVING** ENCOMPASSES TRADITION AND NEWNESS ALL AT ONCE IN TWO DISTINCT COLLECTIONS. THE CLASSIC COLLECTION GATHERS THE BEAUTY AND DELICATENESS OF TIMELESS DESIGN AND THE CONTEMPORARY COLLECTION THAT HIGHLIGHTS THE REFRESHING NOVELTY OF MODERN PIECES.

THE **TAILOR MADE** CATALOG COMBINES THIS EXQUISITE BLEND OF STYLES AND OFFERS A HIGH-QUALITY CUSTOMIZATION SERVICE FOR KITCHENS AND WINE CELLARS, WARDROBE AND BATHROOM DESIGNS.

FOCUSING ON ADAPTABILITY, SPACE UTILIZATION AND HIGH-END DESIGN, **TAILOR MADE** EMPHASIZES VERSATILITY AND FUNCTIONALITY WHILE REMAINING TRUE TO ITS LEGACY OF ARTISANSHIP. AS A NEW PAGE TURNS, YOU WILL BE SURE TO FIND THE PERFECT FIT FOR YOUR CUSTOM INTERIOR DESIGN PROJECT.

**TAILOR MADE** IS LIKE A CANVAS TO YOUR MOST CHERISHED PROJECTS AND IDEAS: EVERY PIECE IS CUSTOMIZABLE AND CAN BE ADAPTED IN ORDER TO INTEGRATE THE SPACE YOU NEED TO FURNISH. A PANOPLY OF COLORS AND FINISHES IS AT YOUR DISPOSABLE, ALLOWING FOR A FULL CUSTOMIZATION EXPERIENCE.

**AM LIVING: YOUR DREAM PROJECT IS TAILOR MADE.**

<b>AMARI</b> KITCHEN & WINE CELLAR		8	<b>DIRECTOIRE</b> KITCHEN		76
<b>AMARI</b> KITCHEN		24	<b>ENEIDA</b> KITCHEN		86
<b>CARTER</b> KITCHEN & WINE CELLAR		34	<b>ENEIDA</b> KITCHEN		94
<b>DEVON</b> KITCHEN & WINE CELLAR		48	<b>QUINCY</b> KITCHEN		102
<b>DIRECTOIRE</b> KITCHEN & WINE CELLAR		62	<b>QUINCY</b> KITCHEN & WINE CELLAR		110

# KITCHEN & WINE CELLARS

**DRAWERS** | 220  
DOORS

**DRAWERS** | 222  
ORGANIZERS

**HANDLES** | 224

**FINISHES** | 226  
GLASS / WOOD / LACQUERED / SPECIAL

# / WARDROBE & BATH

**AMARI** | 126  
WARDROBE & BATH

**AMARI** | 138  
WARDROBE & BATH

**BLOSSOM** | 148  
WARDROBE & BATH

**CARTER** | 160  
WARDROBE & BATH

**DIRECTOIRE** | 172  
WARDROBE & BATH

**ENEIDA** | 184  
WARDROBE & BATH

**QUINCY** | 196  
WARDROBE & BATH

**CUSTOM MADE** | 210  
BATH





# TAILOR MADE

/ KITCHEN & WINE CELLARS /





# AMARI KITCHEN & WINE CELLAR

PLAYING WITH A SOFT BEIGE TONALITY AND A CHOCOLATE BROWN HUE, **AMARI KITCHEN** SHOWCASES A PERFECTLY SYMMETRIC AMBIANCE THAT EVOKES PEACE, TRANQUILITY AND HARMONY. THE USE OF LIGHT AND DARK TEXTURED OAK, SUBTLE TOUCHES OF GOLDEN BRASS, MARBLE, RIBBED GLASS AND A GREY LACQUERED FINISH IN THE UPPER CABINETRY RESULTS IN A DELICATELY MODERN ENVIRONMENT MARKED BY SIMPLICITY, FUNCTIONALITY AND AN INTENTIONAL SEARCH FOR WELLBEING AND BALANCE.

ENDOWED WITH A SINK, THE KITCHEN ISLAND CONDENSES THE TONAL DUALITY AND SYMMETRY OF THE WHOLE SET, ALLOWING FOR THE STORAGE OF ESSENTIAL ITEMS WHILE PROVIDING A SMALL SEATING AREA THAT ACCOMMODATES THREE PEOPLE. ALTOGETHER AND WRAPPED IN CALMING WOOD TONES, **AMARI KITCHEN** IS A TOKEN OF MODERN DESIGN AND SLOW LIVING. DISPLAYING THE SAME SOOTHING TONALITIES, **AMARI WINE CELLAR** COMES OUT AS AN OUTSTANDING ADDITION TO YOUR PLACE. COMPOSED BY A CENTRAL CABINET WITH A BUILT-IN SINK, IT DISPLAYS A THREEFOLD STRUCTURE, WHICH FAVORS SPACE UTILIZATION. COMPLETELY TAILOR-MADE, THIS ELEGANT CUSTOM-CABINET IS ENDOWED WITH COUNTLESS SHELVES, DRAWERS AND WINE AND GLASS RACKS. THE WHOLE CELLAR BENEFITS FROM A THOUGHTFUL REFRIGERATING SYSTEM – A MUST-HAVE FOR WINE LOVERS AND COLLECTORS.

**FINISHES** HAZELNUT / PECAN / GREY 2 LACQUER  
**GLASS** RIPPLE TEXTURED  
**HANDLE** C GOLDEN























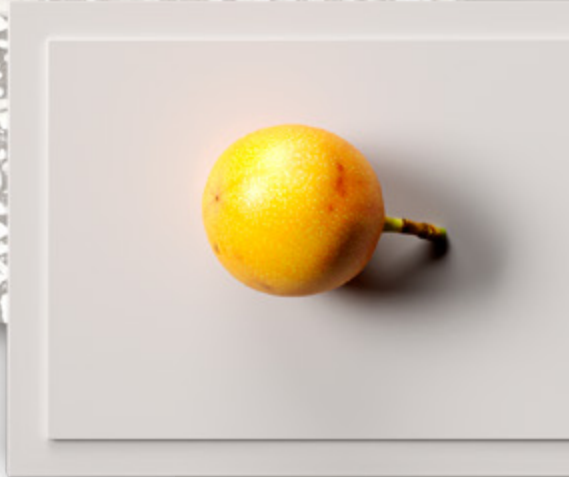












IN A SERENE FASHION, **AMARI KITCHEN** PLAYS WITH COLOR AND SHAPE, SHOWCASING A BALANCED AMBIANCE THAT BETS ON A MIX AND MATCH OF BEIGE, BROWN, WHITE AND GRAY TONES. ITS MODERN AND MINIMALIST APPROACH TO DESIGN AND DÉCOR RESULTS IN A PROFOUND APPRECIATION FOR GEOMETRIC FORMS AND DIVERSE TEXTURES AND THE DISPLAY OF PIECES THAT COMPREHEND BOTH A STRONG AESTHETIC APPEAL AND A GREAT DEAL OF FUNCTIONALITY. THE CHOICE OF A SOFT GRAY MARBLE FOR THE COUNTERTOPS AND WALLS EVIDENCES THE SEARCH FOR EQUILIBRIUM AND THE DESIRE TO BLEND IN AND REVEAL THE LIGHTNESS OF THE WHITE LACQUER FINISH AND THE EXQUISITE PATTERN OF THE FLOOR TILES. THE DARK MIRROR USED FOR THE CENTRAL CABINETRY BRINGS ABOUT THE MYSTERY AND WARMTH OF THE SOFT GREY PALETTE, FILLING THE ENVIRONMENT WITH TRANQUILITY.

SPACIOUS AND COMMODIOUS, **AMARI KITCHEN** IS ENDOWED WITH A CONVENIENT AND USEFUL PANTRY THAT ALLOWS FOR GROCERY AND DISH STORAGE AND A FORWARD-LOOKING DINING AREA THAT COMES IN HANDY FOR A FAMILY MEAL.

**AMARI**  
**KITCHEN**

**FINISHES** PECAN / COCO SIMPLES LACQUER  
**HANDLE** C BLACK









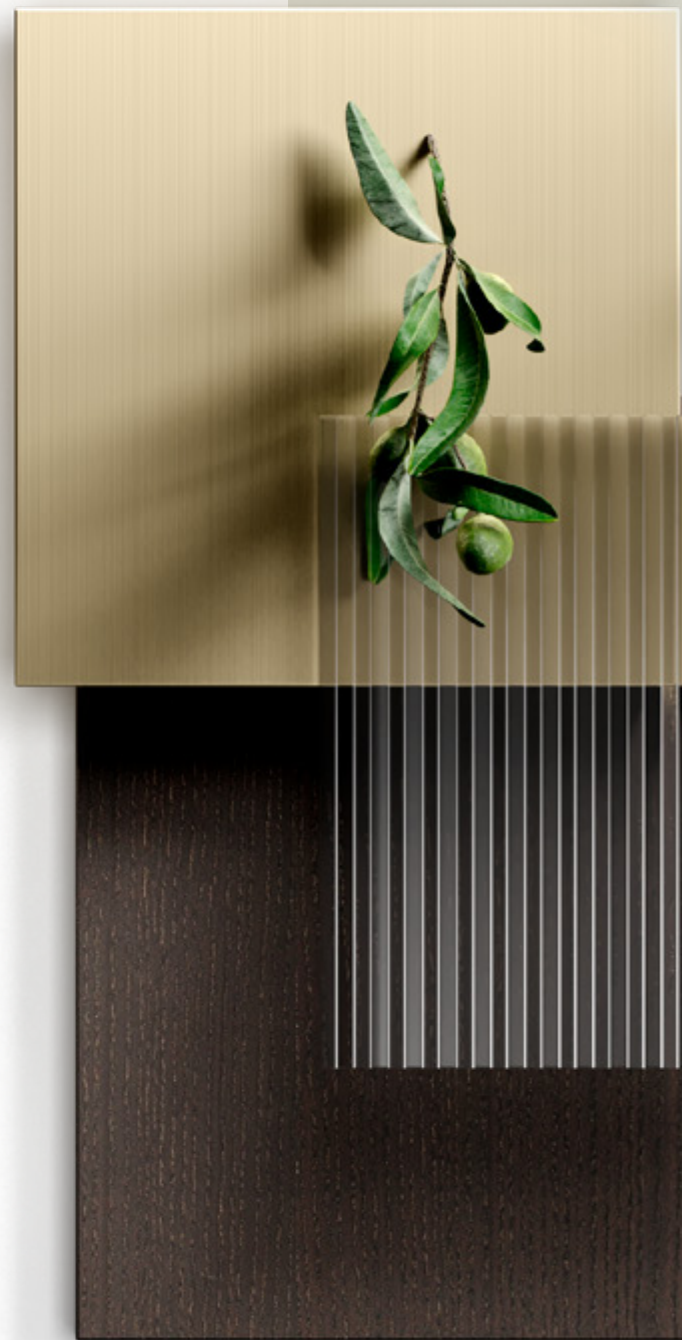












# CARTER KITCHEN & WINE CELLAR

FOCUSING ON THE ESSENTIAL, **CARTER KITCHEN** HAS ITS OWN EXPRESSION AND BARELY REQUIRES THE USE OF DÉCOR OR ACCESSORIES. ITS LIGHT AND SERENE PERSONALITY BRINGS ABOUT A PEACEFUL AND HARMONIOUS AMBIANCE THAT EXPLORES THE REFINEMENT OF TRUE SIMPLICITY. ITS CLEAN-CUT DESIGN DISPLAYS A FONDNESS FOR THE TEXTURE AND CHARACTER OF OAK, COUPLED WITH THE USE OF BRASS AND GOLDEN DETAILS THAT ADD A TOUCH OF SOPHISTICATION TO THE ENVIRONMENT. DUE TO ITS DELICATENESS AND GRACIOUSNESS, CALACATTA GOLD MARBLE IS THE MOST SUITABLE CHOICE NOT ONLY TO COMPLEMENT THE WALLS AND FLOOR BUT ALSO FOR THE SINK AND KITCHEN ISLAND COUNTERTOPS. THE INTRICATE USE OF RIBBED GLASS BLENDS PERFECTLY WITH THE BEIGE AND GOLD HUES THAT FILL THE WHOLE ATMOSPHERE, MAKING EACH DETAIL EXHALE TRANQUILITY, BALANCE AND TASTEFULNESS. ENDOWED WITH THE SAME UPLIFTING SPIRIT, THE SPLENDID **CARTER WINE CELLAR** IS THE EPITOME OF GRACEFULNESS AND HIGH-END DESIGN. COMPACT, PRACTICAL AND ABSOLUTELY ALLURING, IT GATHERS SUPERB CABINETRY WITH ORIGINALITY AND A TOUCH OF REFINEMENT. WITH SEVERAL SHELVING UNITS, GLASSWARE DRAWER ORGANIZERS AND BOTTLE RACKS, THIS CUSTOM-MADE CELLAR IS PERFECT TO STORE FINE WINE AND A GREAT EXCUSE TO INVITE FRIENDS OVER FOR A DELIGHTFUL DRINK.

**FINISHES** PECAN

**GLASS** RIPPLE TEXTURED

**HANDLE** G GOLDEN (S + M)





















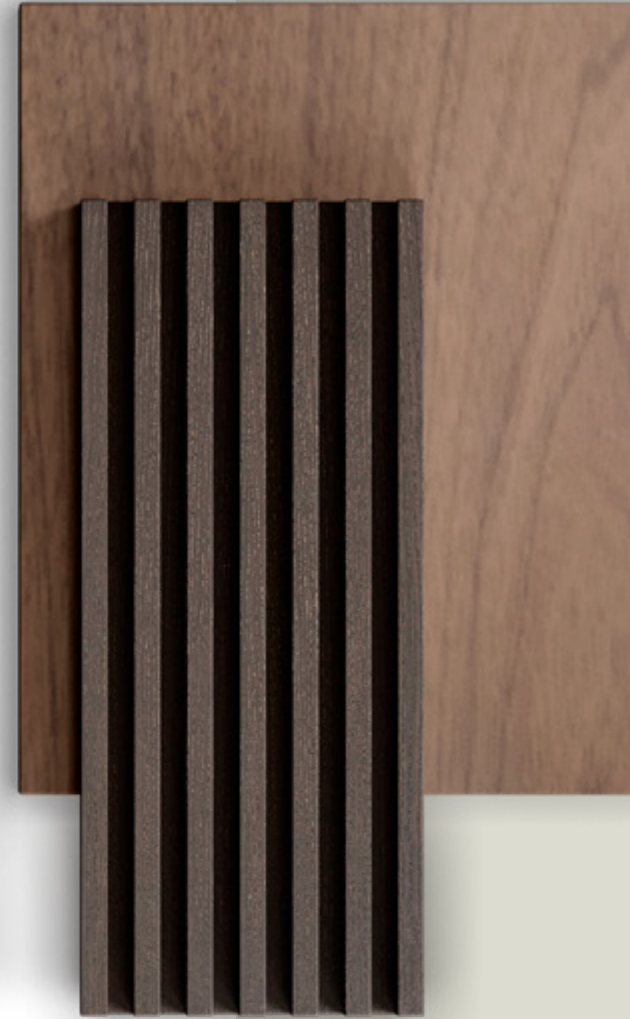












IN DARK BROWN AND BLACK HUES, **DEVON KITCHEN** FULLY ENCOMPASSES A MODERN SENSE OF PRACTICALITY AND YOUTHFULNESS. ITS CABINETRY AND SINK RELY ON ASH WOOD AND ITS DIM TO MATCH THE KITCHEN ISLAND, MADE OF WALNUT. THE USE OF BLACK MARBLE WITH SMALL TAINTS OF WHITE GOES WELL WITH THE BLACK IRON PULLS, CREATING A BURROW OF NEUTRAL AND EARTH TONES THAT SHOWCASE THE STYLISH AND SAGACIOUS NATURE OF RIBBED WOOD.

PROVIDING COUNTLESS STORAGE OPTIONS, **DEVON KITCHEN** IS FILLED WITH HIDDEN TREASURES, FROM SPECIFIC DRAWERS WITH COMPARTMENTS TO KEEP SPICES AND CUTLERY TO THE SOFT PLAY OF LIGHT AND SHADOW CARRIED OUT BY INTERIOR AND EXTERIOR LED LIGHTS. THE WHOLE AMBIANCE EXPLORES THE FUNCTIONALITY OF MINIMALIST CONCEPTS WHILE PORTRAYING THE NOTION OF INDEPENDENCE AND AT-HOMENESS. TO MAKE IT EVEN BETTER, DEVON COLLECTION HAS BEEN GRACED WITH A COMPELLING AND INVITING **WINE CELLAR**. COMPLETELY CUSTOM-MADE, IT RELIES ON SPACE UTILIZATION IN ORDER TO PROVIDE YOU WITH A COMPACT CABINET THAT OFFERS PLENTIFUL STORAGE OPTION FOR BOTTLED WINE AND GLASSWARE. ENDOWED WITH SMART LED LIGHTING, THIS PIECE HIGHLIGHTS THE BEAUTY OF EACH ILLUMINATED BOTTLE SHELF AND DISPLAYS A DELICATE GLASS RACK, RIGHT AT ITS CORE. THE DRAWERS HAVE BEEN UTTERLY CUSTOMIZED IN ORDER TO PERFECTLY ACCOMMODATE BOTTLES AND WINE GLASSES.

**DEVON**  
**KITCHEN**  
 & WINE  
**CELLAR**

**FINISHES** GROOVE BROWN 2 / NUTMEG  
**GLASS** TEMPERED **HANDLE** B BLACK







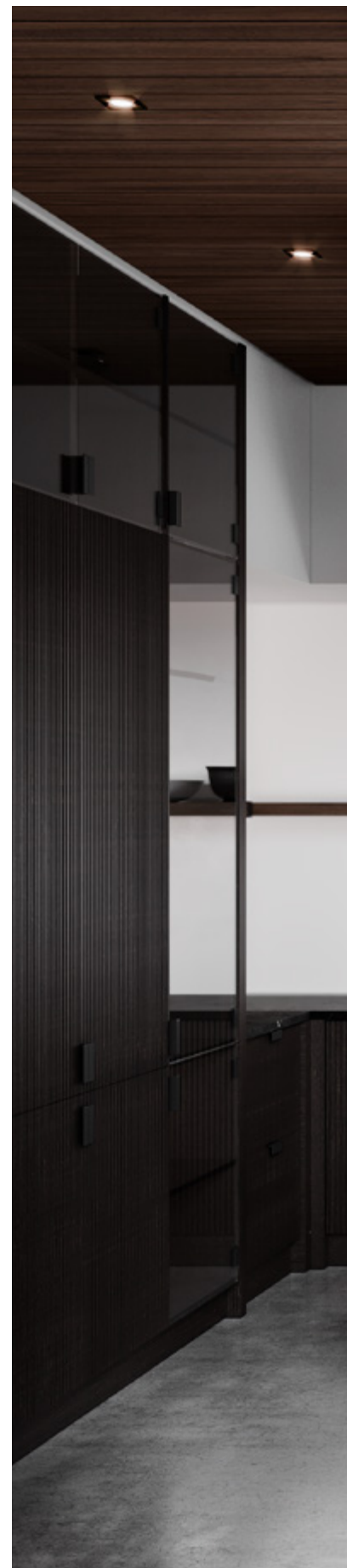




























WHILE EMBRACING ITS CLASSICAL NATURE, **DIRECTOIRE KITCHEN** EXPLORES THE BEAUTY AND PERSPECTIVE THAT COME WITH MODERN ARCHITECTURE. BROAD AND FAMILY-FRIENDLY, THIS SET CONJUGATES DIFFERENT COLORS, PATTERNS AND WOOD TYPES IN ORDER TO PORTRAY THE WARMTH OF CLASSIC DESIGNS IN A NEW, BOLD AND ECLECTIC MANNER. THE LIGHT AND TEXTURED OAK CABINETS GRACEFULLY BLENDS WITH THE CHERRY WOOD ISLAND IN A SOFT PEACH TONE, BRINGING ABOUT THE COLORFUL NUANCES OF THE REFINED MARBLE USED FOR THE COUNTERTOPS AND WALLS. ENDOWED WITH TWO SINKS AND A SMALL SEATING AREA, **DIRECTOIRE KITCHEN** NOT ONLY PROVIDES DIFFERENT AND USEFUL STORAGE OPTIONS, IT ALSO OFFERS THE COZINESS AND SWEETNESS OF A WELCOMING PLACE, BUILDING THE BRIDGE BETWEEN TRADITION AND MODERNITY. WRAPPED IN THE SAME CLASSIC ATMOSPHERE, **DIRECTOIRE WINE CELLAR** IS LUMINOUS AND REFINED, MIXING TEXTURED OAK WITH GOLDEN BRASS DETAILS. IDEAL FOR WINE COLLECTORS, THE BOTTLES ARE TRADITIONALLY DISPLAYED IN WOODEN RACKS, EVOKING A SENSE OF TRUE TIMELESSNESS. THE CENTRAL CABINETS ALLOW FOR DIFFERENT TYPES OF STORAGE AND SECURES YOUR MOST TREASURED RELICS, WHICH ARE KEPT BEHIND GLASS DOORS.

**FINISHES** COCONUT / NUDE ALPERCE  
**GLASS** GOLDEN MESH **HANDLE** F GOLDEN (S + M + L)

# DIRECTOIRE KITCHEN & WINE CELLAR























Chateau

Chateau

AREADY

METAL BLANC  
CHATEAU



*Clos Apalta*

A BOUTIQUE DE 75 CL

ARTADI

CHATEAU CHEVAL BLANC  
2016







# DIRECTOIRE KITCHEN

AMIDST BEIGE AND GREEN HUES, **DIRECTOIRE KITCHEN** IS AN INVITATION TO BRING NATURE INTO YOUR HOME. THE USE OF VERDE ANTIGUA MARBLE AND GREENERY IS ELEGANTLY AND INTRICATELY COMBINED WITH LIGHT GREEN AND WHITE FLOOR TILES, CONTRIBUTING TO THE CREATION OF A REFINED AND ELEVATED CLASSICAL SCENERY WITH A PROFOUND APPRECIATION FOR NATURAL SURROUNDINGS THAT EVOKE A RENEWED AND SOPHISTICATED FRENCH PROVINCIAL STYLE. THE KITCHEN ISLAND, IN A COMPELLING DARK GREEN TONE, KNITS THE AMBIANCE TOGETHER WHILE ESTABLISHING A WELL-BALANCED CONTRAST WITH THE SOFT BEIGE CABINETS. THE MIX OF CHERRY WOOD AND TEXTURED OAK RESULTS IN THE CREATION OF A UNIQUE CABINET THAT USES SPLASHES OF WHITE AND GOLD TO GENERATE A LUMINOUS EFFECT THROUGH RAY-SHAPED MARQUETRY. KEEPING ITS SIMPLICITY AND HIGHLIGHTED BY ITS GOLDEN PULLS, THE DOUBLE UPPER CABINETS ALLOW FOR PLENTIFUL STORAGE OPTIONS, TRANSLATING INTO A RESOURCEFUL FAMILY-FRIENDLY KITCHEN.

**FINISHES** MACADAMIA / GREY 2 LACQUER  
FOREST GREEN LACQUER /  
**HANDLES** D + E GOLDEN









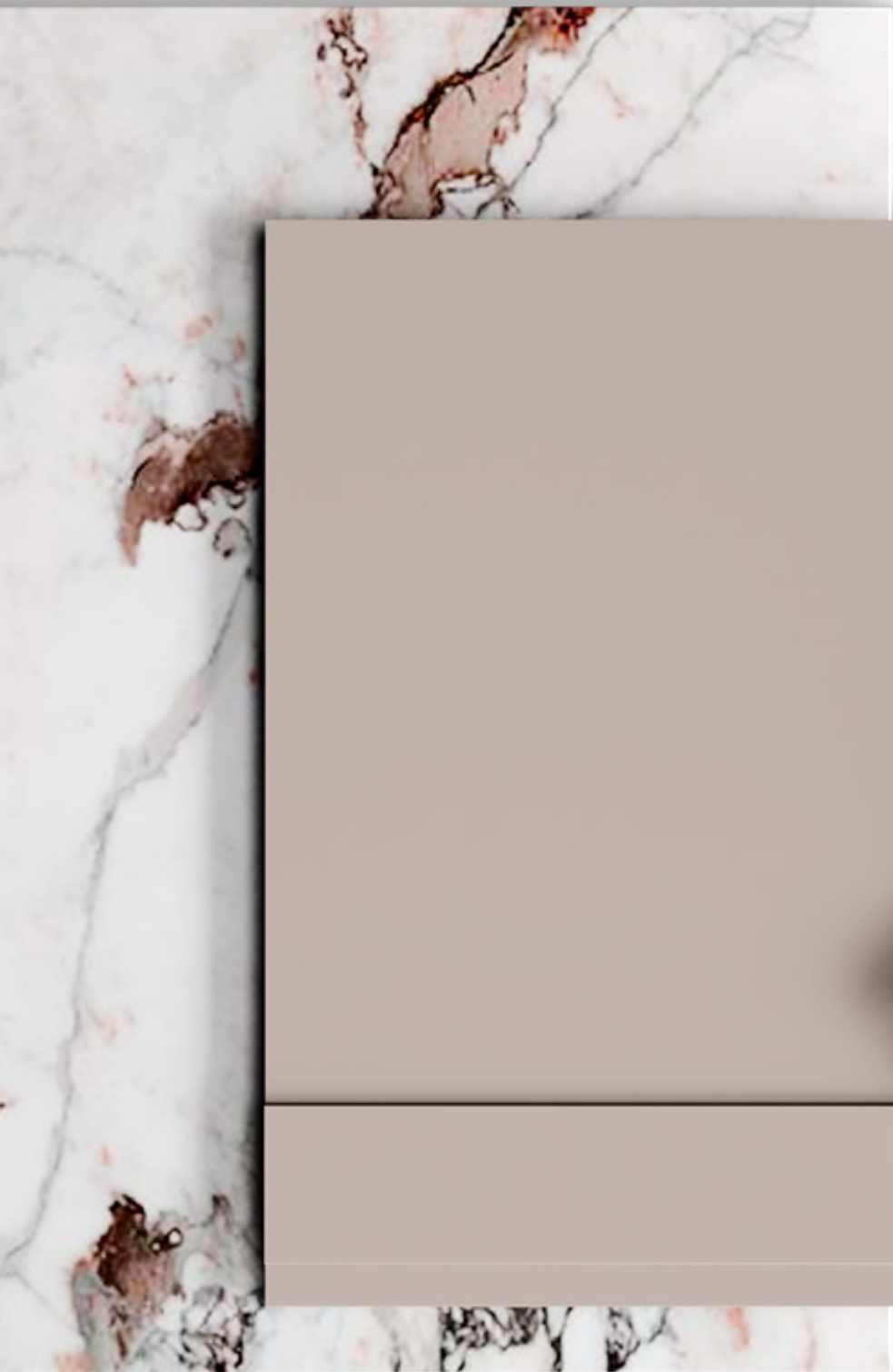














# ENEIDA KITCHEN



PRACTICAL AND HIGHLY COMPACT, **ENEIDA KITCHEN** CAPTURES THE ESSENCE AND PRAGMATISM OF CITY LIFE, CREATING A DAINY FUSION OF DARK ASH WOOD AND PALE LACQUERED TONES. PLAYING WITH INTRICATE SPLASHES OF ROSY AND GRAYISH HUES, THE ADDITION OF BRECCIA CAPRAIA MARBLE ALONG THE SINK AND CABINETS SHOWCASES THE COSMOPOLITAN NATURE OF THIS AMBIANCE. EXHIBITING A WHITE QUARTZ SILESTONE TOP, AN ISLAND WITH ALL THE ESSENTIALS IS PLACED RIGHT IN FRONT OF THE SINK, PROVIDING PLENTIFUL STORAGE OPTIONS DUE TO ITS SPACIOUS DRAWERS AND SHELVES. THE CONTRAST BETWEEN THE DARK WOOD AND THE SHIMMER THAT EMANATES FROM SMALL SPOTLIGHTS CREATES A VIBRANT YET SOBER ATMOSPHERE, EMPHASIZING WOOD'S QUALITY AND PROTAGONISM.

**FINISHES** GROOVE BROW 2 / GREY 1 LACQUER  
**GLASS** TEMPERED **HANDLE** F GOLDEN (S + M + L)



















## ENEIDA KITCHEN

GENTLE AND SWEET, **ENEIDA KITCHEN** COMBINES THE COLORFULNESS OF A SOFT PINK HUE WITH THE SOBRIETY OF A DARK WOOD TONE, WHILE PLAYING WITH TENDER SPLASHES OF GOLD. THE ESTABLISHED CONTRAST ACCOUNTS FOR THE CREATION OF A DELIGHTFUL KITCHEN SET WITH A POP OF COLOR THAT WILL BRIGHTEN UP YOUR DAYS AND ALLOW FOR A DREAMY ATMOSPHERE. DESPITE ITS PURE FORMS AND LINEAR CONTOURS, **ENEIDA KITCHEN** FINDS INSPIRATION IN CLASSIC DESIGNS, WHICH ARE REFLECTED IN THE USE OF TEXTURED OAK AND INTRICATE CEILING FRAMES. ADDING TO THE DAINTY NATURE OF THIS AMBIANCE, ESTREMOZ WHITE MARBLE BRINGS ABOUT THE DELICATENESS OF THE GOLDEN HUE USED FOR THE DOOR PULLS, EXTRACTOR FAN, DÉCOR AND FLOOR DETAILS. COMPACT, WELCOMING AND READY TO FULFILL ALL YOUR SUGAR CRAVINGS, ENEIDA KITCHEN WRAPS YOU IN A VALLEY OF COLOR, TENDERNESS AND DELICATE DESIGN.

**FINISHES** HAZELNUT / PINK SAND  
**HANDLE** H GOLDEN

















# QUINCY KITCHEN

FRESH AND COZY, **QUINCY KITCHEN** GATHERS THE LIVELINESS OF A SOFT BLUE LACQUER AND THE VIBRANT NATURE OF A TEXTURED OAK TONE. ITS COASTAL INSPIRATION TRANSLATES INTO A SOOTHING SUNSHINY AND LAID-BACK VIBE THAT IS INVITING AND WELCOMING.

THE USE OF A CLEAN-CUT DESIGN WITH STRAIGHT LINES AND THE PREDOMINANCE OF SHADES OF BLUE AND GRAY ADD TO THE YOUTHFUL NATURE OF THIS AMBIANCE. FIOR DI PESCO MARBLE COMPLEMENTS THE CABINETRY AND FLOOR TILES WHILE BLACK IRON RECTANGULAR PULLS CONTRAST BEAUTIFULLY WITH BOTH FINISHES, TYING EVERY DETAIL TOGETHER.

EXTREMELY PRACTICAL AND FUNCTIONAL, **QUINCY KITCHEN** IS EQUIPPED WITH INTERIOR DISH RACKS AND PLENTIFUL COMPARTMENTS THAT ALLOW FOR A CLEVER AND EFFICIENT USE OF EVERY STORAGE OPTION. WITH A FONDNESS FOR OCEANIC COLORS AND NATURAL DÉCOR, THIS SET IS A COMPACT AND QUINTESSENTIAL KITCHEN REFUGE.

**FINISHES** CASHEW / POWDER BLUE LACQUER  
**HANDLE** A BLACK



















# QUINCY KITCHEN & WINE CELLAR



MIXING THE NOBILITY OF WALNUT WOOD WITH THE BRIGHTNESS AND ELEGANCE OF A SOFT BEIGE TONE, **QUINCY KITCHEN** USES GOLDEN DETAILS AS AN EXPRESSION OF SOPHISTICATED AND UPSCALE DESIGN.

FULLY EQUIPPED, THIS MODULAR KITCHEN PROVIDES A WINE RACK DELICATELY INTEGRATED IN A TALL CABINET, EMBELLISHED WITH GLASS DOORS AND BRASS PULLS. EACH AND EVERY CABINET ALLOWS FOR STORAGE WHILE SHOWCASING A CLEVER AND GRACEFUL USE OF BRASS OVERLAYS.

LUMINOUS AND WITH A TOUCH OF GREENERY, **QUINCY KITCHEN** DISPLAYS A MARBLE ISLAND RIGHT AT ITS HEART, EMPHASIZING THE SOFT BLEND OF NEUTRAL TONES WITH A DISTINCT WALNUT TOP THAT IS COMPLEMENTED BY A SMALL AND CHARMING SEATING AREA.

RICHLY PRESENTED, **QUINCY WINE CELLAR** DISPLAYS A LUSH AND ENTICING CHARACTER. IT IS NOT JUST THE PLACE WHERE YOU STORE WINE AND GLASSWARE, IT IS A ROOM TO BE EXPERIENCED AND SHARED WITH THE ONES YOU CHERISH. ABSOLUTELY CUSTOMIZABLE, THE BUILT-IN CABINETS OFFER ALL KINDS OF STORAGE AND UTILITIES – A FULLY EQUIPPED SINK IS AT YOUR DISPOSAL. TO ADD SOME EXTRA CHARM AND COMFORT, IT CAN BE COMPLEMENTED BY A FORWARD-LOOKING COFFEE TABLE OR A REFINED ARMCHAIR.

**FINISHES** NUTMEG / TAUPE LACQUER  
**GLASS** TEMPERED **HANDLE** A GOLDEN





























# TAILOR MADE

/ WARDROBE & BATH /





MIXING SOFT BEIGE AND DARK BROWN HUES, **AMARI WARDROBE** GATHERS THE SIMPLICITY OF A CLEAN-CUT DESIGN AND THE HARMONY OF SYMMETRIC LINES. CONTRASTING LIGHT AND DARK TEXTURED OAK, IT IS EMBELLISHED WITH GENTLE GOLDEN BRASS HANDLES AND MESHED GLASS DOORS THAT ADD LIGHT AND BRIGHTNESS TO THE ENVIRONMENT.

THIS WALK-IN CLOSET OFFERS TOTAL CUSTOMIZATION, UTILIZING SPACE AND CREATING AN AMBIANCE THAT IS ABSOLUTELY TAILOR-MADE. THE ADAPTABILITY OF A BUILT-IN WARDROBE IS UNDENIABLE, ESPECIALLY WHEN COMBINED WITH THE POSSIBILITY OF ADJUSTING ITS INTERIOR AREAS ACCORDING TO YOUR NEEDS AND TASTE.

**AMARI WARDROBE** OFFERS PLENTIFUL STORAGE OPTIONS WITH SHELVING UNITS, HANDY DRAWERS AND SMART LIGHTING, COMBINING FUNCTIONALITY AND HIGH-END DESIGN.

EQUALLY ELEGANT AND PRAGMATIC, **AMARI VANITY UNIT** ELEVATES THE AMBIANCE OF ANY BATHROOM WITH ITS DELIGHTFUL NATURAL SOLID OAK TONE. SUPPORTED BY A WOODEN BASE, THIS UNIT IS ENDOWED WITH FIVE DRAWERS, TWO DOORS AND AN OPEN SHELF. ITS MAIN ATTRACTION - THE ARABESCATO MARBLE SINK - BLENDS BEAUTIFULLY WITH THE BOTTOM STRUCTURE, WHILE CONTRASTING WITH THE DISTINCT GOLDEN BRASS HANDLES AND SINK FAUCET.

**AMARI**  
WARDROBE  
& BATH

**FINISHES** HAZELNUT / PECAN  
**GLASS** GOLDEN MESH **HANDLE** C GOLDEN

























# BLOSSOM WARDROBE & BATH

WITH A FLAIR FOR PALE TONES AND THE CREATION OF BALANCED AMBIANCES, **BLOSSOM WARDROBE** COMBINES TWO RICH AND SOPHISTICATED BEIGE AND PEARL WOOD VENEERS WITH A SOFT PALE LACQUER FINISH THAT ADDS TO ITS DELICATE AND PEACEFUL ATMOSPHERE.

THIS ITEM DRAWS INSTANT ATTENTION TO THE FLORAL MOTIFS THAT ADORN SOME OF ITS DOORS, RESEMBLING JAPANESE CHERRY BLOSSOMS – COMPLETELY HANDMADE, THESE PATTERNS ARE A TOKEN OF SPLENDID ARTISANSHIP AND TASTEFUL DESIGN.

WITH MULTIPLE SHELVES AND DOORS FOR ENDLESS STORAGE OPTIONS, **BLOSSOM WARDROBE** ENCOMPASSES AN INTEGRATED SPACE WITH A CENTRAL SHOWCASE ENDOWED WITH A GARMENT RACK, AND A BEAUTIFUL ISLAND, INCORPORATING A VERY CONVENIENT TEN-DRAWER SET WITH A CALACATTA ORO MARBLE TOP. THIS, ALLIED TO DELICATE GOLDEN INLAYS, SMART LIGHTING FEATURES, RIBBED WOOD CEILING FRAMES AND A CUSTOMIZABLE SHOE RACK, PROVIDES AN ELEVATED AND UPLIFTING ENVIRONMENT THAT COMPRISES NOT ONLY A DAINTY WALK-IN CLOSET, BUT ALSO AN UNQUESTIONABLY SOPHISTICATED BATHROOM VANITY UNIT, OFFERING GREAT ADAPTABILITY.

**FINISHES** STRIPE SAND / STRIPE PEARL / GREY 2 LACQUER  
**GLASS** TEMPERED **HANDLE** | GOLDEN























# CARTER WARDROBE & BATH

IMMERSED IN A CALMING AND BRIGHT ATMOSPHERE, **CARTER WARDROBE** PRESENTS A POWERFUL DYNAMIC, MIXING DARK BROWN ASH WOOD (INTERIOR) WITH BEIGE TEXTURED OAK (EXTERIOR). THE CONTRAST RESULTS IN A HARMONIOUS BALANCE OF GENTLE TONES, EMBELLISHED BY INTEGRATED SMART LIGHTING FEATURES.

AMONGST STRAIGHT LINES AND RECTANGULAR FRAMES, ONE CAN FIND COUNTLESS SHELVES, COVERED BY GLASS DOORS THAT ALLOW FOR EXTRA BRIGHTNESS AND CLARITY, CONTRIBUTING TO AN EASIER UTILIZATION OF SPACE. SMALL GOLDEN DETAILS ARE PRESENT THROUGHOUT THE AMBIANCE, ADDING A SENSE OF LUMINOSITY AND GRANDEUR TO THE ENVIRONMENT.

DUE TO ITS ADAPTABILITY AND HIGH FUNCTIONALITY, **CARTER WARDROBE** COMES WITH A CUSTOMIZABLE ISLAND, ENDOWED WITH SETS OF DRAWERS ON BOTH SIDES, ALLOWING FOR EXTRA STORAGE, AND TOP DRAWERS WITH THOUGHTFUL COMPARTMENTS TO KEEP ACCESSORIES ALWAYS AT HAND.

COMPLETE THIS SERENE AND DELUXE ENVIRONMENT WITH THE MATCHING **CARTER BATHROOM VANITY UNIT**: EQUAL PARTS PRAGMATIC AND AESTHETICALLY PLEASING, IT IS A BUILT-IN PIECE ENDOWED WITH AN EMPEROR GREY MARBLE TOP AND WALLS, ADORNED BY STRIKINGLY TASTEFUL GOLDEN DETAILS AND DELICATE FAUCETS.

**FINISHES** PECAN / GROOVE BROWN 2  
**GLASS** TEMPERED **HANDLE** G GOLDEN (S + M)







How Do You Know  
TED YON YEN INTERIOR ARCHITECTURE  
WAREHOUSE HOME













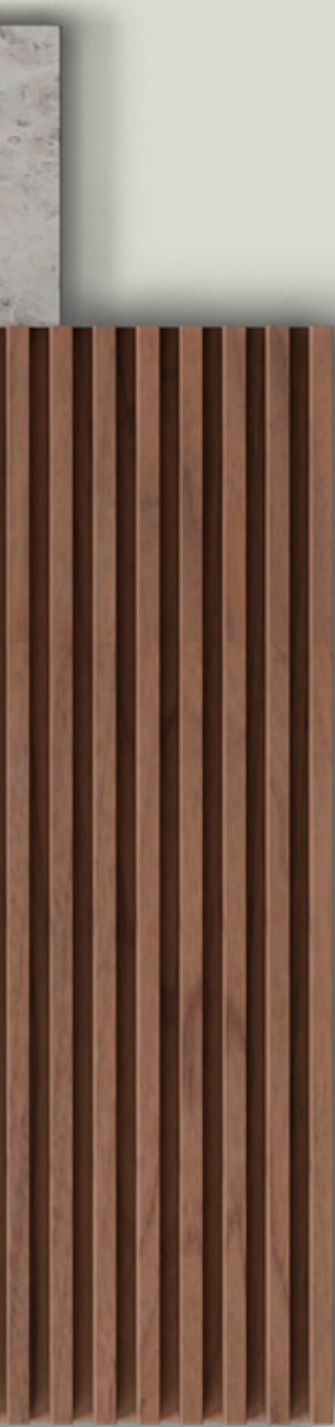








# DEVON WARDROBE & BATH



IN DARK BROWN AND BLACK TONES, **DEVON WARDROBE** CREATES A YOUTHFUL AND FRESH AMBIANCE, ENCOMPASSING A MODERN DESIGN THAT EXUDES ELEGANCE. CRAFTED IN WALNUT, THE SLIDING DOORS PRESENT AN APPEALING RIBBED WOOD STRUCTURE THAT CONTRAST BEAUTIFULLY WITH THE REMAINING GLASS DOORS, WITH A BLACK OUTLINING FRAME. A SOBER COLOR SCHEME COMBINED WITH SMART LED LIGHTING HIGHLIGHTS THE PROMINENCE OF BLACK DETAILS THAT CAN BE FOUND ON EACH DOOR HANDLE, FRAME AND COAT RACK.

THIS ELEGANT AND STYLISH WALK-IN CLOSET FUNCTIONS AS A TOTALLY CUSTOMIZABLE BUILT-IN WARDROBE, A PRODUCT OF PRACTICALITY AND CONTEMPORARY DESIGN. IT OFFERS EXCELLENT STORAGE OPTIONS THROUGH CONVENIENT SHELVES, COAT HANGERS AND UNIQUE ACCESSORY DRAWERS WITH MULTIPLE COMPARTMENTS. IN A CONTINUOUS DISPLAY OF LIGHT AND CONTRAST, AS AN EXTENSION OF THE WARDROBE, **DEVON BATHROOM VANITY UNIT** DISPLAYS THE SAME LEVEL OF PRACTICALITY, PRESENTING MANIFOLD DRAWERS, DOORS AND AN OPEN SHELF. TO ADD A TOUCH OF REFINEMENT AND DISTINCTIVE APPEAL, TUNDRA GREY MARBLE COVERS THE SINK COUNTERTOP AND WALLS CREATING A SOFT AND WARM UNDERTONE.

**FINISHES** NUTMEG  
**GLASS** TEMPERED **HANDLE** B BLACK

























# DIRECTOIRE WARDROBE & BATH

IN A PALE ROSE HUE, **DIRECTOIRE WARDROBE** EVOKES A ROYAL ELEGANCE AND DELICATE STILLNESS, ATTAINED BY PERFECT SYMMETRY AND UNDENIABLE CLASSICAL INSPIRATION.

MADE FROM SOLID CHERRY WOOD, THIS CUSTOMIZABLE WALK-IN CLOSET COMPRISES A SPACIOUS AND ELEGANT DOUBLE BUILT-IN WARDROBE AS WELL AS A MATCHING ISLAND. THE WARDROBE DISPLAYS MOSTLY WOODEN DOORS, MARKED BY RECTANGULAR FRAMES, AND CENTRAL DOORS THAT INCORPORATE GLASS IN ORDER TO HIGHLIGHT ITS INTEGRATED SHOE RACK AND SHELVES. TO PERFECT THIS SOPHISTICATED STORAGE UNIT, DIRECTOIRE WARDROBE IS ENDOWED WITH SMART LED LIGHTING AND SPLENDID GOLDEN BRASS HANDLES. THE CENTRAL ISLAND DEPICTS MANIFOLD DRAWERS WITH LONG BRASS HANDLES, IN THE SAME LIGHT PINK HUE. THE TOP IS COMPOSED BY A TWO-PART GLASS COVERING THAT ANTICIPATES PLENTIFUL COMPARTMENTS FOR STORING JEWELRY AND ACCESSORIES.

**DIRECTOIRE BATHROOM CABINET** INCORPORATES THE SAME RECTANGULAR FRAMES THAT EXTEND THEMSELVES UP UNTIL THE CEILING, WHERE THEY BLEND WITH THE ARCHITECTURAL FEATURES OF THE SPACE. IN A PLAYFUL AND SYMMETRIC CABINETSRY WORK, THIS BUILT-IN PIECE DISPLAYS A CLASSICAL SET OF GLASS SHELVES WITH INTERIOR LIGHTING, INNUMEROUS DRAWERS AND DOORS FOR STORAGE AND A CALACATTA MARBLE TOP WITH TWO SINKS. THE ADDITION OF DELICATE SPLASHES OF GOLD THROUGH THE USE OF BRASS HANDLES, MIRROR FRAMES AND FAUCETS STRENGTHENS THE CLASSIC CHARISMA OF THE WHOLE ENVIRONMENT.

**FINISHES** TAUPE LACQUER

**GLASS** TEMPERED **HANDLE** F GOLDEN (S + M + L)



























# ENEIDA WARDROBE & BATH

WITH A CLASSICAL APPROACH TO DÉCOR AND DESIGN, **ENEIDA WARDROBE** CAPTURES THE ESSENCE OF PRAGMATISM AND FUNCTIONALITY. HIGHLY ADAPTABLE AND CUSTOMIZABLE, IT FITS THE TINIEST CORNER, UTILIZING SPACE AND FOSTERING HARMONY. SYMMETRIC LINES AND GEOMETRIC FRAMES CHARACTERIZE THE ENVIRONMENT, EVOKING A SERENE AND DELICATE ATMOSPHERE, IN A SOFT TAUPE HUE.

TO MAXIMIZE ORGANIZATION, SOME OF THE CLOSET SPACE IS COMPOSED BY BUILT-IN WARDROBES WITH GLASS DOORS AND OPEN SHELVES THAT LET YOU PICK YOUR OUTFIT INSTANTLY. ENDOWED WITH SMART LED LIGHTING AND A CONVENIENT COAT RACK, ENEIDA'S CLASSICAL NATURE IS PRESERVED AND ENRICHED BY PRACTICALITY. OFFERING PLENTY OF STORAGE OPTIONS, A FULL WALL-LENGTH BUILT-IN CLOSET WITH SIX WOODEN DOORS, AN INTEGRATED DRAWER UNIT AND A RECTANGULAR MIRROR ARE AT YOUR DISPOSAL. THE WHOLE AMBIANCE IS ENHANCED WITH SUBTLE TOUCHES OF GOLD AND INTRICATE CEILING FRAMES THAT COMPLEMENT THE ELEGANT FEEL OF THE ROOM.

WITH THE SAME ELEGANCE AND SOPHISTICATION, **ENEIDA BATHROOM CABINET** PLAYS BEAUTIFULLY WITH THE RICHNESS OF OAK WOOD, THE VIVACITY OF ITS ARCTIC GREY MARBLE TOP AND THE LUSHNESS OF EVERY GOLDEN DETAIL AND DOUBLE SINK. FILLED WITH RICH WOODEN FRAMES, THIS FULL-LENGTH BUILT-IN CABINET PROVIDES COUNTLESS STORAGE OPTIONS, DUE TO ITS MANIFOLD DRAWERS, DIFFERENT SIZED DOORS AND TOWEL ORGANIZERS.

**FINISHES** CASHEW / TAUPE LACQUER  
**GLASS** TEMPERED **HANDLE** H GOLDEN



























# QUINCY WARDROBE & BATH

CRAFTED IN OAK WOOD, **QUINCY WARDROBE** PLAYS WITH SOBER BROWN AND GREYISH TONES, AMIDST THE WARMTH OF ITS GOLDEN BRASS INLAYS. A SOPHISTICATED CONTEMPORARY AMBIANCE EMERGES FROM ITS CLEAN-CUT DESIGN WITH PREDOMINANT STRAIGHT LINES AND CHARISMATIC FRAMES OUTLINED BY GOLDEN BRASS.

IN ORDER TO UTILIZE EVERY CORNER, **QUINCY WARDROBE** IS HIGHLY ADAPTABLE AND CUSTOMIZABLE – THE BUILT-IN CLOSET ENHANCES THE SPACE, MAKING IT MORE AMPLE AND COMMODIOUS. WITH FULL-LENGTH WOODEN DOORS IN DIFFERENT SHADES OF BROWN AND GREY, AND ENDOWED WITH OPEN SHELVES AND DISTINCT DRAWER UNITS, YOUR CLOTHING ITEMS AND ACCESSORIES WILL BE WELL ORGANIZED AND SAFELY KEPT. QUINCY'S FONDNESS FOR NATURAL WOOD, ITS VEINS AND TEXTURES CREATES A SOBER YET UPLIFTING ENVIRONMENT WITH A FLAIR FOR TRUE REFINEMENT.

**QUINCY BATHROOM VANITY UNIT** CAPTURES THE SAME SOPHISTICATED FEEL, COMBINING A SOFT BEIGE LACQUER WITH NATURAL OAK WOOD TONES. ADDING TO THE RICHNESS OF THIS ENVIRONMENT, TRAVERTINO, WHITE ONIX AND TUNDRA GREY MARBLE COME TOGETHER IN A POWERFUL YET DELICATE COLOR CONTRAST. THIS PIECE COMPRISES A DOUBLE SINK WITH A TRAVERTINO MARBLE TOP, A CABINET UNIT WITH A LONG OPEN SHELF AND A SEATING AREA FOR MAKE-UP AND HAIR CARE.

**FINISHES** HAZELNUT / GROOVE BROW 2 / GREY 2 LACQUER  
**HANDLE** A GOLDEN































# CUSTOM MADE BATH

AN INTERIOR DESIGN PROJECT COMES WITH UNIQUE AND DEMANDING EXPECTATIONS. OUR JOB IS TO MAKE IT COME TO LIFE, ASSURING THAT YOUR VISION AND DESIGN ARE METICULOUSLY REFLECTED IN THE FINAL RESULT. GATHERING THE BEST ARTISANAL TECHNIQUES AND HIGH-QUALITY MATERIALS, WE PRESENT TO YOU A SELECTION OF TAILOR-MADE PIECES DESIGNED EXCLUSIVELY FOR YOUR BATHROOM PROJECT – A BESPOKE VANITY UNIT THAT IS, IN FACT, AN ACCENT PIECE FOR A REFINED BATHROOM.





SURROUNDED BY WOODEN PANELING WITH RECTANGULAR FRAMES,

**ADONIS VANITY UNIT** IS AN INVITING AND WELCOMING PIECE FOR AN UPSCALE BATHROOM ENTRANCE. ITS CLASSICAL FIGURE MIXES BOTH STRAIGHT AND CONTOURED LINES, WHICH ADDS TO THE INTRICACY OF ITS DELICATE YET STRONG DESIGN.

ITS ROUND SHAPE ALLOWS FOR EXTRA ADAPTABILITY AND ITS FEATURES ARE COMPLETELY CUSTOMIZABLE. WITH TWO ROUND DOORS AND THREE LONG DRAWERS, IT PROVIDES CONVENIENT STORAGE OPTIONS. BOTH THE DÉCOR AND THE DISTINCT GOLDEN HANDLES ARE AN ALLUSION TO NATURE AND ITS LIGHT AND UPLIFTING PRESENCE. PUTTING TOGETHER DIVERSIFIED AND REFINED MATERIALS, A ROUND AND WHITE ESTREMOZ MARBLE TOP WAS THE CHOICE FOR THIS PIECE, ESTABLISHING AN OBVIOUS CONTRAST WITH ITS WOODEN LIGHT GREY BOTTOM STRUCTURE.

WITH STRAIGHT COLUMN-LIKE FEET, **ADONIS VANITY UNIT** TRANSPORTS US TO THE GREAT ARCHITECTONIC TREASURES OF ANCIENT GREECE, BRINGING ABOUT THE STRENGTH OF ITS CONSTRUCTION AND THE BEAUTY OF ITS DELICATE AND GRACEFUL CHARACTER. THIS DAININESS, ALLIED TO GOLDEN FAUCETS, ACCESSORIES AND A COMPLEMENTARY ROUND MIRROR, EMPHASIZES THE LIGHTNESS AND REFINEMENT OF ELEVATED AMBIANCES.

**FINISH** COCO LACQUER





WITH AN UNDENIABLE CLASSICAL FIGURE, **REESE BATHROOM VANITY UNIT** SITS WELL WITH GREENERY AND NATURAL ELEMENTS.

ITS SIMPLICITY IS BOTH APPEALING AND ELEVATING: ITS STRONG CLASSICAL HERITAGE IS NOT DEFIED BY ITS STRAIGHT LINES, BUT RATHER EMPHASIZED BY ITS ELEGANT FIGURE. THE LIGHT SAGE GREEN WALL FRAMES ARE BEAUTIFULLY COMPLEMENTED

BY AN ILLUSTRATED WALLPAPER IN THE SAME CALMING TONE, PORTRAYING EXQUISITE FLORAL MOTIFS AND COLORFUL BIRDS.

IN A GREYISH SHADE OF WHITE, **REESE VANITY UNIT** TAKES IN THE BEAUTY OF ITS SURROUNDINGS, EXUDING SERENITY AND CHANNELING THE MAGNIFICENT CALM OF THE OUTER WORLD. WITH A CALACATTA MARBLE TOP, ITS PRESENCE GROWS STRONGER, ACQUIRING AN ENHANCED SOPHISTICATION, PARTLY DUE TO THE SPLASHES OF GOLD THAT CAN BE FOUND THROUGHOUT THE AMBIANCE: THE MARBLE SINK, FAUCETS, ACCESSORIES, MIRROR FRAME, LAMP STRUCTURES AND HARDWARE ARE ALL MADE OF DELICATE GOLDEN BRASS. KNOWING THAT EVERY DETAIL COUNTS AND EVERY NEED MATTERS, THIS PIECE IS AVAILABLE FOR CUSTOMIZATION AND FIT FOR ANY REFINED BATHROOM.

**FINISH** COCO LACQUER

AMIDST DELICATE ROSY TONES, **AVERY BATHROOM VANITY UNIT** EMERGES AS THE CENTRAL PIECE OF A WARM AND WELCOMING FLOWERY BATHROOM ENTRANCE.

LIKE A PROMINENT TREE IN A GENTLE GARDEN, THIS PIECE EXUDES LIFE, DELICATENESS AND CLASS. ITS CONTOURED SHAPE IS AKIN TO REGAL CLASSICAL DESIGNS, HIGHLIGHTING ITS CURVED SILHOUETTE, MARKED BY SABER FEET AND A CENTRAL LEDGE THAT EMPHASIZES ITS INTRICATE WOODWORK.

IN THIS FLOURISHING AMBIANCE, THE USE OF DIVERSIFIED MATERIALS CONTRIBUTES TO THE CREATION OF AN ENRICHING AND INSPIRING PIECE: WHITE ESTREMOZ MARBLE COMBINES BEAUTIFULLY WITH THE CHERRY WOOD BOTTOM STRUCTURE OF THIS ITEM, WHICH IS ADORNED BY SMALL ROUND BRASS PULLS, IN AN AGED GOLDEN TONE THAT CAPTURES THE INTRICACY AND FEMININITY OF THE WHOLE SET. THE USE OF RETRO GOLDEN FAUCETS ADDS TO THE HARMONIOUS CLASSIC FEEL OF THE ENVIRONMENT, REMINISCENT OF THE BEAUTY OF AN ITALIAN COUNTRYSIDE VILLA.

**FINISH** GREY 1 LACQUER





AS A CALMING FORCE AMONGST THE TEMPEST OF CITY LIFE, **LOGAN VANITY UNIT** IS A CLASSY CLEAN-CUT ADDITION TO A TRADITIONAL BATHROOM ENTRANCE WITH A RETRO APPEAL. AMIDST BLACK, WHITE AND GREY TONES, THIS AMBIANCE CAPTURES A ROARING 20S FEEL, WITH A PROMINENT CONTRAST OF LIGHT AND DARK NEUTRAL TONES. SURROUNDED BY WHITE WALL PANELING AND FRAMES, **LOGAN BATHROOM VANITY** UNIT PRESENTS A CHERRY WOOD STRUCTURE IN A GREY FINISH, WITH STRAIGHT FEET AND A RECTANGULAR SHAPE. MARKED BY THE FONDNESS FOR GEOMETRIC FORMS, IT IS ENDOWED WITH VARIOUS DRAWERS AND TWO CENTRAL DOORS, ADORNED BY SMALL ROUND BRASS PULLS THAT ADD TO THE STYLISH CINEMATIC SCENARIO OF THIS AMBIANCE. CREATING A MORE INTENSE CONTRAST, THIS PIECE EXHIBITS A WHITE CARRARA MARBLE TOP WITH SPLASHES OF GREY THAT TRULY COMPLEMENT THE SELECTED FINISH FOR THE BOTTOM STRUCTURE. THE SINK DÉCOR BETS ON CLASSIC ITEMS WITH A VINTAGE APPEAL AND AN AGED GOLDEN TONE, FROM THE SOAP DISPENSER TO THE WALL-MOUNT FAUCET. THE CONTOURED WALL MIRROR WITH AGED GOLDEN FRAMES EVOKES A TRUE CLASSICISM, PAIRING UP WITH TWO CANDLE-LIKE LAMPS THAT STAND OUT IN THE STORMY WALLPAPER BACKGROUND. FORTUNATELY, AFTER THE STORM COMES LOGAN BATHROOM VANITY UNIT: A SPACE-EFFICIENT, FULLY CUSTOMIZABLE PIECE FOR AN EVER-CLASSY BATHROOM ENTRANCE.

**FINISH** KOALA GREY LACQUER



# / DRAWERS DOORS



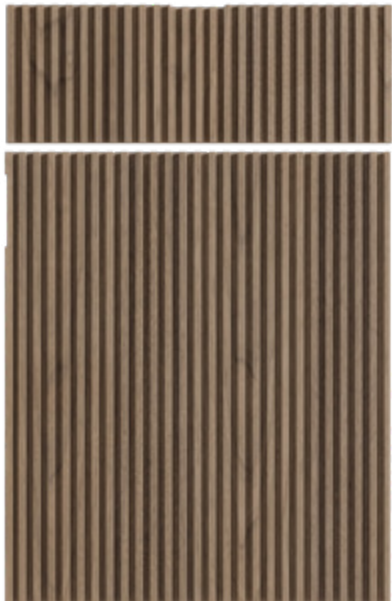
AMARI



BLOSSOM



CARTER



DEVON



DIRECTOIRE



ENEIDA



QUINCY

# / DRAWERS ORGANIZERS



**WARDROBES** | JEWELRY AND OTHER ACCESSORIES



**WARDROBES** | JEWELRY AND OTHER ACCESSORIES



**WARDROBES** | JEWELRY AND OTHER ACCESSORIES





**KITCHENS |** SPICE RACK



**KITCHENS |** CUTLERY TRAY WITH LED LIGHTS



**KITCHENS |** CUTLERY TRAY



**KITCHENS |** DISH RACK



**KITCHENS |** CUP PARTITION

# / HANDLES

AND EXTERIOR METAL DETAILS AVAILABLE IN

- BRONZE
- GOLDEN
- SILVER
- BLACK



**HANDLE A**  
80 X 20 X 20

PAGES 84 / 92 / 102 / 110 / 196



**HANDLE B**

100 X 30 X 42  
PAGES 48 / 160



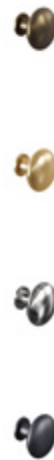
**HANDLE C**

130 X 14 X 17  
PAGES 8 / 24 / 92 / 126



**HANDLE D**

90 X 37 X 23  
PAGE 76



**HANDLE E**

30 X 30 X 26  
PAGE 76



**HANDLE F**

S - 60 X 20 X 40  
M - 200 X 20 X 40  
L - 300 X 20 X 40

PAGES 62 / 68 / 86 / 172



**HANDLE G**

S - 75 X 25 X 34  
M - 155 X 25 X 34

PAGES 34 / 148



**HANDLE H**

140 X 24 X 40

PAGES 76 / 94 / 184



**HANDLE I**

430 X 280 X 150

PAGE 138

# / GLASS FINISHES



**GOLDEN MESH GLASS**  
PAGES 62 / 126

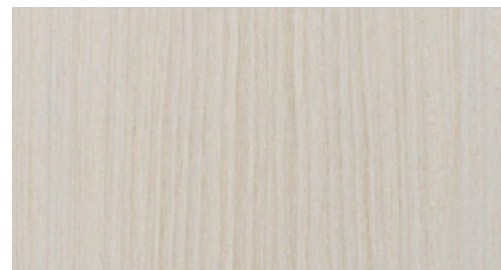


**RIPPLE TEXTURED GLASS**  
PAGES 8 / 34

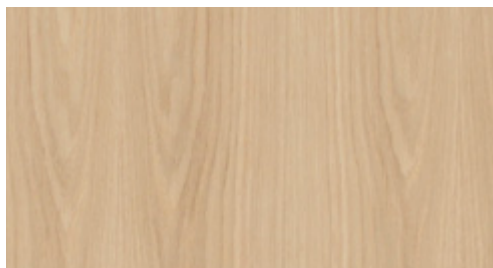
# / WOOD FINISHES



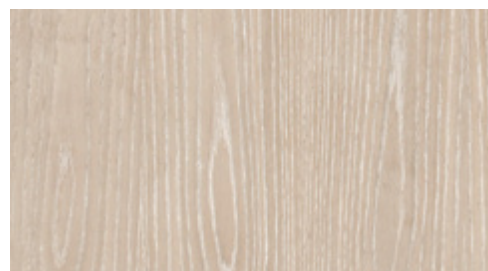
**STRIPE SAND (VENEER)**  
PAGE 138



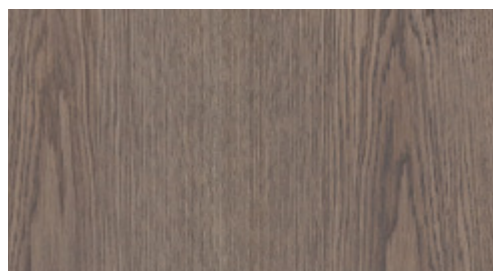
**STRIPE PEARL (VENEER)**  
PAGE 138



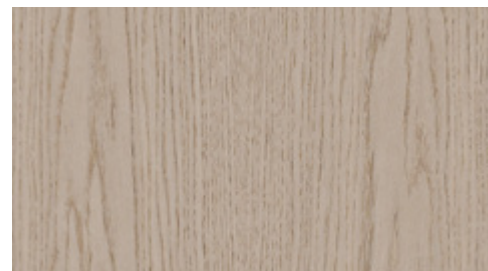
**CASHEW (OAK)**  
PAGES 84 / 102 / 184



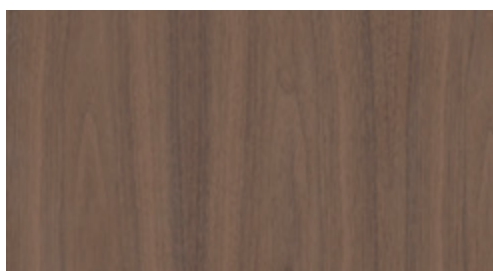
**COCONUT (OAK)**  
PAGE 62



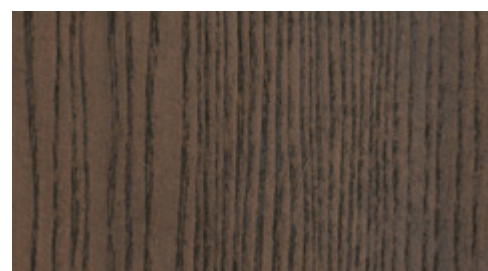
**HAZELNUT (OAK)**  
PAGES 8 / 76 / 94 / 126 / 196



**PECAN (OAK)**  
PAGES 8 / 24 / 34 / 126 / 148



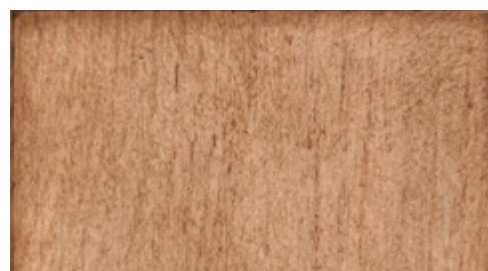
**NUTMEG (WALNUT)**  
PAGES 48 / 92 / 110 / 160



**GROOVE BROWN (ASH)**  
PAGES 48 / 68 / 76 / 148 / 196

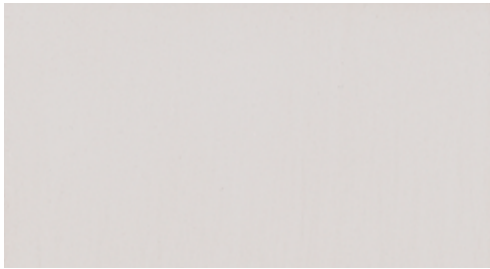


**CEREJEIRA NATURAL SIMPLES  
(CHERRY)**

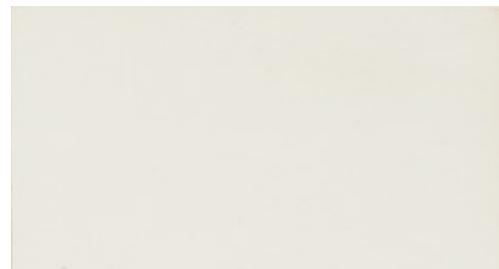


**CARVALHO NATURAL SIMPLES  
(OAK)**

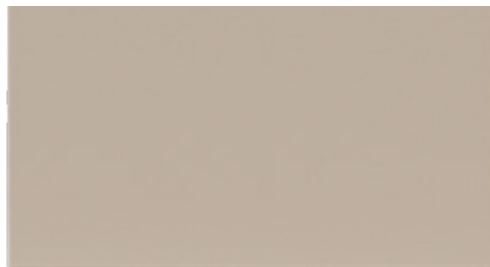
# / LACQUERED FINISHES



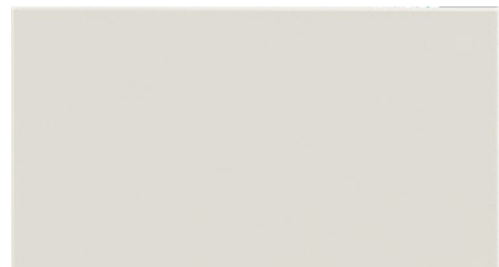
**COCO SIMPLES**  
PAGES 24 / 196 / 212 / 214



**ICE  
SIMPLES**



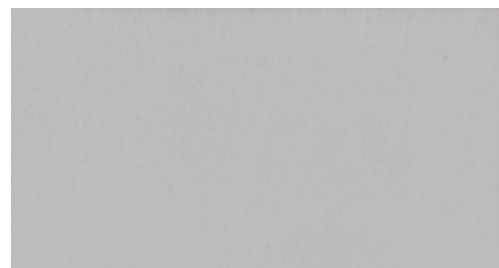
**GREY 1 SIMPLES**  
PAGES 68 / 76 / 216



**GREY 2 SIMPLES**  
PAGES 8 / 76 / 138 / 196



**TAUPE SIMPLES**  
PAGES 110 / 164 / 172 / 184



**GRIS  
SIMPLES**



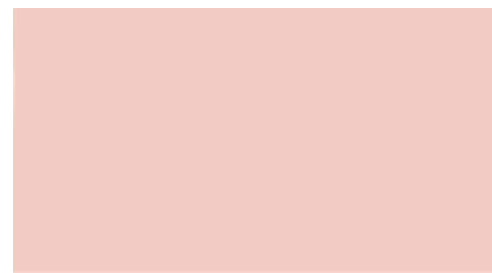
**TERRA  
SIMPLES**



**NUDE ALPERCE SIMPLES**  
PAGE 62



**POWDER BLUE SIMPLES**  
PAGE 102



**PINK SAND SIMPLES**  
PAGE 94



**FOREST GREEN SIMPLES**  
PAGE 76



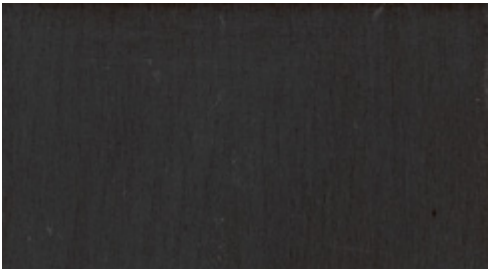
**KOALA GREY SIMPLES**  
PAGE 218



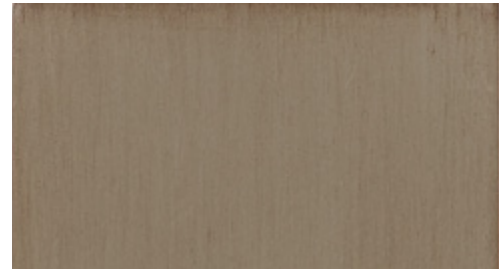
**BLACK  
SIMPLES**



**WHITE PATINE  
SIMPLES**



**ARDOISE  
SIMPLES**



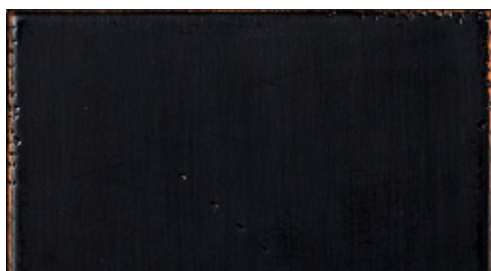
**COLDGREY  
SIMPLES**

**ALL LACQUERED COLORS CAN HAVE EITHER A SIMPLE FINISH OR AN ANTIQUE SPECIAL FINISH WITH A SOFT AGING EFFECT.  
ADDITIONALLY TO THE PRESENTED LACQUERED FINISHES, ANY COLOR FROM A RAL/NCS CHART IS AVAILABLE UPON QUOTE REQUEST.**

FINISHES' PHOTOS ARE MERELY INDICATIVE, TONALITY AND COLOR MAY VARY.  
ACCESSORIES AND DECOR ITEMS ARE NOT INCLUDED.



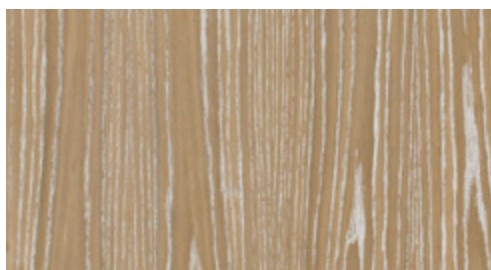
# / SPECIAL FINISHES



BLACK  
ANTIQUE



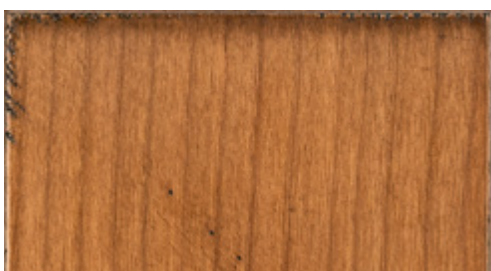
WHITE PATINE  
ANTIQUE



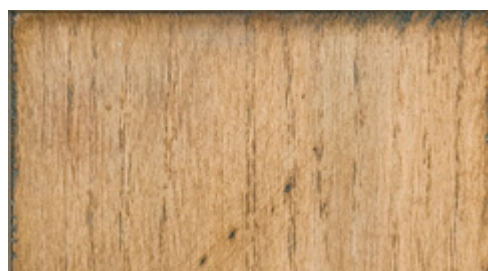
MACADAMIA (OAK)  
PAGE 76



COLDGREY  
ANTIQUE



AMBER ANTIQUE  
(CHERRY)



CARVALHO ANTIQUE  
(OAK)

Catalogs and price lists are subject to revisions and may suffer alterations, for that reason, make sure you are accessing the latest version by always using the link [www.amfurnituregroup.com/AM-Living-Tailor-Made-Catalog.pdf](http://www.amfurnituregroup.com/AM-Living-Tailor-Made-Catalog.pdf). Except for typo or misprint, the charged prices and the information provided will always correspond to the updated version of the online file. Product availability is subject to stock availability or production capacity. Last update: 01/02/2022.

**WWW.AMLIVING.COM**



Cofinanciado por:



UNIÃO EUROPEIA  
Fundo Europeu  
de Desenvolvimento Regional

[WWW.AMLIVING.COM](http://WWW.AMLIVING.COM)