

Продажа дизайнерской мебели,
света и аксессуаров
по всей России

8 (800) 500-70-36
hello@barcelonadesign.ru
www.barcelonadesign.ru



Indoor & outdoor stool.
Rotomoulded polyethylene seat and lacquered steel frame with stainless steel footrest.
Its structural design has become a contemporary classic

TECHNICAL INFO

Rotomoulded polyethylene seat in black or white.
Structure in steel lacquered in thermoset epoxy, stainless steel footrest.
Suitable for outdoor use.
Upholstered seat available.



FINISHES

Seat
Check upholstery samples
Polietileno



Structure



CERTIFICATES

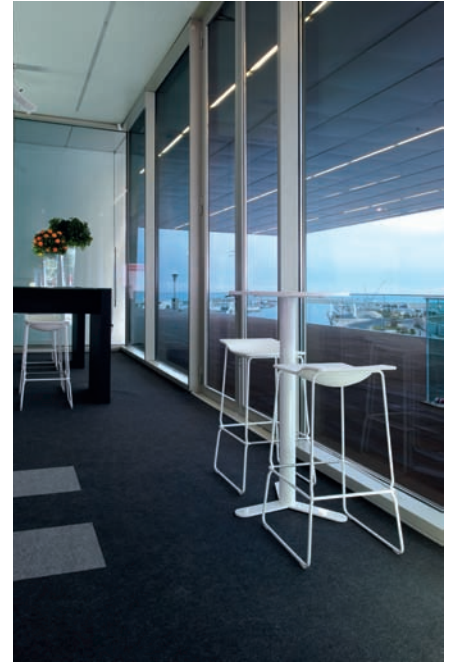
UNE 11010:5989
UNE 11020-2:92

UNE EN 1022:96
ANSI BIFMA X5.1.02



Продажа дизайнерской мебели,
света и аксессуаров
LAST MINUTE
по всей России

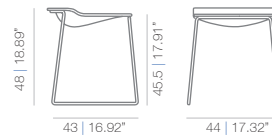
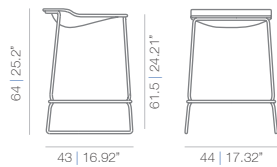
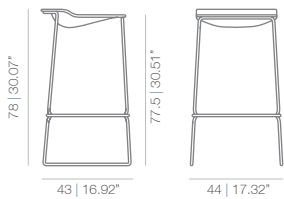
8 (800) 500-70-36
hello@barcelonadesign.ru
design@barcelonadesign.ru 2006
www.barcelonadesign.ru



HIGH STOOL

MEDIUM STOOL

LOW STOOL



PROJECTS

AC Hotels | American Career College INC | ANZ Bank | Auburn University | Australian Post | Bank of America | Citi Bank Headquarter | Clorox Co | Godiva Store | Google Mexico | Hertz Global Holdings Inc | Kaiser Foundation Health Plan | Mandarin Hotel | Microsoft Corporation | Muskat Bank | NZB Bank | Omnicom Group | Radisson Hotels | Royal Dutch Shell Plc | Sabadell Atlantico Bank | Telus Corporation | Walgreen Company | Bank of Nova Scotia | Government of the United States | Texas Tech University System | S.U. La Nucia | La Seu Restaurant | Arola Restaurant | PortoSenso | P.R. House | Open Tennis VLC_2009 | Museo Principe Felipe | Open Tennis Valencia | La Nuba | Hotel Meliá Valencia | Hotel de la playa | GV Residence | Godiva Chocolate | E+J Residence | Blanco & Unoom | 39° 27N | 33rd America's Cup



Patricia Urquiola was born in Oviedo (Spain) and currently lives and works in Milan.

She graduated from the Faculty of Architecture at the Technical University of Madrid in 1989, after completing a thesis with Achille Castiglioni. From 1990 to 1992, she was assistant lecturer to both Achille Castiglioni and Eugenio Bettinelli at the Milan Polytechnic and the E.N.S.C.I. in Paris.

Between 1990 and 1996, she worked in the new product development office of De Padova and, with Vico Magistretti, signing the products: "Flower", "Loom sofa", "Chaise" and "Chaise Longue".

From 1993 to 1996, she worked with the architects de Renzio and Ramerino and was engaged in architectural design, showrooms, restaurants and franchising (Maska/Italy, Tomorrowland Stores/Japan, Des Pres/France).

In 1996 she became head of the design department at Lissoni Associati, working for Alessi, Antares-Flos, Artelano, Boffi, Cappellini, Cassina and Kartell, among others.

Her products were selected for the Italian Design 2001 exhibition. In 2001 she was chair of the jury for the 19th CDIM Design Award and was lecturer at the Domus Academy.

She is currently working in her own practice in Milan in the fields of design, exhibitions, art direction and architecture.

Patricia Urquiola works for Alessi, B&B, Kartell, Molteni, Moroso, Coalesse and VICCARBE.

PRODUCTS



TIERS table



BURIN table



LAST MINUTE stool