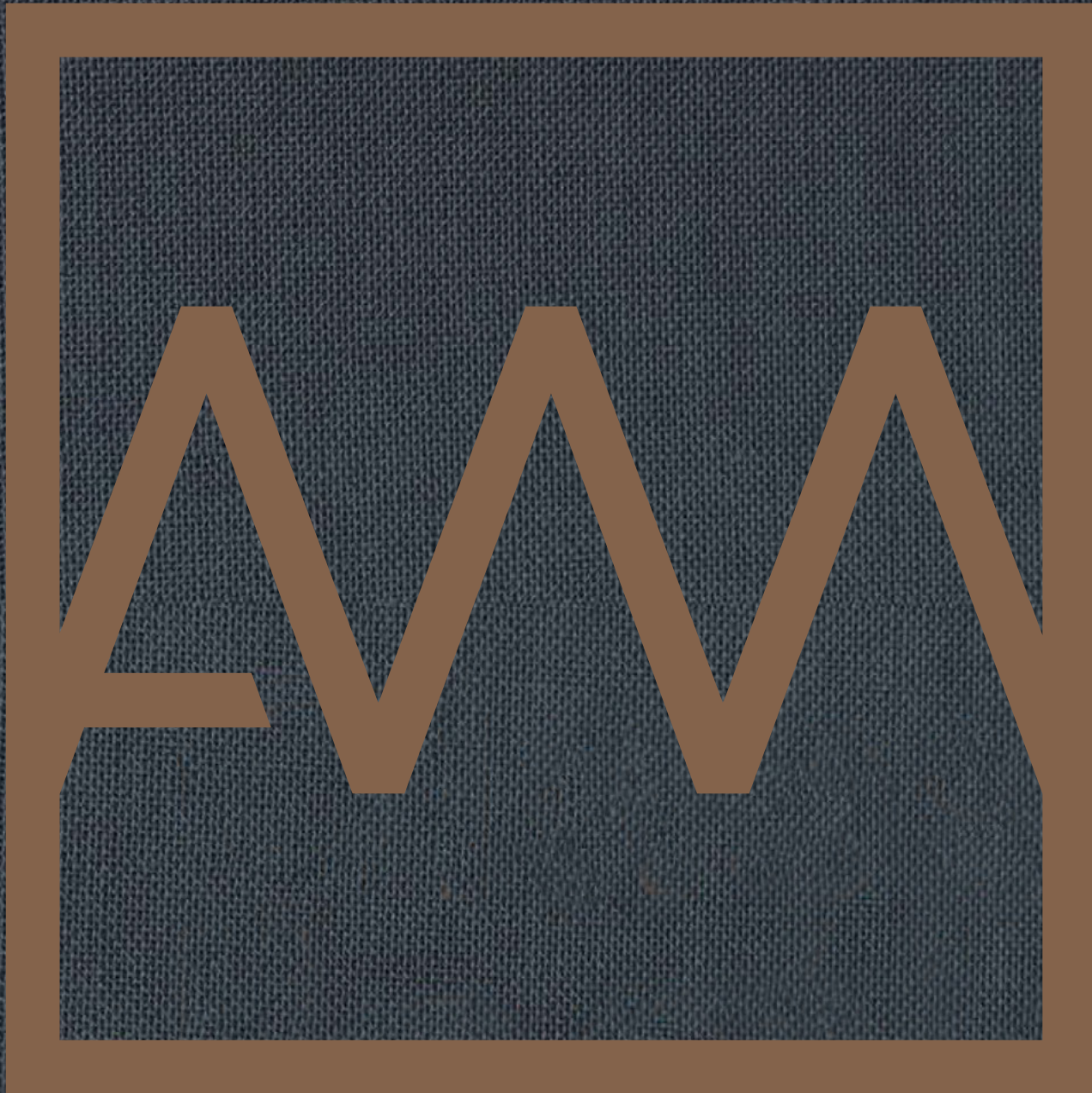


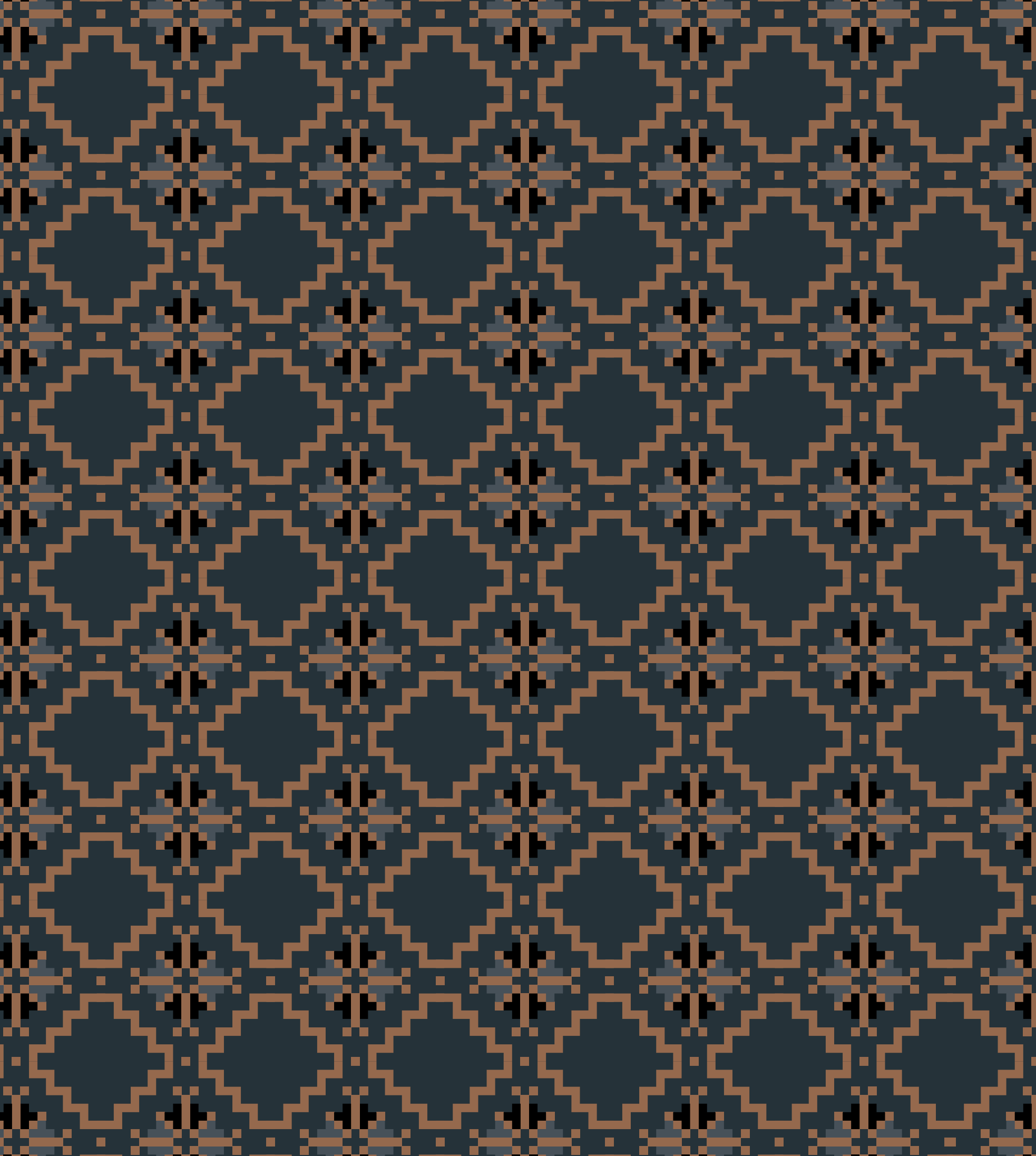


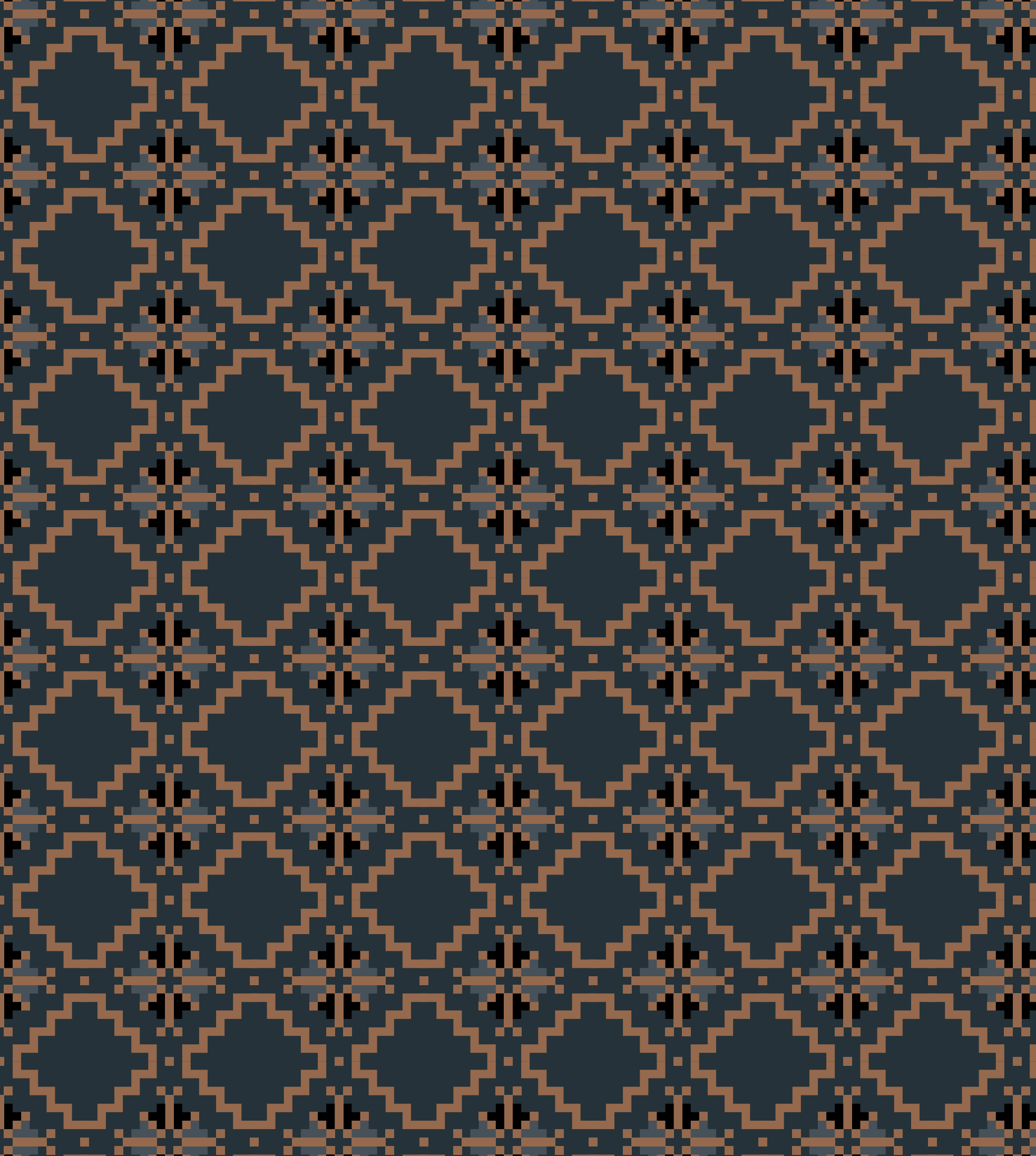
LIVING

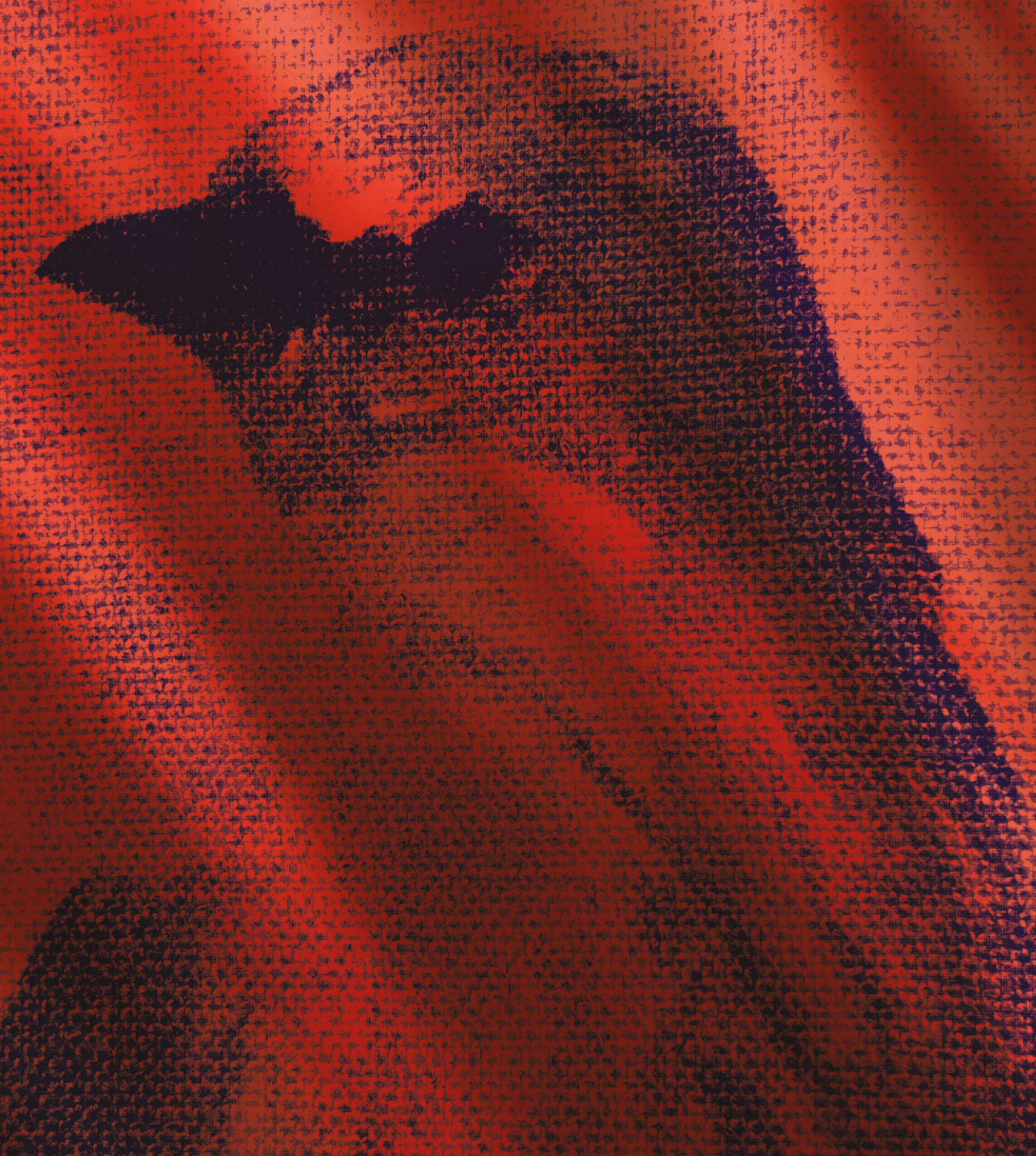
Classic Collection



AM FURNITURE GROUP
SINCE 1962











AM FURNITURE GROUP
SINCE 1962

With almost six decades of history, tradition and innovation, AMfurniture Group was born from Armando and Fernanda Ferreira da Silva's dream of bringing high-end woodwork craftsmanship and technical expertise together. Established in Paços de Ferreira, the northern-Portuguese heart of furniture industry, the couple created AMfurniture Group, which rooted its name in the pillars of quality and permanent innovation. Our exclusive aim is to bring the upmost comfort and beauty to houses and people all around the globe. And this is what this visual experience testifies to.

60
years

develops and manufactures
furniture since 1962, combining
handwork expertise with
technology and innovation





AMliving classic collection

From Baroque to Directoire inspirations, each piece of AMliving classic collection has its own unique concept, history and aesthetic.

We brought the highest quality pieces together to create four unforgettable atmospheres, in which every single chair, statue, painting and book plays a significant part.

Welcome to a new visual experience
brought to you by AMliving!

No, this is not a furniture catalog.

This is no cold display of soulless objects.

These are real homes, full of real people and real stories which fully reflect our values, our message and our desire to bring the past and the present together.



Classic Collection

4 real houses, full of real people and real stories

Nelson, Gabrielle & George 7 — 41

Viktor 42 — 63

Margarita, Maria, Emily & Aurora 64 — 91

Sylvie 92 — 115

Visual index 140 — 149

Product listing 151 — 171

Finishes 172 — 175

THE HOME OF

Nelson, Gabrielle & George

One traditional modern family: married in 1989, this charming couple of financial executives has a unique taste for fine arts, culture and history.

As a matter of fact, Nelson met Gabrielle quite unexpectedly when both were at the Paris Opera to attend a performance of La Sylphide. It's no surprise that their matrimonial life has been devoted to every form of artistic expression.

Nelson, Gabrielle & George

And then there's George: a vibrant lad in his 30s who nurtures a hedonist passion for life, beauty and comfort.

Unlike his parents, George enjoys the bohemian life and never gets enough of partying with his friends, traveling around the world and fulfilling his taste for high-end goods and experiences.

Yes, that includes décor elements, of course.





NIPENDE NIDNE RAHA USINI F

Nelson, Gabrielle & George

The living

Yet another place full of contrasts - vibrant blue, appealing red, and the harmony of natural cherry wood is pretty much everywhere. Just in case there were still any doubts regarding this family's absolute favorite color! Is there anything more appealing than blue velvet? Sure. A quiet corner full of books and comfy chairs – says Nelson.











DESIGN IN

AT

ART

ART

ART

ART

EDIFICIOS

ART

GRACA PORAIS
TERRA QUENTE
EXPRESSIONISMO
VERA DA SILVA
MORRER A OCCIDENTE
THE WORLD OF MURIEL BRANDOLINI

LA BRASCA

HIP HO



Nelson and Gabrielle are extremely passionate about reading and this is where the businessman spends most of his free time. This Directoire bookcase hosts more than 200 volumes and Nelson's collection isn't anywhere close to being finished. Can you sense Gabrielle's love for classical lines in those Tamara armchairs and in the carved details of that lovely side table?



Nelson, Gabrielle & George





The office

Here we can find a more pragmatic style reflected in the neoclassical lines and straight design of each element.

This desk stands out for its exclusive blue lining.

Some more neoclassical influence in the Louis XVI chairs...

And in the next page, a close-up of the most iconic element in the whole office: Parati chest of drawers.

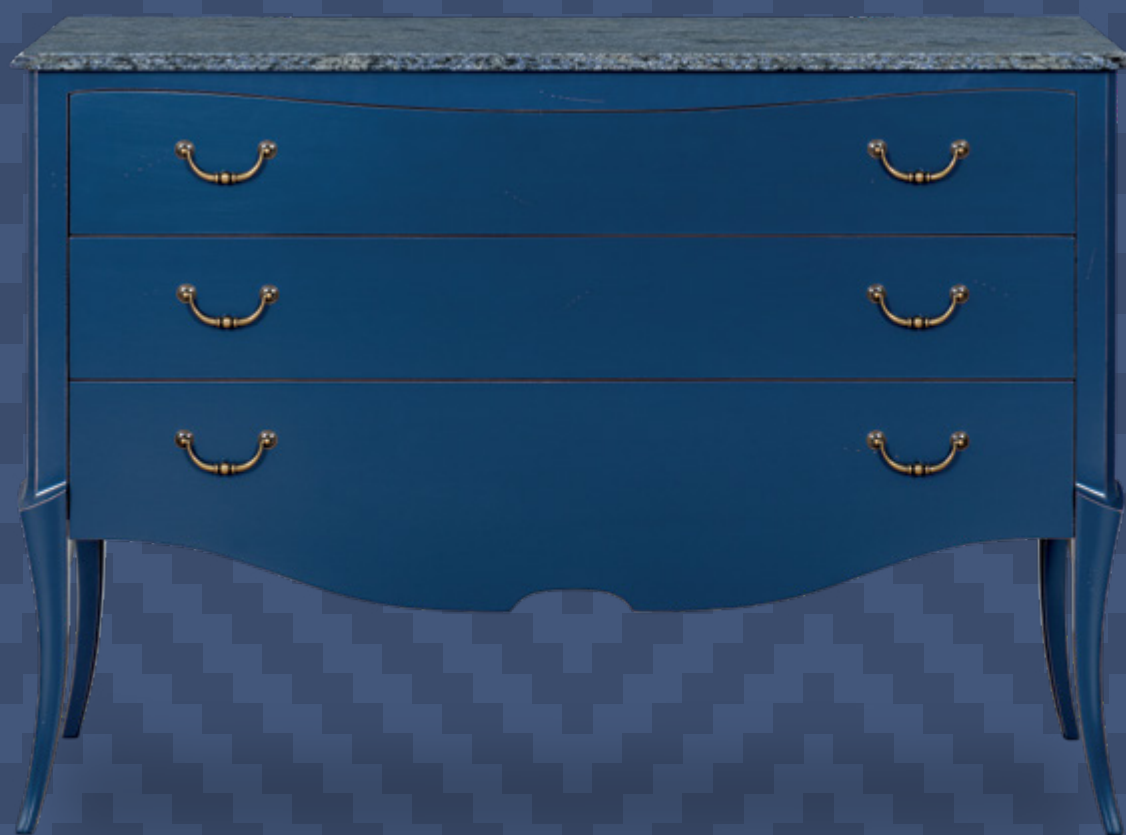








Nelson, Gabrielle & George









Nelson, Gabrielle & George



George's room

Believe it or not, George was the one in charge of his bedroom's décor just last year.

The daring contrast between those hypnotizing shades of blue and the sensual chinoise red creates an atmosphere which truly reflects George's energetic and passionate personality. Here and there you may also find some unexpected, sober classic touches... Gabrielle's hand, no doubt!

George is not fond of straight conventional lines. The word irreverence comes to mind when looking at this bed and those bedside tables.

George chose this beautifully checkered lining for his Matisse bed. Irreverent, to say the least.





Here we have the Isadora wardrobe, granting this bedroom a classic twist, with its traditional design and sober beige. And this captivating France bureau is George's favorite element. It couldn't be otherwise, given the unique color contrast it presents.

Our extravagant lad had to find a way of making a delicate and classical piece such as the Vienna armchair look trendy and showy: This marvelous striped lining was the answer.





Nelson, Gabrielle & George









Nelson, Gabrielle & George



The couple's bedroom

A soft ambient that reflects Gabrielle's personality, energy and tastes in its balanced and elegant profusion of navy blue, amaretto and natural cherry wood.

This Juliette bed stands out for its magnificent tweed lining, bringing some flare to this quiet atmosphere.

And this majestic Louis XV chest of drawers is Gabrielle's favorite piece. She's particularly fond of its vibrant navy blue top and the irregular contours. Some more natural cherry details, and...

Navy blue has a special place in this family's heart.

And finally, Nelson's little private reading corner, with its cozy Louis XV armchair and delicate Caroline side table.

He cherishes this tiny refuge more than any other place in the world!





THE HOME OF

Viktor

This is the haven of an independent, quiet, sober man. An architect in his late forties who could never get used to co-living. No, not even with his three former wives. And this mansion is a perfect mirror of a lonely soul full of idiosyncrasies. Almost austere in its profusion of soft nude colors and geometrical elements, this house was meant as a showroom for Viktor's ever-growing collection of paintings, books and fine archeological relics.





Viktor



The entryway

The first element you'll see here mirrors perfectly Viktor's passion for the neoclassic just as well as his own character.

In fact, this sideboard is his favorite furniture element in the entire house.

Adonis is a tribute to Greek architecture and aesthetics: Its symmetric design, delicate carved elements and, especially, the Parthenon-inspired columns on its basis really embody the soul and ambiance of this mansion.

There's also some space for a Rocaille touch, represented by this dainty Vienna armchair.

You see, even when flowers, leaves and non-symmetric elements were allowed, Viktor remained faithful to his love for sober, nude colors.





Viktor

The living

Take note, these two striped-lined majestic sofas weren't exactly Viktor's idea. The sofas, as well as those very lively pillows, were a gift from his late mother, Therese. Viktor will never, ever get rid of them. Well, he's not getting rid of these pretty, handy Opium side tables either. Here we have yet another magnificent emblem of classic elegance, the Louis XIV Baroque-inspired chest of drawers. In grey, of course. Softly carved, obviously. Column-legged, Parthenon-inspired, necessarily! Did anyone say Baroque?







Reading corner

Viktor's most cherished room.

This was meant as an alternative, more intimate, cozier living room. But the lone wolf who owns this property won't let anyone in here. "Quietness requires privacy", he says. Each tiny décor element you may spot here came from Therese's magical hand.

However, Viktor easily admits he's quite fond of the lively pillows here and there and of the trendy lining in those Dalila armchairs. He loves the comfort of that seashell shape, in fact.









Viktor

Dining

Viktor finds the tapered legs in that extensible Opium table very unique, almost exotic. He appreciates it, nonetheless.

Here we have the Lille chest, with its beautiful high-relief details, elegant design and wonderful marble top.

And these two Louis XV showcases are one of the decorative treasures to spot in this house. Their coldgrey vanished finish gives you a glimpse of raw natural wood whilst presenting a sophisticated design.

And they're stuffed with Therese's porcelain and silver treasures as well as Viktor's fine china private collections, which he never ever touches or uses, obviously.









Viktor

Bedroom

Viktor has no idea – he’s terrible at memorizing names – but his cherished bed is part of the Gala collection.

Gala, a direct reference and tribute to the muse and opium of Viktor’s most admired artist... Salvador Dali.

Say hello to the Dalila armchairs and tiny comfy reading sofa we’ve just seen downstairs! Yes, Viktor is very fond of them, indeed.

And this ardoise and beige piece serves both as a chest of drawers and as a bureau.

Obviously, our pragmatic architect keeps most of his paper sheets and plans here. You’ll usually find its interior turned into a mess of color pencils and drawers, sketches, geometry instruments and so on...

Is there the need to refer that this full body mirror is never used for its purpose?





Viktor









THE HOME OF

Margarita, Maria, Emily & Aurora

The pink universe we're about to discover emerged graceful and resourcefully from the contributions of three generations of wonderful, diverse women:

Margarita, a contagiously youthful, creative and fun granny; Maria, a forthright, calm and collected daughter, mom and woman; and the twins, Emily and Aurora, similar in their appearance but so different when it comes to their tastes and personalities.

This mansion reflects femininity and joy in every single detail of its warm, rosy and appealing diversity of colors, textures and styles.





Margarita, Maria, Emily & Aurora



The Entryway

Say hello to the Canova sofa. Everybody here happens to love its velvety touch and neutral brick tone, which allows grandma Margarita to be inventive with her many, many décor pillows. Maria brought this Vermont side table from her former apartment. She loves the long cabriole legs, the tray design on its top, and, of course... its dainty pink tone.

By the way, this house has a fluffy feline inhabitant named 'Darius'. Yes, Margarita has a Persian passion in her veins and the gorgeous tapestries in this majestic entryway aren't the only thing testifying to it!

Margarita, Maria, Emily & Aurora

The dining room

This is definitely the most consensual room in the entire house.

Everybody here loves the graceful Lotus II dining table, which is perhaps the most classical piece to spot in the mansion.

Additionally, both Margarita and Maria love to organize sumptuous dinners for their respective friends, and two completely distinct generations require a classy, pleasing set-up.

The Rocaille-inspired Suzanne chairs, cane-backed, with the expected pink lining..

This Louis XV showcase is yet another wonder.

Here, the salmon-pink lacquer was a choice of the twins, who absolutely share granny's pink mania.

Take a look at those vintage curtains inside, enhancing an endless amount of decorative porcelain and high-end tableware.





Margarita, Maria, Emily & Aurora

As a matter of fact, Margarita's obsession for silverware and china makes her pragmatic daughter a bit nervous. It's understandable, given that she has recently traveled to Japan, Brazil and New Zealand exclusively to acquire some of the most expensive sets to be spotted here!

The living

Definitely the most daring set in this house, this is where the 13 year-old twins spend most of their free time... watching TV, playing and messing around with anything entertaining and, of course, fighting each other. Physically, yes. The very avant-garde Copacabana TV modular, perfectly symmetric in its design and quite useful with all those drawers... The Bourbon armchairs – one for each twin – marvelously lined with their chosen pillows.













Margarita, Maria, Emily & Aurora

Here, the boldest, showiest element in this room was also the drive for yet another private war between Margarita and her daughter: Maria isn't very fond of this Louis XV sofa. Her mom, however, doesn't get enough of its unique Persian-inspired floral motifs and chinoise contour.

Margarita would gladly place Persian patterns everywhere around the house, if only her tastes and Maria's weren't so incompatible.

Unanimously chosen and equally cherished, the Lotus II console gives this living a touch of classical elegance. Our sober Maria is particularly in love with its coldgrey vanished finish.

Maria decided to add this gorgeous gold-leaf-endowed classical mirror in order to grant more luminosity to this enchanting room.





Margarita, Maria, Emily & Aurora

The office

Maria's sense of pragmatism and straightforwardness have a lot to do with her job and passion: chemical engineering.

And this is her place of comfort. It thus reflects her taste for straight lines, sober elegance and simplicity.

Here they call it "the blue room".

This bluebell Majestic dining table – a very appropriate name, indeed - is used as a desk here, and Maria's twin daughters use it for studying and drawing – when mom isn't at home...

In those Louis XVI chairs you can spot Maria's cherished coldgrey vanished finish, perfectly endowed by a very calming reddish lining and the Parthenon-inspired neoclassical legs.





Margarita, Maria, Emily & Aurora

The Directoire bookcase, in which Maria, Aurora and Emily keep all their academic materials – including Maria's very first chemistry kit as well as three copies of her PhD thesis.

Finally, this Versailles chest was chosen by the twins, hence its extremely contoured shape and elaborated gold handles.





COOPERATIVE
RT 506

DESIGN INSPIRATIONS
GAUDI
INTERIOR VISIONS
DAVI

EILEEN GRAY
DAVID HICKS
EUROPA 1492
EUROPA 1492

EUROPA 1492
EUROPA 1492

EUROPA 1492
EUROPA 1492

ART
FASHION
PHOTO

Corporate Interiors
ONNOSCHI
PAPA REGO
LICIAN FREUD
NITZAVY
CORPORATE INTERIORS

THE WORLD OF ADE
POMAR
THE WORLD OF ADE

COOL HOTELS
BEST OF EUROPE
CENTURY
THE WARHOL LOOK
ADMANNIA DACCOK
CARAVAGGIO

IMPRESSIONISMO
ex pintores e de pinturas
POS-IMPRESSIONISMO
e nacimiento de arte moderna
RENASCIMENTO

100
DESIGN
A-Z

100
DESIGN
A-Z
POMPEU
arte
DALI
FURNITURE
ADÃO
LUXURY HOTELS

ARTODAY
LUXURY HOTELS
TIM WALKER STORY TELLER

MAGNUM
MAGNUM
FASHION NOW
LUXURY HOTELS
TIM WALKER STORY TELLER

ATLAS ENCICLOPÉDICO UNIVERS

EUROPA 1492
EUROPA 1492

Small decorative objects on the desk, including a blue sphere and a white bowl.

Small vase with purple and pink flowers on the desk.

White decorative bowl on the desk.

Margarita, Maria, Emily & Aurora

The twins' bedroom

It was hard for both Maria and Margarita to conciliate the 13-year-olds' tastes and preferences.

But here it is, Emily & Aurora's room:

Two Matisse single beds, in white with the headboards lovingly lined with this striped pink fabric. Very girlish, lively and soft.

During her pregnancy, Maria wanted to call the twins Lara & Zara. Thus she kind of loves the way her chosen bedside table belongs to the Lara collection! It is such a dainty, girlish piece!

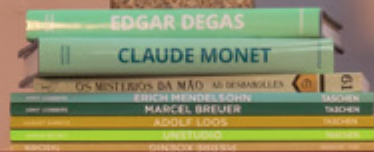




Margarita, Maria, Emily & Aurora

The Pompadour bureau is of double utility: desk and cabinet. Aurora wanted her desk painted blue, Emily wanted hers white, to go with the beds. Maria, however, thought it was safer to leave both chinoise outside and pink inside.





Margarita, Maria, Emily & Aurora

Margarita's bedroom

Our 64-year-old granny has this passion for classical lines, elaborated elements and femininity in its entire splendor.

Another example of the Majestic collection: its headboard was splendidly lined with pink velvet and its structure presents a very neutral amaretto lacquer.

Here we have the Florence side tables, lacquered in beige and with its natural cherry wood top.









Margarita, Maria, Emily & Aurora



And this is Margarita's private reading corner, made of the Louis XV desk in dusty pink and a very comfy Louis XV upholstered chair. Everything is pinkish, warm and lovely in this classical bedroom!





THE HOME OF

Sylvie

Welcome to the serene refuge of a retired French violinist who had never found her true place of comfort before.

Very fond of hiking, gardening, cooking and anything bricolage, Sylvie has a very expansive, open, warm personality, and her house was tailored to match her character.

The décor in this countryside mansion was inspired by Sylvie's months-long stays in places such as the Russian Altai Mountains, the Svalbard Islands or the Atacama Desert. It thus relies on the appealing of raw woods, ochre and brick tones, natural motifs and a perfect balance between comfort and rural vintage.





Sylvie



The hallway

The Rincões chest of drawers could figure in any illustrated dictionary as a synonym for vintage: its raw oak wood, daintily carved in the center and its curvy, Rocaille-inspired design were key to create this charming, antique ambiance.

The same applies to this absolutely majestic, extremely carved, gorgeously-shaped mirror! Keep in mind that this house is all about bucolic comfort: Sylvie could never leave the Annelo armchairs out of her entryway.

The pied-de-poule pattern was chosen by her beloved little niece, Mathilda.



The office

Known as “the teal room”, this cozy office is scarcely utilized by the lady of the house. Currently, Sylvie’s nieces and little cousins use it for studying or reading in their routine weekend trips to ‘dear Sissi’s castle’.

Behind the extremely graceful Oriente desk you can spot the Brasil armchair, a gift from niece Jesse just last Christmas.

Too avant-garde for Sylvie’s sensitivity, but undeniably comfy!

Did anyone say comfort?





Sylvie

This brick-colored, saber-legged, marble-endowed Baroque console is most definitely Sylvie's cup of tea. She thinks it's way too stylish to be kept in this rather austere office, though. Perhaps soon we'll get to see it elsewhere in the house!

Here, some more Rocaille inspiration... always connected to the raw energy of natural oak woods.





Sylvie

The living

Sylvie's most cherished room: The wallpaper that endows this ambiance is very dear to our French lady, due to the way it reminds her of her childhood sun-kissed autumn afternoons, in a small rustic village in the outskirts of Toulouse.

The various shades of green, brick, gold and ochre match perfectly this lovely set of skirted sofas.

And this beautiful center table is very dear to Sylvie just as well, as it reminds her of classical Greek architecture and her splendid professional and leisure stays in Athens, Thessaloniki, and her beloved Patras.





Leonardo da Vinci

Oliver
Compton
& Partners
& Directors

TAUCHEN





Sylvie

The dining

This round extendable Opium table is quite necessary each Sunday, when our former violinist organizes her sumptuous familial lunches.

You'll often find up to 30 people gathered at the house, in a Babel Tower parody: French, English, Spanish, Portuguese, Polish and Russian are dynamically spoken and heard in this room.

Yes, Sylvie has plenty of those Canova tweed-lined chairs stored elsewhere...

Of course, she had to find a way of bringing the marvelous autumnal motifs of the wallpaper seen in the living room to her beloved Primrose showcases.

And here it is!





Sylvie

Reading corner

Perhaps unexpectedly, Sylvie is not particularly fond of reading. She prefers dynamic, challenging outdoor activities, especially gardening.

Yet, she felt the need to create this very comfy reading corner, mainly to display this gorgeous dark-green chaise longue, brought from Monaco. And this uniquely dewps as souvenirs.

Here you can find a theatre ticket for Mariinsky's La Bayadere back from 1985, or an invitation addressed to Sylvie for La Scala's 1997 New Year's concert!









Hallway

This entryway was daintily adorned with Sylvie's most cherished china, paintings and jars. She considers it to be too small for her endless collection of fine, "meaningful objects", as she calls them. Zora seems to be everybody's favorite armchair.





Sylvie

The bedroom

A warmer, more intimate, comfortable
ambiance. Sylvie's bedroom was
radically tailored to fit her dynamism,
energy and flare.

Her favorite objects, styles and colors
have all been gathered here!

She never thought she'd be so fond
of the striped satin that lines Gala's
headboard and frame.

Just in case it wasn't obvious enough,
natural oak is absolutely predominant
in Sylvie's private world.









Thank you for diving with us into George's vibrant world, for joining Viktor's quiet haven, for mixing into Margarita's colorful rosebud and for exploring some of Sylvie's treasures!

Curious about the concepts and inspiration behind this visual experience?
Get to know the full story behind this catalog by watching the making-of:



Join AMLiving classic collection online:
www.AMLiving.com
Explore AMfurniture Group and get to know
all the other areas of expertise at:
www.AMfurnitureGroup.com



LIVING

inspiration
tradition
future
modernity
know how
worldwide
innovation
technology



inspiration







tradition

100156 155

33

100156 111

100156 160
258

know how











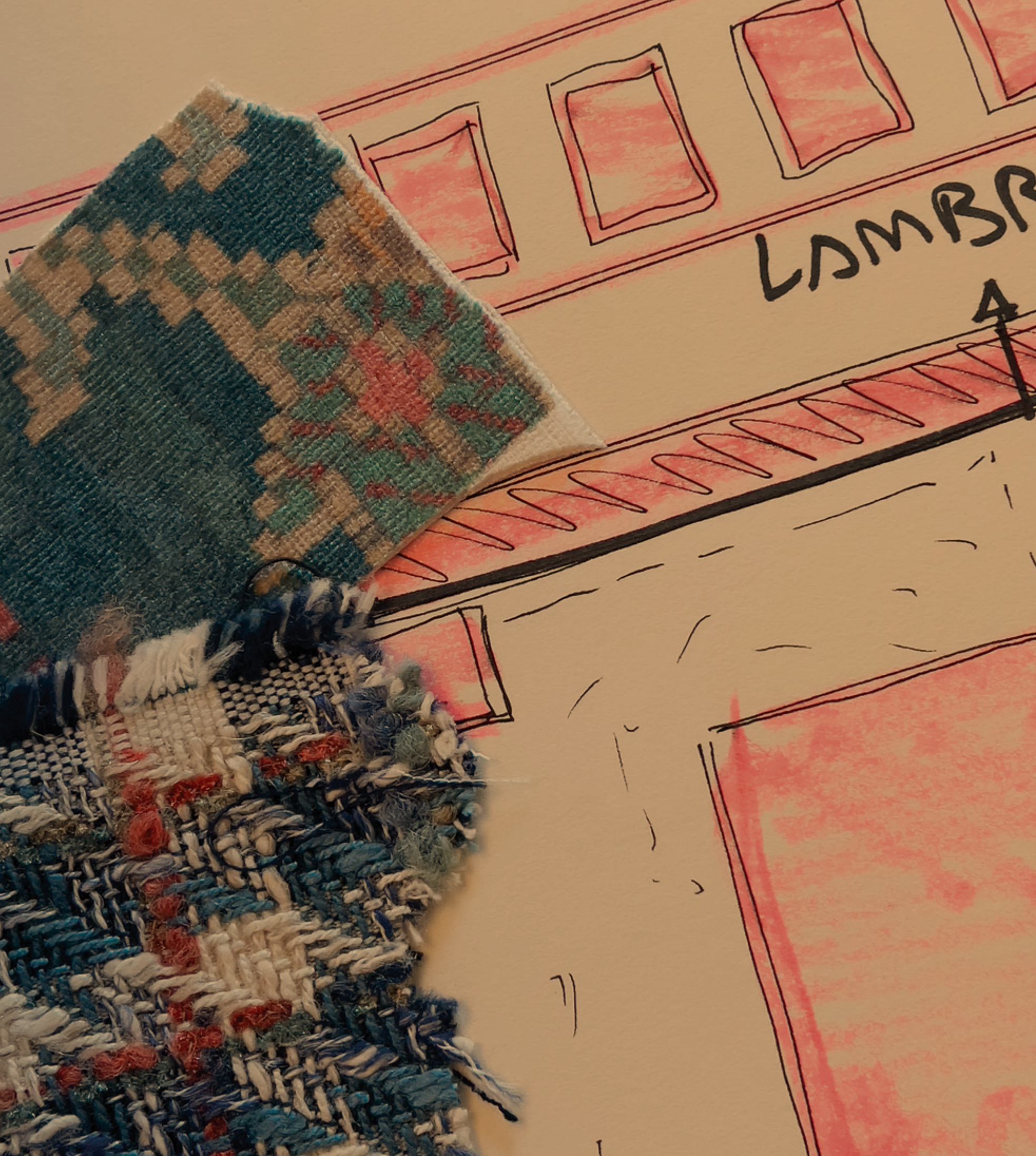




innovation





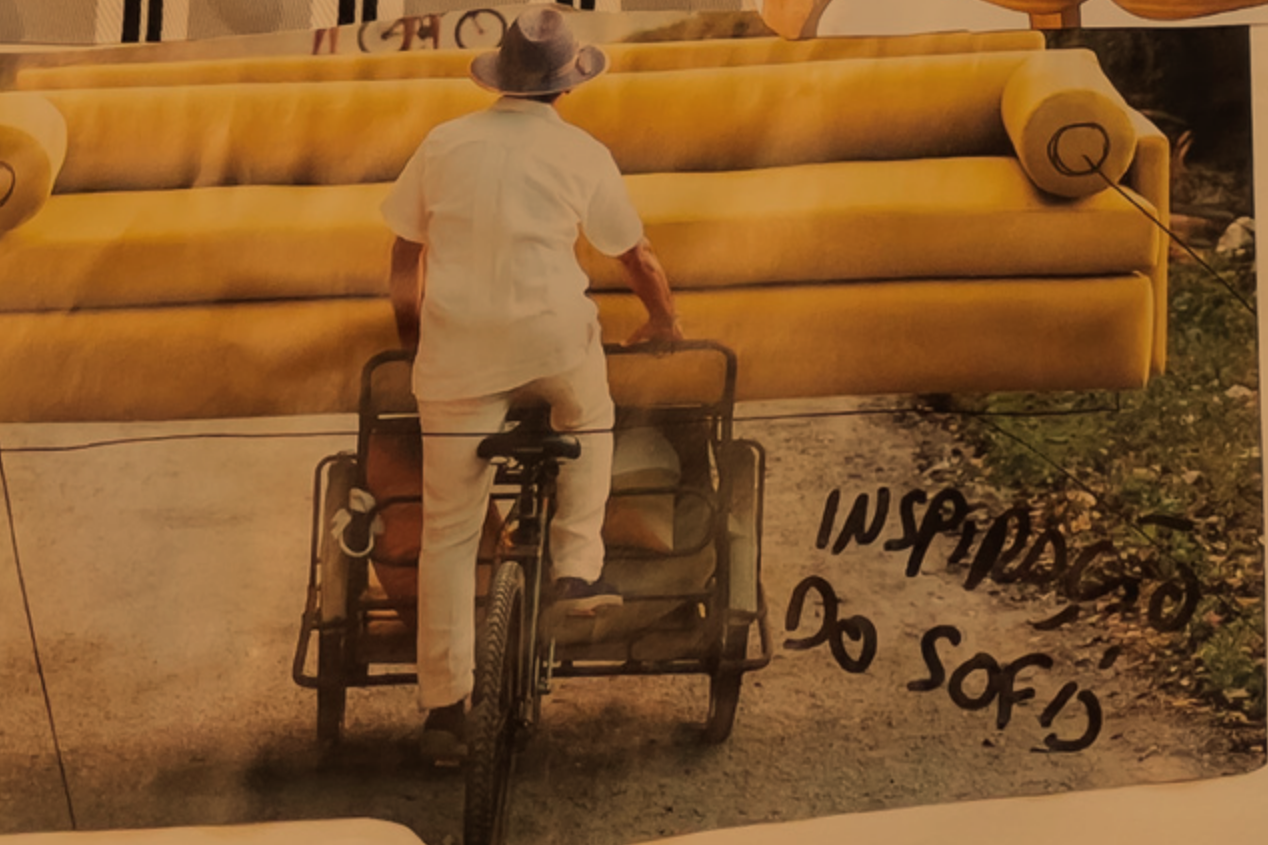


LAMB

A



REUER BASS



INSPIRAÇÃO DO SOFÁ



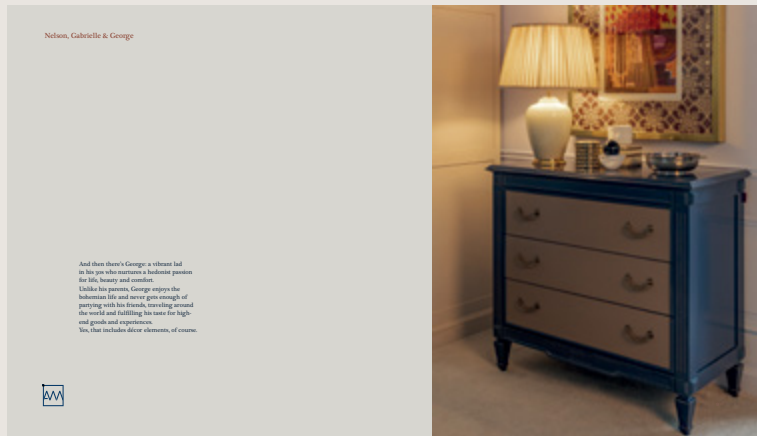
NONO
NOSTRAL



REUER BASE



Nelson, Gabrielle & George



8

9



10

11



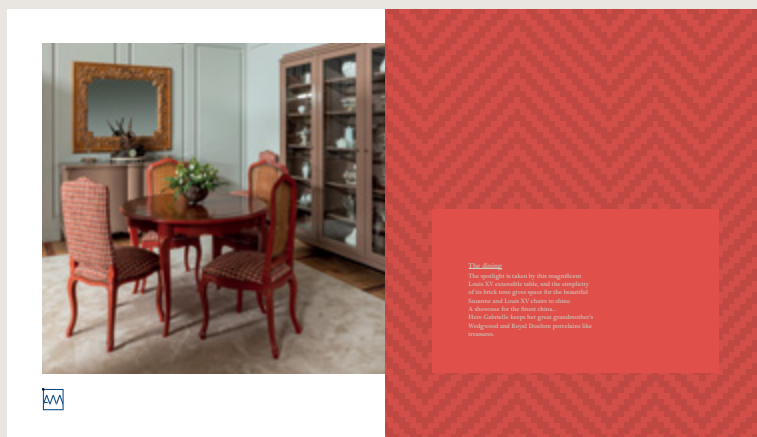
12

13



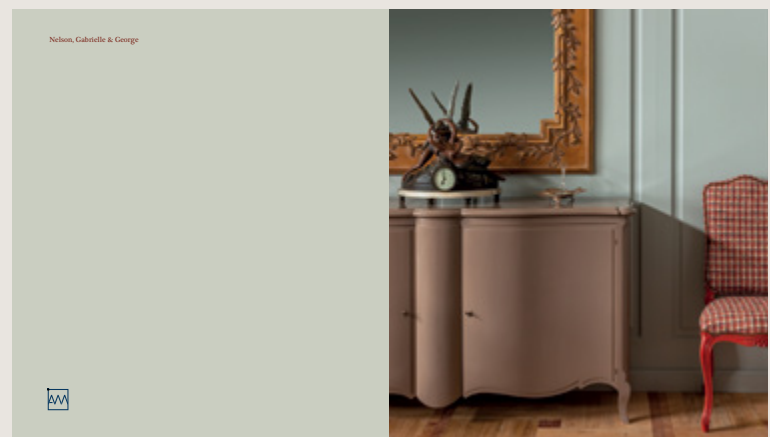
14

15



16

17



18

19





20

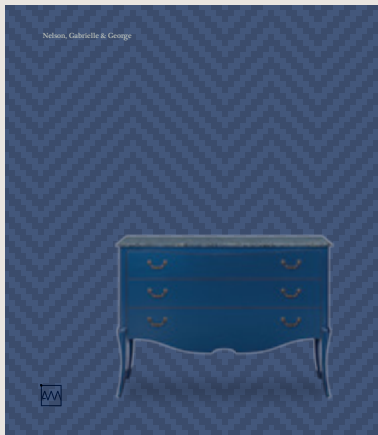


21



22

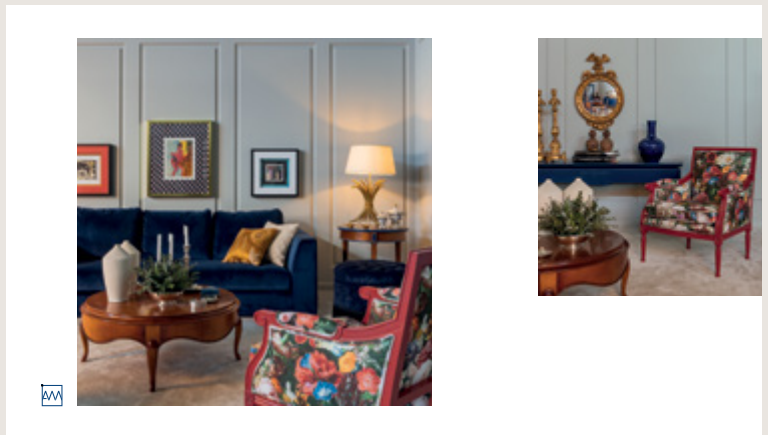
23



24



25



26

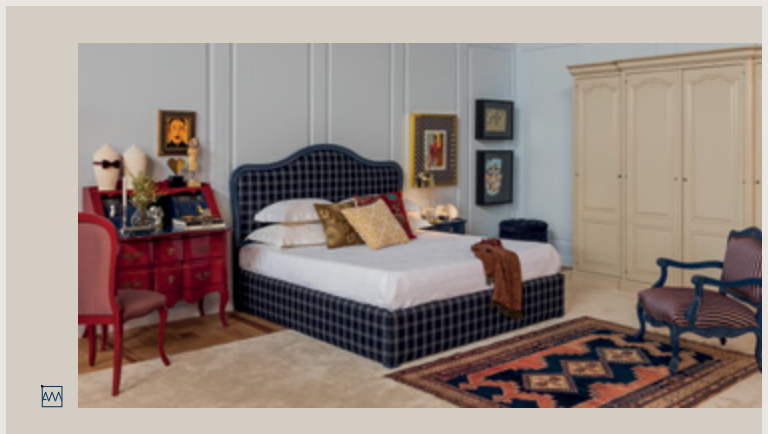
27



28



29



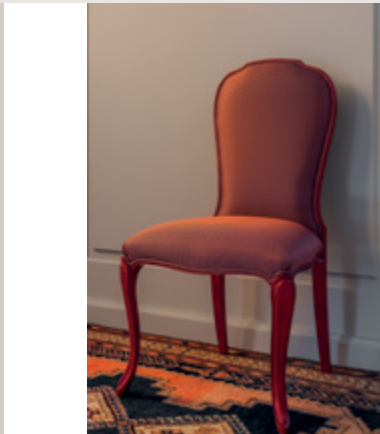
30

31

Nelson, Gabrielle & George

Here we have the leaders working, granting the bedroom a classic look, with its traditional design and sober beige. And this surprising frame houses a George's favorite element. It could be delicate, given the unique color contrast it presents.

Our entrepreneur had had to find a way of making delicate and classical pieces such as the Verona armchair look trendy and alive. The marvelous original thing, not the answer.

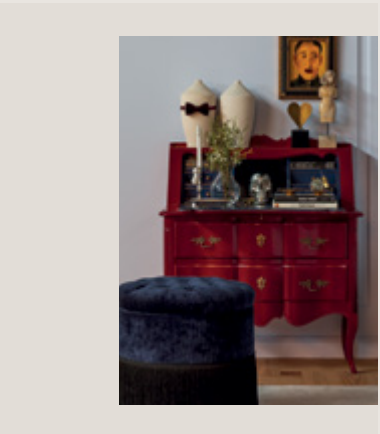



32

33



34



35



36

37



38

The couple's bedroom

A rich embrace that reflects Gabrielle's personality, energy and taste in its balanced and elegant palette of navy blue, vermilion and natural cherry wood.

The Juliette bed stands out for its magnificent round form, bringing some flare to this quiet atmosphere. And this magical Louis XV chest of drawers is Gabrielle's favorite piece. She's particularly fond of its vibrant navy blue top and the singular contrast. Some more natural cherry details, and...

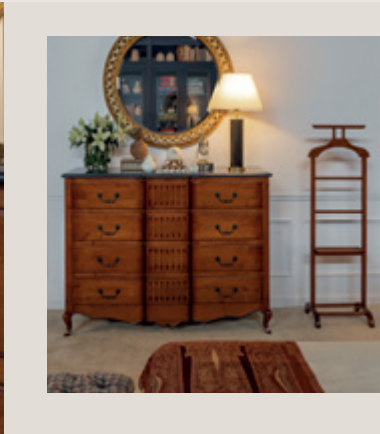
Navy blue has special place in this family's heart. And finally, Nelson's little personal reading corner, with its cozy Louis XV armchair and delicate Caroline side table.

He cherishes this little refuge more than any other place in the world.

39



40



41



Viktor



THE NAME OF Viktor

This is the home of an independent, quiet, subtle man. An architect in his late twenties who could never get used to working. No, not even with his three former wives. And this remains a perfect mirror of a steady and full of adventures. Almost entire in its possession of well-made, colorful and personal elements, the house was created as a statement for Viktor's ever-growing collection of paintings, books and fine antiques of art.



42

43



Viktor

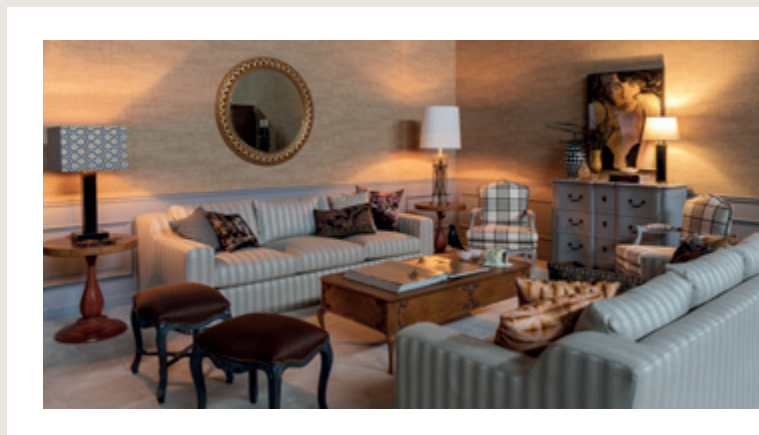
The entrance

The first element you'll see here mirrors perfectly Viktor's passion for the masculine, just as well as his own character. In fact, this sideboard is the dominant furniture element in the entire house. Adds a touch to create architecture and aesthetic, by symmetric design, delicate curved elements and, especially, the Portuguese-inspired columns to beautifully embody the soul and ambience of this mansion. There's also some space for a Rocaille touch, represented by this dainty Vienna porcelain vase, even when flowers, leaves and non-symmetric elements were allowed. Viktor remained faithful to his love for subtle, made custom.



44

45



46

47



Viktor

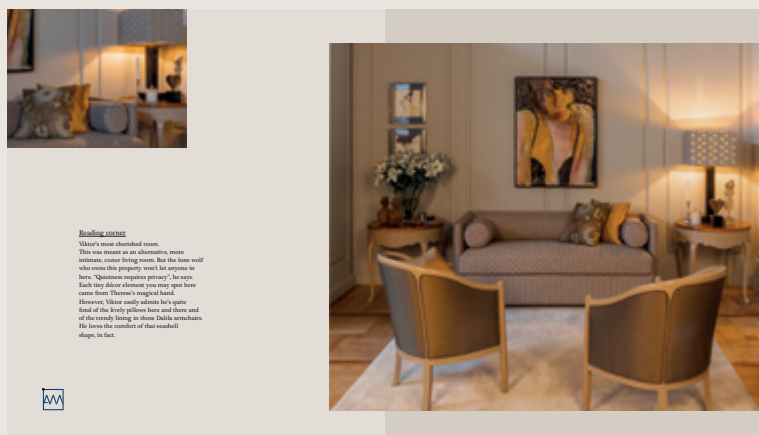
The living

Take note, there are two striped-lined magazine sofas, exactly Viktor's idea. The sofas, as well as those very lovely pillows, were a gift from his late mother. There's Viktor will never ever get rid of them. Well, he's not getting rid of those pretty, hand-painted side tables either. Here we have just another magnificent combination of classic elegance, the Louis XV Baroque-inspired detail of drawers. In grey of course. Slightly curved, obviously. Columns tapered, Portuguese inspired, asymmetrically. Did anyone say Baroque?



48

49



Reading nook

Viktor's most cherished room. This was meant as an alternative, more intimate, quiet living room. But the line itself who owns this property won't let anyone in here. "Quietness requires privacy," he says. Each tiny detail element you may spot here came from Viktor's singular hand. However, Viktor easily admits he's quite fond of the lovely pillows here and those and of the lovely living in those Dalis' artworks. He loves the comfort of their wavy and shape, in fact.



50

51



52

53

Viktor

Dining

Viktor finds the tapered legs in that
cumbria dignitable very unique, almost
comic. He appreciates a, nonetheless,
Here we find the Little dove, with its
beautiful high-velvet details, elegant design
and wonderful marble top.
And then the Little X's, otherwise are one
of the decorative treasures to open in this
house. These vintage woodwork finish gives
you a glimpse of our natural wood while
presenting sophisticated design.
And they're crafted with Thorne's passion
and clear resources as well as Viktor's fine
taste private collections, which he never
ever reaches or sees, ultimately.



54

55



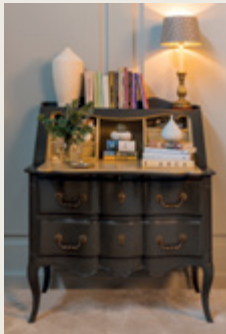
56

57

Viktor

Bedroom

Viktor has no idea - he's terrible at
remembering names - but his childhood had
a part of the Gale collection.
Gale, a direct reference and tribute to the muse
and spirit of Viktor's most admired artist,
Salvador Dalí.
They both in the public structure and they
could be said, with us, to just seem dominant?
Yes, Viktor is very fond of them, indeed.
And this archive and huge piece serves both as
a form of discovery and as a lesson.
Obviously, our pragmatic architect keeps
most of the paper sheets and plans here. You'll
usually find in his interior turned into a mass of
color pencils and markers, sketches, geometry
instruments and so on.
It shows the need to note that this full body
interior is never used for its purpose!



58

59

Viktor



60

61



62



63




Margarita, Maria, Emily & Aurora

THE NAME OF
**Margarita,
Maria,
Emily &
Aurora**

The pink universe we're about to discover emerges gradually and sensually from the construction of three generations of wonderful, diverse women.

Margarita, a voraciously youthful, creative and fun granny. Maria, a forthright, calm and collected daughter, mom and business, and the twins, Emily and Aurora, similar in their appearance but so different when it comes to their tastes and personalities.

This universe reflects femininity and joy in every single detail of its warm, cozy and appealing diversity of colors, textures and styles.



64

65

Margarita, Maria, Emily & Aurora



The Furniture

So hello to the Camera wife. Everybody here happens to live in a very touch and go world back times, which allows grandma Margarita to be creative with her many, many dinner parties. Maria brought this Vermont side table from her former apartment. She loves the long, colorful legs, the tray design on its top, and, of course, its dainty pink tone.

By the way, this house has a fluffy feline inhabitant named 'Doris'. Yes, Margarita has a Doris passion in her veins and the gorgeous tapestries in this magical entry area is the only thing standing in it!

66

67

Margarita, Maria, Emily & Aurora

The dining room

This is definitely the most essential room in the entire house. Everybody has to have the graceful Louis II dining table, which is perhaps the most elegant piece to own in the house.

Additionally, both Margarita and Maria love to entertain important dinner for their respective friends, and two completely diverse generations require a very different set of chairs.

The beautiful inspired Suzanne chairs, combined with the elegant pink tones, come from the custom pink tapestry on a chair of the twins, who absolutely adore granny's pink rooms. Like a look to their teenage years, they're embracing an urban aspect of decorative precision and light-colored colors.



68

69

Margarita, Maria, Emily & Aurora

As a matter of fact, Margarita's obsession for color and style makes her pragmatic daughter a bit nervous. It's understandable given that she has recently traveled to Japan, Brazil and New Zealand exclusively to acquire some of the most expensive sets to be spotted here!

The living

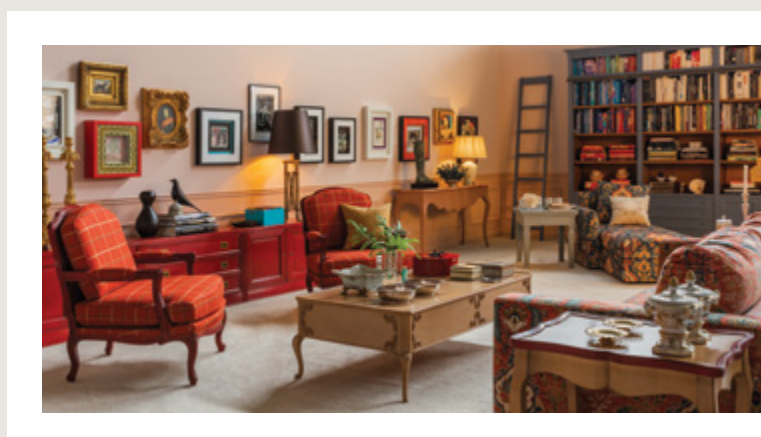
Behind the scenes during set in the house, this is where the 13 year-old twins spend most of their time, watching TV, playing and hanging around with anything entertaining and, of course, fighting each other. Typically, yes.

The very elegant Capadocia TV stand, perfectly symmetrical in its design and quite useful with all these devices. The bookshelves attachable - one for each twin - conveniently stand with their chosen pillows.



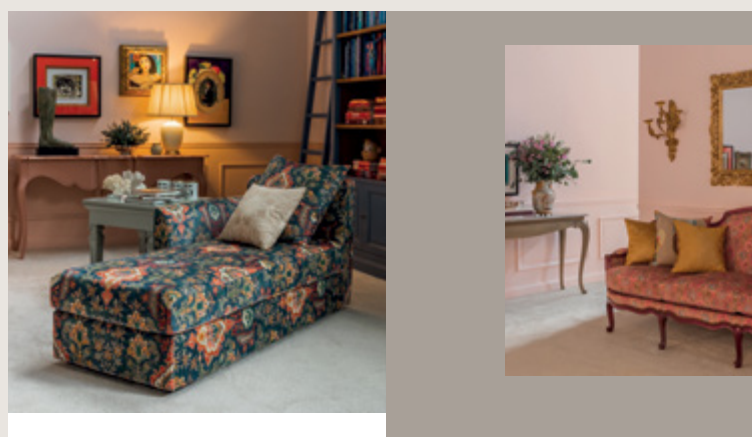
70

71



72

73



74

75

Margarita, Maria, Emily & Aurora

Here, the boldest, showiest element in the room was also the drive for you another prime one: between Margarita and her daughter Maria isn't very fond of this Louis XV sofa. Her mom, however, doesn't get enough of its unique Persian-inspired floral motifs and classic curves.

Margarita would gladly place Persian patterns everywhere around the home, if only her taste and Maria's were so interchangeable. Fortunately, classic and equally charming, the Louis II console gives this living a touch of classical elegance. Our robot Maria is particularly in love with its elegant, rounded classical mirror in order to grant more harmony to the matching room.



76

77

Margarita, Maria, Emily & Aurora

The office

Maria's sense of pragmatism and straightforwardness have a lot to do with her job and profession: chemical engineering. And this is the place of comfort, in their offices her taste for straight lines, when elegant and inspiring.

Here they call it "the blue room". The beautiful Majestic dining table – a very appropriate name, indeed – is used as a desk here and Maria's twin daughters use it for studying and drawing – when time isn't at home.

In these Louis XV chairs you can spot Maria's cherished college notebook from, perfectly combined by a very exciting, colorful lining and the Baroque-inspired mechanical legs.



78

79

Margarita, Maria, Emily & Aurora

The Directors' bookshelves in which Maria, Aurora and Emily keep all their favorite materials – including Maria's very fine chemistry kit as well as three copies of her PhD thesis.

Finally, the Venetian chair was chosen by the girls, since its extremely ornamental shape and elegant gold handles.



80

81

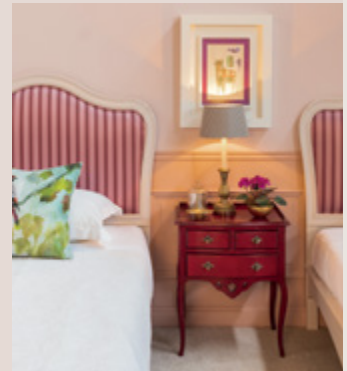
Margarita, Maria, Emily & Aurora

The main bedroom

It is no hard for both Maria and Margarita to conclude the 1920s-style tastes and preferences.

But here it is, Emily & Aurora's room. The Marquis' single bed is done with the headboard is brightly lined with this striped pink fabric. Very girlish, lively and soft.

During her pregnancy, Maria wanted to call the room & Aurora. Then she kind of knew the way her chosen bedside table belongs to the same collection: it is such a lovely girlish piece.



82

83

Margarita, Maria, Emily & Aurora

The Postgraduate bureau is of double utility: desk and cabinet. Aurora needed her desk material here. Emily wanted her white to go with the beds.

Maria, however, thought it was safer to have both chrome outside and pink inside.



84

85

Margarita, Maria, Emily & Aurora

Margarita's bedroom

Our 1920s-old grand has this passion for classical lines, rich ornamental elements and femininity in a more playful.

Another example of the Majestic collection: its headboard was originally lined with pink velvet and its structure presents a very unusual ornamental design.

Here we have the Florence side table, designed in Italy and with its natural cherry wood top.



86

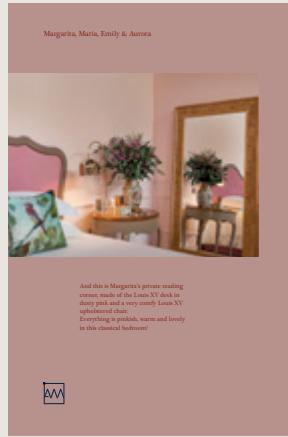
87





88

89



90



91

Sylvie



Sylvie

Welcome to the warm refuge of a retired French couturier who had never found her true sense of comfort before. Very fond of hiking, gardening, cooking and reading, Sylvie has a very dynamic, open, warm personality, and her home was tailored to match her character. The decor in this countryside mansion was inspired by Sylvie's childhood memories in places such as the Basque, Alsace, Brittany, the French Atlantic and the Normandy coast. It also relies on the appealing of red woods, white and black tones, natural materials and a perfect balance between comfort and rural vivings.



92

93



The hallway

The Basque chess of drawers could figure in any illustrated dictionary as a synonym for vivings. Its red oak wood, finely carved in the center and its curvy, Rocaille-inspired design were key to create this charming, unique addition. The same applies to this absolutely majestic, extremely curved, gipsy-style mirror. Keep in mind that this home is all about rustic comfort. Sylvie could never leave the Amaleo sconces out of her entryway. The pastels palette pattern was chosen by her beloved hair care, Marbella.



94

95



The office

Known as "the red room", this cozy office is warmly realized by the lady of the house. Currently, Sylvie's home and life routine are in the ending or ending in their routine weekend trips to "the Basque coast". Behind the extremely grandiose Chateau, did you see that the Basque armchair, a gift from some time ago to the Chateau. You want guide for Sylvie's assistant, but unfortunately, they did anyone say anything?



96

97



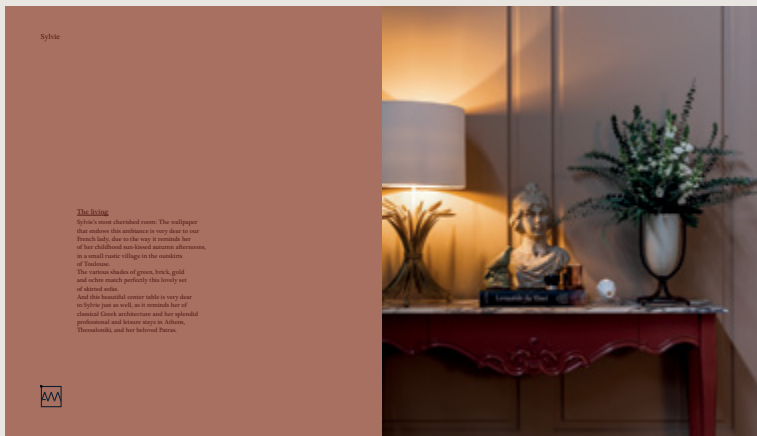
This brick-colored, white-legged, marble-topped Baroque console is most definitely Sylvie's cup of tea. She thinks it's very fun to play in the large in this rather warm office, though. Perhaps some we get to see a chaise in the house!

Here, some more Rocaille inspiration, always connected to the raw energy of natural oak woods.



98

99



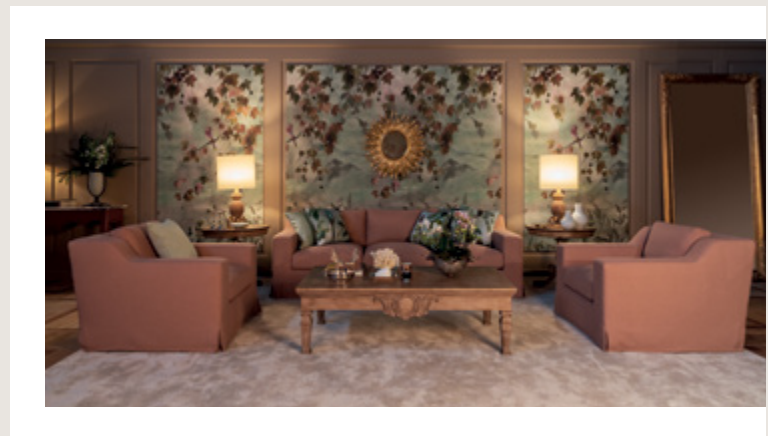
The living

Sylvie's most cherished room. The wallpaper that endures this ambience is very dear to her French lady, due to the way it reminds her of her childhood seafront summer abode, in a small rustic village in the mountains of Tignes. The warm shades of green, brick, gold and white match perfectly this lovely set of natural tones. And this beautiful center table is very dear to Sylvie just as well, as it reminds her of classical Czech architecture and her splendid professional and leisure stay in Achau, Thunau, and her beloved Paris.



100

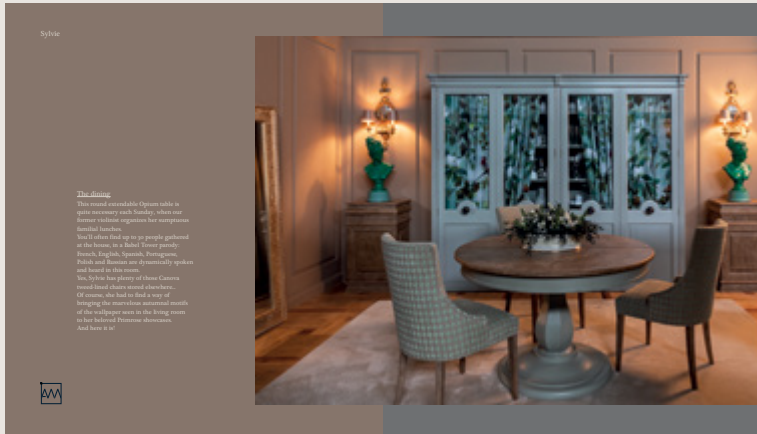
101



102

103





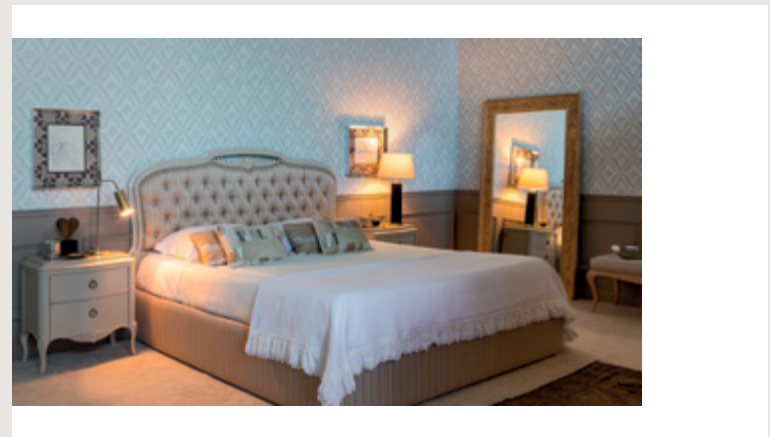
104



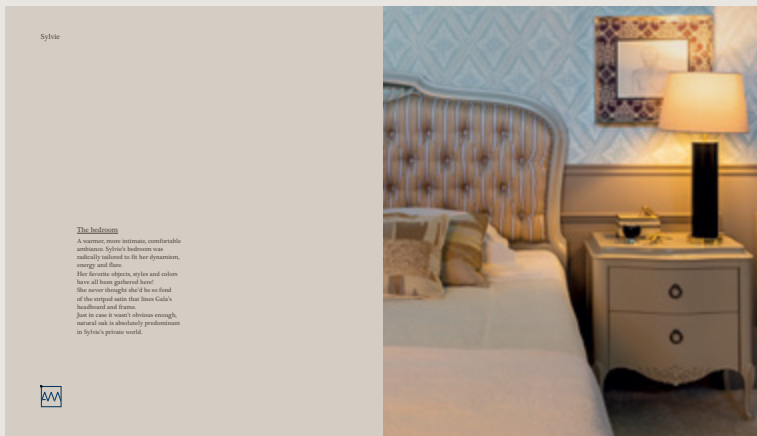
106



108



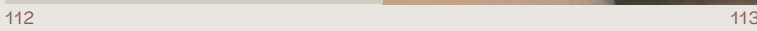
110



112



114



113

115

Classic Collection



CONSOLES 152

SOFAS 154

ARMCHAIRS 155

COFFEE TABLES 156

SIDE TABLES 157

TV UNITS 159

BOOKCASES 159

DINING TABLES 160

CHAIRS 161

SIDEBOARDS 162

CABINETS 163

SHOWCASES 163

DESKS 164

BEDS 165

BEDSIDE TABLES 166

CHEST OF DRAWERS 167

DRESSING TABLES 169

BENCHS 169

WARDROBES 170

YOUNG 170

HANGERS 171

LAMPS 171

MIRRORS 171

FINISHES 172

STANDARD AGING 175



Baroque II console
1,62 x 0,42 x 0,86
ABQCON02LE.TM
Page 97



Baroque console
1,62 x 0,42 x 0,90
17004



Clarendon console
1,50 x 0,40 x 0,75
ACDCON01LE
Page 53



Florence console
1,56 x 0,45 x 0,81
30072TM.LAC.D



Francis console
1,40 x 0,40 x 0,86
24070



Gala console
1,60 x 0,45 x 0,81
13072.ST



Grande console
1,64 x 0,46 x 0,81
AGRACON02LE.TM
Page 73



Haruki console
1,80 x 0,40 x 0,72
AHKCON01LE
Page 10



Hera console
1,59 x 0,41 x 0,84
29108CN





Jakob console
1,60 x 0,44 x 0,86
AC3403



Lotus II console
1,40 x 0,45 x 0,79
AL2CON01LE.TM
Page 109



Lotus console
1,53 x 0,57 x 0,78
ALTTOU01LE.SE



Louis XV console
1,13 x 0,38 x 0,82
ALXVCON02CA



Macau console
1,30 x 0,35 x 0,82
AC2201Z



Majestic console
1,60 x 0,45 x 0,85
23070C.FMC.SF.PD



Matisse console
1,40 x 0,39 x 0,85
15035C



Rincões II console
1,55 x 0,30 x 0,85
ARCCON02CA
Page 93



Rincões console
1,05 x 0,30 x 0,85
AC3034Z



Vitoria console
1,60 x 0,48 x 0,86
AC3111Z



Canova sofa
1,72 x 0,80 x 0,85
AMD.SOF042.TC
Page 65



Florence sofa
2,40 x 0,90 x 1,15
AMD.SOF501.TC



Gala sofa
1,40 x 0,76 x 0,88
AMD.SOF011.TC



George sofa
2,50 x 1,00 x 0,90
AGESOF01CE.TC
Page 11, 73



Grace single sofa
1,03 x 0,93 x 0,89
AGRMPLO1CE.TC



James sofa
1,80 x 0,88 x 0,69
AJMSOF01CE.TC
Page 61





Louis XV sofa
2,26 x 0,85 x 0,94
ALXVSOF02LE.TC
Page 77



Maryland single sofa
1,00 x 1,07 x 0,74
AMLMPLO1CE.TC
Page 102



Maryland sofa
2,50 x 1,07 x 0,74
AMLSOF01CE.TC
Page 46, 102



Memory sofa
2,20 x 0,92 x 1,00
MD.SOF102.TC



Olivia chaise-longue
1,75 x 0,81 x 0,76
AOLCHLO1CE.TC
Page 74, 107



Charleston pouf
0,55 x 0,50 x 0,55
ACTPOU01.TC
Page 35



Annelo armchair
0,72 x 0,79 x 1,02
AC3239.TC
Page 93



Baroque armchair
0,72 x 0,62 x 0,99
20098.TC
Page 49



Bourbon armchair
0,74 x 0,84 x 0,94
29303.TC
Page 71, 99



Claire armchair
0,82 x 0,81 x 0,85
ACLMAP01CE.TC



Dalila armchair
0,64 x 0,68 x 0,80
AC3413EC.TC
Page 63



Louis XV armchair
0,80 x 0,68 x 0,97
AC3109.TC
Page 37



Louis XV armchair
0,70 x 0,67 x 0,96
AC3025.TC



Louis XVI armchair
0,63 x 0,60 x 0,97
AC3222.PC
Page 22



Nina armchair
1,05 x 0,81 x 0,82
YBG.0001.TC



Tamara armchair
0,77 x 0,83 x 0,98
AMD.SOF0100.TC
Page 15



Tulip armchair
0,64 x 0,68 x 0,80
40001.TC



Viena armchair
0,75 x 0,65 x 0,86
AC3108.TC
Page 34, 43



Zora armchair
0,75 x 0,75 x 0,90
AZOCDR02LE.TC
Page 27, 109



Florence coffee table
1,30 x 0,80 x 0,40
30067



Francis coffee table
1,20 x 1,20 x 0,43
24067



Gala coffee table
1,00 x 1,00 x 0,40
13073.ST
Page 26





Galo coffee table
1,07 x 1,07 x 0,42
AC3200



Goya coffee table
1,00 x 1,00 x 0,40
AC3325TCA.LAC



Henri coffee table
1,10 x 0,80 x 0,45
AHRMCR01LE.TM
Page 12



Hera coffee table
1,20 x 1,20 x 0,40
29106CN



Lotus coffee table
1,30 x 0,80 x 0,40
40067.NC



Magnus coffee table
1,50 x 0,80 x 0,45
AMGMCR01CA
Page 102



Sabine coffee table
1,50 x 0,80 x 0,45
ASBMCR01CE
Page 47, 71



Caroline side table
0,50 x 0,50 x 0,50
ACAMAP01LE
Page 38



Charlotte II side table
0,64 x 0,50 x 0,65
ACHAGUE02LE
Page 73



Charlotte side table
0,64 x 0,50 x 0,73
AC3099 + AC3099.1



Charme side table
0,65 x 0,65 x 0,70
ACMGUE02CE
Page 13



Florence side table
0,60 x 0,60 x 0,64
30068



Florence side table
0,70 x 0,70 x 0,64
30022
Page 51



Gala side table
0,60 x 0,60 x 0,64
13068



Goya side table
0,62 x 0,62 x 0,60
AC3308TCEC



Henri side table
0,65 x 0,55 x 0,65
AHRMAP01LE.TM
Page 11



Hera side table
0,62 x 0,62 x 0,60
29107CN



Jade side table
0,60 x 0,40 x 0,60
AJAGUE02LE
Page 36



Jakob side table
0,58 x 0,46 x 0,70
AC3402



Liberty trolley
0,77 x 0,47 x 0,78
ALYCCH02CE
Page 28



Lotus side table
0,60 x 0,60 x 0,62
40068.NC



Magnus side table
0,60 x 0,60 x 0,60
AMGMAP01LE
Page 73



Opium side table
0,60 x 0,60 x 0,65
AOPGUE0301
Page 46



Opium side table
Ø 0,65 x 0,65
17088.1



Sabine side table
0,50 x 0,50 x 0,61
ASBMAP01CE
Page 15



Tango side table
Ø 0,72 x 0,65
17014



Tango side table
0,72 x 0,72 x 0,65
ATGGUE02CA
Page 99





Vermont side table
0,65 x 0,65 x 0,70
AVEGUE02LE
Page 65



Jacques column
0,55 x 0,40 x 0,90
AJQCOLO1CA
Page 13, 104



Francis tv unit
2,26 x 0,52 x 0,51
24074



Gala tv unit
2,25 x 0,51 x 0,50
13074.N



Gala tv unit
1,50 x 0,51 x 0,60
13071CA



Baviera bookcase
3,15 x 0,48 x 2,22
D7002C.LAC.1



Florence dining table
1,80 (0,45) x 1,00 x 0,78
30062



Gala dining table
2,00 (2,00x0,50) x 1,10 x 0,78
13065



Lotus II dining table
2,45 x 1,15 x 0,74
AL2MJT01CE
Page 69



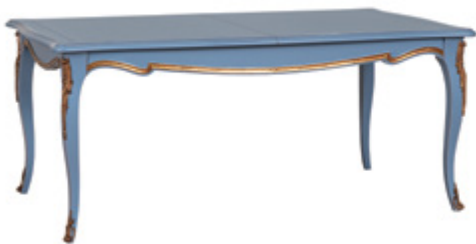
Lotus dining table
1,95 (2,56) x 1,15 x 0,78
ALTMJT0109



Louis XV dining table
1,20 x 1,20 x 0,78
AC3097Z
Page 16



Majestic dining table
1,80 (2,00x0,42) x 1,10 x 0,78
23066C



Majestic Gold dining table
1,80 x 1,10 x 0,78
23062C.FD
Page 79



Opium dining table
1,30 x 1,30 x 0,78
17020TCA.LAC
Page 55, 105





Camilla chair
0,54 x 0,63 x 0,95
ACAMCADO1CA.TC
Page 105



Florence chair
0,54 x 0,60 x 0,83
30059.TC



Francis chair
0,54 x 0,53 x 1,01
26002C.TC
Page 55



Francis chair
0,54 x 0,53 x 1,01
26002CA.2.PC



Gala chair
0,52 x 0,52 x 1,01
13069.TC
Page 33



Gala chair
0,52 x 0,48 x 0,98
13059CA.TC
Page 97



Louis XV chair
0,54 x 0,56 x 1,10
AC3106.TC
Page 16, 91



Louis XV chair
0,53 x 0,56 x 1,10
AC6153.TC



Louis XVI chair
0,51 x 0,50 x 0,98
23101.TC
Page 28



Louis XVI chair
0,48 x 0,47 x 0,93
AC3227.PC
Page 23



Louis XVI bar chair
0,45 x 0,42 x 1,25
23100.TC



Majestic chair
0,54 x 0,55 x 1,03
23059.TC



Suzanne chair
0,54 x 0,57 x 1,08
AC3330.TC
Page 16, 69



Brasil revolving chair
0,54 x 0,54 x 0,95
6613C



Gala revolving chair
0,59 x 0,51 x 0,84
13043CA.PC



Margaret revolving chair
0,63 x 0,72 x 0,99
AMTCDR01.PC



Adonis sideboard
1,82 x 0,40 x 0,84
AADAPA01CE
Page 43



Adonis sideboard
1,50 x 0,41 x 0,84
17006CA



Florence sideboard
1,86 x 0,54 x 0,96
30050



Gala sideboard
1,76 x 0,55 x 0,95
13050



Lotus sideboard
1,75 x 0,53 x 0,95
ALTAPA0209



Louis XV sideboard
1,95 x 0,56 x 0,95
AC3213





Louis XV sideboard

1,75 x 0,55 x 0,95
AC6150Y
Page 19



Majestic sideboard

1,85 x 0,60 x 0,95
23051C.FMC.SF.PD



Lotus bar cabinet

0,91 x 0,46 x 1,55
AL2MVB01LE



Lotus bar cabinet

1,20 x 0,45 x 1,60
ALTMVB0109



Mandarin bar cabinet

1,19 x 0,47 x 1,59
17007.D



Oriental cabinet

1,20 x 0,45 x 1,60
AC3061Z



Oriental bar cabinet

1,20 x 0,45 x 1,60
AORMVB03LE
Page 12



Eleanor showcase

2,01 x 0,46 x 2,01
AELVIT01LE
Page 16



Florence showcase

1,64 x 0,46 x 2,20
30054



Gala showcase

0,92 x 0,46 x 2,00
13052D.1



Harold showcase

1,44 x 0,51 x 2,11
AHDVIT01LE
Page 107



Lotus showcase

0,92 x 0,48 x 2,00
ALTVIT01LE



Louis XV showcase
1,80 x 0,56 x 2,30
AC6152Y



Louis XV showcase
1,94 x 0,51 x 2,25
AC6147
Page 65



Louis XV showcase
1,07 x 0,52 x 2,00
ALXVVIT04LE
Page 56



Majestic showcase
1,09 x 0,52 x 2,01
23052C.FMC.SF.PD



Normandie showcase
1,97 x 0,49 x 2,20
AC3073Z
Page 22



Pompadour showcase
0,85 x 0,42 x 1,85
AC3211Z



Primrose showcase
1,88 x 0,46 x 2,20
APMVIT01LE
Page 105



France desk
1,00 x 0,54 x 1,13
AC3079Z
Page 59



Louis XV desk
1,58 x 0,78 x 0,79
AC3091C.PC
Page 91



Louis XVI desk
1,50 x 0,75 x 0,78
AC3221.PC
Page 23





Oriente desk
1,50 x 0,75 x 0,78
6501C.PC
Page 96



Pompadour desk
0,75 x 0,41 x 1,34
AC3098.PC
Page 84



Gala bed
1,96(1,80 x 2,00) x 2,15 x 1,52
AGLCAM01LE.TC
Page 61



Gala bed
2,08(1,80 x 2,00) x 1,91 x 1,30
AGLCAM02LE.TC
Page 110



Gala bed
1,73 (1,60 x 2,00) x 2,13 x 1,47
13004E



Juliette bed
2,12(1,80 x 2,00) x 1,89 x 1,35
AJUCAM02LE.TC
Page 36



Lotus bed
2,09 x 2,12 x 1,33
ALTCAM01LE.TC



Majestic II bed
2,12(1,80 x 2,00) x 1,89 x 1,50
AMJ2CAM02LE.TC
Page 88



Majestic bed
2,10 (1,80 x 2,00) x 2,12 x 1,50
24005EC.TC



Matisse bed
1,21(1 x 1,90) x 2,02 x 1,40
15059E.LAC.TC
Page 83



Matisse bed
2,02 (1,80 x 2,00) x 1,97 x 1,40
AMACAM02LE.TC
Page 30



Adonis bedside table
0,60 x 0,38 x 0,66
25021



Dalila bedside table
0,60 x 0,40 x 0,62
AC3214.2



Florence bedside table
0,65 x 0,39 x 0,73
30021.



Gala II bedside table
0,60 x 0,40 x 0,63
AGLCMI02LE
Page 110



Gala bedside table
0,60 x 0,40 x 0,63
13021



Lara bedside table
0,56 x 0,40 x 0,65
ALACMI02LE
Page 83



Lotus bedside table
0,58 x 0,42 x 0,70
ALTCMI0106



Majestic bedside table
0,60 x 0,40 x 0,61
23022C.FMC.SF.P



Majestic bedside table
0,60 x 0,40 x 0,61
23021C.FMC.SF.P



Majestic gold bedside table
0,60 x 0,40 x 0,61
23021C.FMC.P





Mareau bedside table
0,53 x 0,37 x 0,60
AMARCMIO2LE
Page 31



Gala chiffonier
0,77 x 0,50 x 1,37
13025



Adonis chest of drawers
1,00 x 0,50 x 0,91
AC3307.00000
Page 9



Adonis chest of drawers
1,30 x 0,52 x 0,90
25024



Bizet chest of drawers
0,90 x 0,50 x 0,86
AC6146 + AC6146.1



Dalila chest of drawers
1,30 x 0,52 x 0,91
AC3215.2



Dante chest of drawers
1,30 x 0,52 x 0,88
17012.D



Florence chest of drawers
1,35 x 0,53 x 0,92
30023



Gala chest of drawers
1,35 x 0,53 x 1,00
13028



Gala chest of drawers
1,35 x 0,53 x 0,85
13023



Gaudi chest of drawers
1,35 x 0,52 x 0,89
29105NLAC.D



Lille chest of drawers
1,50 x 0,55 x 0,85
29109C
Page 55



Lotus chest of drawers
1,32 x 0,52 x 0,93
ALTCOM0106



Louis XV chest of drawers
0,80 x 0,45 x 0,70
ALXVCOM03CE.TM
Page 60



Louis XV chest of drawers
1,50 x 0,55 x 1,12
ALXVCOM02CE
Page 41



Louis XIV chest of drawers
1,30 x 0,53 x 1,00
AC3048.CA
Page 49, 114



Majestic chest of drawers
1,32 x 0,54 x 0,88
23024C.FMC.SF.P



Majestic Gold chest of drawers
1,32 x 0,54 x 0,88
AC3488TC.CALAC



Parati chest of drawers
0,90 x 0,50 x 0,92
AC3218Z + AC3093.3



Parati chest of drawers
1,30 x 0,49 x 0,92
APACOM02LE.TM
Page 23



Versalhes chest of drawers
1,29 x 0,60 x 0,86
AC3085Z
Page 80





Gala dressing table
1,60 x 0,42 x 1,52
13020



Lotus dressing table
1,20 x 1,40 x 0,73
ALTOU01LE.SE + ALTESPTOU01LE



Florence bench
1,54 x 0,52 x 0,48
30019.TC



Louis XV bench
0,54 x 0,40 x 0,51
AC3414.2.TC
Page 46



Louis XV bench
0,54 x 0,46 x 0,51
AC3414.TC



Louis XV bench
0,42 x 0,80 x 0,45
ALXVBQT02CE.TC
Page 36



Louis XV bench
0,70 x 0,62 x 0,48
ALXVBQT03LE.TC



Lotus bench
1,57 x 0,55 x 0,49
ALBQT01LE.TC



Tamara bench
0,77 x 0,62 x 0,48
AMD.SOF0101.TC



Vogue bench
1,10 x 0,45 x 0,48
AVGBQT02LE.TC
Page 111



Vogue bench
1,51 x 0,56 x 0,48
29226.TC



Gala wardrobe
2,21 x 0,61 x 2,30
13031



Isadora wardrobe
2,60 x 0,72 x 2,22
AISROU01LE
Page 31



Aramis bed
2,05 ↑(1,90x0,90) ↓(1,90x0,90) x 1,01 x 0,95
12002.1



Aramis bookcase
0,95 x 0,45 x 1,95
12045



Aramis chiffonnier
0,65 x 0,42 x 1,20
12043



Aramis desk
1,25 x 0,60 x 0,84
12041



Aramis wardrobe
1,20 x 0,65 x 1,95
12018





Cabide hanger
0,50 x 0,38 x 1,04
AC3027



Lawrence hanger
0,47 x 0,37 x 1,45
ALWCBD01CE
Page 41



Picasso hanger
0,95 x 0,50 x 2,12
AC3350



Piccadilly hanger
0,97 x 0,18 x 1,95
APYCBD01LE.ES



Brasil lamp
0,50 x 0,50 x 1,50
6610C + 0111.AJ5220



Dalila mirror
1,00 x 0,03 x 1,94
11726



Florence mirror
ø 1,00 x 0,03
30034



Gala mirror
1,20 x 0,03 x 0,72
13034



Lotus mirror
1,29 x 0,04 x 0,70
ALTESPTOU01LE



Alba
Simples
Oak wood



AM
Aged with dust
Cherry wood



Amber
Aged with dust
Cherry wood



Carvalho
Simples
Oak wood



Cerejeira natural
Antique
Cherry wood



Cherry
Antique
Cherry wood



Mornata
Aged with dust
Oak wood



Paris antiquário
Cherry wood



Verona
Aged with dust
Cherry wood



Walnut
Simples
Walnut wood





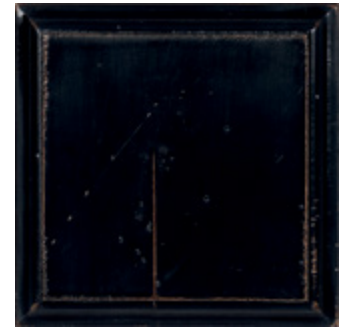
Amaretto
Simple



Anchor
Antique



Ardoise
Antique



Black
Aged with dust



Bluebell
Antique



Blush
Simple



Chinoise
Antique



Coco
Simple



Coldgrey
Simple



Dusty pink
Antique



Green
Simple



Gris
Simple



Khaki
Antique



Light Rose
Simple



Maroon
Antique



Nigra
Aged with dust



Rose
Antique



Sepia
Antique



Tan
Antique



Teal
Simple



Terra
Antique



Terracotta
Antique



White patine
Aged with dust

Finishes

Using traditional techniques, AM Living classic collection finishes highlight wood's natural attributes while adding a touch of history to each piece.





Siena
Simple



Siena
Antique



Siena
Aged with dust



Coldgrey
Simple



Coldgrey
Antique



Coldgrey
Aged with dust

Simple

Focuses on the natural attributes of a chosen lacquer, displaying eroded corners.

Antique

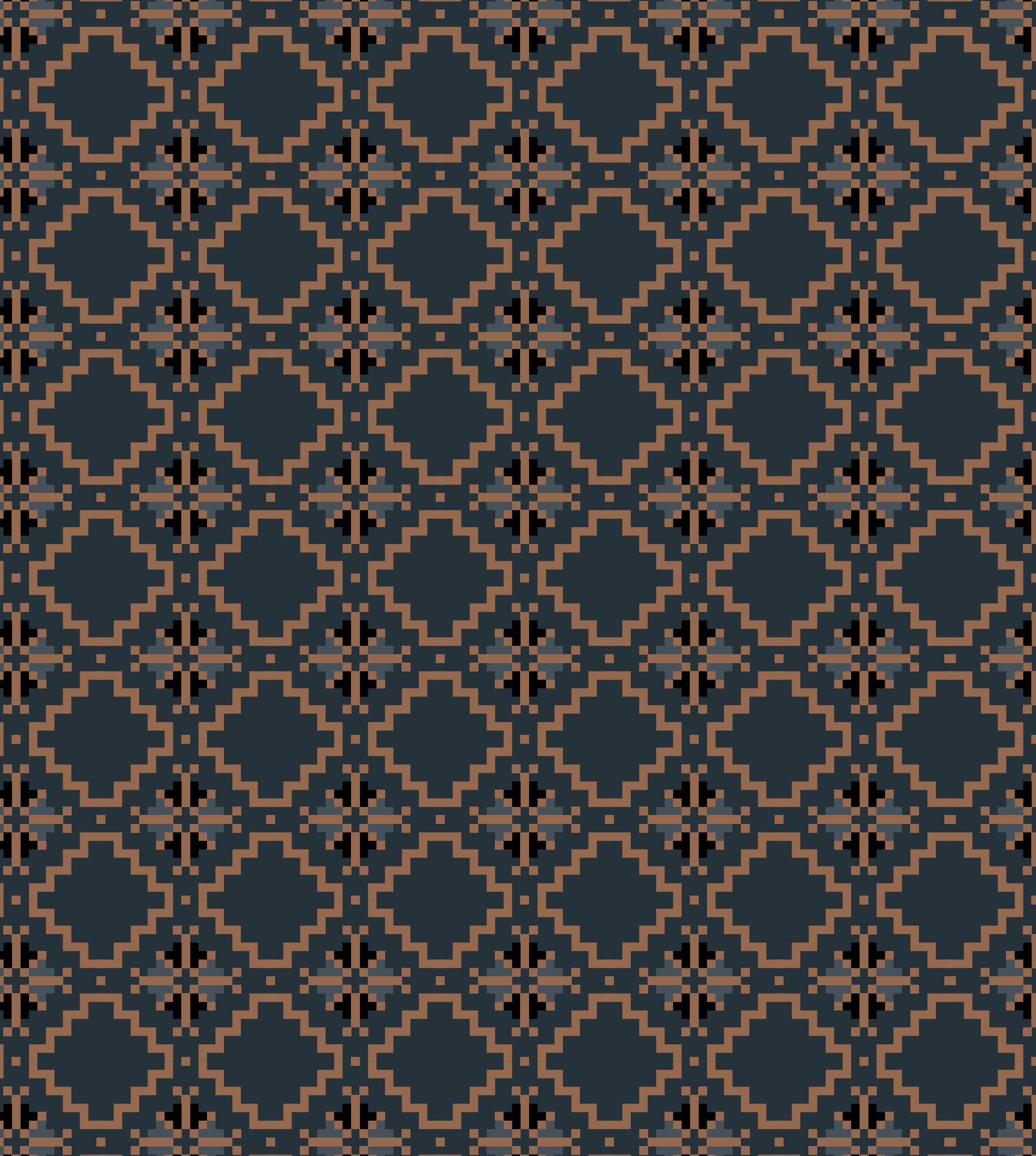
The in-between solution for those who enjoy maintaining the natural attributes of a color, while adding a softer aging effect.

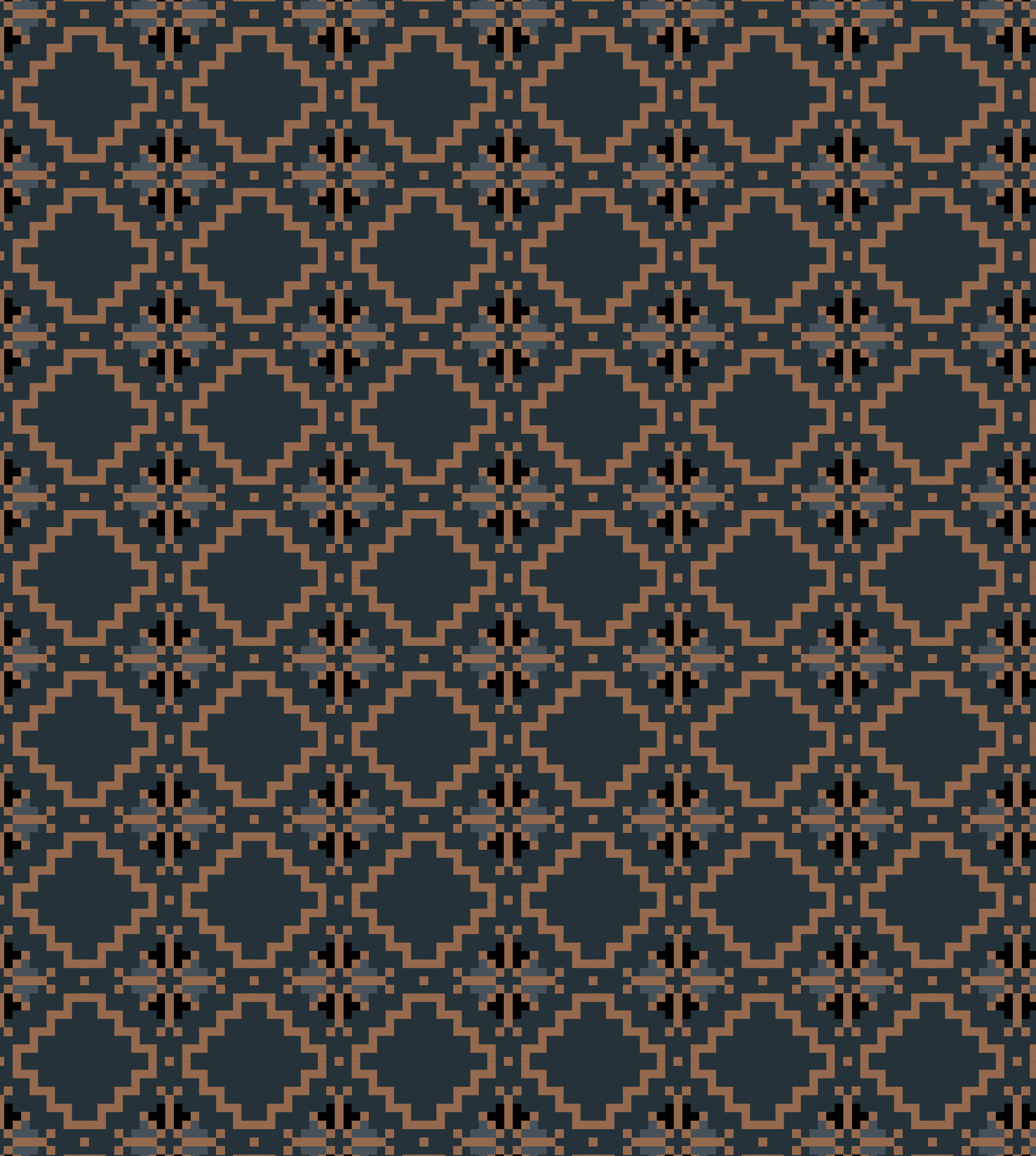
Aged with dust

Reflects the classical tradition of wood aging, using eroding and distressing techniques, adding tears and marks that bring a vintage touch to your piece.

Catalogs and price lists are subject to revisions and may suffer alterations, for that reason, make sure you are accessing the latest version by always using the link www.amfurnituregroup.com/AM-Living-Classic-Collection-Catalog.pdf. Except for typo or misprint, the charged prices and the information provided will always correspond to the updated version of the online file. Product availability is subject to stock availability or production capacity. Last update: 01/02/2022.

Design: Atelier Nunes e Pã
Storyteller: Alexandra Martins
Concept and Art Director: Carlos Alexandre Santos
Interior photography: António Chaves
Acknowledgements: Empatias - Decoração de Interiores
All rights reserved to AMLiving - AMfurniture Group







Cofinanciado por:



UNIÃO EUROPEIA
Fundo Europeu
de Desenvolvimento Regional

WWW.AMLIVING.COM