

indoor

Nude indoor Rectangular dining table / mesa rectangular

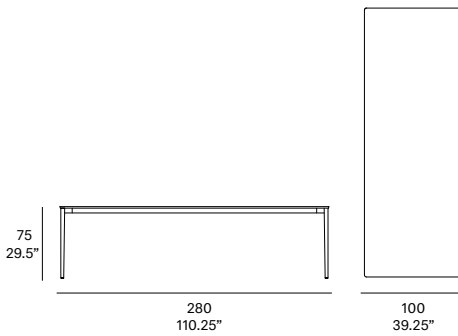
Studio expormim, 2021

T620 280



Structure made of stainless steel tube, finished with polyester powder. The tabletop is available in European oak veneer top and lacquered top version (MDF). Tabletop thickness: 12 mm/0.47" thick. Delivered unassembled.

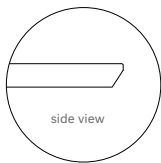
Estructura fabricada en tubo de acero inoxidable, acabado en pintura de polvo de poliéster. La tapa de la mesa está disponible en tablero chapado de roble europeo y en versión lacada (MDF). Espesor del tablero: 12 mm. Se sirven desmontadas.



Shipment details

Qty	1 dining table (1 box)
Volume	0,30 m ³ / 1054 ft ³
Gross weight	87 kg / 192 lb
Net weight	47 kg / 103.5 lb
Item dimensions (width x depth x height)	280 x 100 x 75 cm 110.25" x 39.25" x 29.5"

Tabletop options:



- veneered top 12 mm/0.47" thick.
- lacquered top 12 mm/0.47" thick.

expormim

Expormim S.A.
Pol. Ind. Jaime I
46640 Moixent (Valencia) Spain
+34 962 295 144/5
export@expormim.com
www.expormim.com

Expormim USA LLC
(212) 204-8572
usa@expormim.com
www.expormim.com

1/3

indoor

Tabletop / tapa de mesa

veneered / contrachapado



W01 natural oak



W03 light oak



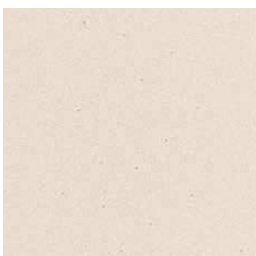
W02 white stained



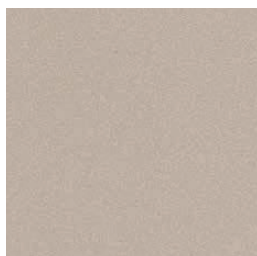
W05 dark stained

textured lacquers

Lacquered top (MDF) / tapa lacada (MDF)



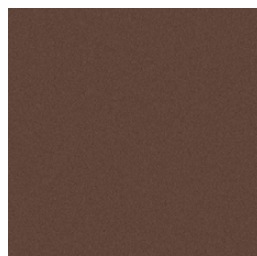
LT24 linen



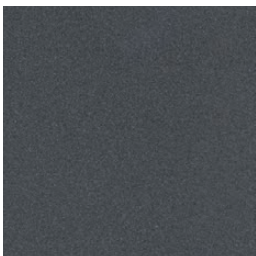
LT09 champagne



LT10 bronze



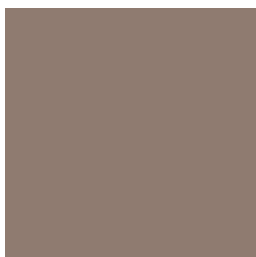
LT26 sable brown



LT11 graphite

lacquers

Lacquered top (MDF) / tapa lacada (MDF)



L5 taupe

indoor

Legs / patas

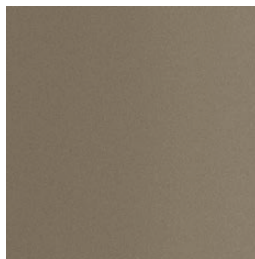
metallic finishes- fine textured



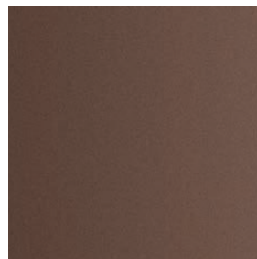
124 FT linen



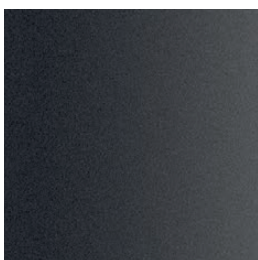
102 FT light grey



110 FT bronze



108 FT oxide



111 FT graphite