

outdoor

Talo outdoor

Rectangular dining table / mesa rectangular

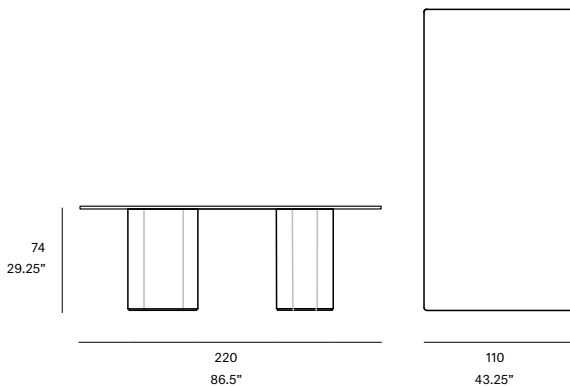
Altherr Désile Park, 2022

C700 220

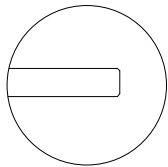


Dining table with UHPC concrete base made up of natural mineral components and organic fibers (non-metallic), which ensure exceptional resistance to weathering. Tabletop options: HPL Trespa® 13 mm/0.51" thick, FENIX NTM® 12 mm/0.47" thick and Dekton® 12 mm/0.47" thick. Delivered unassembled.

Mesa de comedor con estructura de hormigón UHPC compuesto por una mezcla de componentes minerales naturales y fibras orgánicas (no metálicas) que aseguran una excepcional resistencia a la intemperie. Opciones de tablero: HPL Trespa® de 13 mm, FENIX NTM® de 12 mm y Dekton® de 12 mm. Se sirven desmontadas.



Tabletop options:



- HPL Trespa® 13 mm/0.51" thick.
- FENIX NTM® 12 mm/0.47" thick.
- Dekton® 12 mm/0.47" thick.

Shipment details

Qty 1 dining table (2 boxes)
Volume 0,90 m³ / 27.5 ft³

HPL / FENIX NTM® Top option

Gross weight 254 kg / 560 lb
Net weight 180 kg / 397 lb

Dekton® Top option

Gross weight 299 kg / 659 lb
Net weight 225 kg / 496 lb

Item dimensions

(width x depth x height) 220 x 110 x 75 cm
86.5" x 43.25" x 29.5"

HEAVY FURNITURE

expormim

Expormim S.A.
Pol. Ind. Jaime I
46640 Moixent (Valencia) Spain
+34 962 295 144/5
export@expormim.com
www.expormim.com

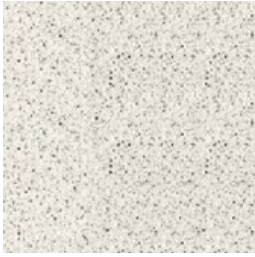
Expormim USA LLC
(212) 204-8572
usa@expormim.com
www.expormim.com

1/4

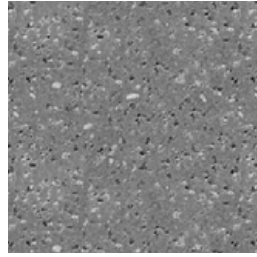
outdoor

frame / estructura

UHPC concrete



C1 stone



C2 slate



C3 terracotta

outdoor

top / tapa

HPL Trespa® - premium



320 silver quartzite - matt



323 natural chalkstone - matt

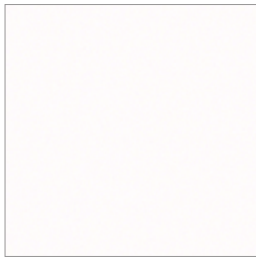


327 titanium bronze - satin



321 italian slate - matt

FENIX NTM®



029 bianco male



720 nero ingo

Dekton® - kraftizen



K1 albarium



K2 argentium



K3 umber

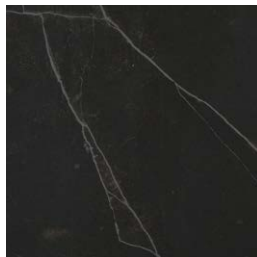


K4 micron

Dekton® - natural



D3 danae



D2 kelya

expormim

Expormim S.A.
Pol. Ind. Jaime I
46640 Moixent (Valencia) Spain
+34 962 295 144/5
export@expormim.com
www.expormim.com

Expormim USA LLC
(212) 204-8572
usa@expormim.com
www.expormim.com

3/4

Maintenance and general use. Outdoor

UHPC concrete



Important: read carefully and keep for future enquiries

Importante: lea atentamente y conserve este documento para futuras consultas

Advisory: Expormim S.A. will not assume any responsibility for damages due to normal wear or improper use of the product.

Advertencia: Expormim S.A. no se hará responsable de los daños que se produzcan como resultado del desgaste habitual o del uso inadecuado del producto.

Due to the handmade nature of this material large slub yarns may run sporadically throughout the surface. These slubs are not to be interpreted as imperfections, but as part of the natural character of the material.

Debido a la naturaleza artesanal de este material, esporádicamente pueden aparecer grandes flameados por la superficie. Estos flameados no deben interpretarse como imperfecciones, sino como parte del carácter natural del material.



Talo collection details