

ORIGIN

SQUARE COFFEE TABLE

REF.: 79153



Materials

Powder coated aluminium frame available in Cream 34 and Grey 56. Top in aluminium, porcelain or compact.

Dimensions

Length x width x height:

103 x 94 x 30,5 cm./ 40.6 x 37 x 12 in.

Weight aluminium table top: 22,8 Kg/ 50.3 lb.

Weight porcelain table top: 42,2 Kg/ 93.1 lb.

Weight compact HPL table top: 29 Kg/ 63.9 lb.

Volum: 0,40 m³.

Finish

Powder coated aluminium

Colour:

Grey
met. 56



Cream 34



Porcelain

Colour:

Natural
white 81



Lava
grey 82



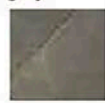
Veined off
white. 85



Basalt
grey 86



Ochre
grey 87



HPL

Colour:

Beige



Black



Marbled
white



Wood



Solid
taupe



Solid
white



Fecha: 10-11-2022