

Gatsby doble_base ø35x73cm s50

by Ramón Esteve

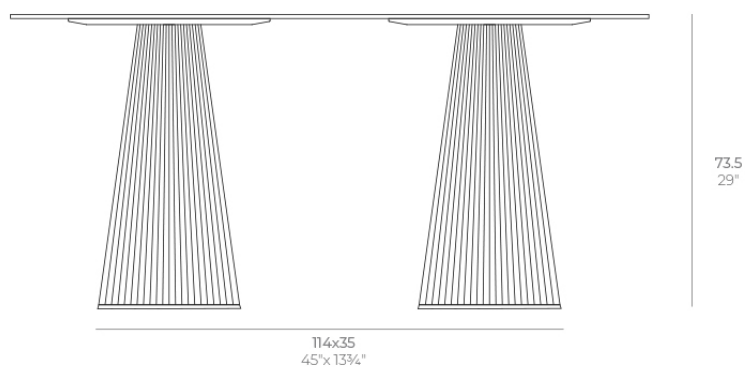
The Gatsby collection, designed by Ramón Esteve, evokes the elegance and glamour of Art Deco, reminding us of the Roaring Twenties. Inspired by the bonanza, parties and excesses of that era, Gatsby combines intricate design with extraordinary simplicity, reflecting the American dream.



Info

Description

Weight: 8.4 Kg



GATSBY Mesa Doble Base Redonda 114x35cm S50
GATSBY Round Double Base Table 114x35cm S50
ref. 54465

TABLE TOP - SOBRE



158X79 cm
62 1/4" x 31"

Finishes

finishes

BASIC

Ref. 54465



white 2001



ecru 2003



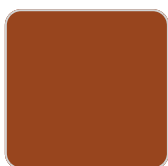
tortora 2004



cream 2017



camel 2020



clay 2022



garnet 2015



brown 2008



green 2016



blue 2018



gray 2005



anthracite 2006



black 2002



ecru granite



cream granite



ice 2101

Matt Polyethylene

Ambients

