

indoor

Nude indoor Rectangular dining table / mesa rectangular

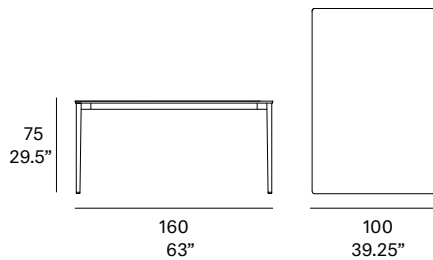
Studio expormim, 2021

T620 160



Structure made of stainless steel tube, finished with polyester powder. The tabletop is available in European oak veneer top and lacquered top version (MDF). Tabletop thickness: 12 mm/0.47" thick. Delivered unassembled.

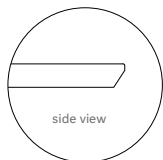
Estructura fabricada en tubo de acero inoxidable, acabado en pintura de polvo de poliéster. La tapa de la mesa está disponible en tablero chapado de roble europeo y en versión lacada (MDF). Espesor del tablero: 12 mm. Se sirven desmontadas.



Shipment details

Qty	1 dining table (1 box)
Volume	0,20 m ³ / 7.1 ft ³
Gross weight	40 kg / 88.2 lb
Net weight	25 kg / 55.1 lb
Item dimensions (width x depth x height)	160 x 100 x 75 cm 63" x 39.25" x 29.5"

Tabletop options:



- veneered top 12 mm/0.47" thick.

- lacquered top 12 mm/0.47" thick.

expormim

Expormim S.A.
Pol. Ind. Jaime I
46640 Moixent (Valencia) Spain
+34 962 295 144/5
export@expormim.com
www.expormim.com

Expormim USA LLC
(212) 204-8572
usa@expormim.com
www.expormim.com

1/7

indoor

Tabletop / tapa de mesa

veneered / contrachapado



W01 natural oak



W03 light oak



W02 white stained



W04 black stained

textured lacquers

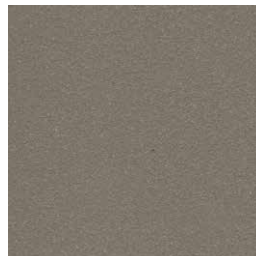
Lacquered top (MDF) / tapa lacada (MDF)



LT02 light grey



LT09 champagne



LT10 bronze



LT11 graphite

lacquers

Lacquered top (MDF) / tapa lacada (MDF)



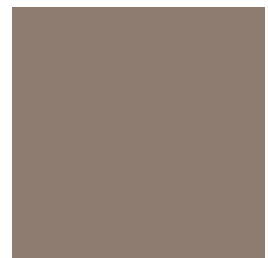
L17 forest green



L16 navy blue



L14 japanese red



L5 taupe

indoor

Legs / patas

Metallic finishes / metales



102 FT light grey
fine textured



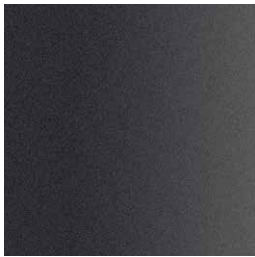
109 FT champagne
fine textured



110 FT bronze
fine textured



108 FT oxide
fine textured



111 FT graphite
fine textured