

outdoor

Talo outdoor

Hexagonal coffee / centro hexagonal

Altherr Désile Park, 2022

C708



UHPC concrete base made up of natural mineral components and organic fibers (non-metallic), which ensure exceptional resistance to weathering. Optional clear tempered glass top.

Estructura de cemento UHPC compuesto por una mezcla de componentes minerales naturales y fibras orgánicas (no metálicas) que aseguran una excepcional resistencia a la intemperie. Tapa opcional de cristal templado transparente.

Shipment details

Qty 1 coffee table (1 box)
Volume 0,10 m³ / 21.2 ft³

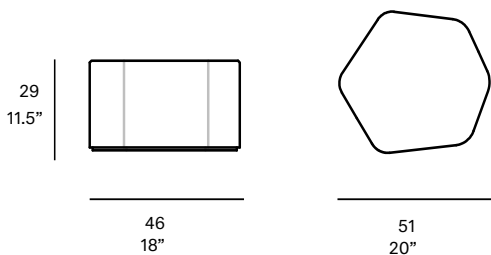
Without glass Top option

Gross weight 44 kg / 97 lb
Net weight 34 kg / 75 lb

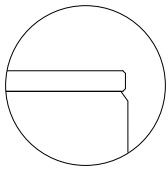
With glass Top option

Gross weight 47 kg / 104 lb
Net weight 37 kg / 82 lb

Item dimensions 46 x 51 x 29 cm
(width x depth x height) 18" x 20" x 11.5"



Optional tabletop:



- tempered glass top 6 mm/0.24" thick.

expormim

Expormim S.A.
Pol. Ind. Jaime I
46640 Moixent (Valencia) Spain
+34 962 295 144/5
export@expormim.com
www.expormim.com

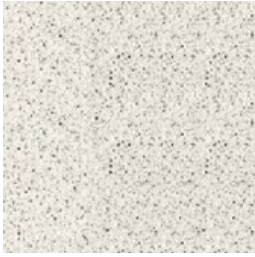
Expormim USA LLC
(212) 204-8572
usa@expormim.com
www.expormim.com

1/3

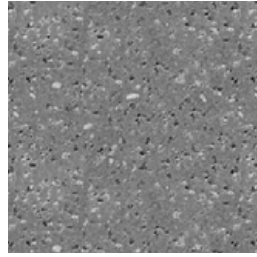
outdoor

concrete base

UHPC concrete



C1 stone



C2 slate



C3 terracotta

Maintenance and general use. Outdoor

UHPC concrete



Important: read carefully and keep for future enquiries

Importante: lea atentamente y conserve este documento para futuras consultas

Advisory: Expormim S.A. will not assume any responsibility for damages due to normal wear or improper use of the product.

Advertencia: Expormim S.A. no se hará responsable de los daños que se produzcan como resultado del desgaste habitual o del uso inadecuado del producto.

Due to the handmade nature of this material large slub yarns may run sporadically throughout the surface. These slubs are not to be interpreted as imperfections, but as part of the natural character of the material.

Debido a la naturaleza artesanal de este material, esporádicamente pueden aparecer grandes flameados por la superficie. Estos flameados no deben interpretarse como imperfecciones, sino como parte del carácter natural del material.



Talo collection details