

Products / Lounge Chairs / Vineyard Lounge Chair Legs

Vineyard lounge chair legs

by Ramón Esteve

Vineyard Collection, by Ramon Esteve, is an aluminium and wooden outdoor furniture collection with a rustic and warm style.



Info

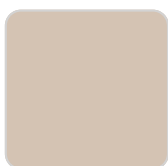
Description

Weight: 53.5 Kg

Finishes

finishes

ALUMINIUM
Ref. 54500ESU



crema



castoro fiber



bronze

Lacquered aluminium profile.

