

indoor

# Nude indoor Rectangular dining table / mesa rectangular

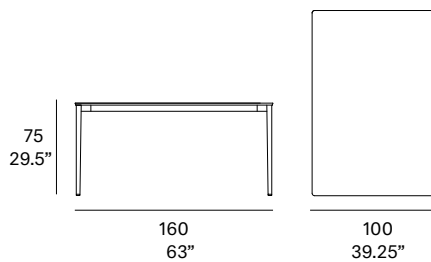
Studio expormim, 2021

T620 160



Structure made of stainless steel tube, finished with polyester powder. The tabletop is available in European oak veneer top and lacquered top version (MDF). Tabletop thickness: 12 mm/0.47" thick. Delivered unassembled.

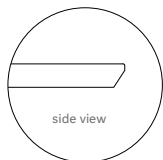
Estructura fabricada en tubo de acero inoxidable, acabado en pintura de polvo de poliéster. La tapa de la mesa está disponible en tablero chapado de roble europeo y en versión lacada (MDF). Espesor del tablero: 12 mm. Se sirven desmontadas.



## Shipment details

Qty	1 dining table (1 box)
Volume	0,17 m <sup>3</sup> / 6 ft <sup>3</sup>
Gross weight	53 kg / 117 lb
Net weight	29 kg / 64 lb
Item dimensions (width x depth x height)	160 x 100 x 75 cm 63" x 39.25" x 29.5"

Tabletop options:



- veneered top 12 mm/0.47" thick.

- lacquered top 12 mm/0.47" thick.

**expormim**

Expormim S.A.  
Pol. Ind. Jaime I  
46640 Moixent (Valencia) Spain  
+34 962 295 144/5  
export@expormim.com  
www.expormim.com

Expormim USA LLC  
(212) 204-8572  
usa@expormim.com  
www.expormim.com

1/3

indoor

**Tabletop / tapa de mesa**

**veneered / contrachapado**



W01 natural oak



W03 light oak



W02 white stained



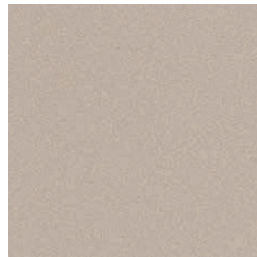
W05 dark stained

**textured lacquers**

Lacquered top (MDF) / tapa lacada (MDF)



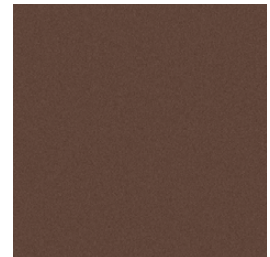
LT24 linen



LT09 champagne



LT10 bronze



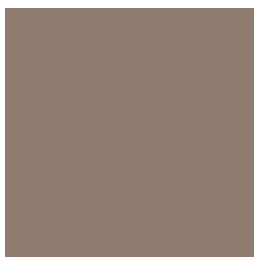
LT26 sable brown



LT11 graphite

**lacquers**

Lacquered top (MDF) / tapa lacada (MDF)



L5 taupe

**expormim**

Expormim S.A.  
Pol. Ind. Jaime I  
46640 Moixent (Valencia) Spain  
+34 962 295 144/5  
export@expormim.com  
www.expormim.com

Expormim USA LLC  
(212) 204-8572  
usa@expormim.com  
www.expormim.com

indoor

Legs / patas

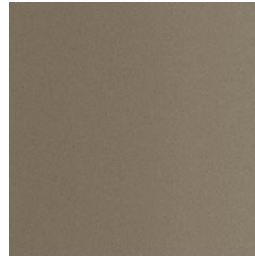
metallic finishes- fine textured



124 FT linen



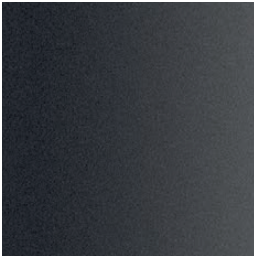
102 FT light grey



110 FT bronze



108 FT oxide



111 FT graphite