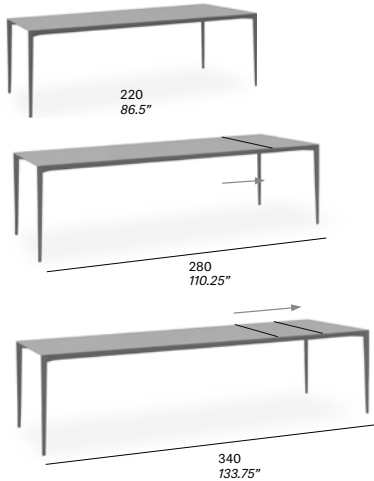


indoor

Nude indoor Rectangular expandable dining table / mesa rectangular extensible

Studio expormim, 2021

T628

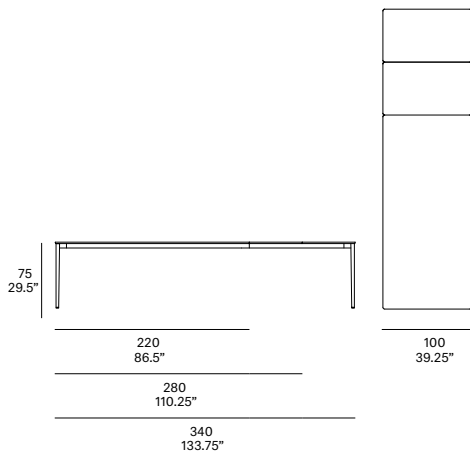


Structure made of stainless steel tube, finished with polyester powder. The tabletop is available in European oak veneer top and lacquered top version (MDF). Tabletop thickness: 19 mm/0.75" thick. Delivered unassembled.

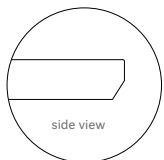
Estructura fabricada en tubo de acero inoxidable, acabado en pintura de polvo de poliéster. La tapa de la mesa está disponible en tablero chapado de roble europeo y en versión lacada (MDF). Espesor del tablero: 19 mm. Se sirven desmontadas.

Shipment details

Qty	1 dining table (1 box)
Volume	0,44 m ³ / 15.5 ft ³
Gross weight	106 kg / 233.5 lb
Net weight	63 kg / 139 lb
Item dimensions (width x depth x height)	220 x 100 x 75 cm 86.5" x 39.25" x 29.5"



Tabletop options:



- veneered top 19 mm/0.75" thick.
- lacquered top 19 mm/0.75" thick.

expormim

Expormim S.A.
Pol. Ind. Jaime I
46640 Moixent (Valencia) Spain
+34 962 295 144/5
export@expormim.com
www.expormim.com

Expormim USA LLC
(212) 204-8572
usa@expormim.com
www.expormim.com

1/3

indoor

Tabletop / tapa de mesa

veneered / contrachapado



W01 natural oak



W03 light oak



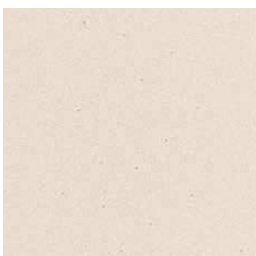
W02 white stained



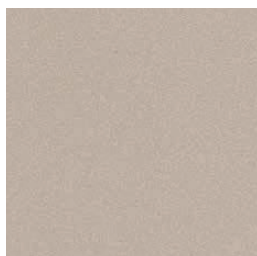
W05 dark stained

textured lacquers

Lacquered top (MDF) / tapa lacada (MDF)



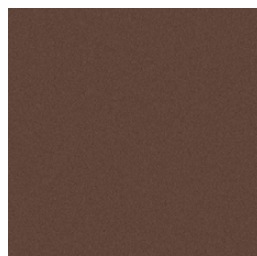
LT24 linen



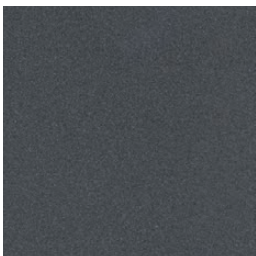
LT09 champagne



LT10 bronze



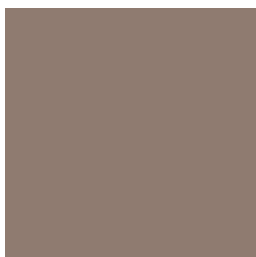
LT26 sable brown



LT11 graphite

lacquers

Lacquered top (MDF) / tapa lacada (MDF)



L5 taupe

indoor

Legs / patas

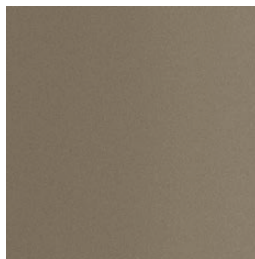
metallic finishes- fine textured



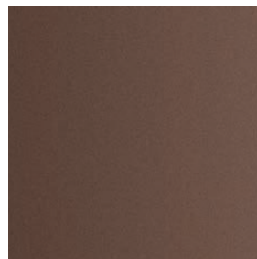
124 FT linen



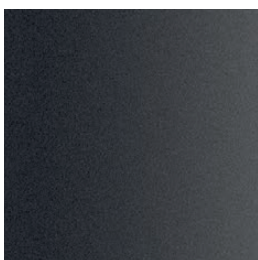
102 FT light grey



110 FT bronze



108 FT oxide



111 FT graphite