



M MOSAIC *factory*

CEMENT | ZELLIGE | TERRAZZO | GRANITO

Moulded Zellige clay cut into a “biscuit” prior to firing in our klin.





Who we are...

MOSAIC factory (Mosaic del Sur) is an industrial group specialising in the manufacture of custom tiles. Established in 2002, the group has 4 production sites in the Tangier Industrial Free Zone (Morocco) and 300 employees in production, control, logistics and customer service.

We offer cement and marble based products (Cement, Granito & Terrazzo) as well as natural clay tiles (Zellige).

With over 50,000 orders to date, our experience and the knowledge of our craftsmen help make our clients' creative ideas a reality.

Mosaic factory's R&D department thrives to improve the production machinery as well as manufacturing processes and techniques to continue delivering quality tiles and innovative products.

Our products are offered without any intermediaries (B to C) through our online shop, at our European showrooms or by contacting our customer service team who can assist clients in 9 languages.

International designers and architects repeatedly specify Mosaic factory tiles for their projects.



Production

Our tiles and slabs are “by nature” custom-made products, tailored to the needs and wants of architects, creators, designers and private customers who entrust us with their orders. The production lead time for bespoke projects is between 5 and 7 weeks. To simplify customisation, several simulators are available online.

For those projects that are urgent, our factory stock, with 15 000 m² of the most popular colours and designs, is available online and ready to ship.

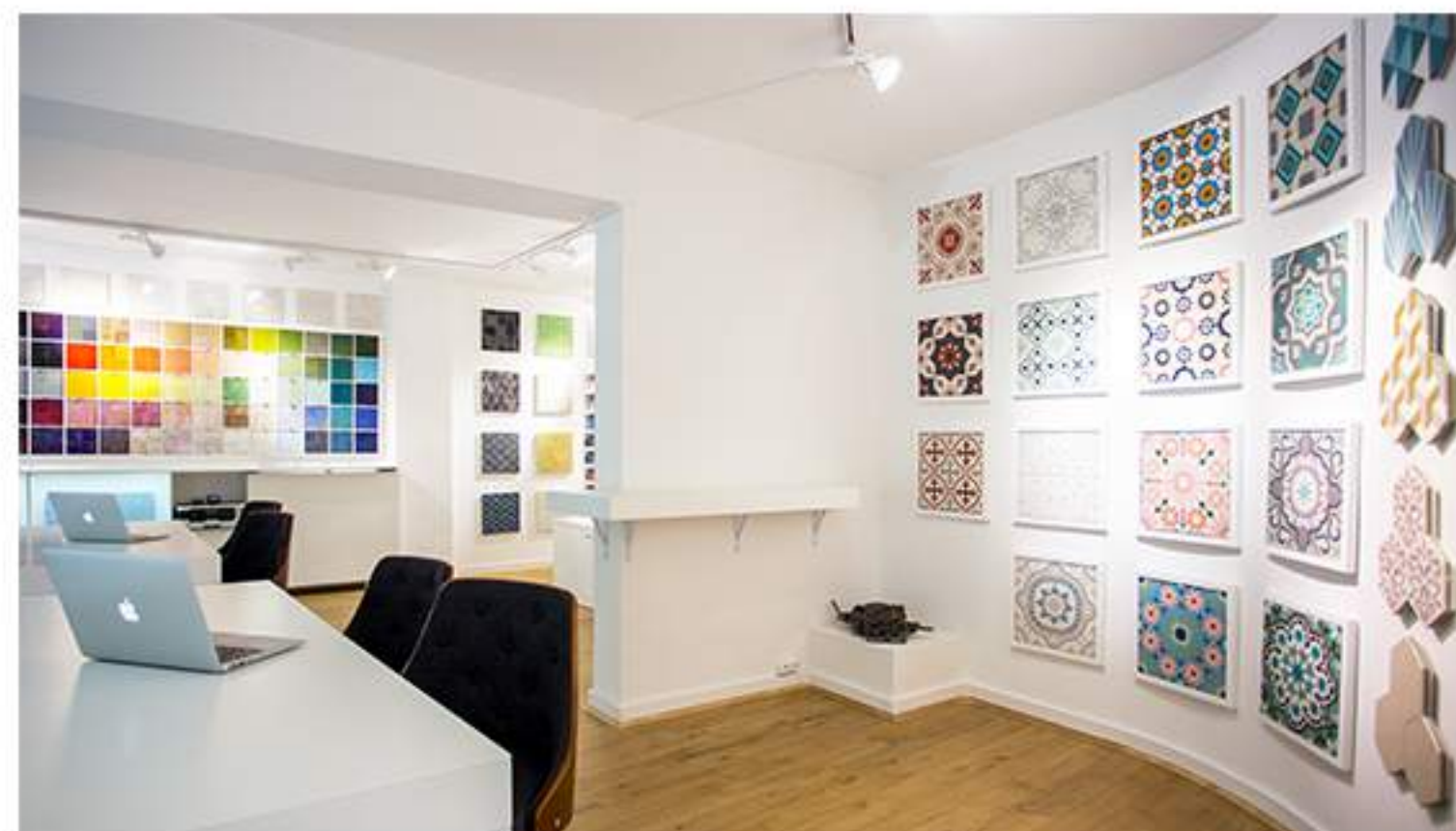
Zellige clay being hand-moulded before drying naturally in the Moroccan sun. 



Our showrooms

MOSAIC factory official showrooms display our range of products in London, Paris, Madrid and Málaga.

All our collections can be viewed and colour samples are available. If you are unable to visit, samples can be sent by UPS or DHL.



showroom Paris



showroom London



showroom Madrid



showroom Málaga






Cement tiles for commercial use



In 2002, MOSAIC factory started manufacturing encaustic cement tiles using the traditional handcrafted method. Year on year, we improved and modernised our production process to ensure ideal working conditions and good quality standards.

Cement tiles are made with cement pigments, marble powder and water, which are mixed, moulded and then pressed. The hardening, maturing and drying of the tiles is carried out naturally over a few weeks.

Cement patterned tiles have been used to create colourful floor and wall designs since the 19th century.

 **MOSAIC** factory *Wunderhaus*



Project: Wunderhaus cafe, Berlin - Top: Penta 20x20x7cm used on the floor - Bottom: Pattern 10789 used for the bar front

Project: Casa Decor temporary exhibition, Madrid – Left: Hexa Long Pattern HL122



Cement tiles can be manufactured in many different shapes, allowing for modern or traditional patterns. The organic feel and the custom nature make them an ideal element for decorating floors and walls in shops, restaurants and other commercial areas. The wear is minimal in high traffic areas and with correct maintenance, the tiles will last decades.

Crystallisation is recommended to increase protection of cement tile floors in commercial areas.



MOSAIC factory *Casa Decor*



MOSAIC factory *Café Colón*



Project : Cafe Colón, Madrid – Left: Hexagonal Patterns H106, H112 and H105 - Right: Pattern 10146



Hotel restaurant and bathroom area tiled with 20x23cm hexagonal tiles in a combination of 3 cement colours (GL, GPL & G2)



Our cement tiles have been used in bathrooms, showers, kitchens and restaurant areas. Like other porous materials, cement tiles will evolve with time, giving them more character. Like marble, regular cleaning with PH neutral products will help create a patina protecting the tiles against stains.

Pattern 10162 - Colours: LC, LF, GM, GF



Pattern H110 - Colours: B, GM, LM



Pattern 10105 - Colours B, LC, P8



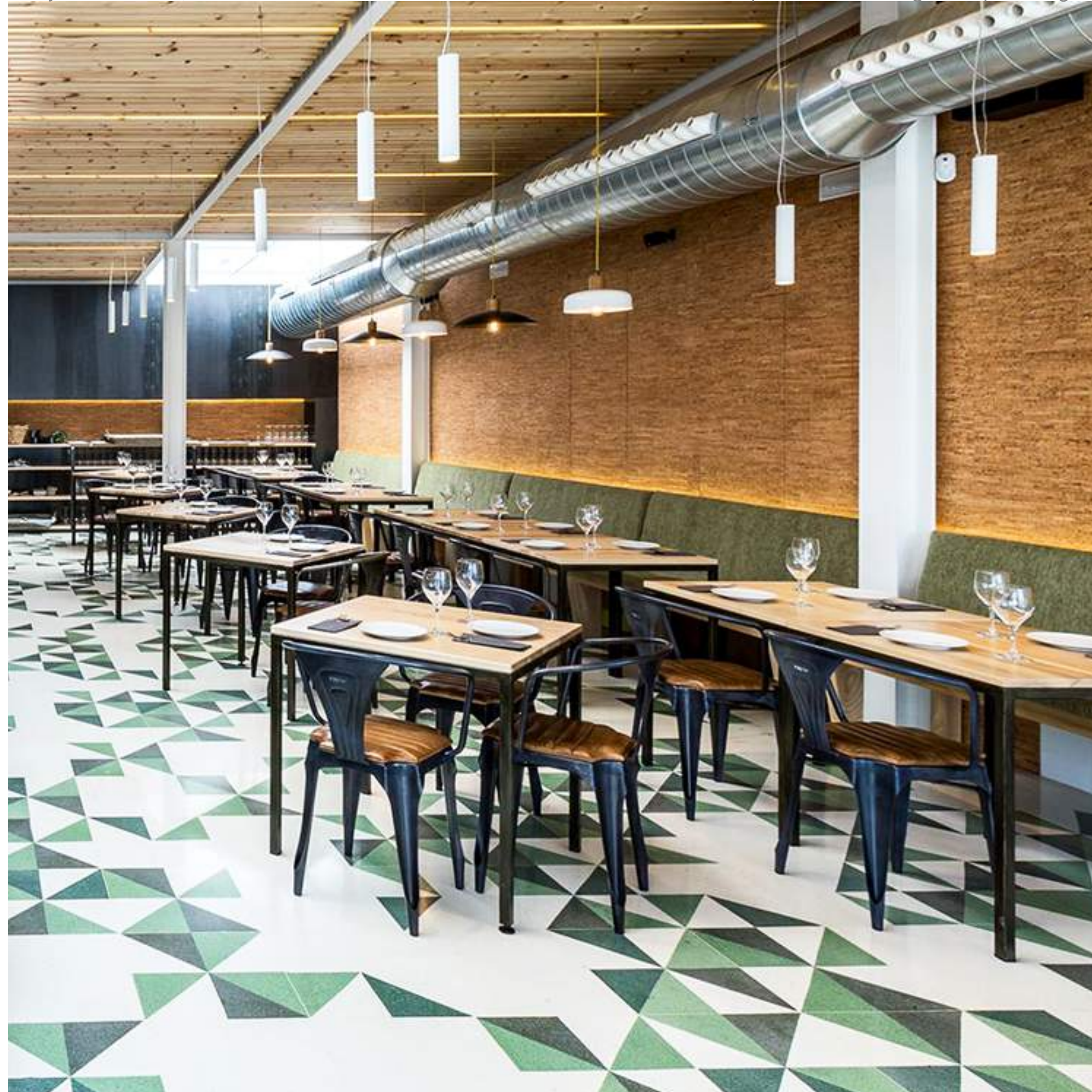
Zellige tiles used in the cafeteria (left) and hexagonal cement tiles reference H218 in the room feature wall of Malia Park Hotel.



With a production capacity of over 300 m2 per day, we are able to deliver high volume orders within reasonable lead times.

MOSAIC factory *Malia Park hotel*

Project: Sake Bar, London - Pattern 10433 in different colours combined with plain tiles creating a unique design.



 **MOSAIC**factory *Sake Bar*



Granito tiles for commercial use



Granito tiles are fine grain terrazzo, allowing for many patterns and designs.

The pigmented cement surface layer is reinforced by adding fine glass or marble aggregates. Granito tiles were created for clients looking for a very strong and durable product.


Highly resistant to abrasion, these tiles can be polished to restore aged and damaged floors back to their original beauty. Granito tile floors are recommended in heavy traffic areas.

Project: Yocto Cafe, Paris - Pattern 10695 used on the floor, wall and ceiling.





Project: El Imparcial Restaurant,
Madrid - Patterns 10369 and 70915.

 **MOSAIC**factory *El Imparcial*



Modern or traditional Granito tile designs can be used to decorate walls and floors. In high traffic areas, the tiles can be crystallised for further protection and to give a shiny finish.



Terrazzo tiles for commercial use

MOSAIC Factory manufactures a wide range of customisable Terrazzo tiles, in various sizes and shapes, for floors and walls.



MOSAIC factory *Matcha & Beyond*





Trendy Terrazzo Pattern tiles used on floor and counter front.



Terrazzo is made with marble, brass or coloured glass elements, placed into a liquid pigmented cement base. Upon completion of the hardening stage, polishing will reveal the beauty of the decorative chips. Lightweight, easy to install and durable, Terrazzo tiles are manufactured in 5 to 6 weeks, in thicknesses ranging from 14 to 20mm.

We can manufacture custom terrazzo to suit your needs.

Terrazzo tiles with large pieces of marble in different colours. Each tile is unique.



MOSAIC factory *Otaduy Novias*



Zellige tiles for commercial use

Zellige tiles were traditionally used to decorate walls and floors around the Mediterranean and in the Middle East. Each Zellige tile is unique with a pearlescent, semi-transparent and irregular surface finish.



Project: Les Nereides, Paris - 5x5cm Zellige tiles in colour 1019, used on the floor of this jewellery shop.

 **MOSAIC** factory *Les Nereides*



Left: 10x10cm Zellige tiles used on the walls and counter top, Fishbone 5x15cm tiles used on the floor - Right: Kitchen feature wall in Zellige 10x10cm.

Zellige tiles offer great options to give character to a wall, splashback, counter or display.



MOSAIC factory *Zellige*

What is Zellige? Zellige tiles are traditionally handcrafted with non-refined natural clay extracted from the Fez region in Morocco. The clay is kneaded with water, moulded by hand, dried naturally and fired in a klin. Glass enamel is then applied to the surface of the raw tile called “biscuit” , in multiple semi-transparent shades creating a pearlescent, metallic, volcanic or opaque finish.



Bar front and splashback covered with Fish Large tiles, one of our classic Zellige shapes.



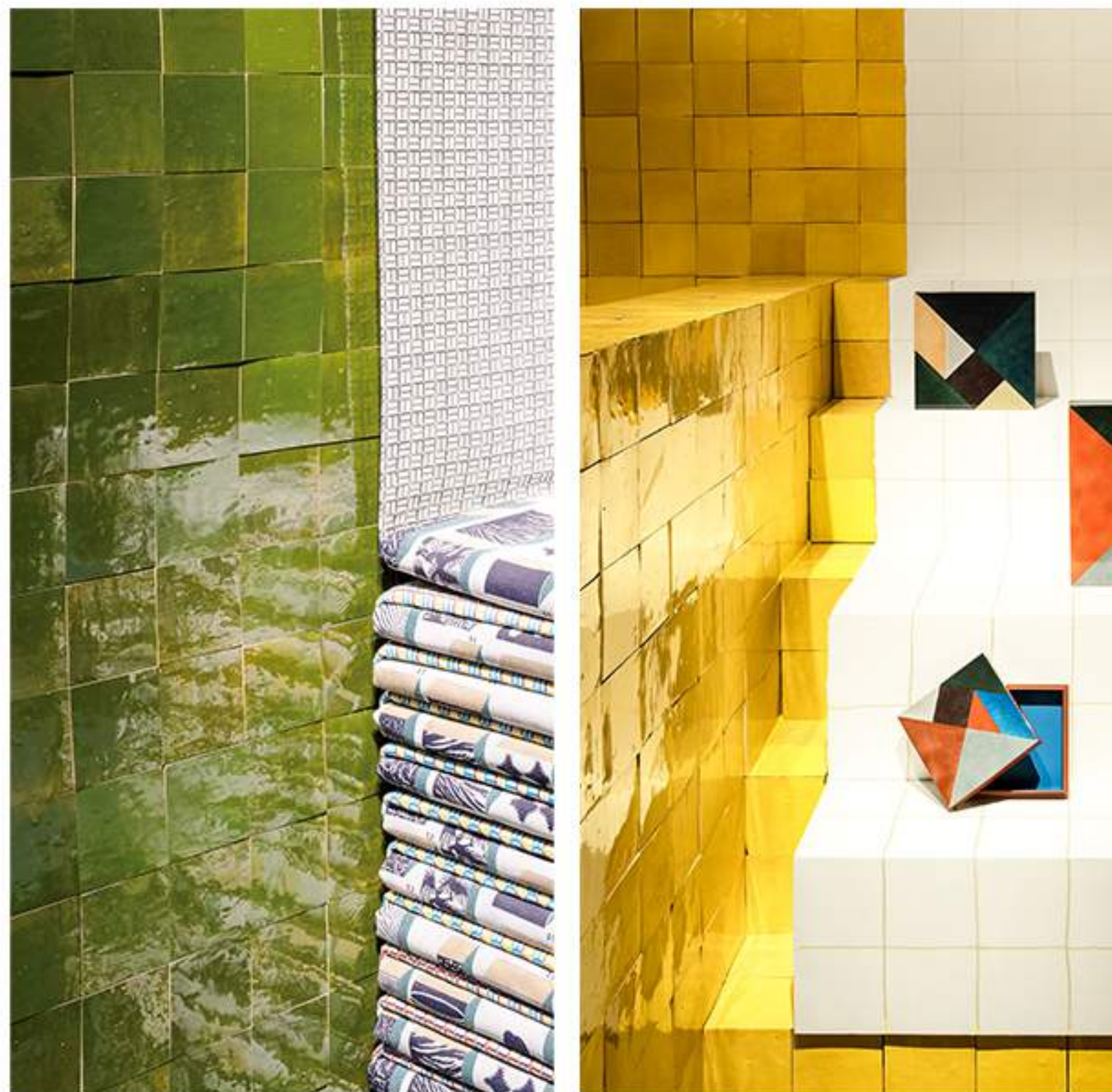


MOSAIC factory, based in Tangier, manufactures Zellige tiles in many shapes sizes and compositions in over 90 enamel colours.

Zellige tiles are suitable for wall and floor installations of private residences, commercial premises or work spaces.

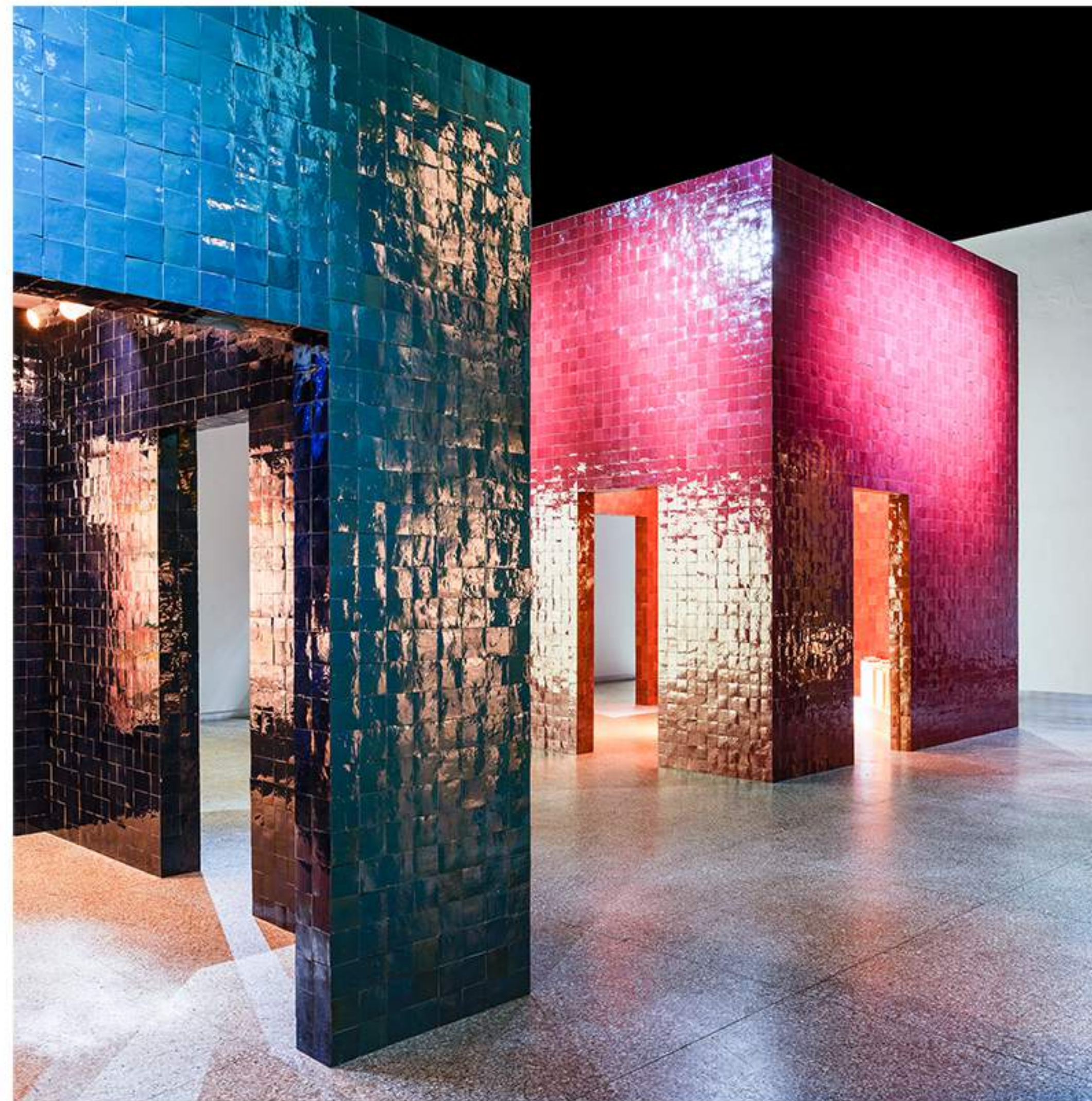
Zellige 10x10 tiles in several colours creating a patchwork with pixelated effect.





We regularly collaborate with designers on large-scale bespoke projects.

In 2018, our Zellige tiles were used to decorate the Hermès Salone del Mobile exposition in Milan.





MOSAIC factory *Bella! Bella!*



Zellige 10x10 tiles used to achieve a beautiful organic look thanks to the many variations of tone.



Our standard Zellige is supplied as loose tiles, to be installed on site. To help simplify the installation, pre-positioned panels can be manufactured. Pre-positioned panels also allow for custom designs of patterns, brand names or logos.



Panels of hand cut Zellige pieces, many styles available.



collaborations

*MOSAIC factory, since 2002
catering for your needs..*

Since 2002 we have worked with many architects, designers and brands on their projects.

Our B2C organisation simplifies communication between the factory and the client, allowing us to work in a timely and professional manner to deliver custom products.

Constant research and innovation allow us to offer products according to trends. Our latest developments include work on large terrazzo slabs that can be used as tabletops or stairs.

Most of the products we offer originated as customer requests that were fine-tuned by our in-house design team and experienced craftsmen.

Projects using our tiles can be seen on every continent, thanks to our ability to ship worldwide.

We strive to make custom tiles available to everyone.

