

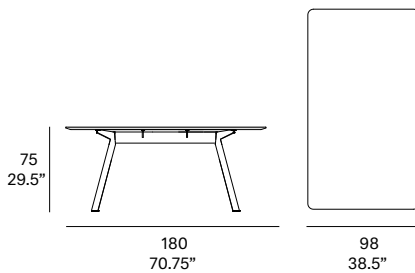
indoor

# Atrivm indoor

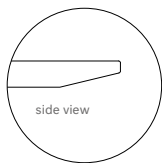
## Rectangular dining table / mesa rectangular

Manel Molina, 2020

T220 180



Tabletop options:



- solid wood top 21 mm/0.83" thick.
- veneered top 21 mm/0.83" thick.
- lacquered top 21 mm/0.83" thick.



\*Position of the junction box. For sockets and plugs other than type F CEE, please check availability / Posición de la caja de conexiones. Para bases de enchufe y clavijas distintas al tipo F CEE consultar disponibilidad.

Tabletop made of solid wood from European oaks with 0.83" of section. Structure made of high resistance aluminum profile, finished with polyester powder. Legs made of solid wood profile from European oaks. The collection is also available in lacquered top version (MDF) and in European oak veneer top. Optional junction box with 2 sockets F CEE and 2 USB charger. Delivered unassembled.

Tapa fabricada en madera maciza de roble europeo de 21 mm de sección. Estructura en perfilera de aluminio de alta resistencia, acabado en pintura de polvo de poliéster. Patas fabricadas en perfilera maciza de roble europeo. La colección también está disponible en versión lacada (MDF) y en tablero contrachapado de roble europeo. Caja de conexiones opcional con 2 enchufes F CEE y 2 cargadores USB. Se sirven desmontadas.

### Shipment details

Qty	1 dining table (2 boxes)
Volume	0,50 m <sup>3</sup> / 17.7 ft <sup>3</sup>
Gross weight	66 kg / 145.5 lb
Net weight	41 kg / 90.4 lb
Item dimensions (width x depth x height)	180 x 98 x 75 cm 70.75" x 38.5" x 29.5"

**expormim**

Expormim S.A.  
Pol. Ind. Jaime I  
46640 Moixent (Valencia) Spain  
+34 962 295 144/5  
export@expormim.com  
www.expormim.com

Expormim USA LLC  
(212) 204-8572  
usa@expormim.com  
www.expormim.com

1/3

indoor

**Solid wood tabletop & frame / tapa y estructura madera maciza**

---



W01 natural oak



W03 light oak



W02 white stained



W05 dark stained

**Veneered tabletop & frame / tapa y estructura tablero chapado**

---



W01 natural oak



W03 light oak



W02 white stained



W05 dark stained



**expormim**

Expormim S.A.  
Pol. Ind. Jaime I  
46640 Moixent (Valencia) Spain  
+34 962 295 144/5  
export@expormim.com  
www.expormim.com

Expormim USA LLC  
(212) 204-8572  
usa@expormim.com  
www.expormim.com

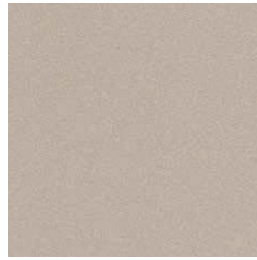
indoor

**Lacquered tabletop & frame/ tapa y estructura lacada**

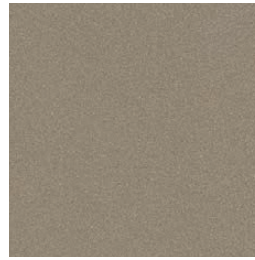
**textured lacquers**



LT24 linen



LT09 champagne



LT10 bronze



LT26 sable brown



LT11 graphite

**lacquers**



L5 taupe

**Structure/ estructura**

**Metallic finishes / metales**



601 FT black