

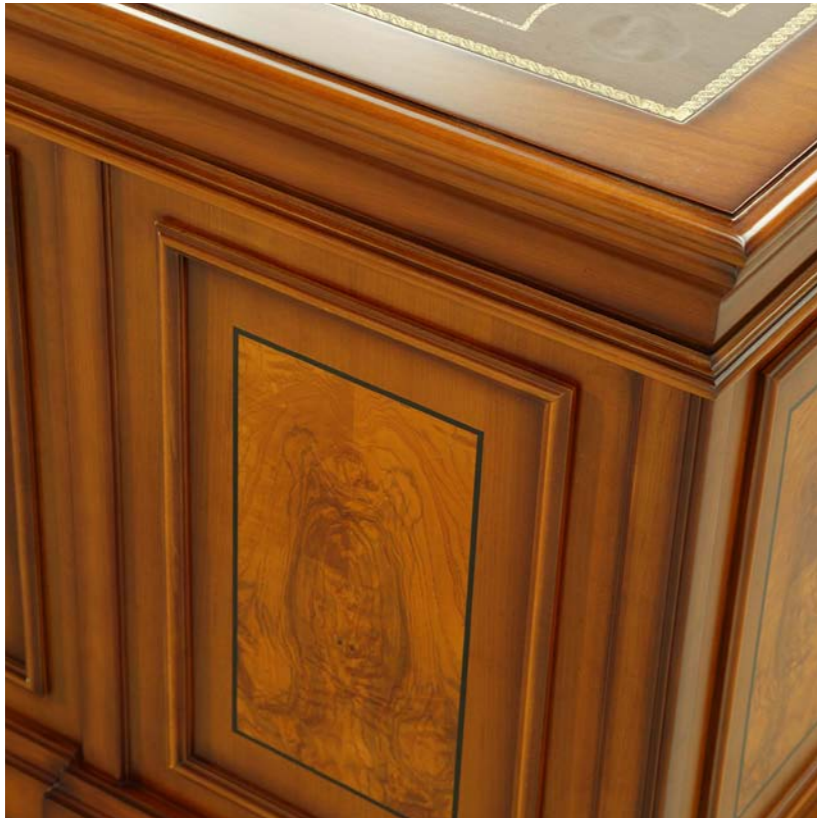


P A R L A M E N T

CLASSIC FURNITURE MADE IN SPAIN



ALPUCH



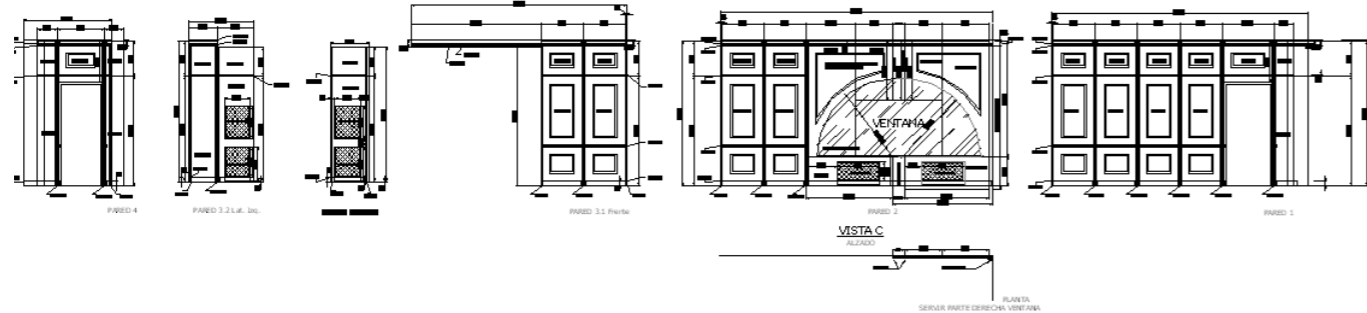
www.alpuch.com

INDEX

- 4 Introduction
- 8 Office desk
- 14 Sideboards
- 18 Meeting
- 30 Reception
- 32 Occasionals
- 42 Upholstery
- 56 Codec product
- 62 Samplers



ALPUCH
project solution



ALPUCH is one of the leading companies in the field of office furniture supply for management settings. Our success is a result of our commitment to carry out custom-made projects ready to meet our customers' needs. Other important factors are our responsible operation, excellent execution and flexible organisation. We create and offer a wide range of designs, including modern solutions for electronics or IT tasks, all manufactured in Spain.. product.

Company's History
Our origins go back to 1963 when the company was founded in Valencia. Initially we dedicated to the home furnishing market until 1998 when the export markets required solutions for Management offices. Since then, we have participated in many top level projects and enlarged our product range and experience in order to be able to satisfy our clients' demands and maximise their profit.

With the Parliament collection we can create warm spaces to give a touch of luxury to your work area, creating integral furnishing projects adapted to each need of our clients.

Our artisans select the noble materials to perfectly combine the union between them.

we discuss with the client and the designer about the project we are subjected to, to analyze and study the finished product and look for the best solutions that facilitate the molding and fabricat phase, as well as the aesthetics of the finished product. we can also develop a product starting from the sketch, a chat, shaping your ideas in three dimensions to obtain a design

STYLE Parlament



Transforming Spaces.
Transforming Lives.

The parliament collection of ALPUCH furniture consists of the combination of noble veneers that are cherry and olive ash, combined with a traditional varnish patting all the moldings and projections to enhance and give depth to its shapes.

La colección parlament de muebles ALPUCH está formada por la combinación de nobles chapas de cerezo y ceniza de olivo, combinadas con un barniz tradicional que golpea todas las molduras y proyecciones para realzar y dar profundidad a sus formas.



7017

W -200 D -88 H -77 M3 1.38 W 178KG



7136PC

W -110 D -90 H -77 M3 0.58 W 51KG



7109I+R

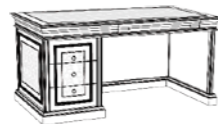
W -240 D -230 H -77 M3 1.95 W 235KG





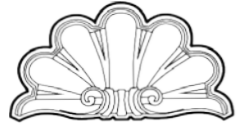
7020I

W -160 D -88 H -77 M3 0.85 W 129KG

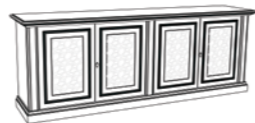


TRANSFORMING SPACES

CREATING THE ART OF STYLISH LIVING



ALPUCH
project solution



7184

W -219 D -48 H -82.5 M3 1.15 W 115KG



M E E T I N G

P A R L A M E N T

S T Y L E



7127(WOOD)

W -1.3MT D -1.3MT H -0.77 MT M3 0.76 WEIGHT 58KG



MEETING ROOMS

Furniture intended for large and small meetings, giving technical and comfort solutions to get the most out of the moment.

ALPUCH manufactures meeting tables in different veneers and finishes to meet the need of each client. We are also specialized to develop any format of the meeting table to give solution to any problem our customers may encounter.



W -5MT D -1.4MT H -0.88 MT



7133 (WOOD)



W -2.6MT D -1.2MT H -0.77 MT M3 1.44 WEIGHT 135KG

Taylor made

Creative Design

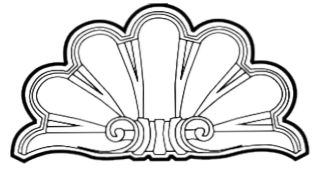
We are also specialized to develop any format of the meeting table to give solution to any problem our customers may encounter.

Our production is always governed by high standards of quality what evidenced by the important companies that have trusted us and hold their meetings at the tables developed by ALPUCH

We design and manufacture furniture for corporate board rooms in different finishes and shapes where the spirit of each company is reflected by their quality and design. ALPUCH manufactures meeting tables in different veneers and finishes to meet the need of each



W - 10.9MT D - 3.5MT H - 0.88 MT



ALPUCH
project solution



W - 15MT D - 1.8 MT H - 0.88 MT

ALPUCH PROJECTS

We are also specialized to develop any format of the meeting table to give solution to any problem our customers may encounter.

Our production is always governed by high standards of quality what evidenced by the important companies that have trusted us and hold their meetings at the tables developed by ALPUCH

We design and manufacture furniture for corporate board rooms in different finishes and shapes where the spirit of each company is reflected by their quality and design. ALPUCH manufactures meeting tables in different veneers and finishes to meet the need of each



Furnishing under each client's need



Our dedicated team consists of designers, sales and administrative staff, a production engineer and his assistant, as well as a cabinet-making joint venture dedicated to custom items.

Thanks to the experience of our artisans combined with our team of designers, at Muebles Alpuch we create furniture adapted to the needs of each client, following from the beginning of the design to the final service for its installation in the required site. Our marketing network supports clients on five continents.



5041

D60 H -66 M3 0.31 W 10KG



5066

D 60 H -66 M3 0.34 W 10KG



5090

D70 H -66 M3 0.43 W 14KG

OCCASIONALS

5062

D68 H -66 M3 0.43 20 KG



5064

W -1.10 D -0.65 H -0.45 M3 0.5 W 24KG



5059

W -1.31 D -0.71 H -0.49 M3 0.68 W 38KG



5050

W -1.30 D -0.70 H -0.45 M3 0.64 W 30KG



5080

W -1.4 D 0.8 H 0.5 M3 0.76 W 34KG



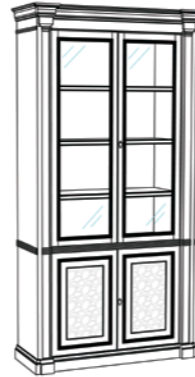
P A N E L I N G

P R O J E C T S

T A Y L O R O R

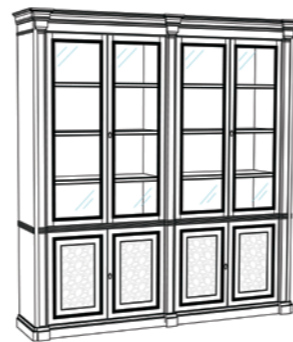
L U X U R Y





T MOD01

W -1.2 D -0.46 H -2.365 M3 1.83 W 162KG



T MOD02

W -2.22 D -0.47 H -2.365 M3 3.24 W 286KG



UPHOLSTERY

Bringing Interiors To Life

Exclusive upholstery pieces upholstered with the technologies of our time but with the culture of our artisans using natural materials and always being respectful with the environment



6386PC

W -0.65 D -0.71 H -0.95 M3 0.57 22KG



6385PC

W -0.65 D -0.71 H -0.95 M3 0.53 16KG



6372PC

W -0.59 D -0.76 H 0.1M3 0.56 W 18KG



5096PC

W -0.58 D -0.58 H 0.9 M3 0.48 9.5KG



6731M

W -0.59 D -0.52 H 0.84 M3 0.50 W 22KG



6730M

W -0.59 D -0.52 H 1.04 M3 0.54 W24KG





5048PC

W -0.59 D -0.67 H -0.9 M3 0.43 9.5KG



5047PC

W -0.58 D -0.59 H -0.95 M3 0.51 W 22KG



5149 PC

W -0.57 D -0.56 H -0.94 M3 0.0.37 W 9 KG



5148PC

W -0.49 D -0.56 H -0.94 M3 0.32 W 6 KG



5448 PC

W -0.59 D -0.67 H -0.9 M3 0.43 W 9.5KG



5147PC

W -0.75 D -0.7 H -0.99 M3 0.6 28KG



5152PC

W -0.75 D -0.7 H -1.19 M3 0.74 30KG



6293PC

W -0.75 D -0.7 H -0.99 M3 0.6 28KG



6248PC

W -0.60 D -0.76 H -1.05 M3 0.54 18KG



6247PC

W -0.69 D -0.71 H -1.2



5449PC

W -0.85 D -0.8 H -1.03 M3 0.82 25KG



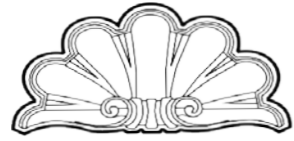
6388PC

W -0.75 D -0.7 H -0.99 M3 0.94 33KG



6387-CAP

W -0.8 D -0.86 H -1.28 M3 0.94 30KG



ALPUCH
project solution

High decoration

Decorative upholstery

Armchair varnished in black and upholstered in black leather using the old brass bald nailing technique. With the 6245 armchair from alpuch mbobilario you can provide a solution for your high decoration project

Sillon barnizado en color negro y tapizado en piel negra mediante la antigua tecnica de claveterado de calvos de laton .con el sillon 6245 de alpuch mbobilario podra dar solucion para su proyecto de alta decoracion



6245PC

W -0.81 D -0.71 H -1.05 M3 0.8 32KG



6387PC

W -0.80 D -0.86 H -1.28 M3 0.94 32KG



5150PC

W -0.83 D -0.76 H -1.19 M3 0.85 33KG



5358PPC

W -1.65 D -0.95 H -0.76 M3 1.4 43KG



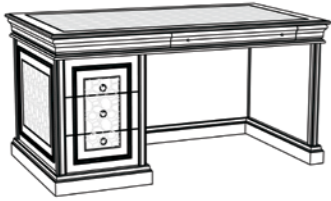
5452PC

W -2.4 D -0.93 H -0.90 M3 2.24 60 KG

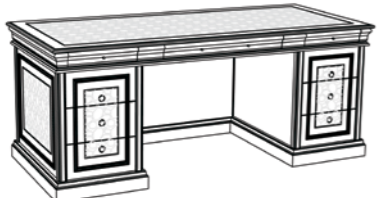




7405 PC (LEADER)
W -1.2 D -0.60 H -0.77 M3 0.82 49 KG



7020I PC (LEADER)
W -1.6 D -0.88 H -0.77 M3 0.85 129 KG

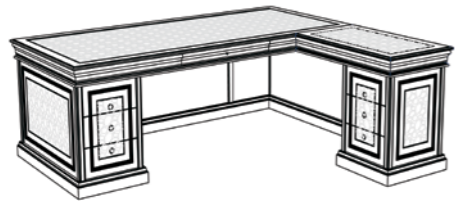


7017 PC (LEADER)
W -2. D -0.88 H -0.77 M3 1.32 172 KG

7109 PC (LEADER)
W -2.4 D -1.1 H -0.77 M3 1.84 209 KG

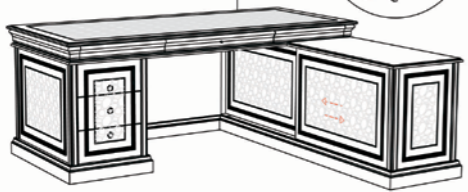


7016I+R PC (LEADER)
W -1.8 D -2.08 H -0.77 M3 1.5 182 KG



7017I+R PC PC (LEADER)
W -2 D -2.08 H -0.77 M3 1.7 210 KG

7109I+R PC PC (LEADER)
W -2.4 D -2.3 H -0.77 M3 1.95 235 KG



5452PC PC (LEADER)
W -2 D -1.88 H -0.77 M3 1.9 210 KG

Office desk

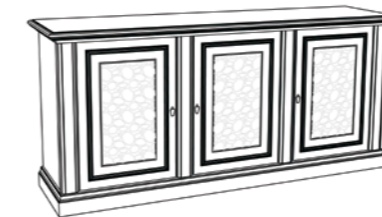
Sideboards



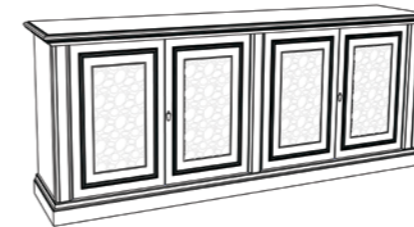
7419 (FRIGO)
W -0.67 D -0.66 H -0.92 M3 0.53 40 KG



7183
W -1.82 D -0.48 H -0.82 M3 1.05 110 KG

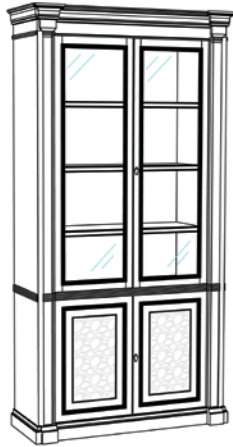


57184
W -2.19 D -0.48 H -0.82 M3 1.15 115 KG



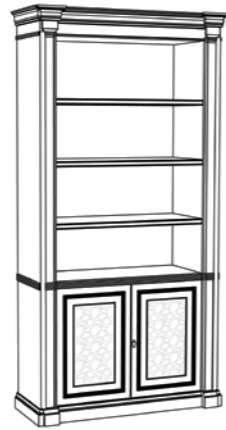
7184
W -2.19 D -0.48 H -0.82 M3 1.15 115 KG

Modular



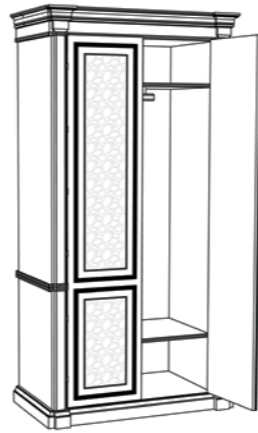
TMOD01

W -1.2 D -0.47 H -2.365 M3 1.83 W 162KG



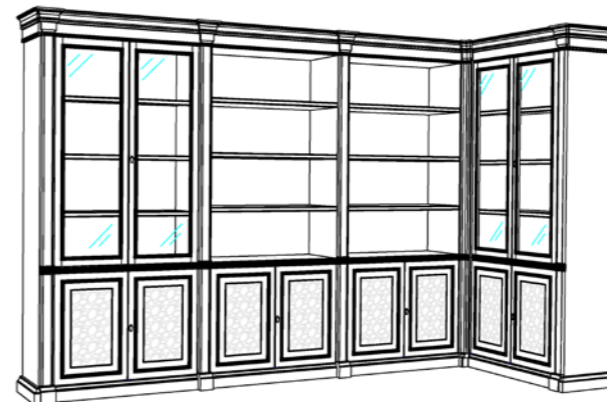
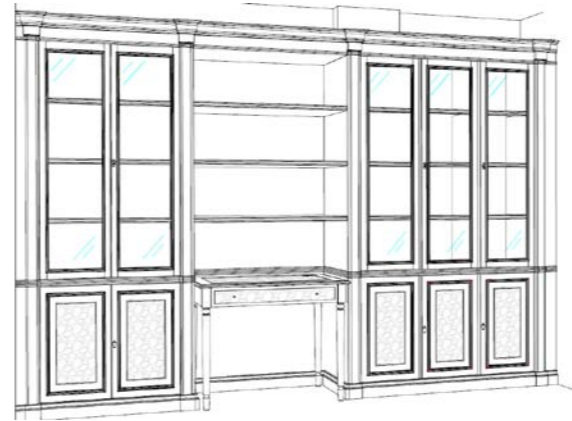
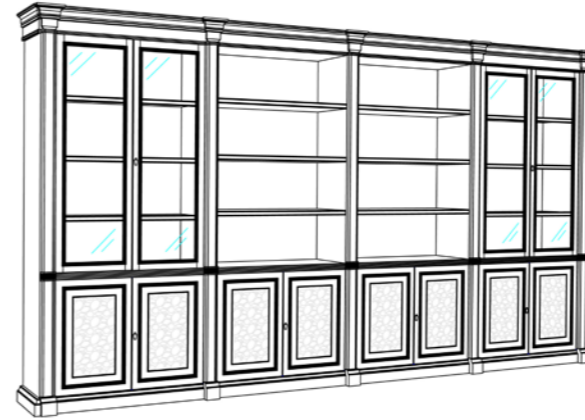
TMOD02

W -1.2 D -0.47 H -2.365 M3 1.83 W 140KG



7432

W -1.2 D -0.635 H -2.365 M3 1.19 W 160KG



ALPUCH
project solution



TMOD04

W -2.22 D -0.47 H -2.365 M3 3.13 W 242KG



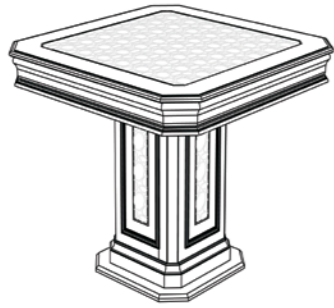
TMOD03

W -2.22 D -0.47 H -2.365 M3 3.24 W 286KG

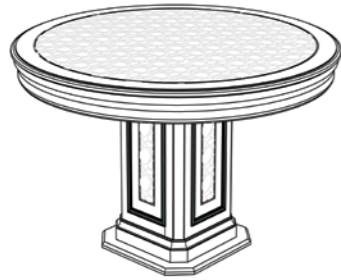
Consult with the factory for the technical price of components

Options

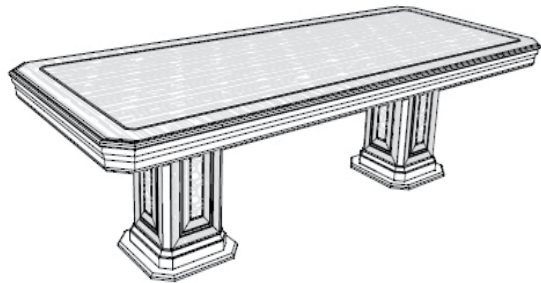
Meeting



7128 PC (LEADER)
W 1.1 D -1.1 H -77 M3 0.60 W 52KG

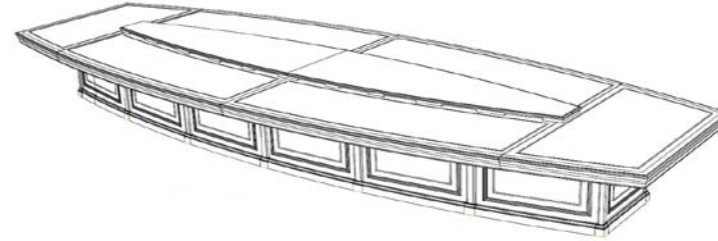


7127 PC (LEADER)
W -130 D -130 H -77 M3 0.76 W 58KG

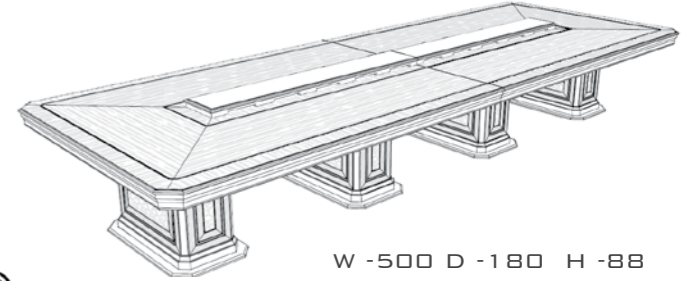


7133 PC (LEADER)
W -2.6 D -1.2 H -77 M3 1.44 W 135KG

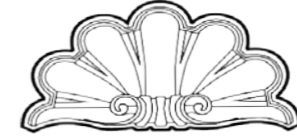
Tailor-made



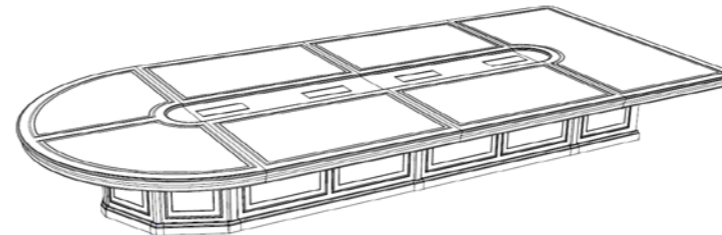
W -8.8 D -2.2 H -88



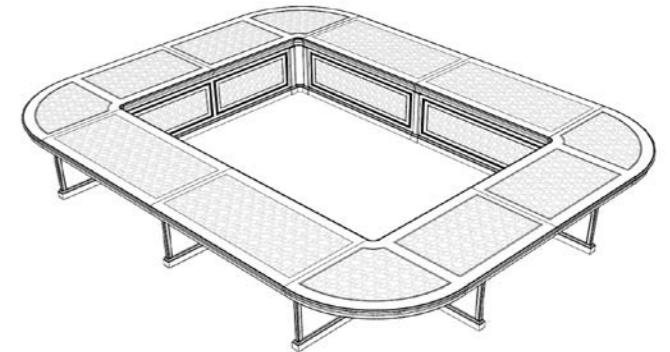
W -500 D -180 H -88



ALPUCH
project solution



W -5.8 D -2.6 H -88



W -5.2 D -4.2 H -88

PARLAMENT

SAMPLERS



C11-PAR

Cherry



C27-PAR

Cherry

Olivato ash

Due to the natural materials with which we work, the tonality of the leather samples and wood finishes are indicative and may suffer slight variations.

UPHOLSTERY



BEIGE

PANNA

TOFFE

PLATA

CENIZA

NEGRO

VERDE



CUOIO

TIERRA

CHOCO

ROSSO

GRANATE

AZURRO

NOTE

Leader/ecoleder

Debido a los materiales naturales con los que trabajamos, la tonalidad de las muestras de piel y de acabados de madera son orientativas y puede sufrir ligeras variaciones.