

Boma

Left corner 4 seater

“connection”

by Rodolfo Dordoni

**kettal**

# Left corner 4 seater “connection”

Designer  
Rodolfo Dordoni

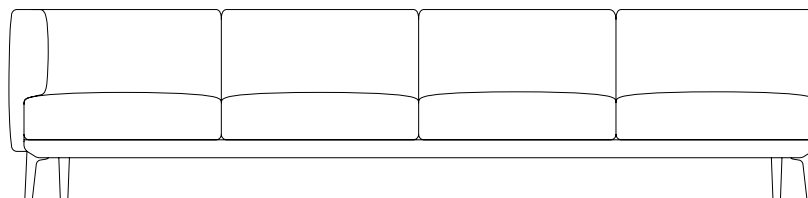
Collection  
Boma

Reference  
KS2502800

1/5

The Boma collection, designed by Rodolfo Dordoni for Kettal, was born from the need of high performances of outdoor environment, without sacrificing the increasing demand for comfort that new products have to face. Therefore the structure is organized around a frame entirely made of aluminum, capable of hiding in the essentiality of its lines either the quality of the used materials and the chance of easy articulation in different compositions.

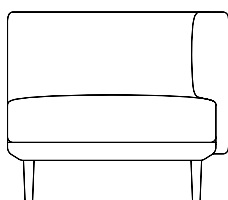
cm/inch



332/130,7

79/31,1

43/16,9



cm/inch 92/36,2



kettal

# Left corner 4 seater “connection”

Designer  
Rodolfo Dordoni

Collection  
Boma

Reference  
KS2502800

2/3

## Materials

### Fabric

Heavy Load 100.000 Cycles,  
Heavy Load Resistant 1000  
Decitex, Kettalize-It, Resist U.v.  
En-581-4, Easy Clean, Abrasion,  
Resistance 30.000 Cycles,  
Quickdry

### Aluminium

Antioxy, Heavy Load, Resistant  
En-1421, Kettalize-It, Anti-  
Scratch, Easy Clean, Flame  
Retardant M1, Eco Friendly  
Ecoembes Recycling Process

## Maintenance

Clean with mild soap using  
sponge or cloth. Be gentle  
while cleaning, do not scrub  
aggressively the fabric. Once  
cleaned please make sure you  
remove soap excess.

In case of aggressive stains  
clean with diluted household  
bleach.

Clean stains promptly. The  
longer it remains, more difficult  
will be to remove.

Once cleaned the fabric steam  
iron the fabric. Just use steam,  
be carefull NOT placing the  
iron directly in the fabric it will  
get damage.

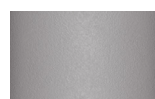
## Legs Colour Options



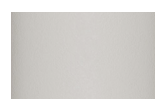
Slate Stone  
01C



Mysty Smoke  
02C



Ash  
03C



Bone  
04C



Tuff  
05C



Wet Stone  
06C



Sand Dune  
07C



Dry Clay  
08C



Arabica  
09C



Sepia  
19C



Rose Canyon  
16C



Blossom  
20C



Ruby Dust  
18C



Sunset Glow  
17C



Terrarosa  
15C



Terracota  
14C



Amber  
13C



Ginger Root  
12C



Desert Storm  
11C



African Savannah  
10C



Spring Meadow  
28C



Kombu  
29C



Forest Stream  
27C



Sea Moss  
26C



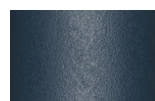
Glacier Ice  
25C



Polar Sky  
24C



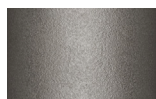
Nightfall  
23C



Indigo  
22C



Wild Lupin  
21C



Galena  
33C



Bronze  
30C



Corten  
31C



Manganese  
32C

# Left corner 4 seater “connection”

Designer  
Rodolfo Dordoni

Collection  
Boma

Reference  
KS2502800

3/5

## Legs Options



Standard legs



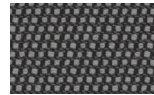
Crossed legs

## Fabric / Cushion Colour

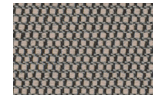
## Terrain Elements Laminate



Charcoal  
01L



Cumulus  
02L



Fog  
09L



Porous Grey  
08L



Snowcap  
03L



Moonstone  
07L



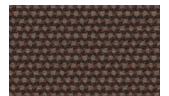
Karakum  
06L



Cambium  
12L



Raku  
11L



Clove  
13L



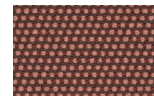
Desert Rose  
14L



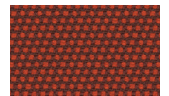
Pink Salt  
15L



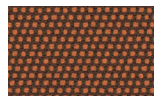
Pacific Dawn  
16L



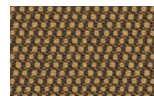
Acer  
17L



Firetail  
18L



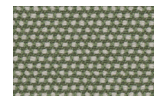
Glowing Ember  
19L



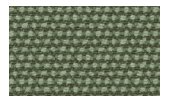
Tiger Eye  
05L



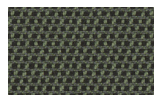
Goldrush  
04L



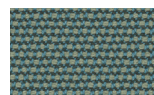
Sea Heart  
22L



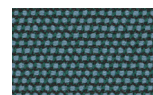
Heath  
21L



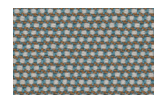
Peppercorn  
20L



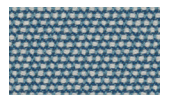
Rock Pool  
23L



Tropic  
24L



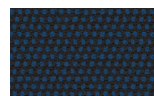
Skylark  
25L



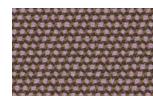
Nautica  
26L



Blue Reef  
27L



Cosmos  
28L



Amethyst  
29L

# Left corner 4 seater “connection”

Designer  
Rodolfo Dordoni

Collection  
Boma

Reference  
KS2502800

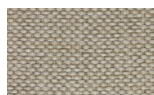
4/5

Fabric / Cushion Colour

Tonale Lino



White Chia  
61L-61T



Fennel  
62L-62T



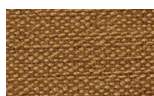
Elwendia  
63L-63T



Brown Mustard  
64L-64T



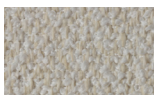
Kampot  
65L-65T



Fenugreek  
66L-66T

Fabric / Cushion Colour

Tonale Boucle



White Poppy  
81L-81T



Sesame  
82L-82T



Anise  
83L-83T



Dill  
84L-84T



Allspice Jamaica  
85L-85T



Birds Foot  
86L-86T



# Left corner 4 seater “connection”

Designer  
Rodolfo Dordoni

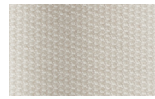
Collection  
Boma

Reference  
KS2502800

5/5

Fabric / Cushion Colour

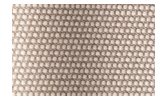
Terrain Laminate Fabrics



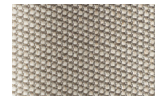
White Cliffs  
290



Dry Sand  
285



Porous Grey  
291



Limestone  
292



Fog  
289



Deer  
286



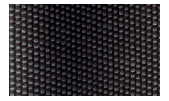
Wet Sand  
287



Cobblestone  
302



Cyprus Umber  
301



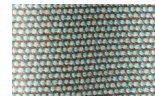
Loam  
297



Charcoal  
293



Arctic  
295



Fjord  
248



Cerulean  
314



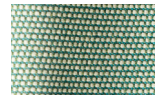
Caribbean  
298



Atlantic  
311



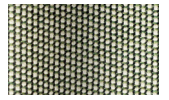
Rainforest  
312



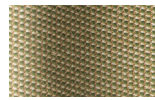
Lagoon  
249



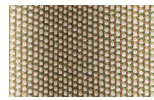
Cedar  
288



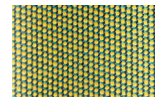
Moss  
296



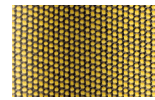
Olive  
313



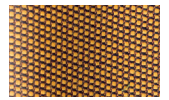
Autumn  
315



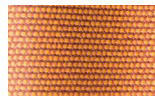
Summer Sky  
317



Golden Sand  
303



Flamma  
304



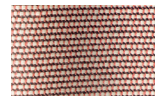
Sunrise  
299



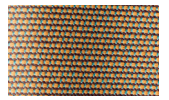
Saffron  
305



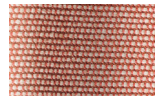
Burnt Sienna  
306



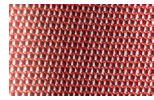
Ash Rose  
294



Cooper  
316



Dusk Pink  
307



Flamingo  
310



Coral  
309



Sandstone  
308