

Band

Club chair teak

by Patricia Urquiola

kettal

Club chair teak

Designer
Patricia Urquiola

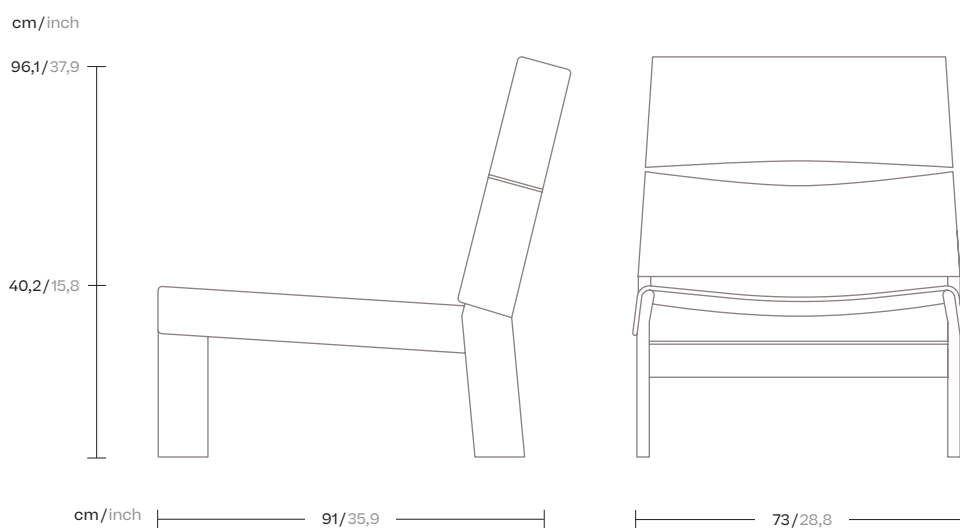
Collection
Band

Reference
KS2800600

1/3

The idea behind the BAND collection is the breakdown of structure. An object designed using an ensemble of pieces. The chair's design intentionally challenges the classic sophisticated lines of furniture design and becomes something schematic, a conceptual programme.

A structure made up of repetitive angular shapes that give centre stage to its raw materials, and can be formed entirely of aluminium or teak wood, and of Terrain Fabrics.



kettal

Club chair teak

Designer
Patricia Urquiola

Collection
Band

Reference
KS2800600

2/3

Materials

Fabric
Heavy Load 100.000 Cycles,
Heavy Load Resistant 1000
Decitex, Kettalize-It, Resist U.v.
En-581-4, Easy Clean, Abrasion,
Resistance 30.000 Cycles,
Quickdry

Teak
Teak A-Grade, Eco Friendly
Oeko-Tek

Maintenance

Clean with mild soap using
sponge or cloth. Be gentle
while cleaning, do not scrub
aggressively the fabric. Once
cleaned please make sure you
remove soap excess.
In case of aggressive stains
clean with diluted household
bleach.
Clean stains promptly. The
longer it remains, more difficult
will be to remove.

Once cleaned the fabric steam
iron the fabric. Just use steam,
be carefull NOT placing the
iron directly in the fabric it will
get damage.

Legs Colour Options



Teak
904

Teak

Seat/Back Cushion



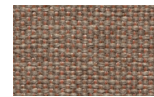
White Chia
61L-61T



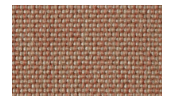
Fennel
62L-62T



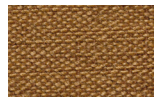
Elwendia
63L-63T



Brown Mustard
64L-64T



Kampot
65L-65T



Fenugreek
66L-66T

Tonale Lino

Seat/Back Cushion



White Poppy
81L-81T



Sesame
82L-82T



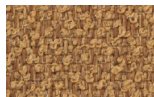
Anise
83L-83T



Dill
84L-84T



Allspice Jamaica
85L-85T



Birds Foot
86L-86T

Tonale Boucle

Club chair teak

Designer
Patricia Urquiola

Collection
Band

Reference
KS2800600

3/3

Seat/Back Cushion

Terrain Laminate Elements



Charcoal
01L



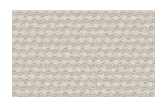
Cumulus
02L



Fog
09L



Porous Grey
08L



Snowcap
03L



Moonstone
07L



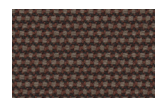
Karakum
06L



Cambium
12L



Raku
11L



Clove
13L



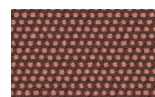
Desert Rose
14L



Pink Salt
15L



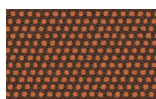
Pacific Dawn
16L



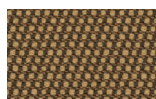
Acer
17L



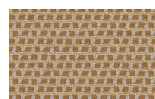
Firetail
18L



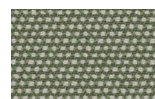
Glowing Ember
19L



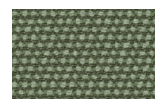
Tiger Eye
05L



Goldrush
04L



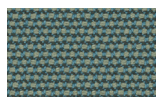
Sea Heart
22L



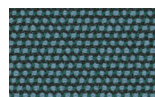
Heath
21L



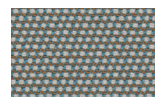
Peppercorn
20L



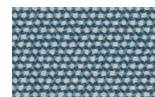
Rock Pool
23L



Tropic
24L



Skylark
25L



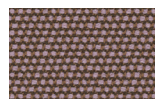
Nautica
26L



Blue Reef
27L



Cosmos
28L



Amethyst
29L

Club chair teak

Designer
Patricia Urquiola

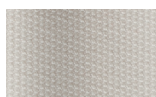
Collection
Band

Reference
KS2800600

3/3

Seat/Back Cushion

Terrain Fabrics Laminate



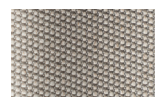
White Cliffs
290



Dry Sand
285



Porous Grey
291



Limestone
292



Fog
289



Deer
286



Wet Sand
287



Cobblestone
302



Cyprus Umber
301



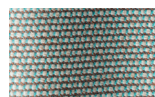
Loam
297



Charcoal
293



Arctic
295



Fjord
248



Cerulean
314



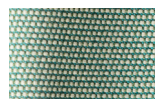
Caribbean
298



Atlantic
311



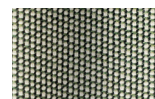
Rainforest
312



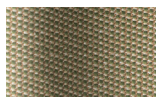
Lagoon
249



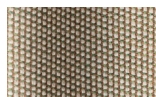
Cedar
288



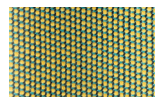
Moss
296



Olive
313



Autumn
315



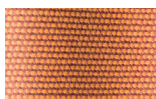
Summer Sky
317



Golden Sand
303



Flamma
304



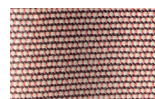
Sunrise
299



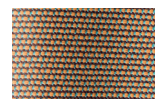
Saffron
305



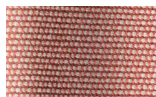
Burnt Sienna
306



Ash Rose
294



Cooper
316



Dusk Pink
307



Flamingo
310



Coral
309



Sandstone
308