

indoor

Flamingo indoor

Dining table stand with round top / pie de mesa con tapa redonda

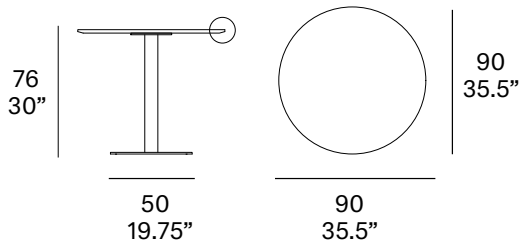
Studio expormim, 2017

T969 R 90



Tabletop made of solid wood from European oaks with 0.83" of section. Structure made of aluminum tube, finished with polyester powder. The collection is also available in a lacquered version (MDF) and in European oak plywood. Delivered unassembled.

Tapa fabricada en madera maciza de roble europeo de 21 mm de sección. Estructura fabricada en tubo de aluminio, con acabado en pintura de poliéster. La colección también está disponible en versión lacada (MDF) y en tablero contrachapado de roble europeo. Se sirven desmontadas.



Shipment details

Qty	1 dining table (2 boxes)
Volume	0,29 m ³ / 10 ft ³
Gross weight	34 kg / 75 lb
Net weight	31 kg / 68.5 lb
Item dimensions (width x depth x height)	90 x 90 x 76 cm 35.5" x 35.5" x 30"

Tabletop options:



expormim

Expormim S.A.
Pol. Ind. Jaime I
46640 Moixent (Valencia) Spain
+34 962 295 144/5
export@expormim.com
www.expormim.com

Expormim USA LLC
(212) 204-8572
usa@expormim.com
www.expormim.com

1/4

indoor

Solid wood top / tapa madera maciza



W01 natural oak



W03 light oak



W02 white stained



W05 dark stained

Veneered top / tapa tablero chapado



W01 natural oak



W03 light oak



W02 white stained



W05 dark stained



expormim

Expormim S.A.
Pol. Ind. Jaime I
46640 Moixent (Valencia) Spain
+34 962 295 144/5
export@expormim.com
www.expormim.com

Expormim USA LLC
(212) 204-8572
usa@expormim.com
www.expormim.com

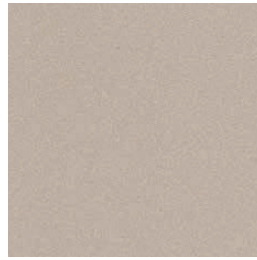
indoor

Lacquered top / tapa lacada

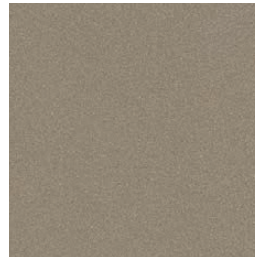
textured lacquers



LT24 linen



LT09 champagne



LT10 bronze



LT26 sable brown



LT11 graphite

lacquers



L5 taupe

indoor

Frame / estructura

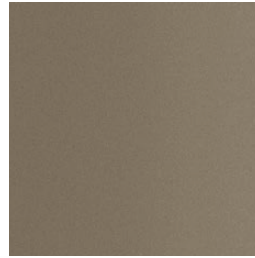
metallic finishes- fine textured



124 FT linen



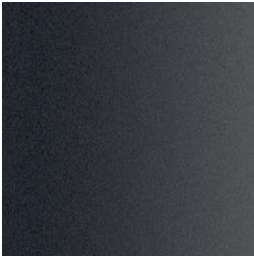
102 FT light grey



110 FT bronze



108 FT oxide



111 FT graphite