

ALGA

DINING TABLE 90
REF.: 71014



Materials

Structure of lacquered aluminium covered with synthetic fiber SHINTOTEX. Adjustable legs.

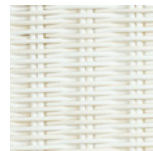
Dimensions

Length x width x height:
diameter 90 x 75 cm. / diameter 35.4 x 29.5 in.
Weight: 10 Kg no glass - 23 Kg with glass /
22 lb no glass - 50 lb with glass.
Volume: 0.61 m³ no glass - 0.65 m³ with glass.

Finish

Weavings: Round 3 mm ϕ + Flat Oval 6 mm.
Color:

Ivory 36



Toasted 03

