

# Flat

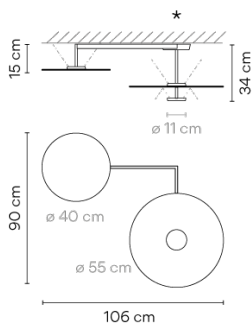
5910

Design By Ichiro Iwasaki

Flat is a ceiling lamp composed of three horizontal discs at various heights that create planes of reflected light. The discs are self-illuminated by reflected light. The Flat ceiling light has a strong graphic quality, combining structure and functionality.

VIBIA

## Model Sheet



### Finish

- 10 White  
NCS S 0300-N
- 73 White, Off-White  
NCS S 0300-N, NCS S 1000-N
- 72 White, Green L1  
NCS S 0300-N, NCS S 4005-G80Y

LED temperature color 2700 K

Dimming DALI 1-10V Push

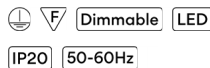
Installation type Surface Canopy

**Materials**  
Ceiling rose: Steel  
Reflector: Aluminum  
Body: Steel  
Head: Aluminium

**Light source**  
3 x LED PLATE 13,5W 700mA  
E

**LED**  
CRI>90 5220 lm 128.88  
2700 K

**Driver**  
CC - Constant Current 700  
220~240 V 50/60 HZ



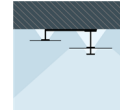
**Application**  
Ceiling Lamps

**Packaging**  
1 Box  
0.727 m x 0.727 m x 0.32 m  
Gross weight 10.6  
Net weight 9.1  
Vol. 0.1691

### Lighting effect

#### General Lighting

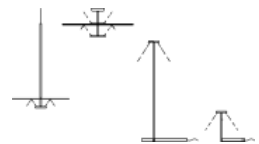
Lamp that emits an upward or backward beam that is reflected by the ceiling or wall.



### Photometric Data

**Efficiency** 66.71 lm/W  
**Coordinate System** CG  
**Total Flux** 2875.20 lm  
**Maximum Value** 661.18 cd

### Other Applications



All of our products come with a five-year warranty.  
Check our legal terms at [www.vibia.com/warranty](http://www.vibia.com/warranty)

Vibia Lighting, S.L.U.

Office / Oficina  
Progrés 4-6. 08850 Gavà. Barcelona, Spain.

International T +34 934 796 971  
Spain / Portugal T +34 934 796 970

customer.service@vibia.com  
vibia.com