

indoor

Team Shelf / estantería

Mario Ruiz, 2015/2021

T852 90

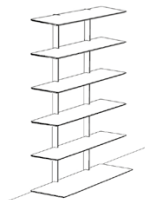
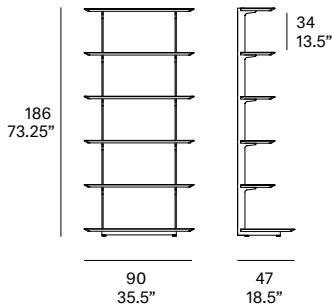


Furniture system made of solid wood from European oaks and metallic frame. Shelf width: 35.5". The collection is also available in a lacquered version (MDF). Adjustable PA spacers.

Sistema de mobiliario fabricado en madera maciza de roble europeo y estructura metálica. Ancho de estantería: 90 cm. La colección también está disponible en versión lacada (MDF). Conteras regulables de inyección de PA.

Shipment details

Qty	1 shelf (4 boxes)
Volume	0,70 m ³ / 24.5 ft ³
Gross weight	66 kg / 145.5 lb
Net weight	59 kg / 130 lb
Item dimensions (width x depth x height)	90 x 47 x 186 cm 35.5" x 18.5" x 73.25"



expormim

Expormim S.A.
Pol. Ind. Jaime I
46640 Moixent (Valencia) Spain
+34 962 295 144/5
export@expormim.com
www.expormim.com

Expormim USA LLC
(212) 204-8572
usa@expormim.com
www.expormim.com

1/3

indoor

Shelves

solid wood



W01 natural oak



W03 light oak



W02 white stained

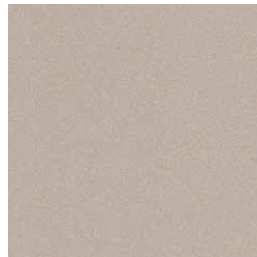


W05 dark stained

textured lacquers



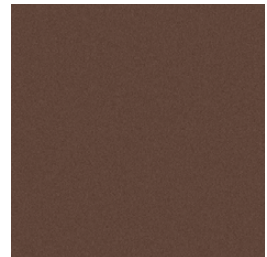
LT24 linen



LT09 champagne



LT10 bronze

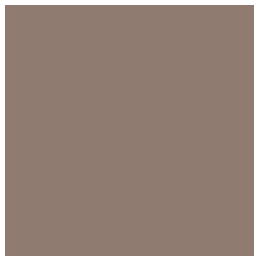


LT26 sable brown



LT11 graphite

lacquers



L5 taupe

expormim

Expormim S.A.
Pol. Ind. Jaime I
46640 Moixent (Valencia) Spain
+34 962 295 144/5
export@expormim.com
www.expormim.com

Expormim USA LLC
(212) 204-8572
usa@expormim.com
www.expormim.com

indoor

Metallic structure

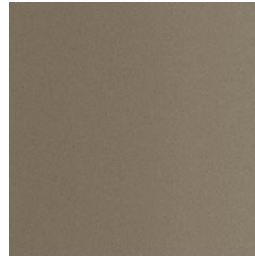
metallic finishes- fine textured



124 FT linen



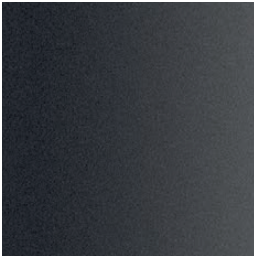
102 FT light grey



110 FT bronze



108 FT oxide



111 FT graphite