

indoor

Huma

Dining armchair with metal legs / sillón comedor con patas metálicas

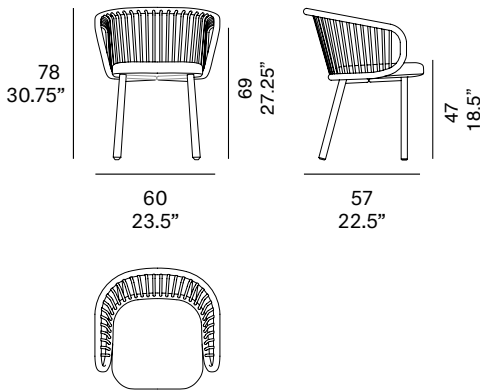
Mario Ruiz, 2015/2021

T070 M



Dining armchair with structure made of peeled and tinted natural rattan of 1.1" diameter. Backrest manufactured in peeled and tinted natural rattan of 0.4" diameter. Finished with a three step water-based coating (dye, base coat and top coat) highly resistant to solar radiation thanks to UV filters. Upholstered seat with metal legs. Possibility of customization through a wide variety of high performance technical fabrics. Plastic protective caps.

Sillón comedor con estructura en rattan natural pelado y tintado de 28 mm de calibre. Respaldo fabricado en rattan natural pelado y tintado de 10 mm de calibre. Acabado con recubrimiento en tres fases (tinte, fondo y acabado) con filtros UV que lo hacen altamente resistente a la radiación solar. Los acabados utilizados son en base al agua. Asiento tapizado y patas metálicas. Posibilidad de personalización mediante una amplia variedad de tejidos técnicos de altas prestaciones de uso. Tacos protectores de plástico.



Shipment details

Qty	1 dining armchair (1 box)
Volume	0,34 m ³ / 12 ft ³
Gross weight	15 kg / 33 lb
Net weight	11 kg / 24.5 lb
Box dimensions (approx.)	65 x 62 x 83 cm 25,5" x 24,5" x 32,75"
Item dimensions (width x depth x height)	60 x 57 x 78 cm 23.5" x 22.5" x 30.75"
COM (1, 40 - 1,50 m / 54"-59")	0,65 m / 0.7 yd

Certifications

EN 16139:2013

expormim

Expormim S.A.
Pol. Ind. Jaime I
46640 Moixent (Valencia) Spain
+34 962 295 144/5
export@expormim.com
www.expormim.com

Expormim USA LLC
(212) 204-8572
usa@expormim.com
www.expormim.com

1/8

Rattan

Natural_matt



R10 natural

Tinted_matt



R30 oak



R03 noce



R05 grigio



R23 french grey



R06 verde oliva



R08 azzurro



R09 nero

Tinted_gloss



R31 cognac



R32 antique brown



R33 alpine green

Lacquered_matt



R02 bianco



R22 clay



R14 japanese red



indoor

Legs / patas

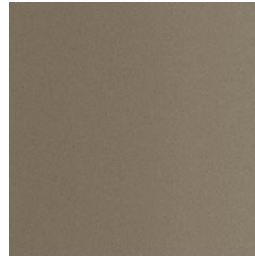
metallic finishes- fine textured



124 FT linen



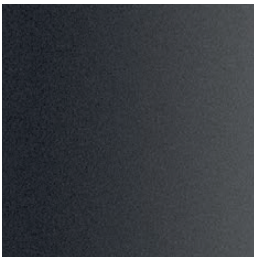
102 FT light grey



110 FT bronze



108 FT oxide

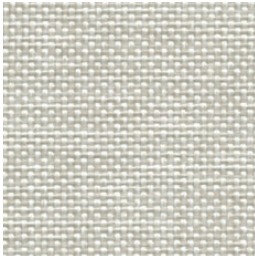


111 FT graphite

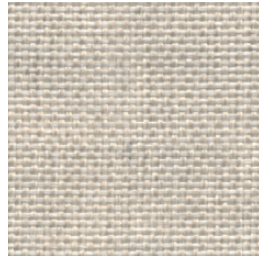
indoor

Cushions / confección

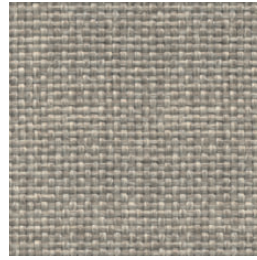
group 31 - dolce Crevin®



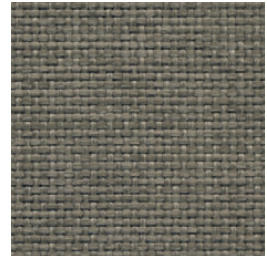
dolce 07



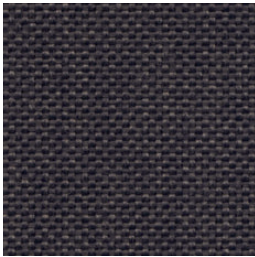
dolce 04



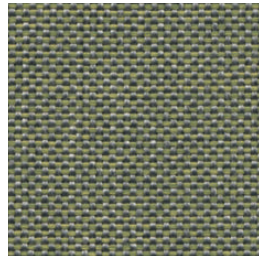
dolce 11



dolce 12



dolce 53

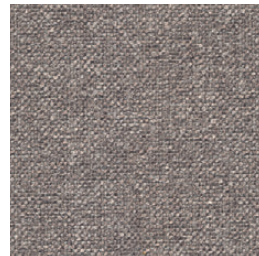


dolce 30

group 31 - ito Crevin®



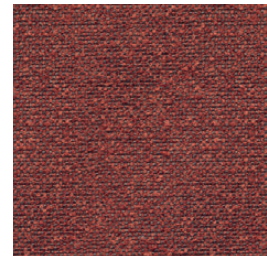
ito 05



ito 18



ito 12



ito 21



ito 20



ito 38



ito 45

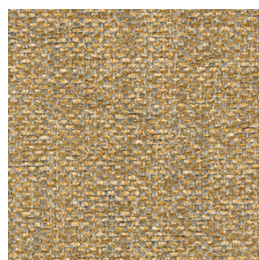
indoor

Cushions / confección

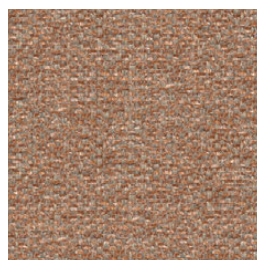
group 31 - salvia Crevin®



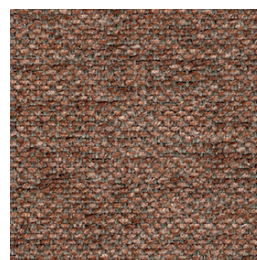
salvia 02



salvia 20



salvia 29



salvia 21



salvia 38

group 31 - sacco Crevin®



sacco 02



sacco 05



sacco 11

group 31 - valencia™ C5 heritage faux leather



valencia heritage 9050



valencia heritage 9051



valencia heritage 9052



valencia heritage 9055

indoor

Cushions / confección

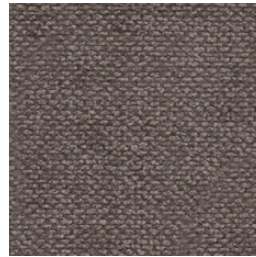
group 32 - velvety Crevin®



velvety 10



velvety 17



velvety 12



velvety 26



velvety 32

group 32 - indianskop Limonta



indianskop 15



indianskop 02



indianskop 04



indianskop 31



indianskop 46

expormim

Expormim S.A.
Pol. Ind. Jaime I
46640 Moixent (Valencia) Spain
+34 962 295 144/5
export@expormim.com
www.expormim.com

Expormim USA LLC
(212) 204-8572
usa@expormim.com
www.expormim.com

6/8

indoor

Cushions / confección

group 32 - clusone Limonta



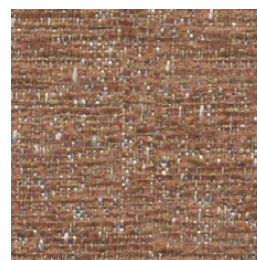
clusone 04



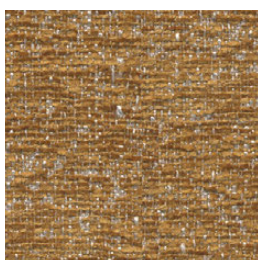
clusone 06



clusone 05



clusone 10

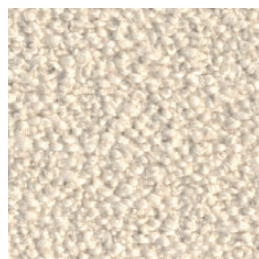


clusone 16

group 32 - ascendent reloaded Carlucci®



ascendent reloaded 094



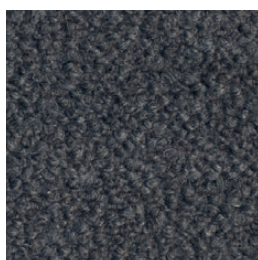
ascendent reloaded 070



ascendent reloaded 071



ascendent reloaded 030



ascendent reloaded 093



ascendent reloaded 022

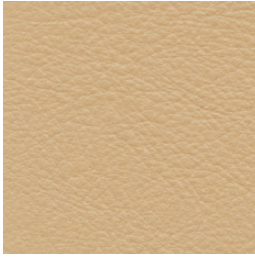


ascendent reloaded 040

indoor

Cushions / confección

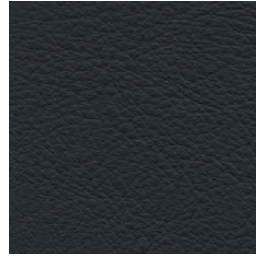
group 33 - elmosoft Elmo® leather



elmosoft 22024



elmosoft 33004



elmosoft 99999