

Maia

Relax armchair

by Patricia Urquiola

kettal

Relax armchair

Designer
Patricia Urquiola

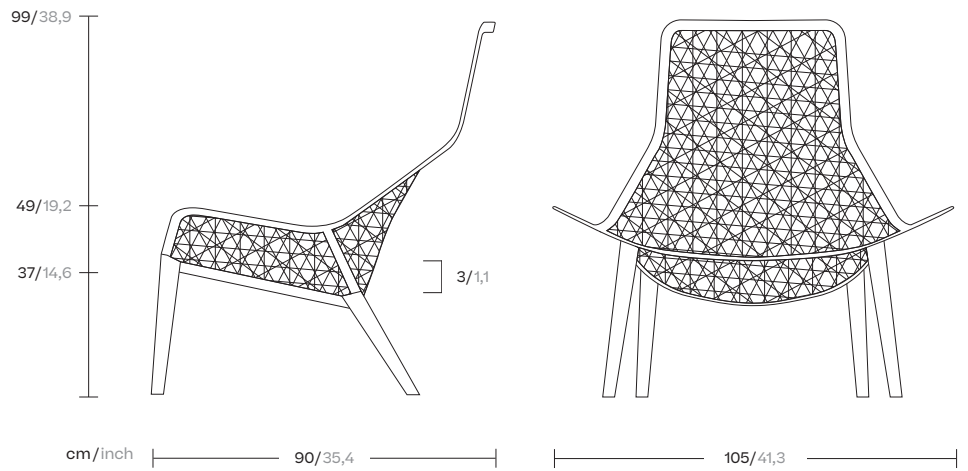
Collection
Maia

Reference
KS6500400

1/5

Like an architecture that is in keeping with its surroundings, the Kettal Maia, collection designed by Patricia Urquiola has a natural lightness and elegance. The design of the artisan braiding, the sturdiness of the aluminium frame and the new, Porotex and chenille fabric collection create a combination that oozes energy.

cm/inch



kettal

Relax armchair

Designer
Patricia Urquiola

Collection
Maia

Reference
KS6500400

2/5

Materials

Synthetic Fiber

Antioxy, Heavy Load, Resistant
En-1421, Kettalize-It, Anti-
Scratch, Easy Clean, Flame
Retardant M1, Eco Friendly
Ecoembes Recycling Process

Fabric

Heavy Load 100.000 Cycles,
Heavy Load Resistant 1000
Decitex, Kettalize-It, Resist
U.V. En-581-4, Easy Clean,
Abrasion, Resistance 30.000
Cycles, Quickdry

Teak

Eco-friendly, A-grade

Aluminium

Antioxy, Heavy Load, Resistant
En-1421, Kettalize-It, Anti-
Scratch, Easy Clean, Flame
Retardant M1, Eco Friendly
Ecoembes Recycling Process

Rope

Antioxy, Resist U.V, En-581-4, Easy
Clean

Maintenance

Clean with mild soap using
sponge or cloth. Be gentle
while cleaning, do not scrub
aggressively the fabric. Once
cleaned please make sure you
remove soap excess.

In case of aggressive stains
clean with diluted household
bleach.

Clean stains promptly. The
longer it remains, more difficult
will be to remove.

Once cleaned the fabric steam
iron the fabric. Just use steam,
be carefull NOT placing the
iron directly in the fabric it will
get damage.

Legs Finishes

Teak



Teak
904

Weaving Options

Fibre



White



Chestnut

Weaving Options

Rope



Marengo

Relax armchair

Designer
Patricia Urquiola

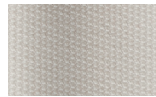
Collection
Maia

Reference
KS6500400

4/5

Seat Cushion & Kidney Pillow

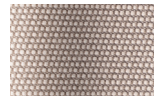
Terrain Laminate Fabrics



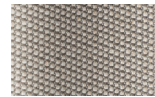
White Cliffs
290



Dry Sand
285



Porous Grey
291



Limestone
292



Fog
289



Deer
286



Wet Sand
287



Cobblestone
302



Cyprus Umber
301



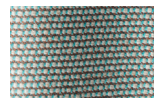
Loam
297



Charcoal
293



Arctic
295



Fjord
248



Cerulean
314



Caribbean
298



Atlantic
311



Rainforest
312



Lagoon
249



Cedar
288



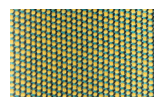
Moss
296



Olive
313



Autumn
315



Summer Sky
317



Golden Sand
303



Flamma
304



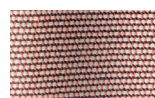
Sunrise
299



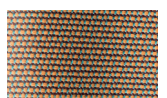
Saffron
305



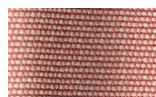
Burnt Sienna
306



Ash Rose
294



Cooper
316



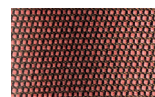
Dusk Pink
307



Flamingo
310



Coral
309



Sandstone
308

Relax armchair

Designer
Patricia Urquiola

Collection
Maia

Reference
KS6500400

5/5

Kidney Pillow

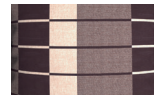
Geometric No Laminate Fabrics



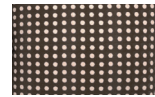
Umbra Brown
192



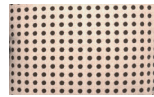
Dash Brown
162



Shade Brown
152



Dots Brown
142



Dots Light Brown
147



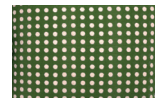
Umbra Green
191



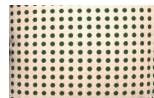
Dash Green
161



Shade Green
151



Dots Green
141



Dots Light Green
146



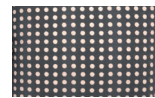
Umbra Grey
193



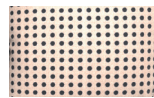
Dash Grey
163



Shade Grey
153



Dots Grey
143



Dots Light Grey
148



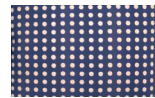
Umbra Blue
190



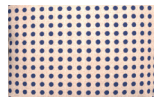
Dash Blue
160



Shade Blue
150



Dots Blue
140



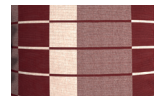
Dots Light Blue
145



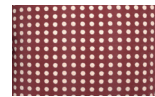
Umbra Red
194



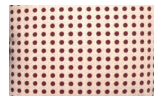
Dash Red
164



Shade Red
154



Dots Red
144



Dots Light Red
149