

Altar

Dining table 220 x 94,
by Miguel Milá

kettal

Dining table

220 x 94

Designer
Miguel Milá

Collection
Altar

Reference
KSA400200

1/3

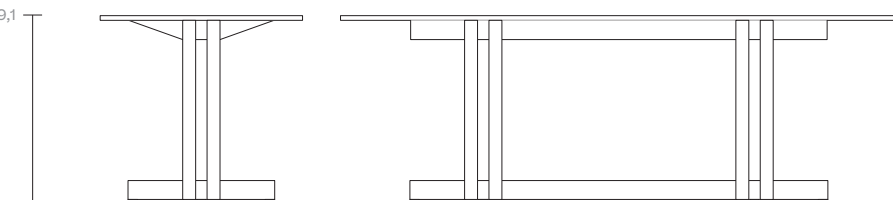
Miguel Milá designed this table in the mid-sixties as an altar for his wedding. It later became a table for everyday use, but was never produced.

As if he were a master craftsman, Miguel Milá designed this piece based on the heart of simplicity and efficiency. Its shape hides its complexity, but at the same time reveals the wood's own character, giving it life and prominence. Its constructive logic makes it strong enough in terms of structure, but formally a beautiful piece.

The beauty of logic and common sense understands neither time nor trend.

cm/inch

74/29,1



cm/inch

94/37

220/86,6



kettal

Dining table

220 x 94

Designer
Miguel Milá

Collection
Altar

Reference
KSA400200

2/3

Materials

Teak
Eco-friendly, A-grade

Aluminium
Antioxy, Heavy Load, Resistant
En-1421, Kettalize-It, Anti-
Scratch, Easy Clean, Flame
Retardant M1, Eco Friendly
Ecoembes Recycling Process

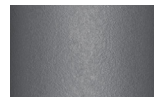
Marble
Antioxy, Mold resistant, Easy
Clean, Resist U.V., X-Temperature

Table Top Colour

Terrain Coatings



Slate Stone
01C



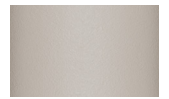
Mysty Smoke
02C



Ash
03C



Bone
04C



Tuff
05C



Wet Stone
06C



Sand Dune
07C



Dry Clay
08C



Arabica
09C



Sepia
19C



Rose Canyon
16C



Blossom
20C



Ruby Dust
18C



Sunset Glow
17C



Terrarosa
15C



Terracota
14C



Amber
13C



Ginger Root
12C



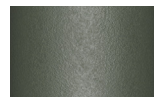
Desert Storm
11C



African Savannah
10C



Spring Meadow
28C



Kombu
29C



Forest Stream
27C



Sea Moss
26C



Glacier Ice
25C



Polar Sky
24C



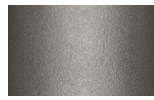
Nightfall
23C



Indigo
22C



Wild Lupin
21C



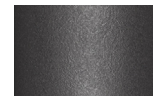
Galena
33C



Bronze
30C



Corten
31C



Manganese
32C

Table Top Colour

Other



Marble
079



Teak
904

Dining table

220 x 94

Designer
Miguel Milá

Collection
Altar

Reference
KSA400200

3/3

Maintenance

Aluminium

Protect surfaces with barrier elements like film, paper, and peelable lacquers before placement and handling. If accidental contamination or splashing of strong alkalis or acids occurs, wash the affected area with a large amount of clean water, especially cut-outs or holes and cavities.

Teak

We recommend treating the wood with sealer every three months, or more frequently in the case of hotel and catering establishments. To restore the teak to its original appearance, sand the entire surface and apply the sealer.

Marble

Clean only with a soft cloth, warm water and pH neutral detergent. Do not use: acids, ammonia, abrasive powders, window cleaners and so on. Any substance with an acid pH will damage marble: lemon juice, wine, etc. Marble is treated with a waterproof sealant to protect it from damp and stains (as long as they are cleaned immediately); however, this sealant naturally wears off over time. We recommend treating the marble with sealant every three months, more frequently in the case of hotel and catering establishments.

Legs Finish

Wood



Wood
(Untreated)