

outdoor

# Livit

## Double footstool / banqueta doble

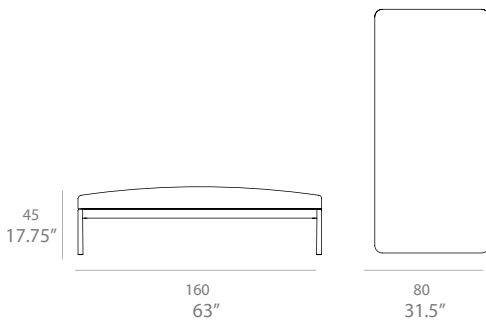
Lievore Altherr Molina 2016

C480



Double footstool with structure made of high resistance aluminum profile and legs of injected aluminum, finished with polyester powder. Possibility of customization through a wide variety of technical fabrics completely suitable for outdoor use. Removable upholstered cover.

Banqueta doble con estructura en perfilaría de aluminio de alta resistencia y patas en inyección de aluminio, acabado en pintura de polvo de poliéster. Posibilidad de personalización mediante un amplia variedad de tejidos totalmente aptos para exteriores. Tapicería desenfundable.



### Shipment details

Qty	1 footstool (1 box)
Volume	0,70 m3 / 24.7 ft3
Gross weight	32 kg / 71 lb
Net weight	26 kg / 57 lb
Item dimensions (width x depth x height)	160 x 80 x 45 cm 63" x 31.5" x 17.75"
COM (1, 40 - 1,50 m / 54"-59")	2,4 m / 2.6 yd

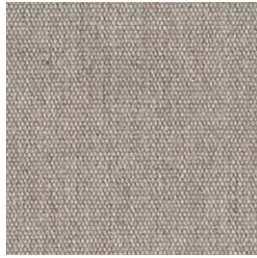
outdoor

upholstered / tapizado

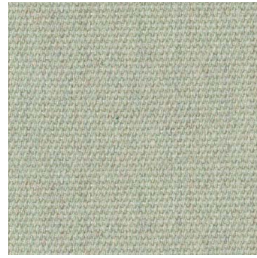
group 12 - heritage Sunbrella®



heritage papyrus



heritage ash



heritage moss



heritage leaf

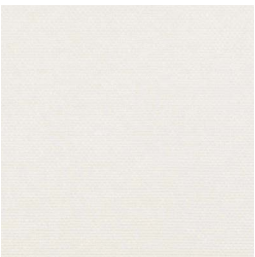


heritage pumpkin

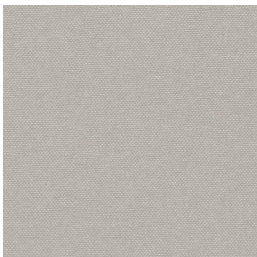


heritage garnet

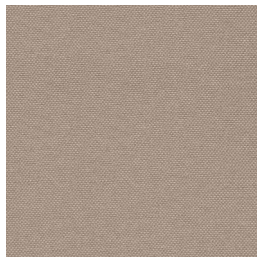
group 12 - silvertex™



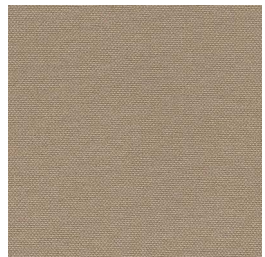
silvertex ice



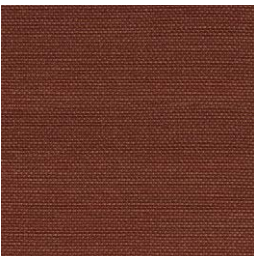
silvertex macadamia



silvertex sandstone



silvertex taupe



silvertex umber



silvertex teal



silvertex citrus

**expormim**

Expormim S.A.  
Pol. Ind. Jaime I  
46640 Moixent (Valencia) Spain  
+34 962 295 144/5  
export@expormim.com  
www.expormim.com

Expormim USA LLC  
(212) 204-8572  
usa@expormim.com  
www.expormim.com

2/5

outdoor

upholstered / tapizado

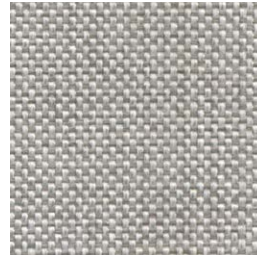
group 12 - dolce Crevin®



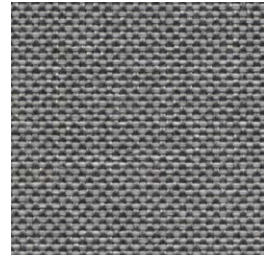
dolce 07



dolce 16



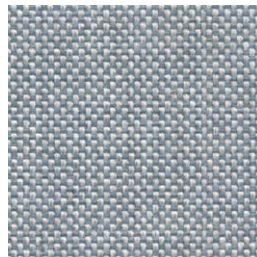
dolce 80



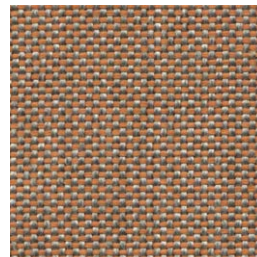
dolce 51



dolce 53



dolce 43



dolce 24

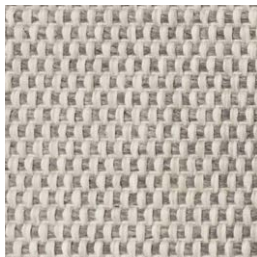


dolce 30

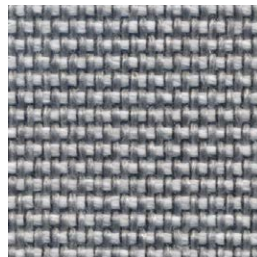
group 12 - strada Crevin®



strada 07



strada 75



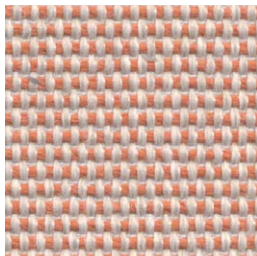
strada 51



strada 83



strada 43



strada 29



strada 32

**expormim**

Expormim S.A.  
Pol. Ind. Jaime I  
46640 Moixent (Valencia) Spain  
+34 962 295 144/5  
export@expormim.com  
www.expormim.com

Expormim USA LLC  
(212) 204-8572  
usa@expormim.com  
www.expormim.com

3/5



outdoor

upholstered / tapizado

group 13 - bora bora Crevin®



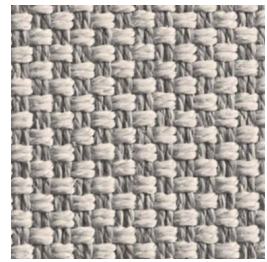
bora bora 99



bora bora 07



bora bora 08



bora bora 11

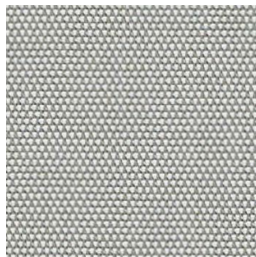


bora bora 42

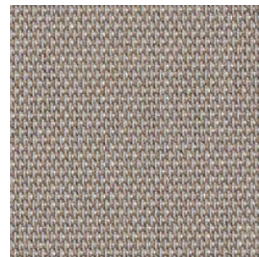


bora bora 47

group 13 - sling Sunbrella®



sling sailing seagull



sling sailing space



sling logan graphite

**expormim**

Expormim S.A.  
Pol. Ind. Jaime I  
46640 Moixent (Valencia) Spain  
+34 962 295 144/5  
export@expormim.com  
www.expormim.com

Expormim USA LLC  
(212) 204-8572  
usa@expormim.com  
www.expormim.com

4/5

legs / patas

metallic finishes / metales



100 FT white  
fine textured



102 FT light grey  
fine textured



111 FT graphite  
fine textured



108 FT oxide  
fine textured



109 FT champagne  
fine textured



110 FT bronze  
fine textured



113 FT sage  
fine textured