

ORIGIN

SIDE TABLE

REF.: 79158



Materials

Powder coated aluminum frame Top in aluminum, porcelain or compact

Dimensions

Length x width x height:

50,5 x 41,5 x 43,5 cm./ 19.9 x 16.3 x 17.1 in.

Weight aluminum table top: 16,6 Kg/ 36.6 lb

Weight porcelain table top: 19 Kg/ 41.9 lb

Weight compact HPL table top: 16,4Kg/ 36.2 lb

Volume: 0,1 m³.

Finish

Powder coated aluminum

Colour:

Grey
met. 56



Mineral White
34



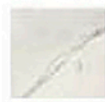
Porcelain

Colour:

Natural
white 81



Veined off
white. 85



Ochre
grey 87



Lava
grey 82



Basalt
grey 86



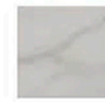
HPL

Colour:

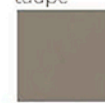
Beige



Marbled
white



Solid
taupe



Black



Wood



Solid
white



Fecha: 11-11-2023