

Milos upholstered lounge chair

by Jean-Marie Massaud

The Milos collection is the fruit of **Vondom's first collaboration with French designer Jean-Marie Massaud**. An example of how simplicity and functionality can be combined to create an elegant and comfortable outdoor furniture collection. Characterised by soft curves, this collection focuses on comfort. A collection that won the Red Dot Design Award 2024.



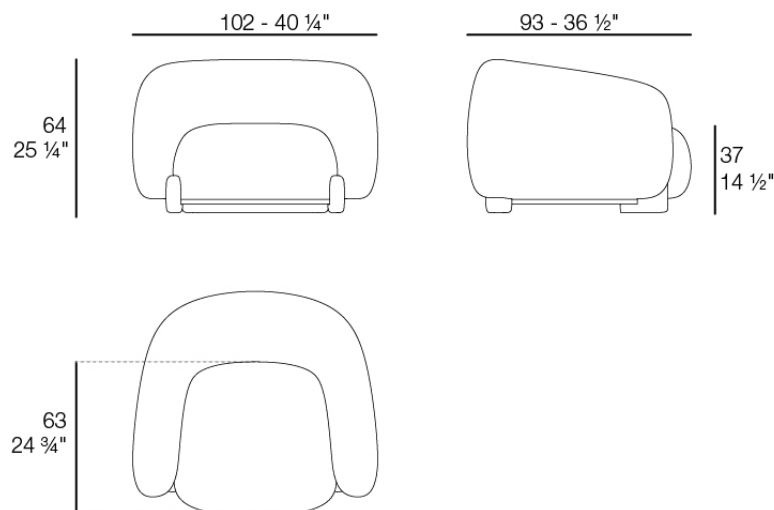
Info

Description

The lounge chair is a true example of Massaud's excellence in the world of design. In its creation, it fuses the versatility of flexible polyurethane foam with the inherent elegance of iroko wood in its legs.

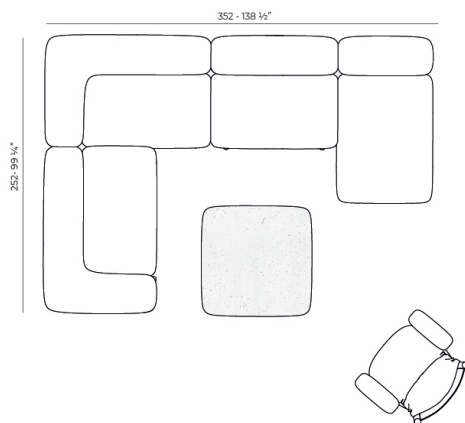
This design integrates the highest quality solutions and materials, adapted to withstand outdoor conditions, without compromising the cosy warmth and comfort expected of an indoor armchair.

Weight: 46 Kg

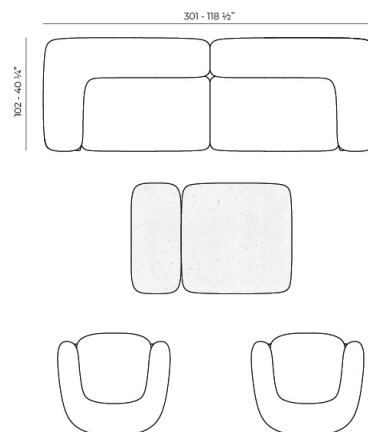


MILOS Butaca Tapizada
MILOS Upholstered Armchair
Ref. 70026

Combinations



- 2 x 70002 Sofá Brazo Derecho XL - Sectional Sofa Right XL
- 1 x 70004 Sofá Módulo Central M - Sectional Sofa Armless M
- 1 x 70011 Sofá Chaise Lounge - Sectional Chaise Lounge
- 1 x 70001 Butaca Madera - Wood Armchair
- 1 x 70016 Mesa Centro 100 x 100 - Low Table 39 1/4 x 39 1/4"



- 1 x 70002 Sofá Brazo Derecho XL - Sectional Sofa Right XL
- 1 x 70003 Sofá Brazo Izquierdo XL - Sectional Sofa Left XL
- 2 x 70026 Butaca Tapizada - Upholstered Armchair
- 1 x 70016 Mesa Centro 100 x 100 - Low Table 39 1/4 x 39 1/4"
- 1 x 70017 Mesa Centro 100 x 45 - Low Table 39 1/4 x 17 3/4"

Finishes

finishes

POLYURETHANE

Ref. 70026

Furniture made of flexible polyurethane injected cold. This material possesses a high resilience and durability.

fabric

GLAD

Ref. 70026CO



oro 1031



ocre 1051



sunset 1020



delhi 1038



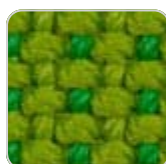
lima 1030



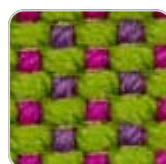
aguacate 1028



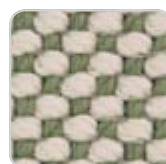
caribe 1004



bosc 1029



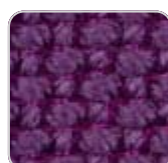
artemisa 1027



oasis 1007



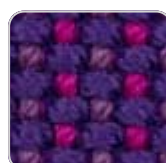
oceano 1005



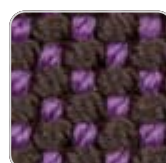
pruna 1045



noa 1026

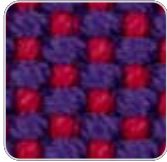


berry 1021



amatista 1011

VONDOM



vera 1019



afrodita 1013



grana 1046



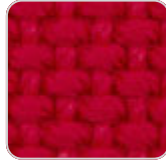
bacco 1034



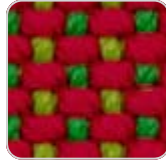
dahlia 1035



wine 1012



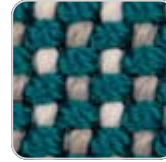
foc 1052



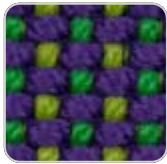
hestia 1014



turquoise 1053



niord 1015



masai 1018



ultramar 1002



aquamarina 1003



esmeralda 1016



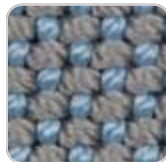
night 1024



galan 1025



eclipse 1023



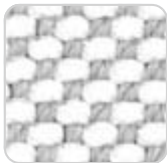
perla 1006



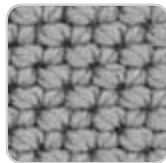
calipso 1017



snow 1041



iceberg 1037



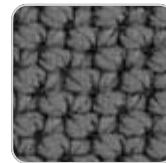
steel 1042



moon 1040



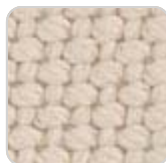
granito 1008



grey 1043



anthracite 1044



ecru 1047



dessert 1033



taupe 1048



terra 1039



duna 1009



moka 1010



chocolate 1050

Soft and cozy fabric suitable for indoor and outdoor use.

VARM

VONDOM

Ref. 70026CO



black+crema 1066



purjai+crema 1065



green+crema 1064



blue jeans 1071



crema+blue 1063



crema+gray 1062



tortora+crema 1070



crema+ purjai red
1061



purjai red 1069



crema+modo green
1060



crema 1068



blue+crema 1067

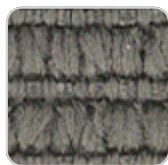
Soft and cozy fabric suitable for indoor and outdoor use.

HYGGE

Ref. 70026CO



black 1082



gray 1081



crema 1080

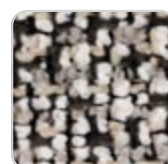
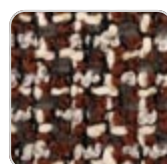
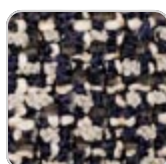
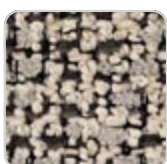


blue 1083

Soft and cozy fabric suitable for indoor and outdoor use.

KROLLET

Ref. 70026CO



VONDOM

krollet crema 1922

krollet black 1926

krollet blue notte 1925

krollet purjai 1924

krollet white 1921



krollet verde 1923

Soft and cozy fabric suitable for indoor and outdoor use.

Ambients

