

indoor

Team Shelf / estantería

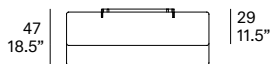
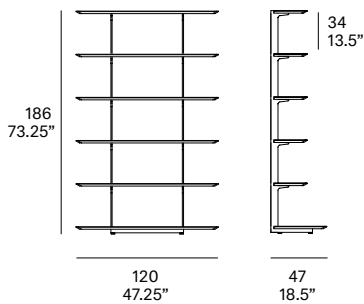
Mario Ruiz, 2015/2021

T852 120



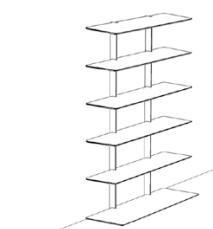
Furniture system made of solid wood from European oaks and metallic frame. Shelf width: 47.25". The collection is also available in a lacquered version (MDF). Adjustable PA spacers.

Sistema de mobiliario fabricado en madera maciza de roble europeo y estructura metálica. Ancho de estantería: 120 cm. La colección también está disponible en versión lacada (MDF). Conteras regulables de inyección de PA.



Shipment details

Qty	1 shelf (4 boxes)
Volume	0,58 m ³ / 20.5 ft ³
Gross weight	73 kg / 160.9 lb
Net weight	66 kg / 145.5 lb
Item dimensions (width x depth x height)	120 x 47 x 186 cm 47.25" x 18.5" x 73.25"



expormim

Expormim S.A.
Pol. Ind. Jaime I
46640 Moixent (Valencia) Spain
+34 962 295 144/5
export@expormim.com
www.expormim.com

Expormim USA LLC
(212) 204-8572
usa@expormim.com
www.expormim.com

1/3

indoor

solid wood / madera



W01 natural oak



W03 light oak



W02 white stained



W04 black stained

Lacquered

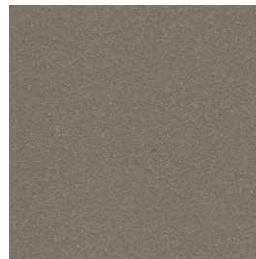
textured lacquers



LT02 light grey



LT09 champagne



LT10 bronze

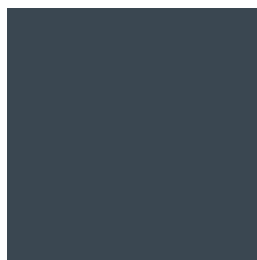


LT11 graphite

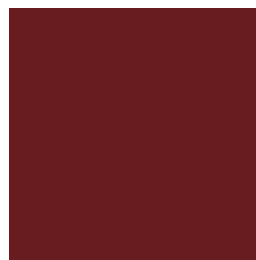
lacquers



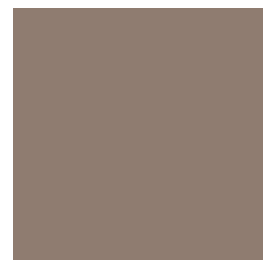
L17 forest green



L16 navy blue



L14 japanese red



L5 taupe

indoor

Metallic structure / estructura metálica



102 FT light grey
fine textured



109 FT champagne
fine textured



110 FT bronze
fine textured



108 FT oxide
fine textured



111 FT graphite
fine textured