

indoor

Frames

Round coffee table / centro redondo

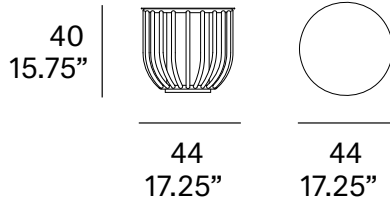
Jaime Hayon, 2014

T558 44



Round coffee table made of peeled and tinted natural rattan of 0.7" diameter. Finished with a three step coating (dye, base coat and top coat) highly resistant to solar radiation thanks to UV filters. Tabletop and central leg made of lacquered steel plate.

Centro redondo fabricado en rattan natural pelado y tintado de 18 mm de calibre. Acabado con recubrimiento en tres fases (tinte, fondo y acabado) con filtros UV que lo hacen altamente resistente a la radiación solar. Tapa y pie central fabricados en plancha de acero lacada.



Shipment details

| | |
|---|---|
| Qty | 1 coffee table (1 box) |
| Volume | 0,11 m ³ / 3.9 ft ³ |
| Gross weight | 15 kg / 33.1 lb |
| Net weight | 12 kg / 26.5 lb |
| Item dimensions (width x depth x height) | 44 x 44 x 40 cm 17.25" x 17.25" x 15.75" |

Rattan

Natural_matt



R10 natural

Tinted_matt



R30 oak



R03 noce



R05 grigio



R23 french grey



R06 verde oliva



R08 azzurro



R09 nero

Tinted_gloss



R31 cognac



R32 antique brown



R33 alpine green

Lacquered_matt



R02 bianco



R22 clay



R14 japanese red



indoor

frame and top/tapa y pie

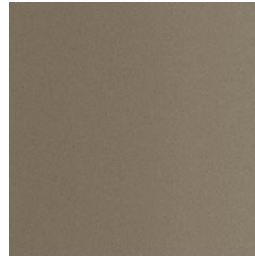
metallic finishes- fine textured



124 FT linen



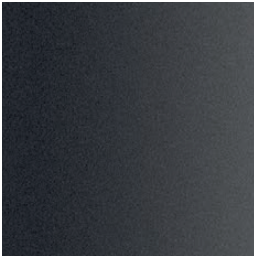
102 FT light grey



110 FT bronze



108 FT oxide



111 FT graphite