

indoor

# Team Shelf / estantería

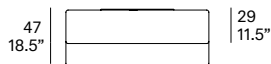
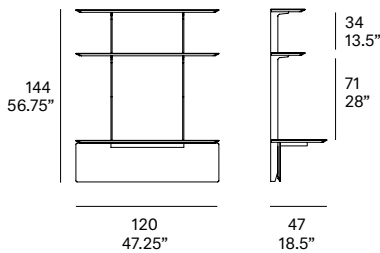
Mario Ruiz, 2015/2021

T856 120 47



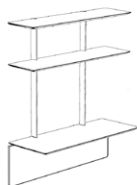
Furniture system made of solid wood from European oaks and metallic frame. Shelf width: 47.25". Desk depth: 18.5". The collection is also available in a lacquered version (MDF).

Sistema de mobiliario fabricado en madera maciza de roble europeo y estructura metálica. Ancho de estantería: 120 cm. profundidad escritorio: 47 cm. La colección también está disponible en versión lacada (MDF).



## Shipment details

Qty	1 desk (4 boxes)
Volume	0,60 m <sup>3</sup> / 21 ft <sup>3</sup>
Gross weight	47 kg / 103.5 lb
Net weight	42 kg / 92.5 lb
Item dimensions (width x depth x height)	120 x 47 x 144 cm 47.25" x 18.5" x 56.75"



**expormim**

Expormim S.A.  
Pol. Ind. Jaime I  
46640 Moixent (Valencia) Spain  
+34 962 295 144/5  
export@expormim.com  
www.expormim.com

Expormim USA LLC  
(212) 204-8572  
usa@expormim.com  
www.expormim.com

1/3

**Shelves**

**solid wood**



W01 natural oak



W03 light oak

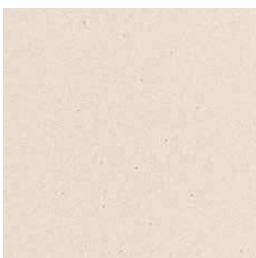


W02 white stained

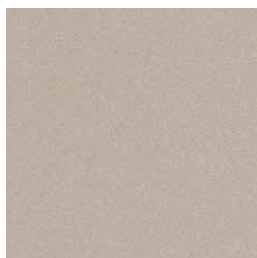


W05 dark stained

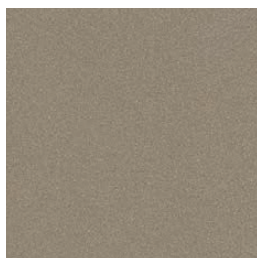
**textured lacquers**



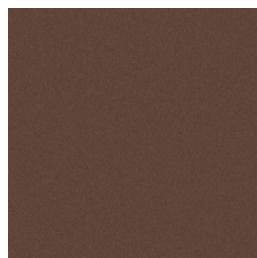
LT24 linen



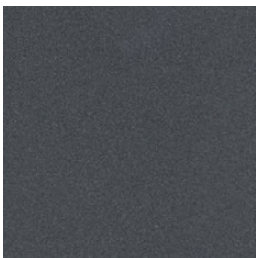
LT09 champagne



LT10 bronze

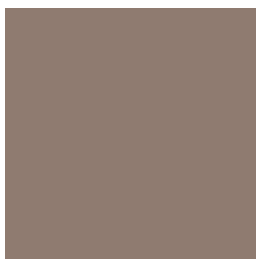


LT26 sable brown



LT11 graphite

**lacquers**



L5 taupe

indoor

**Metallic structure**

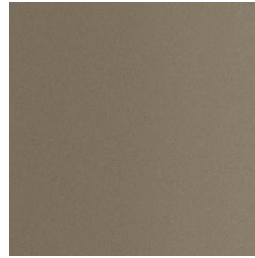
**metallic finishes- fine textured**



124 FT linen



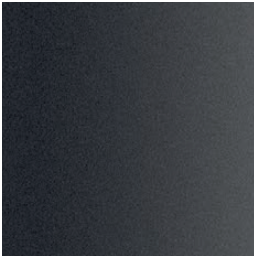
102 FT light grey



110 FT bronze



108 FT oxide



111 FT graphite