

indoor

Loop

Swivel dining armchair with 5 casters / sillón giratorio con 5 ruedas

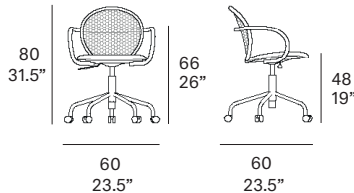
Norm Architects, 2023/2024

T002 SF



Dining armchair with structure made of peeled and tinted natural rattan of 28 mm/1.1" diameter. Metal legs with casters. Backrest manufactured in tinted natural wicker ("octagonal wicker"). Finished with a three step water-based coating (dye, base coat and top coat) highly resistant to solar radiation thanks to UV filters. Upholstered seat. Possibility of customization through a wide variety of high performance technical fabrics. · Gas height adjustment.

Sillón con estructura en rattan natural pelado y tintado de 28 mm de calibre. Patas metálicas con ruedas. Respaldo fabricado en rejilla natural tintada ("octagonal wicker"). Acabado con recubrimiento en tres fases (tinte, fondo y acabado) con filtros UV que lo hacen altamente resistente a la radiación solar. Los acabados utilizados son en base al agua. Asiento tapizado. Posibilidad de personalización mediante una amplia variedad de tejidos técnicos de altas prestaciones de uso. · Ajuste de altura de gas.



Shipment details

Qty	1 armchair (1 box)
Volume	0,36 m ³ / 12.7 ft ³
Gross weight	12,5 kg / 27.5 lb
Net weight (1 armchair)	8.5 kg / 18.7 lb
Box dimensions (approx.)	65 x 65 x 85 cm 25.5" x 25.5" x 33.4"
Item dimensions (width x depth x height)	60 x 60 x 80 cm 23.5" x 23.5" x 31.5"
COM (1, 40 - 1,50 m / 54"-59")	cushion: 0,70 m / 0.76 yd

Rattan

Natural_matt



R10 natural

Tinted_matt



R30 oak



R03 noce



R05 grigio



R23 french grey



R06 verde oliva



R08 azzurro



R09 nero

Tinted_gloss



R31 cognac



R32 antique brown



R33 alpine green



indoor

Legs / patas

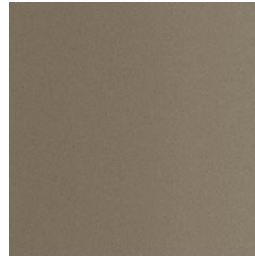
metallic finishes- fine textured



124 FT linen



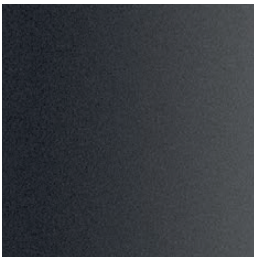
102 FT light grey



110 FT bronze



108 FT oxide

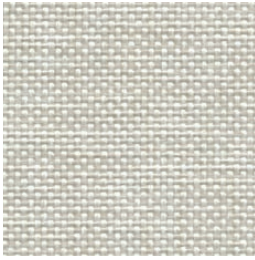


111 FT graphite

indoor

Cushions / confección

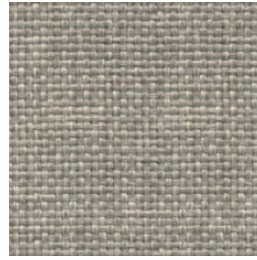
group 31 - dolce Crevin®



dolce 07



dolce 04



dolce 11



dolce 12



dolce 53



dolce 30

group 31 - ito Crevin®



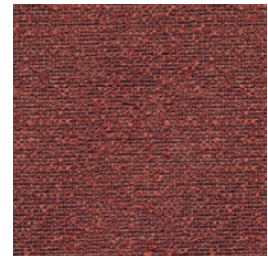
ito 05



ito 18



ito 12



ito 21



ito 20



ito 38



ito 45

indoor

Cushions / confección

group 31 - salvia Crevin®



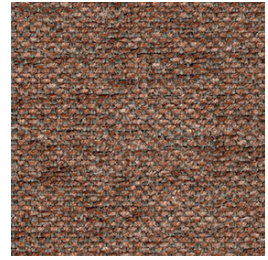
salvia 02



salvia 20



salvia 29



salvia 21



salvia 38

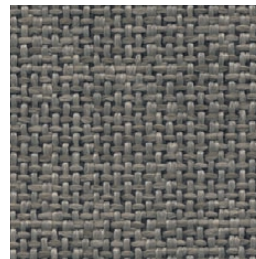
group 31 - sacco Crevin®



sacco 02



sacco 05



sacco 11

group 31 - valencia™ C5 heritage faux leather



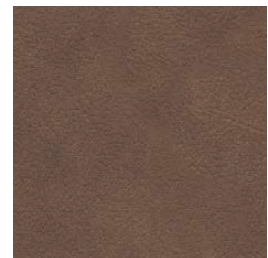
valencia heritage 9050



valencia heritage 9051



valencia heritage 9052



valencia heritage 9055

indoor

Cushions / confección

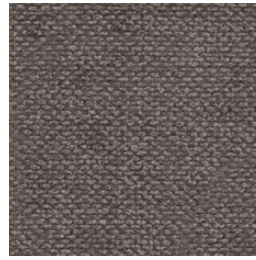
group 32 - velvety Crevin®



velvety 10



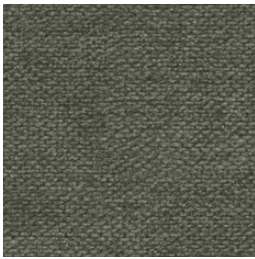
velvety 17



velvety 12



velvety 26



velvety 32

group 32 - indianskop Limonta



indianskop 15



indianskop 02



indianskop 04



indianskop 31



indianskop 46

expormim

Expormim S.A.
Pol. Ind. Jaime I
46640 Moixent (Valencia) Spain
+34 962 295 144/5
export@expormim.com
www.expormim.com

Expormim USA LLC
(212) 204-8572
usa@expormim.com
www.expormim.com

6/8

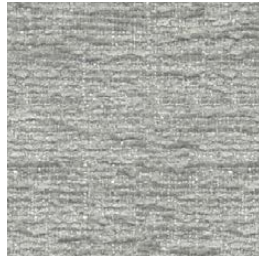
indoor

Cushions / confección

group 32 - clusone Limonta



clusone 04



clusone 06



clusone 05

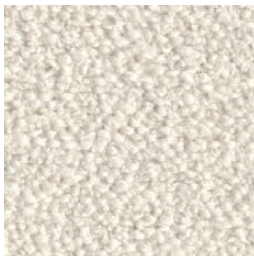


clusone 10



clusone 16

group 32 - ascendent reloaded Carlucci®



ascendent reloaded 094



ascendent reloaded 070



ascendent reloaded 071



ascendent reloaded 030



ascendent reloaded 093



ascendent reloaded 022



ascendent reloaded 040

indoor

Cushions / confección

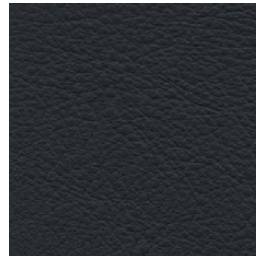
group 33 - elmosoft Elmo® leather



elmosoft 22024



elmosoft 33004



elmosoft 99999