

indoor

Atrivm indoor

Rectangular dining table / mesa rectangular

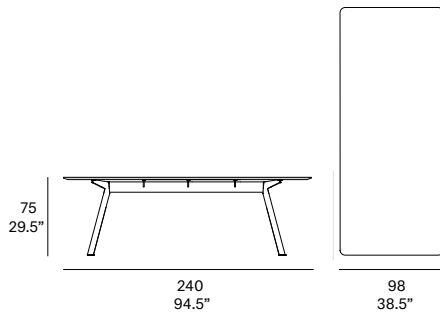
Manel Molina, 2020

T220 240



Tabletop made of solid wood from European oaks with 0.83" of section. Structure made of high resistance aluminum profile, finished with polyester powder. Legs made of solid wood profile from European oaks. The collection is also available in lacquered top version (MDF) and in European oak veneer top. Optional junction box with 2 sockets F CEE and 2 USB charger. Delivered unassembled.

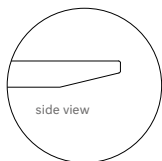
Tapa fabricada en madera maciza de roble europeo de 21 mm de sección. Estructura en perfilera de aluminio de alta resistencia, acabado en pintura de polvo de poliéster. Patas fabricadas en perfilera maciza de roble europeo. La colección también está disponible en versión lacada (MDF) y en tablero contrachapado de roble europeo. Caja de conexiones opcional con 2 enchufes F CEE y 2 cargadores USB. Se sirven desmontadas.



Shipment details

| | |
|---|--|
| Qty | 1 dining table (3 boxes) |
| Volume | 0,60 m ³ / 21.2 ft ³ |
| Gross weight | 92 kg / 202.8 lb |
| Net weight | 52 kg / 114.6 lb |
| Item dimensions (width x depth x height) | 240 x 98 x 75 cm 94.5" x 38.5" x 29.5" |

Tabletop options:



- solid wood top 21 mm/0.83" thick.
- veneered top 21 mm/0.83" thick.
- lacquered top 21 mm/0.83" thick.



*Position of the junction box. For sockets and plugs other than type F CEE, please check availability / Posición de la caja de conexiones. Para bases de enchufe y clavijas distintas al tipo F CEE consultar disponibilidad.

expormim

Expormim S.A.
Pol. Ind. Jaime I
46640 Moixent (Valencia) Spain
+34 962 295 144/5
export@expormim.com
www.expormim.com

Expormim USA LLC
(212) 204-8572
usa@expormim.com
www.expormim.com

1/3

indoor

Solid wood tabletop & frame / tapa y estructura madera maciza



W01 natural oak



W03 light oak



W02 white stained



W05 dark stained

Veneered tabletop & frame / tapa y estructura tablero chapado



W01 natural oak



W03 light oak



W02 white stained



W05 dark stained



expormim

Expormim S.A.
Pol. Ind. Jaime I
46640 Moixent (Valencia) Spain
+34 962 295 144/5
export@expormim.com
www.expormim.com

Expormim USA LLC
(212) 204-8572
usa@expormim.com
www.expormim.com

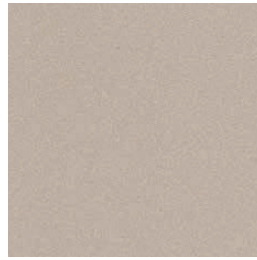
indoor

Lacquered tabletop & frame/ tapa y estructura lacada

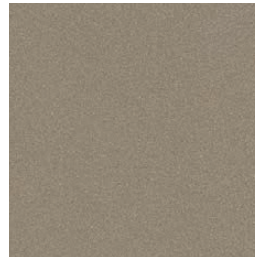
textured lacquers



LT24 linen



LT09 champagne



LT10 bronze

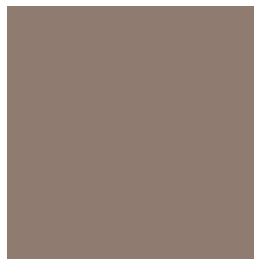


LT26 sable brown



LT11 graphite

lacquers



L5 taupe

Structure/ estructura

Metallic finishes / metales



601 FT black