

Vases table 210x100x73

by JM Ferrero

VASES Collection, is made up of flowerpots, furniture and lighting designed by the Valencian designer JM Ferrero. It's shapes were inspired by diamond cutting, producing pieces of clear-cut shapes and great style, creating a big visual impact.

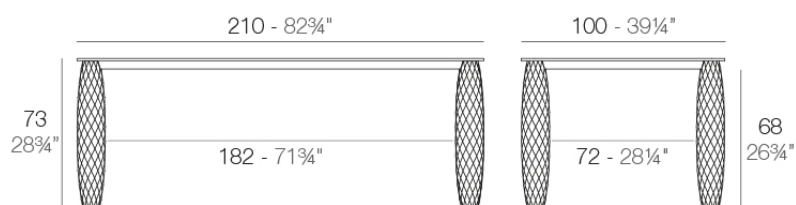


Info

Description

Made of polyethylene resin by rotational moulding. 100% Recyclable. Item suitable for indoor and outdoor use. Available in different finishes.

Weight: 54.31 Kg



VASES Mesa 210x100
VASES Dinning Table 82 3/4"x39 1/4"

Finishes

finishes

LACQUERED

Ref. 47079F



white 3101



ecru 3103



tortora 3104



cream 3117



garnet 3113



brown 3125



green 3116



blue 3118



gray 3105



anthracite 3106



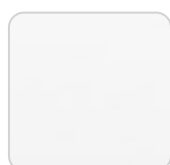
black 3102

Lacquered Polyethylene

tabletops

HPL

Ref. 47079



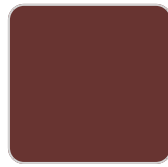
VONDOM

orange



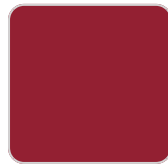
cream 2017

white 201



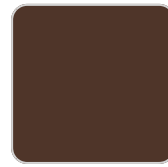
garnet 2015

ecru 2003



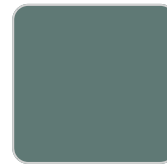
red

tortora 2004



brown 2008

gray 2005



green 2016



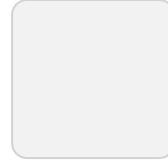
blue 2018



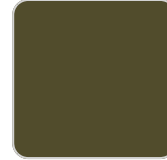
anthracite 2006



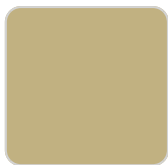
black 2002



ice 2101



khaki



beige

HPL black edge

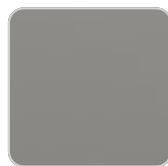
tabletops

Solid Core

Ref. VVAR00817



ecru stone



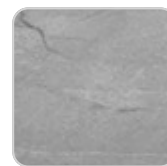
smoked



tortora stone



black stone



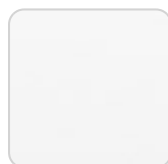
gray stone



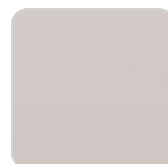
white stone



green stone



white (white edge)



ecru



tortora



VONDOM

cream



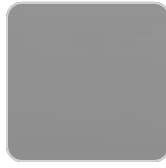
green

camel



blue

clay



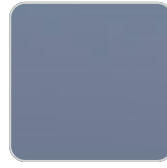
gray

garnet



anthracite

brown



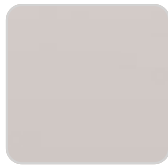
ocean

HPL

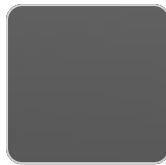
Ref. VVAR00817



white(black edge)



ecru(black edge)



black(black edge)

HPL black edge

Solid Core wood

Ref. VVAR00817



oak1



oak2

Ambients

