

LEGACY

SQUARE SIDE TABLE

REF.: 79356



Materials

Powder coated aluminium frame. Top in aluminium, porcelain or compact.

Dimensions

Length x width x height:

24 x 24 x 18.5 in.

Weight aluminium table top: 33.1 lb.

Weight porcelain table top: 48.1 lb.

Weight compact HPL table top: 37.1 lb.

Volum: 0.24 m³.

Finish

Powder coated aluminium

Colour:

Grey
met. 56



Mineral
White 34



Porcelain

Colour:

Natural
white 81



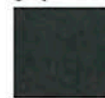
Lava
grey 82



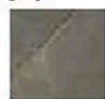
Veined off
white. 85



Basalt
grey 86



Ochre
grey 87



HPL

Colour:

Beige



Black



Marbled
white



Wood



Solid
taupe



Solid
white



Fecha: 10-11-2023