

Side Table Ø48
by Doshi Levien

kettal

Side table Ø48

Designer
Doshi Levien

Collection
Cala

Reference
KS2701100

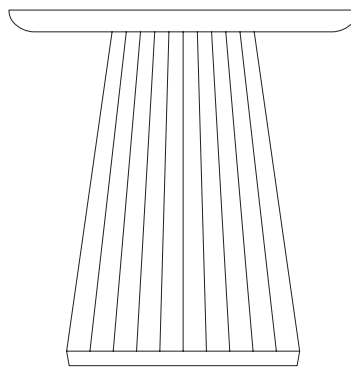
1/3

The Cala side table, designed by Doshi Levien, is a stunning piece of furniture that stands out for its unique and modern design.

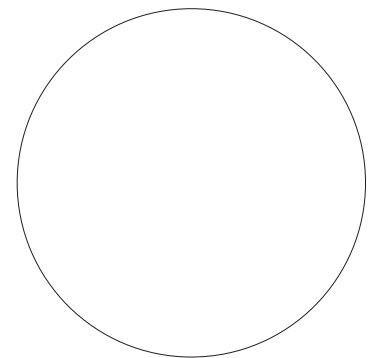
The base is made from high-quality aluminum and is available in a wide range of finishes.

cm/inch

49/19,2



cm/inch



48/18,8



kettal

Side table Ø48

Designer
Doshi Levien

Collection
Cala

Reference
KS2701100

2/3

Materials

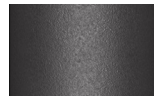
Teak
Teak A-Grade, Eco Friendly
Oeko-Tek

Marble
Antioxy, Mold resistant, Easy
Clean, Resist U.V., X-Temperature

Aluminium
Antioxy, Heavy Load, Resistant
En-1421, Kettalize-It, Anti-
Scratch, Easy Clean,
Flame Retardant M1, Eco Friendly
Ecoembes Recycling Process

Table Top / Base Colour Options

Terrain Coatings



Slate Stone
01C



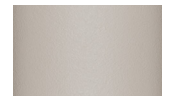
Mysty Smoke
02C



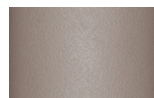
Ash
03C



Bone
04C



Tuff
05C



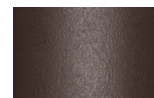
Wet Stone
06C



Sand Dune
07C



Dry Clay
08C



Arabica
09C



Sepia
19C



Rose Canyon
16C



Blossom
20C



Ruby Dust
18C



Sunset Glow
17C



Terrarosa
15C



Terracota
14C



Amber
13C



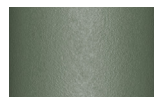
Ginger Root
12C



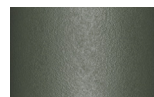
Desert Storm
11C



African Savannah
10C



Spring Meadow
28C



Kombu
29C



Forest Stream
27C



Sea Moss
26C



Glacier Ice
25C



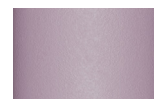
Polar Sky
24C



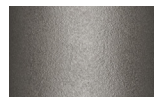
Nightfall
23C



Indigo
22C



Wild Lupin
21C



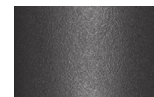
Galena
33C



Bronze
30C



Corten
31C



Manganese
32C

Side table Ø48


Designer
Doshi Levien

Collection
Cala

Reference
KS2701100

3/3

Other Characteristics

 Adjustable legs

Maintenance

Aluminium

Protect surfaces with barrier elements like film, paper, and peelable lacquers before placement and handling. If accidental contamination or splashing of strong alkalis or acids occurs, wash the affected area with a large amount of clean water, especially cut-outs or holes and cavities.

Teak

We recommend treating the wood with sealer every three months, or more frequently in the case of hotel and catering establishments. To restore the teak to its original appearance, sand the entire surface and apply the sealer.

Marble

Clean only with a soft cloth, warm water and pH neutral detergent. Do not use: acids, ammonia, abrasive powders, window cleaners and so on. Any substance with an acid pH will damage marble: lemon juice, wine, etc. Marble is treated with a waterproof sealant to protect it from damp and stains (as long as they are cleaned immediately); however, this sealant naturally wears off over time. We recommend treating the marble with sealant every three months, more frequently in the case of hotel and catering establishments.

Table Top Colour Options



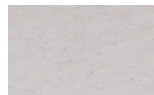
Teak
904



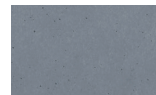
Marble
079

Other

Table Top Colour Options



Dolomite
373



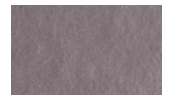
Indian Sapphire
371



Montana
377



Erinite
376



Black Diamond
374

Glaze



Smoky Quartz
370



Jasper
375



Obsidian
372