

indoor

# Talo indoor

## Round dining table / mesa redonda

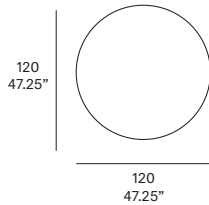
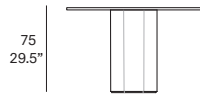
Altherr Désile Park, 2024

T701 R 120



Tabletop and frame made of solid wood from European oaks with 21 mm/0.83" of section. The collection is also available in lacquered version (MDF) and in European oak veneer. Delivered unassembled.

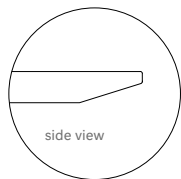
Tapa y estructura fabricada en madera maciza de roble europeo de 21 mm de sección. La colección también está disponible en versión lacada (MDF) y en tablero contrachapado de roble europeo. Se sirven desmontadas.



### Shipment details

Qty	1 table (2 boxes)
Volume	0,43 m <sup>3</sup> / 15.1 t <sup>3</sup>
Gross weight	110 kg / 242.5 lb
Net weight	81 kg / 191.8 lb
Item dimensions (width x depth x height)	120 x 120 x 75 cm 47.25" x 47.25" x 29.5"

### Tabletop options:



- lacquered top 21 mm/0.83" thick.
- veneered top 21 mm/0.83" thick.
- solid wood top 21 mm/0.83" thick.

**expormim**

Expormim S.A.  
Pol. Ind. Jaime I  
46640 Moixent (Valencia) Spain  
+34 962 295 144/5  
export@expormim.com  
www.expormim.com

Expormim USA LLC  
(212) 204-8572  
usa@expormim.com  
www.expormim.com

1/3

indoor

**Tabletop & Frame / tapa y estructura**

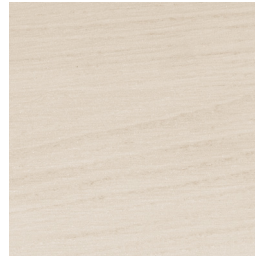
**solid wood / madera**



W01 natural oak



W03 light oak



W02 white stained



W05 dark stained

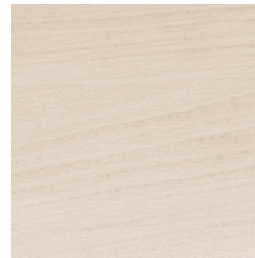
**veneered / contrachapado**



W01 natural oak



W03 light oak



W02 white stained

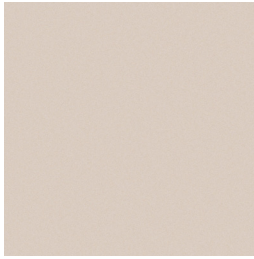


W05 dark stained

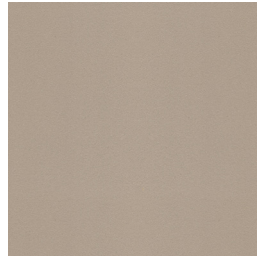
indoor

**Tabletop & Frame / tapa y estructura**

**textured lacquers**



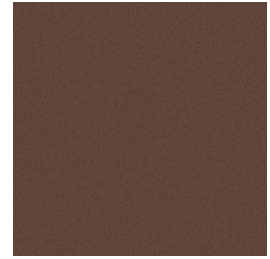
LT24 linen



LT09 champagne



LT10 bronze

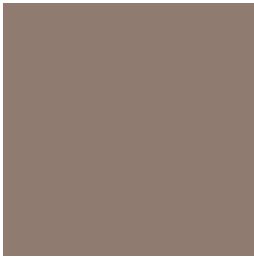


LT08 oxide



LT11 graphite

**lacquers**



L5 taupe