

Roll

Club chair

by Patricia Urquiola

kettal

Club chair

Designer
Patricia Urquiola

Collection
Roll

Reference
KS2300200

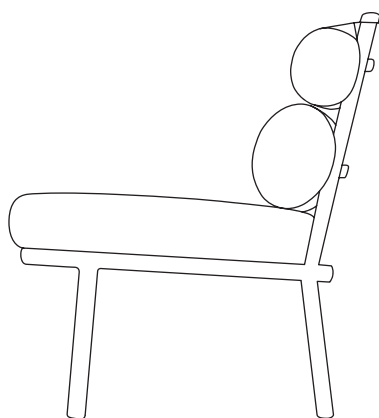
1/4

This ironical intervention on the conventional upholstery converts a regular backrest into two independent 'wraps' connected by colorful straps. A graphical aluminum structures frames the protagonist of this chair, the cushions.

cm/inch

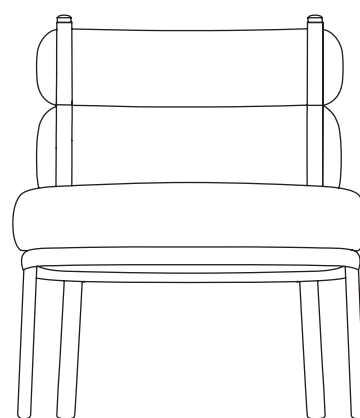
80/31,4
74/29,1

44/17,5



cm/inch

68/26,7



66/25,9



kettal

Club chair

Designer
Patricia Urquiola

Collection
Roll

Reference
KS2300200

2/4

Materials

Aluminium
Antioxy, Heavy Load, Resistant
En-1421, Kettalize-It, Anti-
Scratch, Easy Clean,
Flame Retardant M1, Eco Friendly
Ecoembes Recycling Process

Terrain Fabrics design by Doshi
Levien
100% Solution dyed Acrylic,
Warp & Weft Count Nm 2/34 -
Nm 6/34, Weight 400 g/m2, Oil
repellency 6, Colour fastness
Weathering 7-8, Light 7-8,
Martindale Abrasion test 30.000
cycles, Wyzenbeek Abrasion
test 22.500 cycles Double Rubs,
Fire Retardand, Dupont Teflon,
Anti-Mold

Maintenance

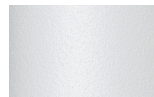
Clean with mild soap using
sponge or cloth. Be gentle
while cleaning, do not scrub
aggressively the fabric. Once
cleaned please make sure you
remove soap excess.

In case of aggressive stains
clean with diluted household
bleach.

Clean stains promptly. The
longer it remains, more difficult
will be to remove.

Once cleaned the fabric steam
iron the fabric. Just use steam,
be carefull NOT placing the
iron directly in the fabric it will
get damage.

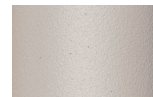
Frame Colour Options



Chalk
721



Bone
678



Tuff
103



Mist
773



Flint
734



London Clay
729



Mahogany
100



Carbon
737



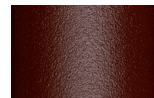
Lilac
104



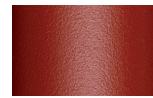
Feldspar
082



Sepia
088



Terra Rossa
087



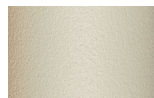
Magma
086



Terracota
085



Sahara
139



Camomile
106



Aquamarine
107



Cobalt
089



Indigo
094



Jade
091



Onyx
101



Juniper
092



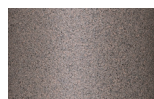
Amazon
102



Bronze
093



Corten
727



Claystone
741



Sand Storm
132



Pumice
131



Galena
105



Manganese
726

Club chair

Designer
Patricia Urquiola

Collection
Roll

Reference
KS2300200

3/4

Strap Colour Options

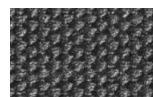
Strap



Caoba Straps
040



Green Straps
039



Marengo Straps
041

Club chair

Designer
Patricia Urquiola

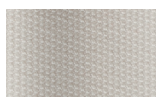
Collection
Roll

Reference
KS2300200

4/4

Seat/Back Cushion

Terrain Laminate Fabrics



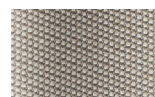
White Cliffs
290



Dry Sand
285



Porous Grey
291



Limestone
292



Fog
289



Deer
286



Wet Sand
287



Cobblestone
302



Cyprus Umber
301



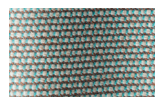
Loam
297



Charcoal
293



Arctic
295



Fjord
248



Cerulean
314



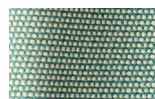
Caribbean
298



Atlantic
311



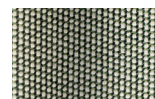
Rainforest
312



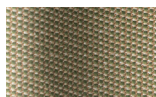
Lagoon
249



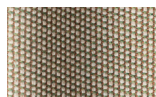
Cedar
288



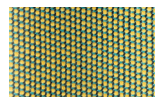
Moss
296



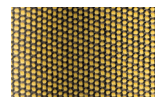
Olive
313



Autumn
315



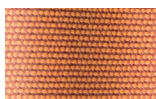
Summer Sky
317



Golden Sand
303



Flamma
304



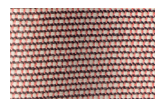
Sunrise
299



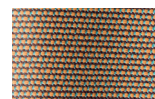
Saffron
305



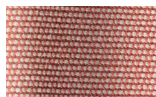
Burnt Sienna
306



Ash Rose
294



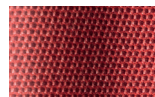
Cooper
316



Dusk Pink
307



Flamingo
310



Coral
309



Sandstone
308