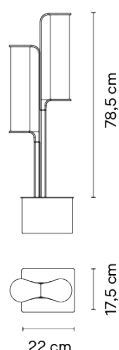
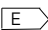


## Model Sheet



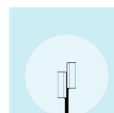
Finish	11 Black NCS S 8500-N
LED temperature color	2700 K
Dimming	DALI / Casambi / Push
Installation type	Built-in / Remote basic

Materials	Body: Aluminum Shade: Borosilicate
Light source	2 x LED STRIP 3,5W 150mA 
LED	CRI>90 990 lm 141 2700 K
Driver	Constant Current 300 220~240 V V 50~60 Hz HZ

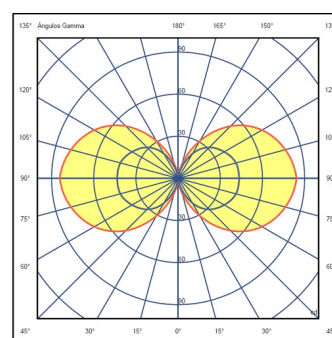
<input type="checkbox"/> Dimmable	<input checked="" type="checkbox"/> LED	<input checked="" type="checkbox"/> IP65
<input checked="" type="checkbox"/> 50-60Hz	<input checked="" type="checkbox"/> PUSH	

Application	Outdoor lamps
Packaging	2 Box 1.18 m x 0.35 m x 0.37 m Gross weight 29.6 Net weight 25.6 Vol. 0.1846

### Lighting effect



### Photometric Data



Efficiency	94.86 lm/W
Coordinate System	CG
Total Flux	664.03 lm
Maximum Value	85.44 cd

### Other Applications

