

outdoor

# Talo outdoor

## Rectangular dining table / mesa rectangular

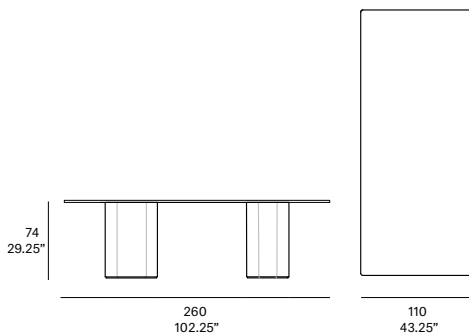
Altherr Désile Park, 2022

C700 260



Dining table with UHPC concrete base made up of natural mineral components and organic fibers (non-metallic), which ensure exceptional resistance to weathering. Tabletop options: HPL Trespa® 13 mm/0.51" thick, FENIX NTM® 12 mm/0.47" thick and Dekton® 12 mm/0.47" thick. Delivered unassembled.

Mesa de comedor con estructura de hormigón UHPC compuesto por una mezcla de componentes minerales naturales y fibras orgánicas (no metálicas) que aseguran una excepcional resistencia a la intemperie. Opciones de tablero: HPL Trespa® de 13 mm, FENIX NTM® de 12 mm y Dekton® de 12 mm. Se sirven desmontadas.



### Shipment details

Qty 1 dining table (2 boxes)  
Volume 0,84 m<sup>3</sup> / 29.7 ft<sup>3</sup>

#### HPL / FENIX NTM® Top option

Gross weight 268 kg / 591 lb  
Net weight 188 kg / 414.5 lb

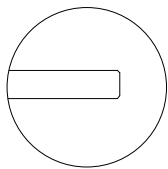
#### Dekton® Top option

Gross weight 318 kg / 701 lb  
Net weight 238 kg / 524.5 lb

Item dimensions  
(width x depth x height)

260 x 110 x 75 cm  
102.25" x 43.25" x 29.5"

Tabletop options:



- HPL Trespa® 13 mm/0.51" thick .
- FENIX NTM® 12 mm/0.47" thick .
- Dekton® 12 mm/0.47" thick .

### HEAVY FURNITURE

expormim

Expormim S.A.  
Pol. Ind. Jaime I  
46640 Moixent (Valencia) Spain  
+34 962 295 144/5  
export@expormim.com  
www.expormim.com

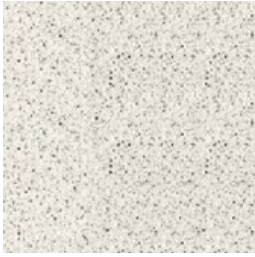
Expormim USA LLC  
(212) 204-8572  
usa@expormim.com  
www.expormim.com

1/4

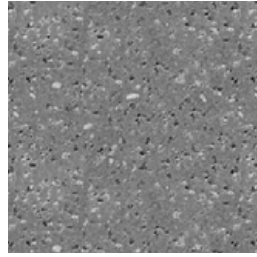
outdoor

frame / estructura

UHPC concrete



C1 stone



C2 slate



C3 terracotta

outdoor

top / tapa

HPL Trespa® - premium



320 silver quartzite - matt



323 natural chalkstone - matt

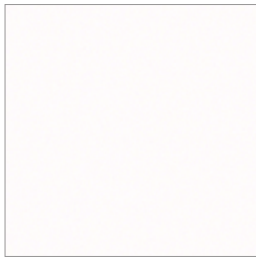


327 titanium bronze - satin



321 italian slate - matt

FENIX NTM®



029 bianco male



720 nero ingo

Dekton® - kraftizen



K1 albarium



K2 argentium



K3 umber

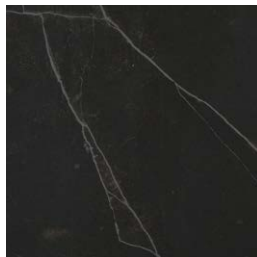


K4 micron

Dekton® - natural



D3 danae



D2 kelya

**expormim**

Expormim S.A.  
Pol. Ind. Jaime I  
46640 Moixent (Valencia) Spain  
+34 962 295 144/5  
export@expormim.com  
www.expormim.com

Expormim USA LLC  
(212) 204-8572  
usa@expormim.com  
www.expormim.com

3/4

# Maintenance and general use. Outdoor

## UHPC concrete

---



**Important: read carefully and keep for future enquiries**

**Advisory:** Expormim S.A. will not assume any responsibility for damages due to normal wear or improper use of the product.

**Due to the handmade nature of this material large slub yarns may run sporadically throughout the surface. These slubs are not to be interpreted as imperfections, but as part of the natural character of the material.**

**Importante: lea atentamente y conserve este documento para futuras consultas**

**Advertencia:** Expormim S.A. no se hará responsable de los daños que se produzcan como resultado del desgaste habitual o del uso inadecuado del producto.

**Debido a la naturaleza artesanal de este material, esporádicamente pueden aparecer grandes flameados por la superficie. Estos flameados no deben interpretarse como imperfecciones, sino como parte del carácter natural del material.**



Talo collection details