

outdoor

Lapala

Hand-woven chair / silla tejida

Lievore Altherr Molina 2015

C597 T



Chair made of stainless steel tube. Hand-woven seat and backrest with high resistance rope 7 mm/0.27" thick. Legs made of lacquered stainless steel tube. Stackable.

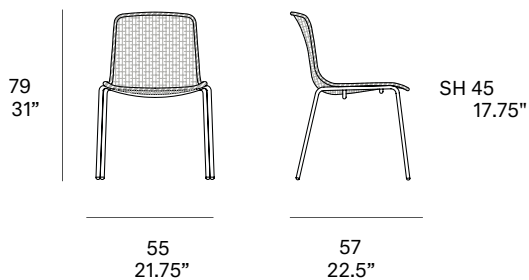
Silla fabricada en tubo de acero inoxidable. Asiento y respaldo tejidos a mano artesanalmente con cuerda de alta resistencia de 7 mm de sección. Patas fabricadas en tubo de acero inoxidable lacado. Apilable.

Shipment details

Qty	2 chairs (1 box)
Volume	0,37 m ³ / 13 ft ³
Gross weight	20 kg / 44 lb
Net weight (x1)	8 kg / 18 lb
Item dimensions (width x depth x height)	55 x 57 x 79 cm 21.75" x 22.5" x 31"

Certifications

UNE EN 581-1:2006
UNE EN 581-2:2016
UNE EN 1022:2005



frame / estructura

metallic finishes / metales



100 white



102 FT light grey
fine textured



111 FT graphite
fine textured



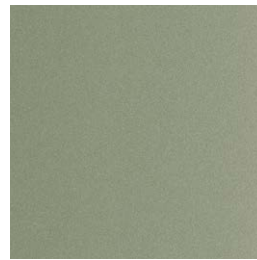
108 FT oxide
fine textured



109 FT champagne
fine textured



110 FT bronze
fine textured



113 FT sage
fine textured

outdoor

rope / cuerda

polyester rope - 7 mm / 0.27" thick



409 taupe



410 SPK orange



411 SPK dark orange



413 SPK oxide



401 black

polypropylene rope - 7 mm / 0.27" thick



420 SPK sand



422 SPK concrete



424 SPK ivy



426 SPK turquoise



427 forest green