

indoor

# Altet

## Upholstered dining armchair / sillón comedor tapizado

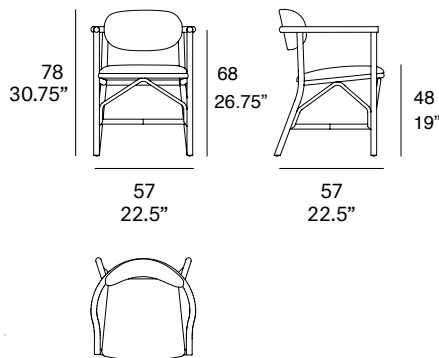
Studio expormim, 1968/2012

T111 C



Dining armchair with structure made of peeled and tinted natural rattan of 1.18" diameter. Finished with a three step water-based coating (dye, base coat and top coat) highly resistant to solar radiation thanks to UV filters. Upholstered seat and backrest. Possibility of customization through a wide variety of high performance technical fabrics. Protective caps.

Sillón de comedor con estructura en rattan natural pelado y tintado de 30 mm de calibre. Acabado con recubrimiento en tres fases (tinte, fondo y acabado) con filtros UV que lo hacen altamente resistente a la radiación solar. Los acabados utilizados son en base al agua. Asiento y respaldo tapizados. Posibilidad de personalización mediante una amplia variedad de tejidos técnicos de altas prestaciones de uso. Tacos protectores.



### Shipment details

Qty	1 dining armchair (1 box)
Volume	0,29 m <sup>3</sup> / 10 ft <sup>3</sup>
Gross weight	11 kg / 24.5 lb
Net weight	7 kg / 15.5 lb
Box dimensions (approx.)	58 x 59 x 80 cm 22.75" x 23.25" x 31.5"
Item dimensions (width x depth x height)	57 x 57 x 78 cm 22.5" x 22.5" x 30.75"
COM (1, 40 - 1,50 m / 54"-59")	cushion: 1 m / 1.1 yd

### Certifications

EN 1728:2013  
EN 16139:2013 (level: L1)  
EN 1022:2005

**expormim**

Expormim S.A.  
Pol. Ind. Jaime I  
46640 Moixent (Valencia) Spain  
+34 962 295 144/5  
export@expormim.com  
www.expormim.com

Expormim USA LLC  
(212) 204-8572  
usa@expormim.com  
www.expormim.com

1/7

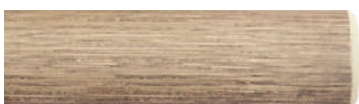
**Rattan**

**Natural\_matt**



R10 natural

**Tinted\_matt**



R30 oak



R03 noce



R05 grigio



R23 french grey



R06 verde oliva



R08 azzurro



R09 nero

**Tinted\_gloss**



R31 cognac



R32 antique brown



R33 alpine green

**Lacquered\_matt**



R02 bianco



R22 clay



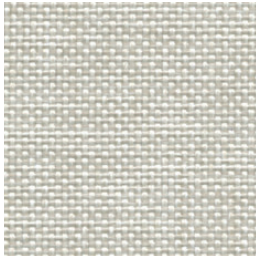
R14 japanese red



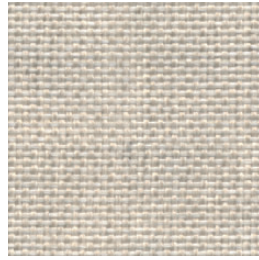
indoor

Cushions / confección

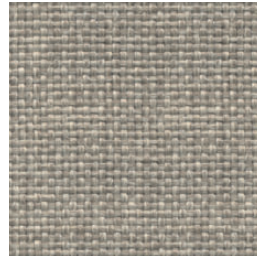
group 31 - dolce Crevin®



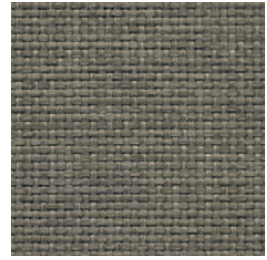
dolce 07



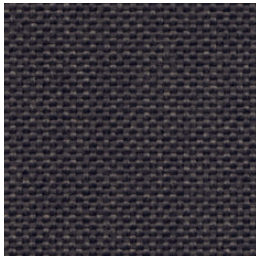
dolce 04



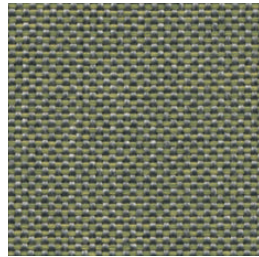
dolce 11



dolce 12



dolce 53

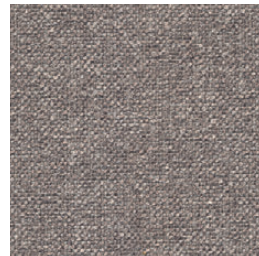


dolce 30

group 31 - ito Crevin®



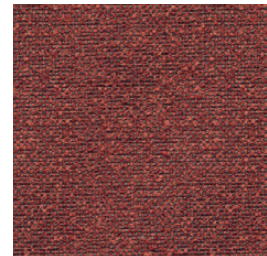
ito 05



ito 18



ito 12



ito 21



ito 20



ito 38



ito 45

indoor

Cushions / confección

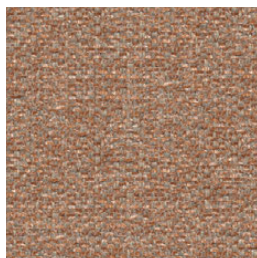
group 31 - salvia Crevin®



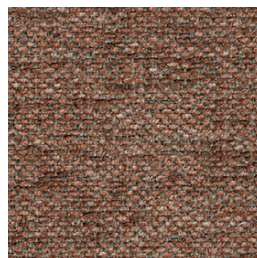
salvia 02



salvia 20



salvia 29



salvia 21



salvia 38

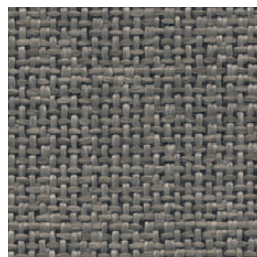
group 31 - sacco Crevin®



sacco 02



sacco 05



sacco 11

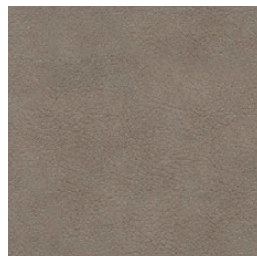
group 31 - valencia™ C5 heritage faux leather



valencia heritage 9050



valencia heritage 9051



valencia heritage 9052



valencia heritage 9055

indoor

Cushions / confección

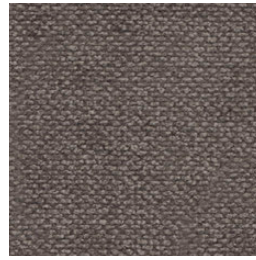
group 32 - velvety Crevin®



velvety 10



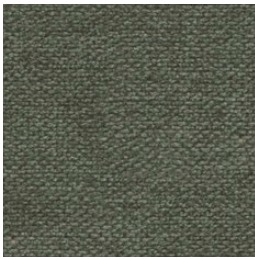
velvety 17



velvety 12



velvety 26



velvety 32

group 32 - indianskop Limonta



indianskop 15



indianskop 02



indianskop 04



indianskop 31



indianskop 46

**expormim**

Expormim S.A.  
Pol. Ind. Jaime I  
46640 Moixent (Valencia) Spain  
+34 962 295 144/5  
export@expormim.com  
www.expormim.com

Expormim USA LLC  
(212) 204-8572  
usa@expormim.com  
www.expormim.com

5/7

indoor

Cushions / confección

group 32 - clusone Limonta



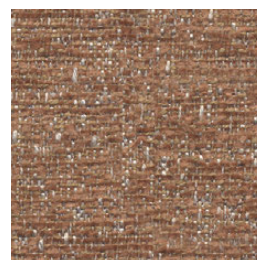
clusone 04



clusone 06



clusone 05



clusone 10

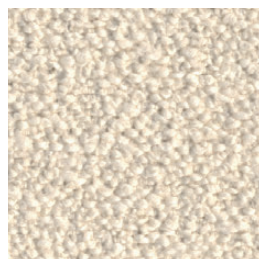


clusone 16

group 32 - ascendent reloaded Carlucci®



ascendent reloaded 094



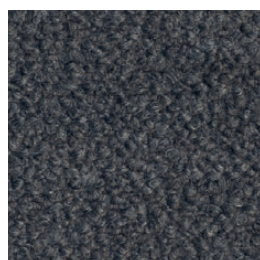
ascendent reloaded 070



ascendent reloaded 071



ascendent reloaded 030



ascendent reloaded 093



ascendent reloaded 022

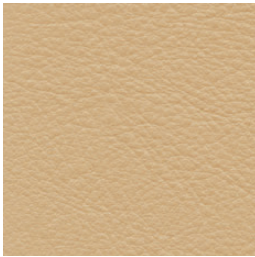


ascendent reloaded 040

indoor

Cushions / confección

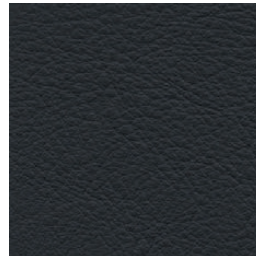
group 33 - elmosoft Elmo® leather



elmosoft 22024



elmosoft 33004



elmosoft 99999