

Faz table stainless 200x100x72

by Ramón Esteve

Vondom's Faz collection, designed by Ramón Esteve, is one of the firm's most iconic collections. It stands out for its modular design and sophistication, representing harmony, serenity and timelessness through mineral and emphatic shapes. Faz transforms environments with its unique combination of material and light, creating an enveloping and exclusive atmosphere.

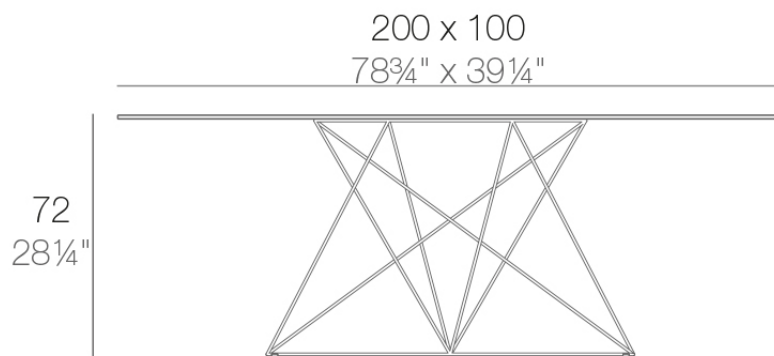


Info

Description

Stainless steel legs with lacquer in a colour to match the tabletop. Tabletop is available in HPL or Full White (white only).

Weight: 49.08 Kg



FAZ Mesa Inox 200 x 100
FAZ Dinning Table Stainless Base 78³/₄"x39¹/₄"

Finishes

finishes

BASIC

Ref. 54053B



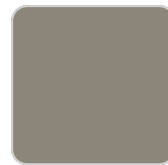
white



smoked



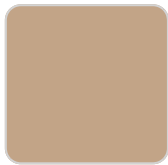
ecru



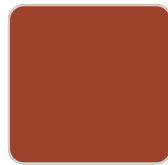
tortora



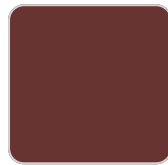
cream



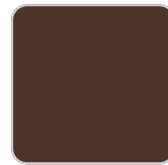
camel 2020



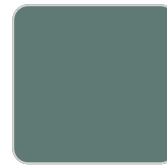
clay 2022



garnet



brown



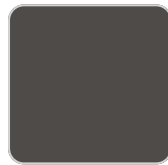
green



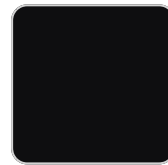
blue



gray



anthracite



black



ecru granite



cream granite

Matt Polyethylene

Ambients

