

outdoor

Bare

Round coffee table / centro redondo

studio expormim 2018

C116



Structure made of oval stainless steel tube, finished with polyester powder. Tabletop options: HPL Trespa® 8 mm/0.31" thick and Dekton® 8 mm/0.31" thick.

Estructura fabricada en tubo oval de acero inoxidable, acabado en pintura de polvo de poliéster. Opciones de tablero: HPL Trespa® de 8 mm y Dekton® de 8 mm.

Shipment details

Qty 1 coffee table (1 box)
Volume 0,44 m3 / 15.5 ft3

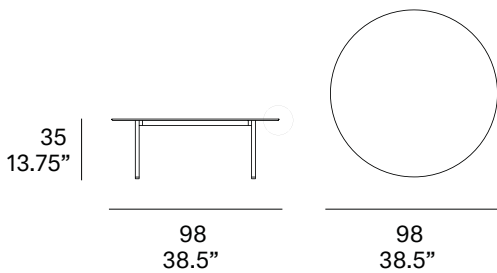
HPL Top option

Gross weight 22 kg / 49 lb
Net weight 14 kg / 31 lb

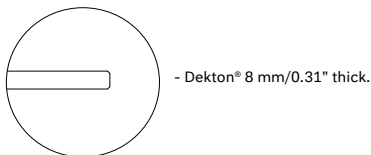
Dekton Top option

Gross weight 29 kg / 64 lb
Net weight 14 kg / 46 lb

Item dimensions 98 x 98 x 35 cm
(width x depth x height) 38.5" x 38.5" x 13.75"



Tabletop options:



outdoor

frame / estructura

metallic finishes / metales



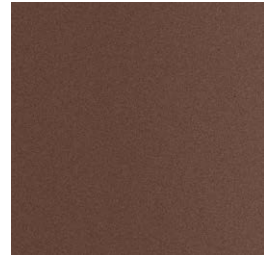
100 white



102 FT light grey
fine textured



111 FT graphite
fine textured



108 FT oxide
fine textured



109 FT champagne
fine textured



110 FT bronze
fine textured

outdoor

top / tapa

HPL Trespa® - premium



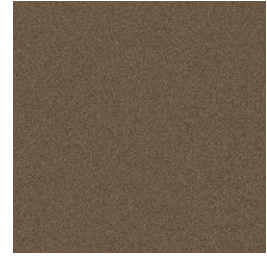
320 silver quartzite - matt



321 italian slate - matt

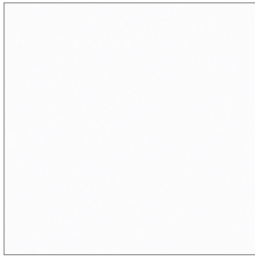


327 titanium bronze - satin



328 urban brown - satin

HPL Trespa® - basic



300 white



301 black

Dekton®



D3 danae



D4 keon



D2 kelya