

Grand Bitta,
3 Seater sofa
by Rodolfo Dordoni

kettal

3 Seater sofa

Designer
Rodolfo Dordoni

Collection
Grand Bitta

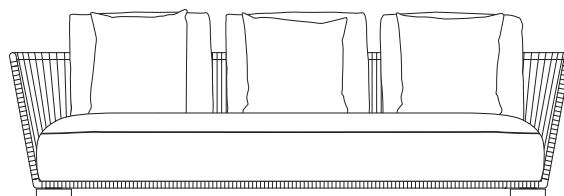
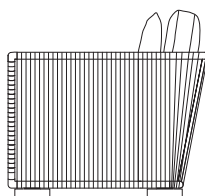
Reference
KS7003200

1/4

Grand Bitta is characterized by a combination of aluminum and teak legs, seats of braided polyester and comfortable cushions, with teak or stone table tops - all while using all waterproof materials.

cm/inch

63/24,8
26/10,2
6/2,3



cm/inch

89/35,03

150/98,4



kettal

3 Seater sofa

Designer
Rodolfo Dordoni

Collection
Grand Bitta

Reference
KS7003200

2/4

Materials

Aluminium

Antioxy, Heavy Load, Resistant
En-1421, Kettalize-It, Anti-
Scratch, Easy Clean, Flame
Retardant M1, Eco Friendly
Ecoembes Recycling Process

Rope

Antioxy, Resist UV, En-581-4, Easy
Clean

Wood (Teak / Iroko)

Terrain Elements

100% Fire Retardant Dyed
Acrylic, IMO FTP Code 2010
Part 8, Abrasion resistance
(Martindale) 60.000 cycles,
Fluorocarbon-free water
repellent finish Mildew, chlorine
and seawater resistant

Tonale Lino

100% Solution Dyed Acrylic, Fire
retardant IMO FTP Code 2010
Part 8

Tonale Boucle

60% Solution Dyed Acrylic 40%
polyester Fire retardant IMO FTP
Code 2010 Part 8

Piping

Legs Colour Options



Teak



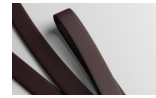
Iroko

Wood

Piping Colour



Rosmary
MR1



Whole Clove
MR2



Mustard Grain
MR3



Sea Salt
MR4



Ground Pepper
MR5



Black Salt
MR6



Poppy Seed
MR7



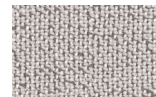
Rose Harissa
MR8

Piping

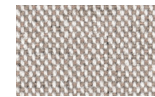
Seat/Back Cushion



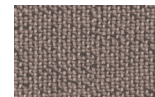
Alba
51L-51T



Mist
52L-52T



Mud Rain
53L-53T



Haboob
54L-54T



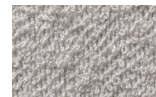
Sunstruck
55L-55T

Tonale Lino

Seat/Back Cushion



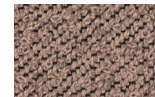
Alba
71L-71T



Mist
77L-77T



Haboob
72L-72T

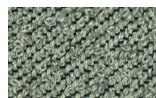


Afterglow
73L-73T



Sunstruck
74L-74T

Tonale Boucle



Aurora
75L-75T



Storm
76L-76T

3 Seater sofa

Designer
Rodolfo Dordoni

Collection
Grand Bitta

Reference
KS7003200

3/4

Maintenance

Clean with mild soap using sponge or cloth. Be gentle while cleaning, do not scrub aggressively the fabric. Once cleaned please make sure you remove soap excess.

In case of aggressive stains clean with diluted household bleach.

Clean stains promptly. The longer it remains, more difficult will be to remove.

Once cleaned the fabric steam iron the fabric. Just use steam, be carefull NOT placing the iron directly in the fabric it will get damage.

Seat/Back Cushion

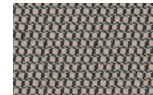
Terrain Laminate Elements



Charcoal
01L



Cumulus
02L



Fog
09L



Porous Grey
08L



Snowcap
03L



Moonstone
07L



Karakum
06L



Cambium
12L



Raku
11L



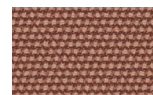
Clove
13L



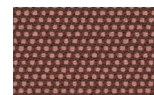
Desert Rose
14L



Pink Salt
15L



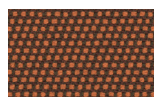
Pacific Dawn
16L



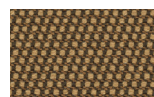
Acer
17L



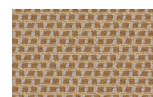
Firetail
18L



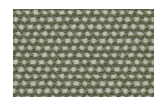
Glowing Ember
19L



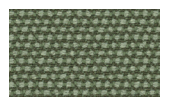
Tiger Eye
05L



Goldrush
04L



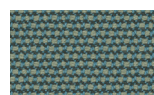
Sea Heart
22L



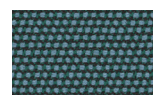
Heath
21L



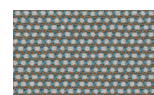
Peppercorn
20L



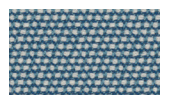
Rock Pool
23L



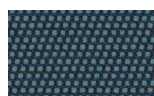
Tropic
24L



Skylark
25L



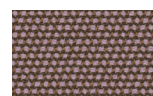
Nautica
26L



Blue Reef
27L



Cosmos
28L



Amethyst
29L

3 Seater sofa

Designer
Rodolfo Dordoni

Collection
Grand Bitta

Reference
KS7003200

4/4

Rope Colour Options

Bela Rope



Basalt
Z01



Shore Line
Z02



Nimbus
Z03



Polar White
Z04



Dry Vine
Z05



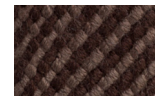
Reed
Z06



Dusk
Z07



Riverbed
Z08



Terra Firma
Z09



Chesnut
Z10



Black Cacao
Z14



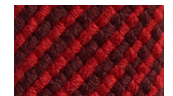
Gypsum
Z11



Dragon Tree
Z12



Sumac
Z13



Madder Root
Z15



Red Mud
Z16



Tumeric
Z19



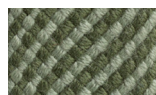
Champa
Z20



Charoli
Z18



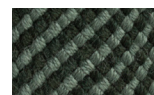
Tamarind
Z17



Bitter Gourd
Z21



Foliar
Z22



Evergreen
Z23



Sea Grass
Z25



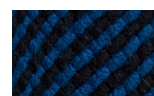
Teal
Z24



Azur
Z28



Blue Slate
Z29



Midnight
Z30



Lavandin
Z27



Tree Top
Z26