

CONTEMPORARY COLLECTIONS

Evolution^{4.1}

ALEXANDRA

Evolution^{4.1}

ALEXANDRA₃

Tras más de 25 años en continua evolución dejamos atrás nuestra antigua marca COLECCIÓN ALEXANDRA para dar la bienvenida a **ALEXANDRA**, de estética elegante y sofisticada.

Cada una de las piezas presentadas en este catálogo mantiene intactos los valores intrínsecos de nuestra marca: tradición artesanal en los procesos de fabricación, gusto por el detalle, alta calidad y nobleza de los materiales empleados. Cada una de nuestras piezas se convierte en un lienzo en blanco para que el cliente pueda dar rienda suelta a su imaginación y plasmar su toque personal a través de las múltiples opciones de acabados, tapizados o pieles.

We are personally committed to continue evolving as a company, after more than 25 years we are leaving behind our old brand COLECCION ALEXANDRA to welcome **ALEXANDRA**, with its elegant and sophisticated appeal.

Each of the pieces presented in this book upholds the intrinsic values of our brand: traditional craftsmanship in the manufacturing processes, taste for detail and high quality and excellence of the materials used. Each of our pieces is a blank canvas on which the customer can give free rein to his imagination and capture his personal touch with a wide choice of finishes, upholstery or leathers.





06 LIVING

ATLANTA / TEMPUS / FALCON / COMPASS / ABANO / BLOOMS / DUNE / EOS / BOSTON PURE / TRAVELER / FLUTE / MASTER / GIO / CULT / SEVEN / DENVER / BELLAGIO / TUPÉ / DETROIT / BOWIE / SPOCK / ANNETTE / COSMOPOL / PAUL / TUBULAR / ÁLVARO / MIAMI / YAIZA / IRIS / RINGO / DURBAN / CARONTE / POITIERS / ECLIPSE / NIDO / AXEL

128 DINING

MASTER / CARLA / MYKONOS / TANGO / GEORGE / CHELSEA / LYON / ORLEANS / REGENTA / AMIRA / LUNA / LAUREN / VALENTINA / MARCO

164 BEDROOM

REBECCA / TRAVELER / COMPASS / MASTER / ORIENT / MERCURY / GRACE / NIMES / TROYANO / VALENTINA / LAUREN

236 MAPA DE PRODUCTO. INFORMACIÓN TÉCNICA

PRODUCT MAP. TECHNICAL INFO



LIV

CONTEMPORARY COLLECTIONS

LIVING



En este ambiente:

E-4105/01*. Sofá ATLANTA. 341 x 106 x 75H | **A-3455/01**. Mesa centro TEMPUS. 135 x 135 x 40H | **S-1075/03**. Sillón FALCON. 77 x 92 x 94H | **A-2960/01**. Mesita auxiliar KENTIA. 85 x 55 x 44H

In this setting:

E-4105/01*. ATLANTA sofa. 341 x 106 x 75H | **A-3455/01**. TEMPUS coffee table. 135 x 135 x 40H | **S-1075/03**. FALCON armchair. 77 x 92 x 94H | **A-2960/01**. KENTIA side table. 85 x 55 x 44H

[Atlanta]

By Jacobo Ventura





by **Jacobo Ventura**

[Atlanta]

E-4105/01

Sofá 3 plazas ATLANTA (Con 3 mecanismos relax independientes)
ATLANTA 3-seater sofa (With 3 separate recliner motion devices)
341 x 106/163 x 75/98H



E-4110/01

Sofá 1 plaza ATLANTA (Con mecanismo relax)
ATLANTA 1-seater sofa (With recliner motion device)
123 x 106/163 x 75/98H



by Jacobo Ventura

[Tempus]



A-3455/01 | Mesa centro TEMPUS | TEMPUS coffee table | 135 x 135 x 40H



by Jacobo Ventura

[Falcon]





by **Jacobo Ventura**

[Compass]

[Compass]

By Jacobo Ventura

R-0775/01

Consola COMPASS
COMPASS console
160 x 55 x 55H
(como foto / as picture)

R-0777/01

Consola COMPASS
COMPASS console
260 x 55 x 55H

R-0725/01

Pedestal COMPASS
COMPASS pedestal
53 x 35 x 100H

R-0746/01

Mesa centro COMPASS
COMPASS coffee table
130 x 90 x 40H
(como foto / as picture)

R-0745/01

Mesa centro COMPASS
COMPASS coffee table
180 x 120 x 40H

R-0779/01

Mesa centro COMPASS
COMPASS coffee table
90 x 90 x 40H

R-0780/01

Estantería COMPASS
COMPASS bookcase
80 x 40 x 130H

R-0778/01

Mueble aux. COMPASS
COMPASS side cabinet
120 x 45 x 49H

R-0786/01

Mueble TV COMPASS
COMPASS TV cabinet
200 x 45 x 49H



by Soraya Pla

[Abano]
[Blooms]
[Duno]

En este ambiente:

A-4405/01. Sofá ABANO. 290 x 96 x 80H | **S-1070/02.** Sillón BLOOMS.
90 x 80 x 72H | **A-2990/01.** Mesa centro EOS. 130D x 39,5H

In this setting:

A-4405/01. ABANO sofa. 290 x 96 x 80H | **S-1070/02.** BLOOMS armchair.
90 x 80 x 72H | **A-2990/01.** EOS coffee table. 130D x 39,5H





by Soraya Pla

[Abano]



by Soraya Pla

[Blooms]





by Soraya Pla

[Duno]

A-4400/01 | Chaise longue DUNO | DUNO chaise longue | 185 x 83 x 72H





by Santiago Sevillano

[Eos]



A-2985/01 | Mesa centro EOS | EOS coffee table | 111 x 111 x 39,5H

A-2990/01 | Mesa centro EOS | EOS coffee table | 130D x 39,5H

En este ambiente:

E-4636/01 Sofá modular BOSTON PURE (Con mecanismo relax). 455 x 102/136 x 78H | **A-4636/01** Sofá modular BOSTON PURE. 455 x 102 x 78H | **R-0706/L25** Mesa centro TRAVELER XL. 142 x 95 x 42H | **A-5020/06** Sillón FLUTE. 120 x 75 x 83H | **A-4635/01** Puff doble BOSTON PURE. 264 x 102 x 42H | **R-0704/PP25** Mueble cocktail bar TRAVELER. 70 x 57 x 147H. *Cajines no incluidos.*

In this setting:

E-4636/01 BOSTON PURE modular sofa (With recliner motion device). 455 x 102/136 x 78H | **A-4636/01** BOSTON PURE modular sofa. 455 x 102 x 78H | **R-0706/L25** TRAVELER XL coffee table. 142 x 95 x 42H | **A-5020/06** FLUTE armchair. 120 x 75 x 83H | **A-4635/01** BOSTON PURE double pouff. 264 x 102 x 42H | **R-0704/PP25** TRAVELER cocktail bar cabinet. 70 x 54 x 147H. *Cushions not included.*





A-4635/02* | Puff doble BOSTON PURE | BOSTON PURE double pouff | 264 x 102 x 42H

(*) Cojines no incluidos / Cushions not included



by Jacobo Ventura

[Boston Pure]



J-4624/01
Sofá modular BOSTON PURE (Con mecanismo relax)
BOSTON PURE modular sofa (With recliner motion device)
260 x 102 x 78H

Información técnica en pag. 240 / Technical information on page 240

E-4636/02
Sofá modular BOSTON PURE (Con mecanismo relax)
BOSTON PURE modular sofa (With recliner motion device)
455 x 102/136 x 78H

A-4636/02
Sofá modular BOSTON PURE
BOSTON PURE modular sofa
455 x 102 x 78H



[Traveler]

by Jacobo Ventura





R-0704/PP07 | Mueble cocktail bar TRAVELER | TRAVELER cocktail bar cabinet | 70 x 54 x 147H



by Jacobo Ventura

[Traveler]



R-0704/PN93 | Mueble cocktail bar TRAVELER | TRAVELER cocktail bar cabinet | 70 x 54 x 147H



by Michele Mantovani

[Flute]





by Michele Mantovani

[Flute]

En este ambiente:

A-3255/08 Sofá MASTER L. 390 x 109 x 86H | **S-1955/09** Sillón CULT.
72 x 79 x 80H | **S-1035/03** Sillón GIO. 71 x 84 x 94H | **A-2810/01**
Mesa centro DENVER. 110D x 37H | **A-2850/01** Mesa centro SEVEN.
130 X 80 x 30H | **A-2860/01** Mesita auxiliar SEVEN. 45D x 50H

In this setting:

A-3255/08 MASTER L sofa. 390 x 109 x 86H | **S-1955/09** CULT
armchair. 72 x 79 x 80H | **S-1035/03** GIO armchair. 71 x 84 x 94H |
A-2810/01 DENVER coffee table. 110D x 37H | **A-2850/01** SEVEN coffee
table. 130 X 80 x 30H | **A-2860/01** SEVEN side table. 45D x 50H





by Jacobo Ventura

[Master]



A-3250/09
Sofá MASTER M
MASTER M sofa
280 x 109 x 86H
(Como foto / As picture)

A-3255/09
Sofá MASTER L
MASTER L sofa
390 x 109 x 86H



[Gio]



by Jacobo Ventura

[Cult]

[Seven]

A-2860/02

Mesita auxiliar SEVEN
SEVEN side table
45D x 50H

A-2855/02

Mesa centro SEVEN
SEVEN coffee table
110D x 30H

A-2850/01

Mesa centro SEVEN
SEVEN coffee table
130 X 80 x 30H

A-2860/01

Mesita auxiliar SEVEN
SEVEN side table
45D x 50H





A-2865/03
Velador SEVEN
SEVEN side table
60D x 57H

A-2870/01
Mesa apoyo SEVEN
SEVEN support table
55D x 59H



[Seven]



A-2825/01
Mesita auxiliar DENVER
DENVER side table
50 x 50 x 45H

A-2815/01
Mesa centro DENVER
DENVER coffee table
120 x 120 x 37H

A-2820/01
Mesa centro DENVER
DENVER coffee table
140 x 70 x 37H

A-2940/10
Mesita auxiliar DENVER
DENVER side table
55D x 57H

A-2810/01
Mesa centro DENVER
DENVER coffee table
110D x 37H

by Jacobo Ventura

[Denver]

En este ambiente:

A-4230/01 Sofá modular BELLAGIO. 505 x 325 x 70H | **A-3311/02** Mesa centro DETROIT XL. 200 x 120 x 43H | **S-1032/02** Sillón TUPÉ. 75 x 84 x 79H | **A-2830/02** Mesita auxiliar DENVER. 55D x 45H
Cajines no incluidos.

In this setting:

A-4230/01 BELLAGIO modular sofa. 505 x 325 x 70H | **A-3311/02** DETROIT XL coffee table. 200 x 120 x 43H | **S-1032/02** TUPÉ armchair. 75 x 84 x 79H | **A-2830/02** DENVER side table. 55D x 45H
Cushions not included.





[Bellagio]

by Enrique Marti

A-4220/01 | Sofá modular BELLAGIO | BELLAGIO modular sofa | 430 x 105 x 70H

Información técnica en pag. 239 / Technical information on page 239



A-4231/01
Sofá modular BELLAGIO
BELLAGIO modular sofa
240 x 105 x 70H

by Enrique Martí

[Bellagio]

Información técnica en pag. 239 / Technical information on page 239





by Jacobo Ventura

[Detroit]

A-3311/01
Mesa centro DETROIT XL
DETROIT XL coffee table
200 x 120 x 43H
(como foto / As picture)

A-3310/01
Mesa centro DETROIT
DETROIT coffee table
120 x 120 x 43H





by Jacobo Ventura

[Tupé]

En este ambiente:

A-4720/04 Sofá BOWIE L. 300 x 110 x 75H

A-2855/01 Mesa centro SEVEN. 110D X 30H

A-3400/04 Mesa centro ANNETTE. 120D x 40H

A-3410/02 Mesita auxiliar ANNETTE. 50D x 60H

S-1025/03 Sillón SPOCK. 83 x 83 x 107H

Cojines no incluidos

In this setting:

A-4720/04 BOWIE L sofa. 300 x 110 x 75H

A-2855/01 SEVEN coffee table. 110D X 30H

A-3400/04 ANNETTE coffee table. 120D x 40H

A-3410/02 ANNETTE side table. 50D x 60H

S-1025/03 SPOCK armchair. 83 x 83 x 107H

Cushions not included





by Estudi{H}Ac

[Annette]

A-3410/02
 Mesita auxiliar ANNETTE
 ANNETTE side table
 50D x 60H

A-3405/03
 Mesita auxiliar ANNETTE
 ANNETTE side table
 80D x 45H

A-3400/01
 Mesa centro ANNETTE
 ANNETTE coffee table
 120D x 40H

A-3400/03
 Mesa centro ANNETTE
 ANNETTE coffee table
 120D x 40H





by Jacobo Ventura

[Spock]



by **Jacobo Ventura**

[Bowie]

A-4720/01
Sofá BOWIE L
BOWIE L sofa
300 x 110 x 75H
(Como foto / As picture)

A-4722/01
Sofá BOWIE M
BOWIE M sofa
250 x 110 x 75H





[Bowie]

by **Jacobo Ventura**

A-4725/02*

Sofá BOWIE STRIPED L
BOWIE STRIPED L sofa
300 x 110 x 75H
(Como foto / As picture)

A-4726/04

Sofá BOWIE STRIPED M
BOWIE STRIPED M sofa
250 x 110 x 75H

A-3310/KWXX

Mesa centro DETROIT
DETROIT coffee table
120 x 120 x 43H

En este ambiente:

E-4535/01 Sofá modular COSMOPOL. 364 x 170 x 75H | **A-2635/02** Mesa centro TUBULAR. 121 x 101 x 43 | **A-5025/95** Sillón PAUL. 94 x 71 x 79H.
Cojines no incluidos.

In this setting:

E-4535/01 COSMOPOL modular sofa. 364 x 170 x 75H | **A-2635/02** TUBULAR coffee table. 121 x 101 x 43H | **A-5025/95** PAUL armchair. 94 x 71 x 79H.
Cushions not included.





by **Jacobo Ventura**

[Cosmopol]

E-4510/06
Sofá 3 plazas COSMOPOL (Con 3 mecanismos relax independientes)
COSMOPOL 3-seater sofa (With 3 separate recliner motion devices)
284 x 105 x 75H

Información técnica en pag. 241 / Technical information on page 241



A-2440/93 | Revistero COSMOPOL | COSMOPOL magazine bag | 43 x 30H





by Estudi{H}Ac

[Paul]



[Álvaro]

by Juan Robles



[Tubular]

by Jacobo Ventura

En este ambiente:

A-4710/02 Sofá MIAMI L con capitoné. 290 x 108 x 81H | **A-4712/02** Sofá MIAMI M con capitoné. 240 x 108 x 81H | **S-1025/07** Sillón SPOCK. 83 x 83 x 107H | **A-3360/01** Mesa centro YALZA. 130 x 80 x 37H | **S-1520/04** Bargeño IRIS. 128 x 51 x 171H
Cojines no incluidos.

In this setting:

A-4710/02 MIAMI L sofa with deep-buttoning. 290 x 108 x 81H | **A-4712/02** MIAMI M sofa with deep-buttoning. 240 x 108 x 81H | **S-1025/07** SPOCK armchair. 83 x 83 x 107H | **A-3360/01** YALZA coffee table. 130 x 80 x 37H | **S-1520/04** IRIS high sideboard. 128 x 51 x 171H
Cushions not included



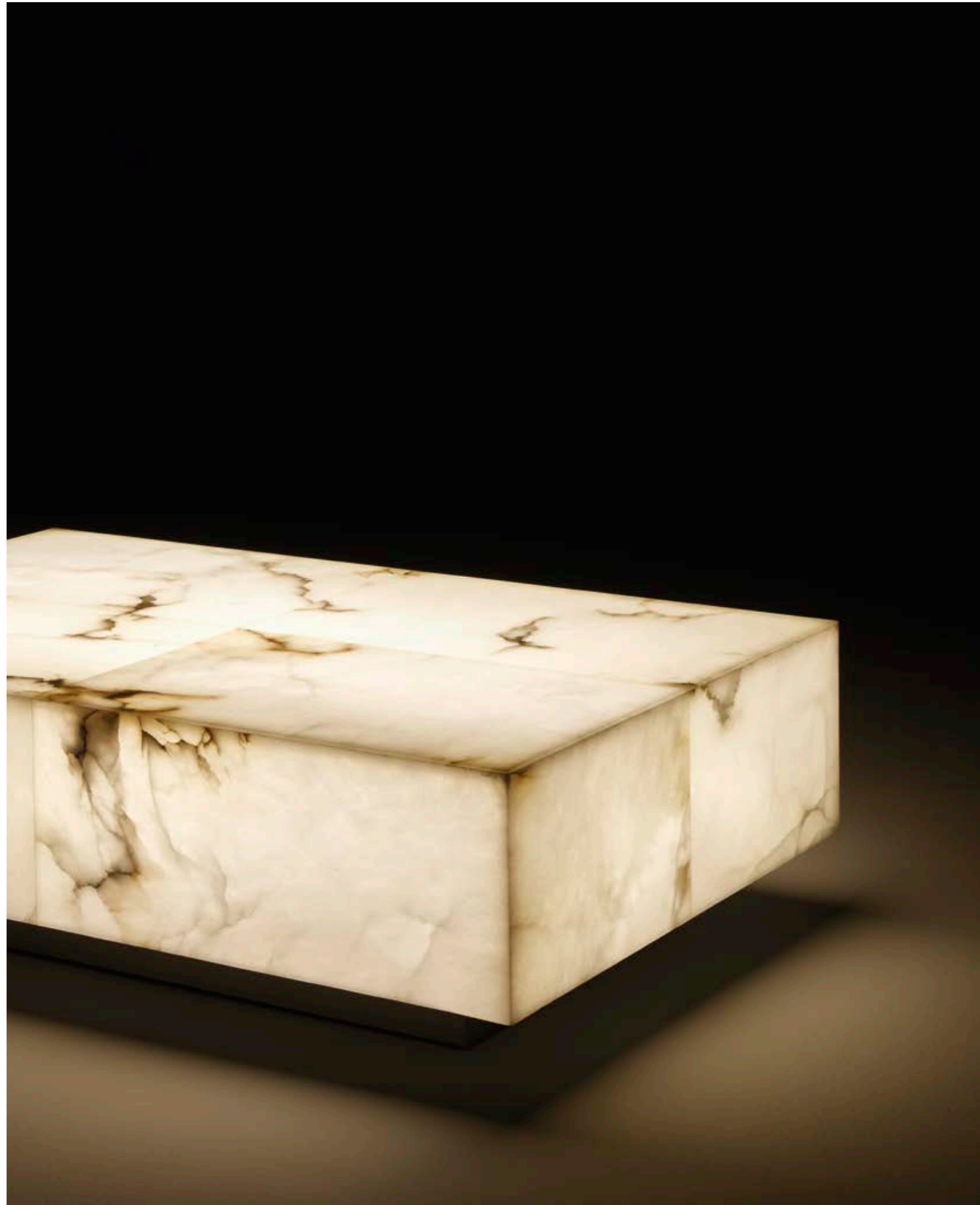


by Jacobo Ventura

[Miami]

A-4710/01
Sofá MIAMI L
MIAMI L sofa
290 x 108 x 81H
(Como foto / As picture)

A-4712/01
Sofá MIAMI M
MIAMI M sofa
240 x 108 x 81H



by **Jacobo Ventura**

[Yaiza]

A-3360/01 | Mesa centro YAIZA | YAIZA coffee table | 130 x 80 x 37H



by Jacobo Ventura

[Iris]







by Jacobo Ventura

[Ringo]

S-1802/01

Sofá RINGO módulo izq.
RINGO left unit sofa
164 x 107 x 93H

S-1800/01

Sofá RINGO módulo central
RINGO central unit sofa
158 x 107 x 93H

S-1801/01

Sofá RINGO módulo dcho.
RINGO right unit sofa
164 x 107 x 93H



S-1501/02 | Cómoda DURBAN | DURBAN sideboard | 139 x 53 x 99H S-1255 | Espejo STAR | STAR mirror | 110D



by María J. Guinot

[Caronte]

S-1055/01 | Sillón CARONTE | CARONTE armchair | 105 x 118 x 77H





[Poitiers]



by **Jacobo Ventura**
[Eclipse]



CONTEMPORARY COLLECTIONS

LUXURY HOME THEATRE SEATING

En Alexandra somos conscientes que crear un espacio de entretenimiento único en casa puede ser un desafío. Esto nos ha llevado a poner el foco en diseñar y fabricar sofás relax que aúnen estilo, comodidad y plena funcionalidad.

At Alexandra, we know that creating a unique entertainment space at home can be a challenge. We are focused on choosing home theatre sofas that exemplify both style and cosiness.

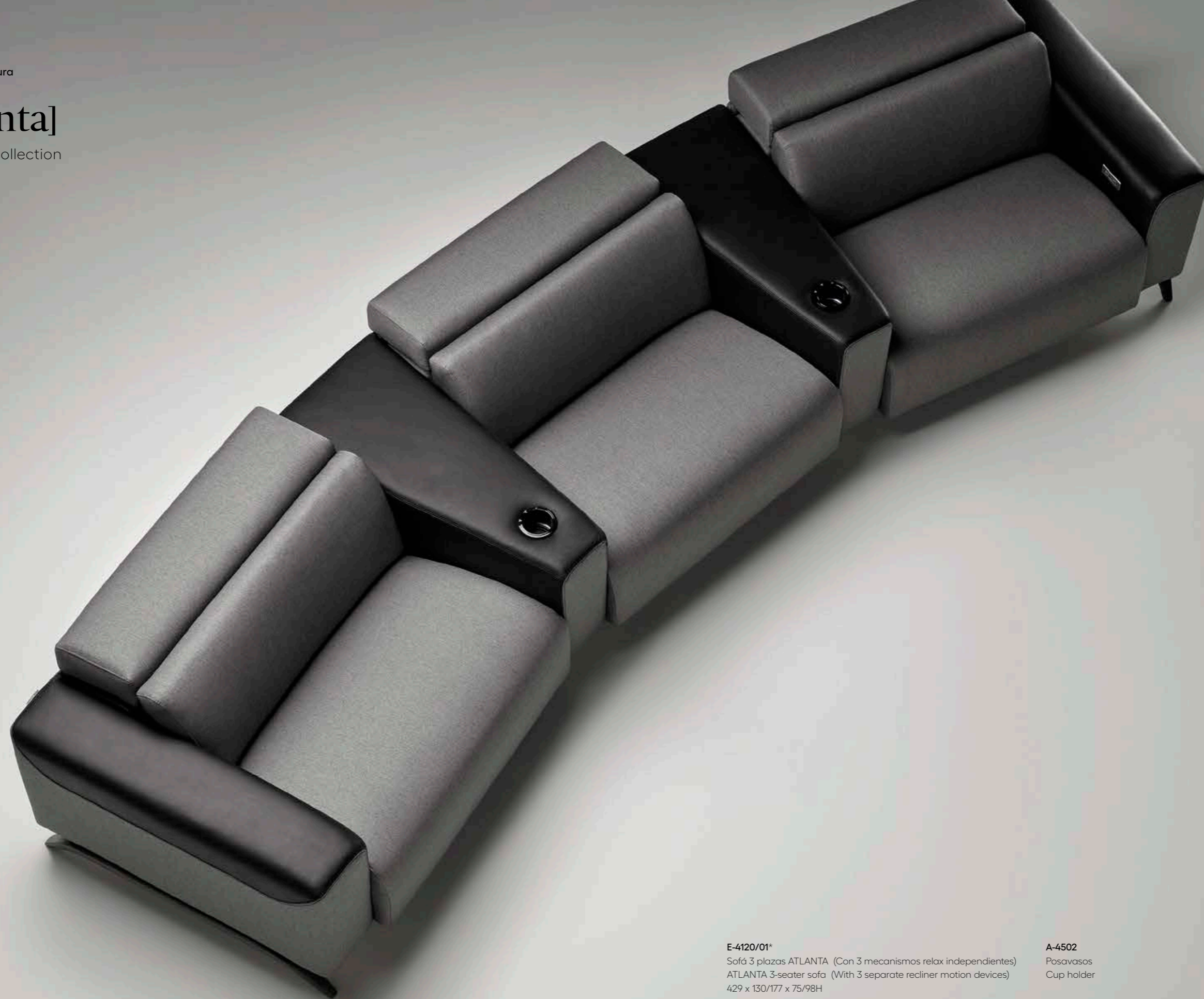
Descubra la colección completa en:
www.coleccionalexandra.com

Explore the entire collection at:
www.coleccionalexandra.com

by Jacobo Ventura

[Atlanta]

relax sofa collection



E-4120/01*

Sofá 3 plazas ATLANTA (Con 3 mecanismos relax independientes)
ATLANTA 3-seater sofa (With 3 separate recliner motion devices)
429 x 130/177 x 75/98H

A-4502

Posavasos
Cup holder

(* Posavasos no incluidos / Cup holders not included)



En este ambiente:

E-4123/01*. Sofá modular ATLANTA. 224 x 106 x 75H | **E-4122/01***. Sofá modular ATLANTA. 426 x 106 x 75H | **R-0705/D01**. Mueble TV TRAVELER. 240 x 47 x 58H | **A-2960/01**. Mesita auxiliar KENTIA. 85 x 55 x 44H

(*) Posavasos incluidos

In this setting:

E-4123/01*. ATLANTA modular sofa. 224 x 106 x 75H | **E-4122/01**. ATLANTA modular sofa. 426 x 106 x 75H | **R-0705/D01**. TRAVELER TV cabinet. 240 x 47 x 58H | **A-2960/01**. KENTIA side table. 85 x 55 x 44H

(*) Cup holders included



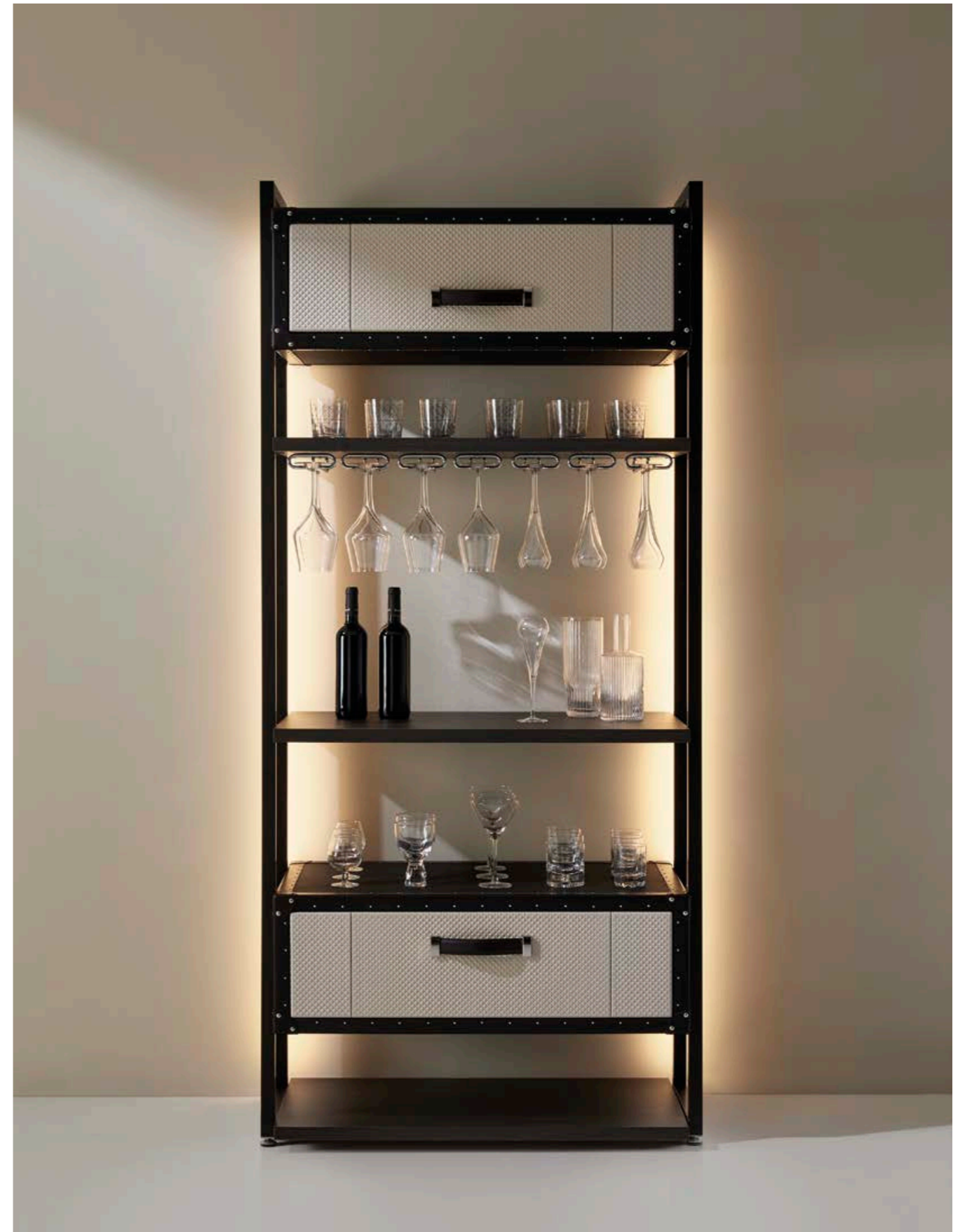
by Jacobo Ventura
[Traveler]

R-0975/D21
 Aparador TRAVELER
 TRAVELER sideboard
 240 x 55 x 76H



by Jacobo Ventura

[Traveler]



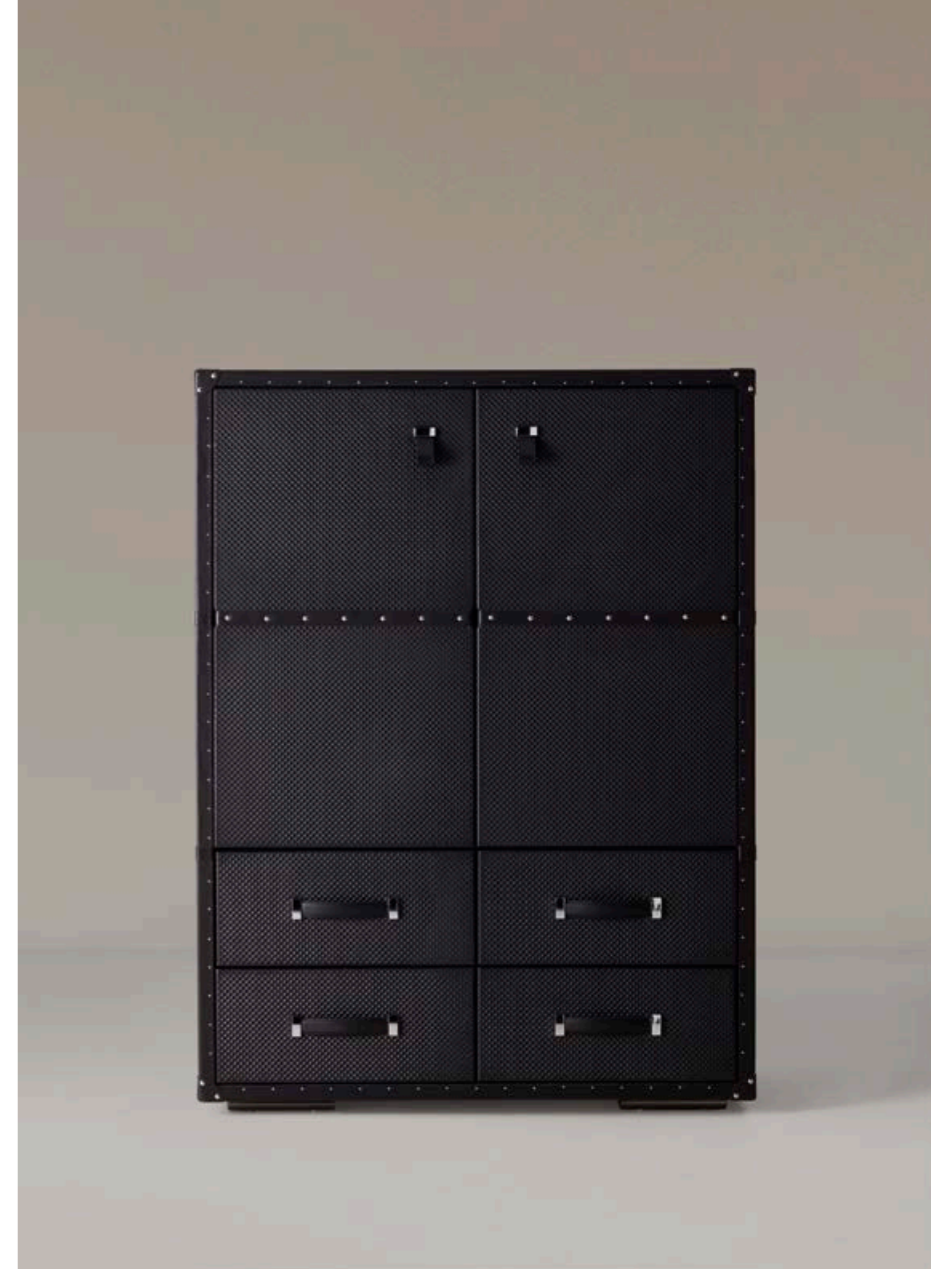


R-1020/D93 | Armario cocktail bar TRAVELER | TRAVELER cocktail bar cabinet | 115 x 50 x 155H



by Jacobo Ventura

(*) Con luz LED RGB interior / With interior RGB LED lighting.



[Traveler]



by Jacobo Ventura

[Traveler]



R-0980/D91
 Armario TRAVELER M
 TRAVELER M cabinet
 70 x 50 x 155H

R-0985/L90
 Armario TRAVELER L
 TRAVELER L cabinet
 115 x 50 x 155H



(*) Nevera y cafetera no incluidas / Mini fridge and coffee machine not included.
 Dimensiones espacio nevera / Interior space for mini fridge: 43 x 49 x 57H
 Dimensiones espacio cafetera / Interior space for coffee machine: 64 x 49 x 53H



by Jacobo Ventura

[Traveler]

R-1025/PP25
 Coffee station TRAVELER
 TRAVELER coffee station
 70 x 71 x 147H

R-1025/DN01
 Coffee station TRAVELER
 TRAVELER coffee station
 70 x 71 x 147H

G-0100
 Nevera
 Mini fridge
 38 x 38 x 47H



by Jacobo Ventura

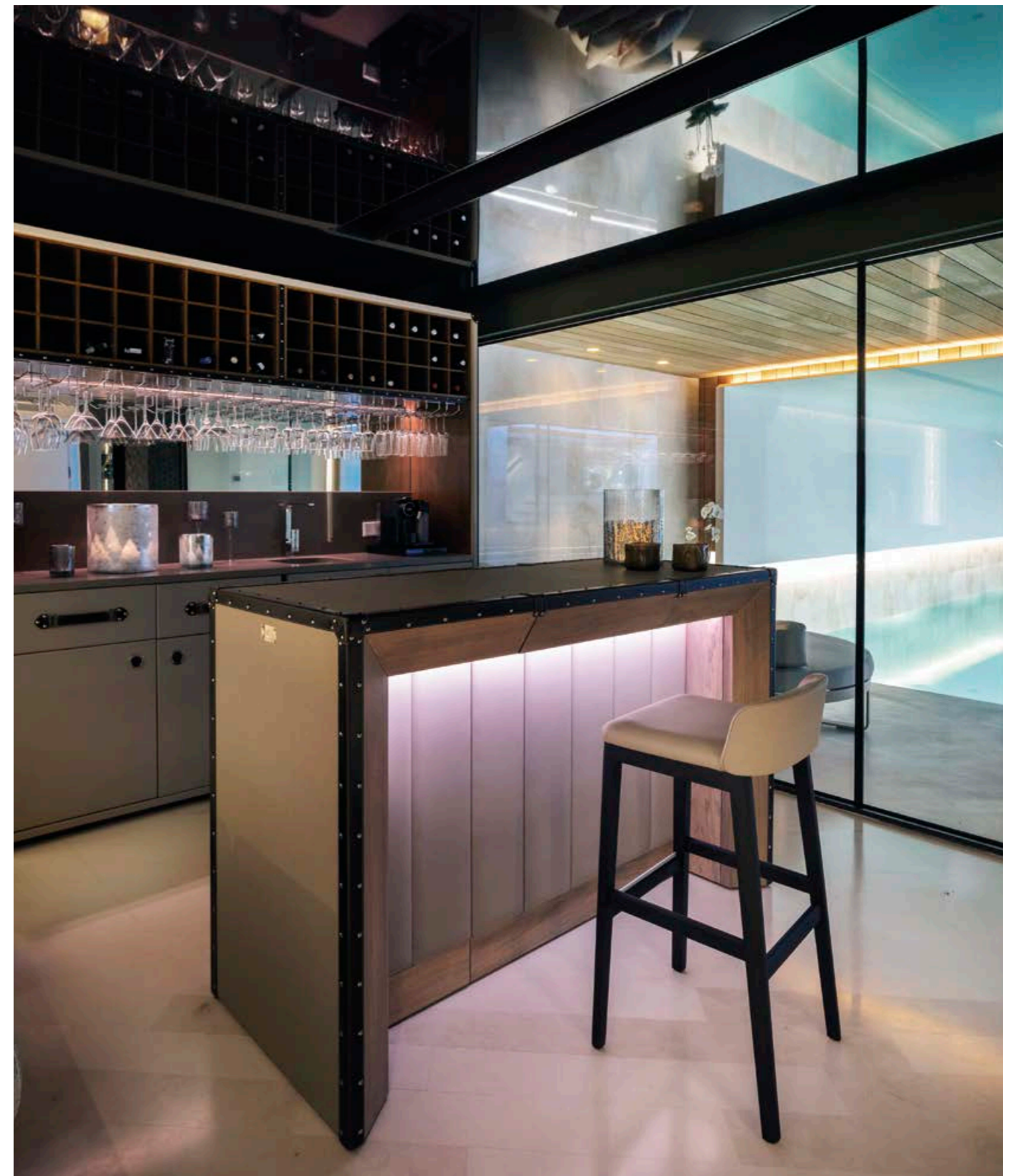
[Compass]

A-0892
COMPASS
Barra bar (módulo lateral izq.)
Bar counter (Left side unit)
55 x 66 x 110H

A-0891
COMPASS
Barra bar (módulo central)
Bar counter (Center unit)
60 x 66 x 110H

A-0890
COMPASS
Barra bar (módulo lateral dcho.)
Bar counter (Right side unit)
55 x 66 x 110H

A-0896
Iluminación LED
LED lighting
170 cm





by *Jacobo Ventura*

[Compass]

R-0865/01

Mesa billar COMPASS
COMPASS pool table
256 x 144 x 77H

R-0875/01

Mesa billar COMPASS
COMPASS pool table
232 x 132 x 77H

R-0870/01

Mesa billar COMPASS
COMPASS pool table
282 x 155 x 77H
(Como foto / As picture)



En este ambiente:

A-4507/06. Chaise longue 1 brazo COSMOPOL. 102 x 170 x 75H | **A-4513/06.** Módulo central COSMOPOL. 80 x 105 x 75H | **A-4508/06.** Chaise longue 1 brazo COSMOPOL. 102 x 170 x 75H | **E-4512/07***. Sofá 1 plaza COSMOPOL. 124 x 105 x 75H | **E-4513/07***. Módulo central COSMOPOL. 80 x 105 x 75H | **E-4528/07***. Sofá 1 plaza COSMOPOL. 102 x 105 x 75H. *Cojines no incluidos*

In this setting:

A-4507/06. COSMOPOL 1 arm chaise longue. 102 x 170 x 75H | **A-4513/06.** COSMOPOL central unit. 80 x 105 x 75H | **A-4508/06.** COSMOPOL 1 arm chaise longue. 102 x 170 x 75H | **E-4512/07***. COSMOPOL 1-seater sofa. 124 x 105 x 75H | **E-4513/07***. COSMOPOL central unit. 80 x 105 x 75H | **E-4528/07***. COSMOPOL 1-seater sofa. 102 x 105 x 75H. *Cushions not included*

by **Jacobo Ventura**

[Cosmopol]

relax sofa collection



E-4512/03

Sofá 1 plaza COSMOPOL (Con mecanismo eléctrico relax)
COSMOPOL 1-seater sofa (With relax motion device)
124 x 105 x 75H

Información técnica en pag. 241 / Technical information on page 241



by Jacobo Ventura

[Nido]



by Jacobo Ventura

[Axel]

(*) Nevera y cafetera no incluidas / Mini fridge and coffee machine not included.
 Dimensiones espacio nevera / Interior space for mini fridge: 42 x 41, 5 x 54H
 Dimensiones espacio cafetera / Interior space for coffee machine: 34 x 41, 5 x 50H

R-1015/L404*
 Coffee station AXEL
 AXEL coffee station
 73 x 67 x 148H

G-0100
 Nevera
 Mini fridge
 38 x 38 x 47H



DINING

CONTEMPORARY COLLECTIONS

DINING

En este ambiente:

A-3191/0128 Mesa comedor MASTER. 240 x 120 x 74H

A-3910/28 Silla comedor CARLA. 56 x 64 x 81H

A-3190/0128 Aparador MASTER. 180 x 48,5 x 74H

In this setting:

A-3191/0128 MASTER dining table. 240 x 120 x 74H

A-3910/28 CARLA dining chair. 56 x 64 x 81H

A-3190/0128 MASTER sideboard. 180 x 48,5 x 74H





by Jacobo Ventura

[Carla]

[Master]

By Jacobo Ventura





En este ambiente:

A-3195/01 Mesa comedor MYKONOS. 240 x 110 x 74H

A-3915/02 Silla comedor TANGO. 54,5 x 59,5 x 80H

A-4835/01 Mueble bar GEORGE. 140 x 54 x 200H

In this setting:

A-3195/01 MYKONOS dining table. 240 x 110 x 74H

A-3915/02 TANGO dining chair. 54,5 x 59,5 x 80H

A-4835/01 GEORGE bar cabinet. 140 x 54 x 200H



by **Jacobo Ventura**

[Tango]

A-3915/02
Silla comedor TANGO
TANGO dining chair
54,5 x 59,5 x 80H

A-3920/02
Silla comedor TANGO
TANGO dining chair
54,5 x 59,5 x 80H

A-3920/01
Silla comedor TANGO
TANGO dining chair
54,5 x 59,5 x 80H



by **Jacobo Ventura**

[Mykonos]



A-3195/01
Mesa comedor MYKONOS
MYKONOS dining table
240 x 110 x 74H



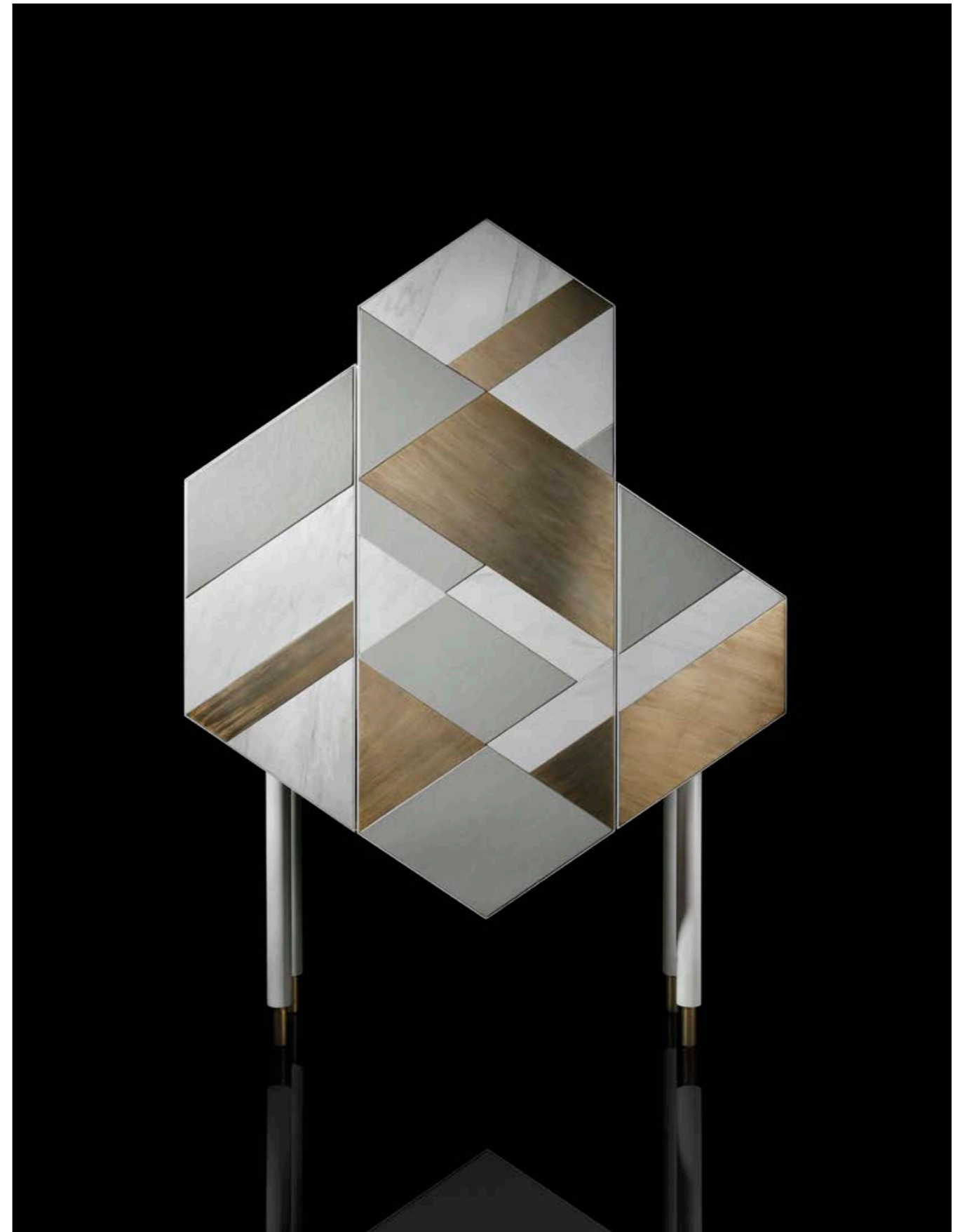
A-3195/02
Mesa comedor MYKONOS
MYKONOS dining table
240 x 110 x 74H

A-3197/02
Mesa comedor MYKONOS
MYKONOS dining table
110D x 74H



by Estudi{H}Ac

[George]

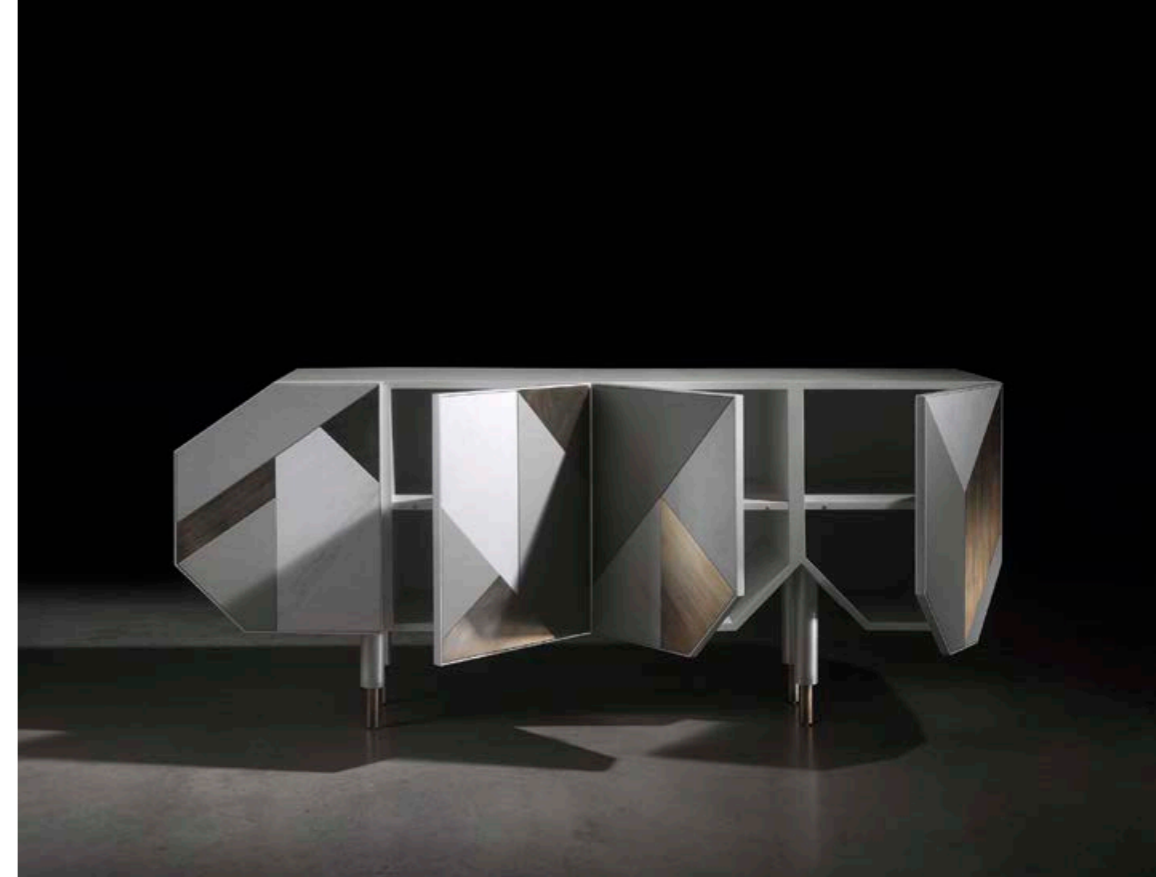


A-4835/01 | Mueble bar GEORGE | GEORGE bar cabinet | 140 x 54 x 200H



by Estudi{H}Ac

[George]



En este ambiente:

A-4785/02 Mesa comedor CHELSEA. 290 x 120 x 76H

A-4925/02 Silla comedor LYON. 55 x 63 x 104H

A-4735/02 Aparador IRIS. 193 x 49 x 90H

S-5877/01 Mueble bar REGENTA. 124 x 50 x 200H

In this setting:

A-4785/02 CHELSEA dining table. 290 x 120 x 76H

A-4925/02 LYON dining chair. 55 x 63 x 104H

A-4735/02 IRIS sideboard. 193 x 49 x 90H

S-5877/01 REGENTA bar cabinet. 124 x 50 x 200H





[Chelsea]



[Lyon]



[Orleans]

A-4905/01
Silla comedor ORLEANS
ORLEANS dining chair
61 x 60,5 x 89H

A-4905/02
Silla comedor ORLEANS
ORLEANS dining chair
61 x 60,5 x 89H

by Jacobo Ventura



[Regenta]

S-5877/01 | Mueble bar REGENTA | REGENTA bar cabinet | 124 x 50 x 200H

En este ambiente:

S-1298/02 Mesa comedor VALENTINA. 220 x 120 x 74H

A-3917/04 Silla comedor AMIRA. 55 x 59 x 75H

A-4855/01 Mueble bar LUNA. 97 x 51 x 185H

In this setting:

S-1298/02 VALENTINA dining table. 220 x 120 x 74H

A-3917/04 AMIRA dining chair. 55 x 59 x 75H

A-4855/01 LUNA bar cabinet. 97 x 51 x 185H

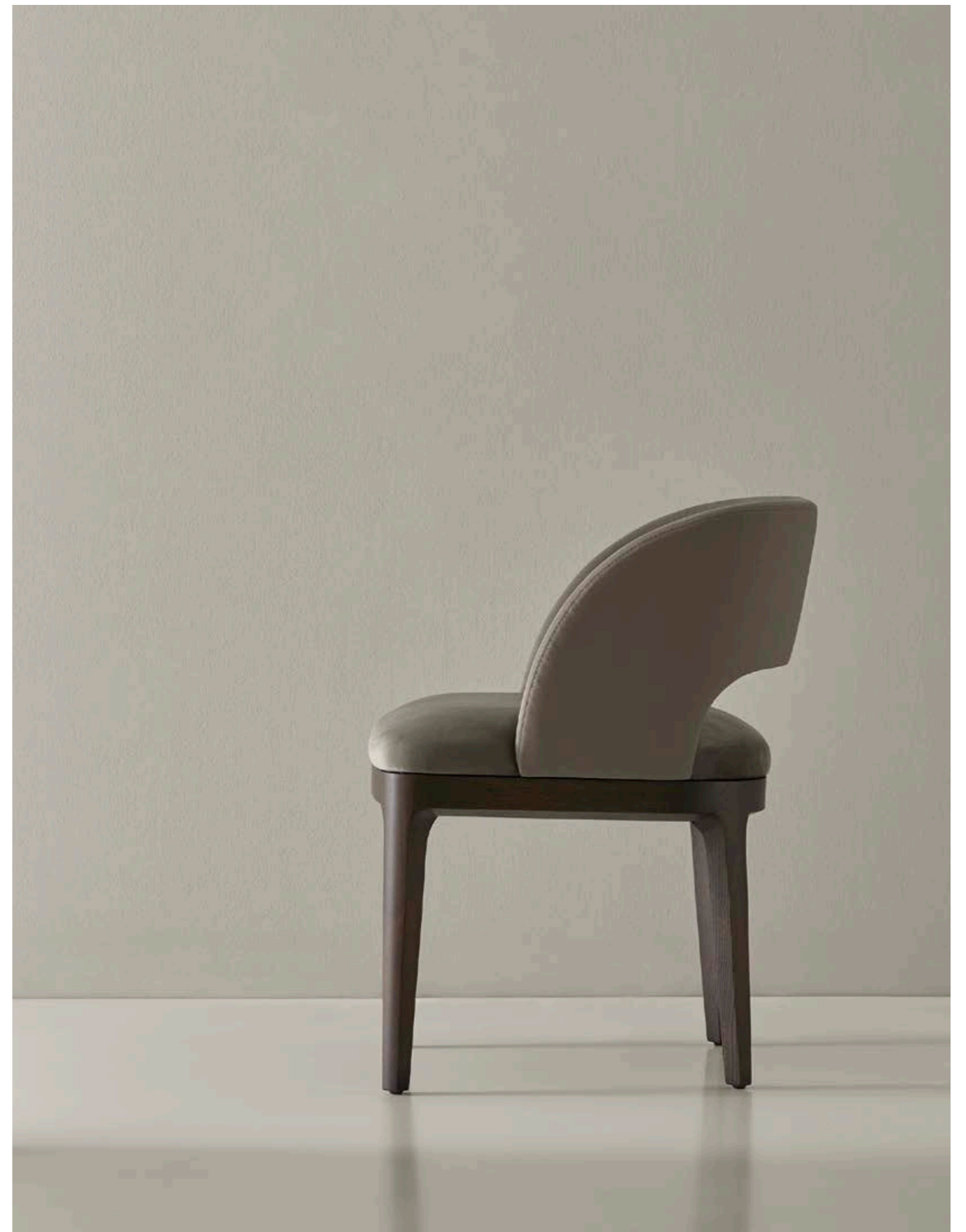




by **Jacobo Ventura**



[Amira]



A-3917/02 | Silla comedor AMIRA | AMIRA dining chair | 55 x 59 x 75H



A-4855/01* | Mueble bar LUNA | LUNA bar cabinet | 97 x 51 x 185H

A-4855/03*
Mueble bar LUNA
LUNA bar cabinet
97 x 51 x 185H



by Jose Granell

[Luna]



(*) Mueble bar con luz LED RGB interior / Bar cabinet with interior RGB LED lighting.



En este ambiente:

A-4785/03 Mesa comedor CHELSEA. 290 x 120 x 76H

S-1284/07 Silla comedor VALENTINA. 59 x 60 x 101H

A-3065/01 Aparador LAUREN. 195 x 50 x 93H

A-3000/01 Vitrina LAUREN. 100 x 48 x 210H

In this setting:

A-4785/03 CHELSEA dining table. 290 x 120 x 76H

S-1284/07 VALENTINA dining chair. 59 x 60 x 101H

A-3065/01 LAUREN sideboard. 195 x 50 x 93H

A-3000/01 LAUREN display cabinet. 100 x 48 x 210H



A-3000/OCSX* | Vitrina LAUREN | LAUREN display cabinet | 100 x 48 x 210H



by Jacobo Ventura

[Lauren]



by Jacobo Ventura

[Valentina]

S-1284/03

Silla comedor VALENTINA
VALENTINA dining chair
59 x 60 x 101H

S-1283/01

Silla comedor VALENTINA con capitoné
VALENTINA deep-buttoned dining chair
59 x 60 x 101H



by Jacobo Ventura

[Marco]



A-3905/01

Silla comedor MARCO
MARCO dining chair
52 x 59 x 84H



CONTEMPORARY COLLECTIONS

BED

ROOM



En este ambiente:

S-4805/04. Cama REBECCA. 245 x 234 x 134H | **R-0715/L93.** Mesita noche TRAVELER. 65 x 49 x 59H | **S-1475/08.** Banqueta IRIS. 122 x 43 x 42H

In this setting:

S-4805/04. REBECCA bed. 245 x 234 x 134H | **R-0715/L93.** TRAVELER night stand. 65 x 49 x 59H | **S-1475/08.** IRIS bench. 122 x 43 x 42H



by Michele Mantovani

[Rebecca]

S-4800/04
Cama REBECCA
(colchón 160 cm)
REBECCA bed
(160 cm mattress)
225 x 234 x 134H

S-4805/04
Cama REBECCA
(colchón 180 cm)
REBECCA bed
(180 cm mattress)
245 x 234 x 134H

S-4810/04
Cama REBECCA
(colchón 200 cm)
REBECCA bed
(200 cm mattress)
265 x 234 x 134H



by Jacobo Ventura

[Traveler]



R-0695/N08 | Galán de noche TRAVELER | TRAVELER clothes-rack | 47 x 25 x 113H



by **Jacobo Ventura**

[Traveler]

R-0709/D08
Escritorio TRAVELER XL
TRAVELER XL desk
150 x 60 x 76H

A-3920/02
Silla comedor TANGO
TANGO dining chair
54,5 x 59,5 x 80H



by Jacobo Ventura

[Traveler]



R-0709/L08 | Escritorio TRAVELER XL | TRAVELER XL desk | 150 x 60 x 76H



by Jacobo Ventura

[Traveler]







by Jacobo Ventura

[Traveler]

R-0715/L08
Mesita noche TRAVELER
TRAVELER night stand
65 x 49 x 59H

R-1000/L93
CÓMODA TRAVELER
TRAVELER chest of draw.
120 x 47 x 82H

R-0715/D93
Mesita noche TRAVELER
TRAVELER night stand
65 x 49 x 59H

R-0715/D01
Mesita noche TRAVELER
TRAVELER night stand
65 x 49 x 59H



R-1000/L08 | CÓMODA TRAVELER | TRAVELER chest of drawers | 120 x 47 x 82H



[Traveler]



by Jacobo Ventura



R-0693/D91 | Chifonier TRAVELER | TRAVELER chifonier | 63 x 47 x 123H



by Jacobo Ventura

[Traveler]



by Jacobo Ventura

[Traveler]



R-0692/L84
Mueble accesorios TRAVELER
TRAVELER accessories cabinet
70 x 54 x 147H

R-0692/D37
Mueble accesorios TRAVELER
TRAVELER accessories cabinet
70 x 54 x 147H



by Jacobo Ventura

[Traveler]



En este ambiente:

A-3291/01 Cama COMPASS. 212 x 216 x 100H

R-0877/01 Mesita noche COMPASS. 80 x 50 x 48H

R-0742/01 Aparador COMPASS. 200 x 45 x 75H

R-0692/D93 Mueble accesorios TRAVELER. 70 x 54 x 147H

In this setting:

A-3291/01 COMPASS bed. 212 x 216 x 100H

R-0877/01 COMPASS night stand. 80 x 50 x 48H

R-0742/01 COMPASS sideboard. 200 x 45 x 75H

R-0692/D93 TRAVELER accessories cabinet. 70 x 54 x 147H





by Jacobo Ventura

[Compass]

Cama COMPASS bed

A-3290/01 192 x 216 x 100H (Colchón/Matr. 160 x200)

A-3291/01 212 x 216 x 100H (Colchón/Matr. 180 x200)

A-3292/01 232 x 216 x 100H (Colchón/Matr. 200 x200)

R-0877/01

Mesita noche COMPASS

COMPASS night stand

80 x 50 x 48H

R-0742/01 | Aparador COMPASS | COMPASS sideboard | 200 x 45 x 75H



CONTEMPORARY BATH COLLECTIONS

ADRA, LUXURY BATH FURNITURE

Alexandra, en su afán por ofrecer un servicio integral a sus clientes, ha creado la colección ADRA, auténticas piezas de lujo para dar un impulso definitivo al mobiliario de baño. Una amplia gama de producto que nace de la unión de métodos de fabricación artesanal y la tecnología más puntera.

Alexandra, in an effort to fulfil all our clients' needs, presents ADRA, its luxury bathroom furniture collection. A wide range of products created from the fusion between handcrafted manufacturing methods and the latest technology.

B-1405/01 Mueble baño TUBULAR bath cabinet | 190 x 52 x 35H B-1097 Espejo con luz LED · Mirror with LED lighting | 170 x 50H
B-7520 Lavabo ESLIDA washbasin | 60 X 40 X 11H B-7005/02 Grifo LOUNGE faucet | 23 x 18H

Descubra la colección completa en:
www.coleccionalexandra.com

Explore the entire collection at:
www.coleccionalexandra.com



En este ambiente:

A-3186/02. Cama MASTER. 200 x 216 x 100H
A-3115/0223. Mesita de noche MASTER. 60 x 48 x 52H
S-1475/10. Banqueta IRIS. 122 x 43 x 42H
S-1060/06. Sillón CRICKET. 54,5 x 59,5 x 80H

In this setting:

A-3186/02. MASTER bed. 200 x 216 x 100H
A-3115/0223. MASTER night stand. 60 x 48 x 52H
S-1475/10. IRIS bench. 122 x 43 x 42H
S-1060/06. CRICKET armchair. 54,5 x 59,5 x 80H



by **Jacobo Ventura**

[Master]



Cama MASTER bed
A-3185/02 180 x 216 x 100H (Colchón/Matr. 160 x200)
A-3186/02 200 x 216 x 100H (Colchón/Matr. 180 x200)
A-3187/02 220 x 216 x 100H (Colchón/Matr. 200 x200)

A-3115/0223
 Mesita noche MASTER
 MASTER night stand
 60 x 48 x 52H

Cama MASTER bed
A-3185/01 180 x 216 x 100H (Colchón/Matr. 160 x200)
A-3186/01 200 x 216 x 100H (Colchón/Matr. 180 x200)
A-3187/01 220 x 216 x 100H (Colchón/Matr. 200 x200)



by Jacobo Ventura

[Master XL]

Cama MASTER XL bed
A-3220/01 | 321 x 222 x 100H (Colchón/Matrr. 160 x200)
A-3215/01 | 341 x 222 x 100H (Colchón/Matrr. 180 x200)
A-3225/01 | 361 x 222 x 100H (Colchón/Matrr. 200 x200)

A-3115/0728
Mesita noche MASTER
MASTER night stand
60 x 48 x 52H





by *Jacobo Ventura*

[Master]



A-3115/0728
Mesita noche MASTER
MASTER night stand
60 x 48 x 52H





by Jacobo Ventura

[Master]



A-3175/0421 | Escritorio MASTER | MASTER desk | 140 x 60 x 75H



by Jacobo Ventura

[Master]

A-3100/0291 | Cómoda MASTER | MASTER chest of drawers | 118 x 48 x 97H



S-5100/04
Mesita noche MERCURY
MERCURY night stand
61 x 47 x 55H

[Mercury]

By Jacobo Ventura

S-5100/02

Mesita noche MERCURY
MERCURY night stand
(1 cajón / 1 drawer)
61 x 47 x 55H

S-5105/02

Consola MERCURY 130
MERCURY 130 console
(2 cajones / 2 drawers)
130 x 50 x 90H
(como foto / as picture)

S-5110/02

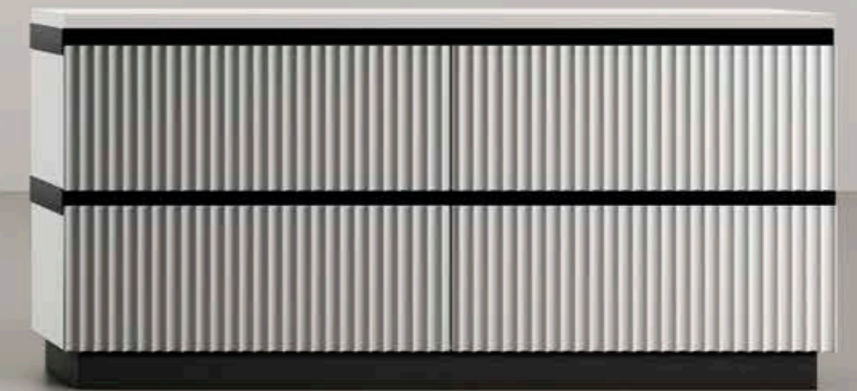
Consola MERCURY 160
MERCURY 160 console
(2 cajones / 2 drawers)
160 x 50 x 90H

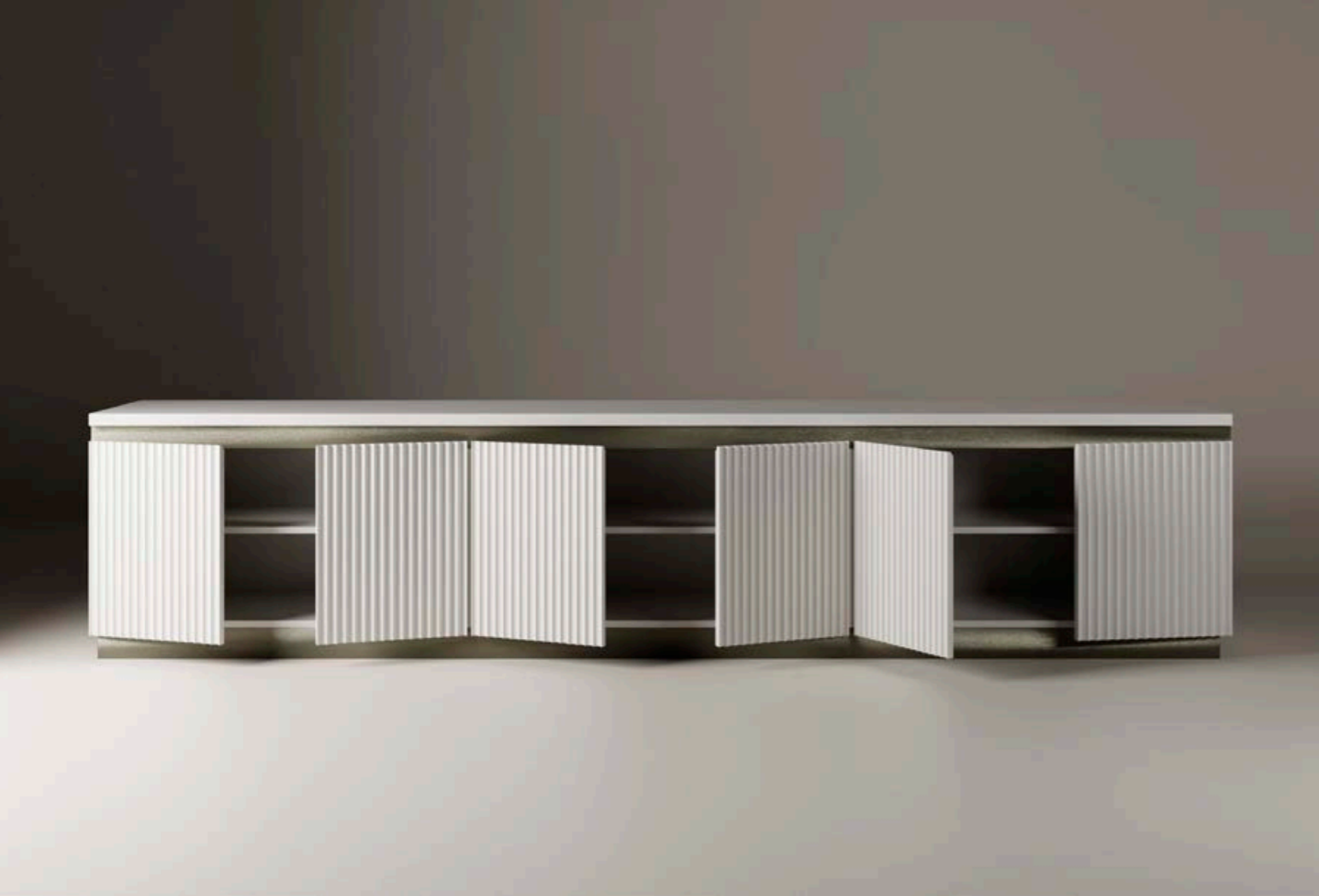
S-5100/03

Mesita noche MERCURY
MERCURY night stand
61 x 47 x 55H

S-5115/01

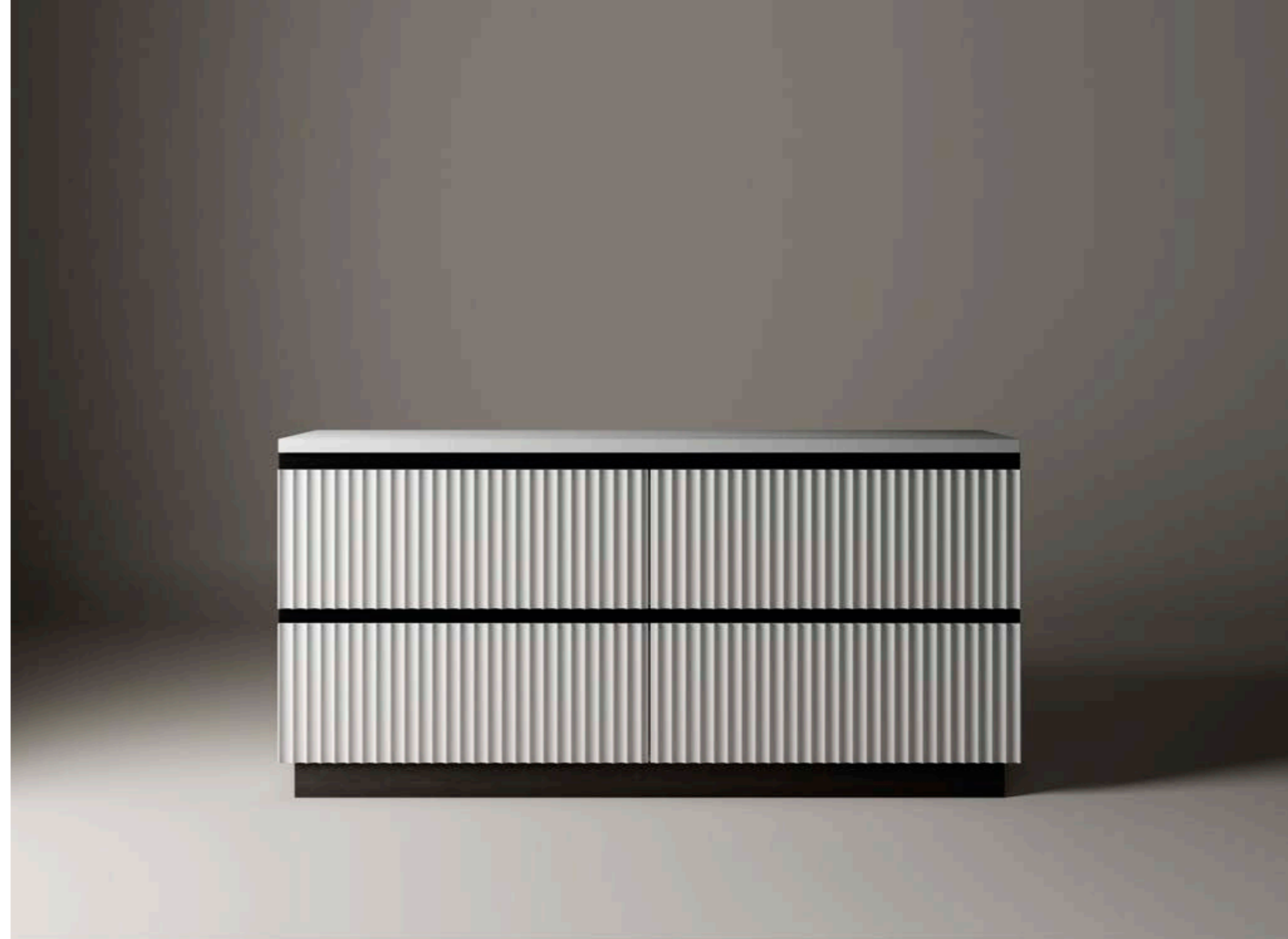
Aparador MERCURY
MERCURY sideboard
(4 cajones / 4 drawers)
160 x 47 x 77H





by Jacobo Ventura

[Mercury]





by Jacobo Ventura

[Mercury]



S-5105/02
 Consola MERCURY 130
 MERCURY 130 console
 130 x 50 x 90H
 (2 cajones / 2 drawers)
 (como foto / as picture)

S-5110/02
 Consola MERCURY 160
 MERCURY 160 console
 (2 cajones / 2 drawers)
 160 x 50 x 90H



Cama ORIENT bed

- A-3285/01 186 x 225 x 110H (Colchón/Matr. 160 x200)
- A-3286/01 206 x 225 x 110H (Colchón/Matr. 180 x200)
- A-3287/01 226 x 225 x 110H (Colchón/Matr. 200 x200)

En este ambiente:

- A-3286/01 Cama ORIENT. 206 x 225 x 110H
- S-5100/03 Mesita noche MERCURY. 61 x 47 x 55H
- S-5115/01 Aparador MERCURY. 160 x 47 x 77H
- A-4400/02 Chaise longue DUNO. 185 x 83 x 72H
- S-1070/02 Sillón BLOOMS. 90 x 80 x 72H

In this setting:

- A-3286/01 ORIENT bed. 206 x 225 x 110H
- S-5100/03 MERCURY night stand. 61 x 47 x 55H
- S-5115/01 MERCURY sideboard. 160 x 47 x 77H
- A-4400/02 DUNO chaise longue. 185 x 83 x 72H
- S-1070/02 BLOOMS armchair. 90 x 80 x 72H



by **Jacobo Ventura**

[Orient]

Cama ORIENT bed

A-3285/01 186 x 225 x 110H (Colchón/Mattr. 160 x200)

A-3286/01 206 x 225 x 110H (Colchón/Mattr. 180 x200)

A-3287/01 226 x 225 x 110H (Colchón/Mattr. 200 x200)



by Jacobo Ventura

[Grace]



A-3575/01 | Banqueta GRACE | GRACE bench | 190 x 65 x 56H



[Nimes]

A-4017/02
Puff cuadrado NIMES
NIMES square pouff
120 x 120 x 40H
(como foto / as picture)

A-4018/05
Puff rectangular NIMES
NIMES rectangular pouff
110 x 60 x 40H

A-4019/02
Puff redondo NIMES
NIMES round pouff
80D x 40H

En este ambiente:

A-3296/01. Cama TROYANO. 198 x 218 x 168H

S-1254/ELXX. Mesita noche VALENTINA. 73 x 49 x 55H

L-3007/101. Pie lámpara TRAVELER. 15 x 15 x 58H

P-1011/98. Pantalla. 55D x 35H

S-1227/ELXX. Cómoda VALENTINA. 120 x 49 x 106H

S-1131/16. Banqueta FELIPE. 115 x 45 x 45H

In this setting:

A-3296/01. TROYANO bed. 198 x 218 x 168H

S-1254/ELXX. VALENTINA night stand. 73 x 49 x 55H

L-3007/101. TRAVELER lamp base. 15 x 15 x 58H

P-1011/98. Lampshade. 55D x 35H

S-1227/ELXX. VALENTINA chest of draw. 120 x 49 x 106H

S-1131/16. FELIPE bench. 115 x 45 x 45H

Cama TROYANO bed

A-3295/01 178 x 218 x 168H (Colchón/Matrr. 160 x200)

A-3296/01 198 x 218 x 168H (Colchón/Matrr. 180 x200)

A-3297/01 218 x 218 x 168H (Colchón/Matrr. 200 x200)





by Jacobo Ventura

[Valentina]



by Jacobo Ventura

[Valentina]

B-0795/13 Mueble baño VALENTINA bath cabinet | 145 x 49 x 81H A-0775/OCXX Espejo COMPASS mirror | 140 x 140H S-6943 Lavabo GAIOS washbasin | 40D x 18H B-7050/02 Grifo MUSE faucet | 15 x 31H



En este ambiente:

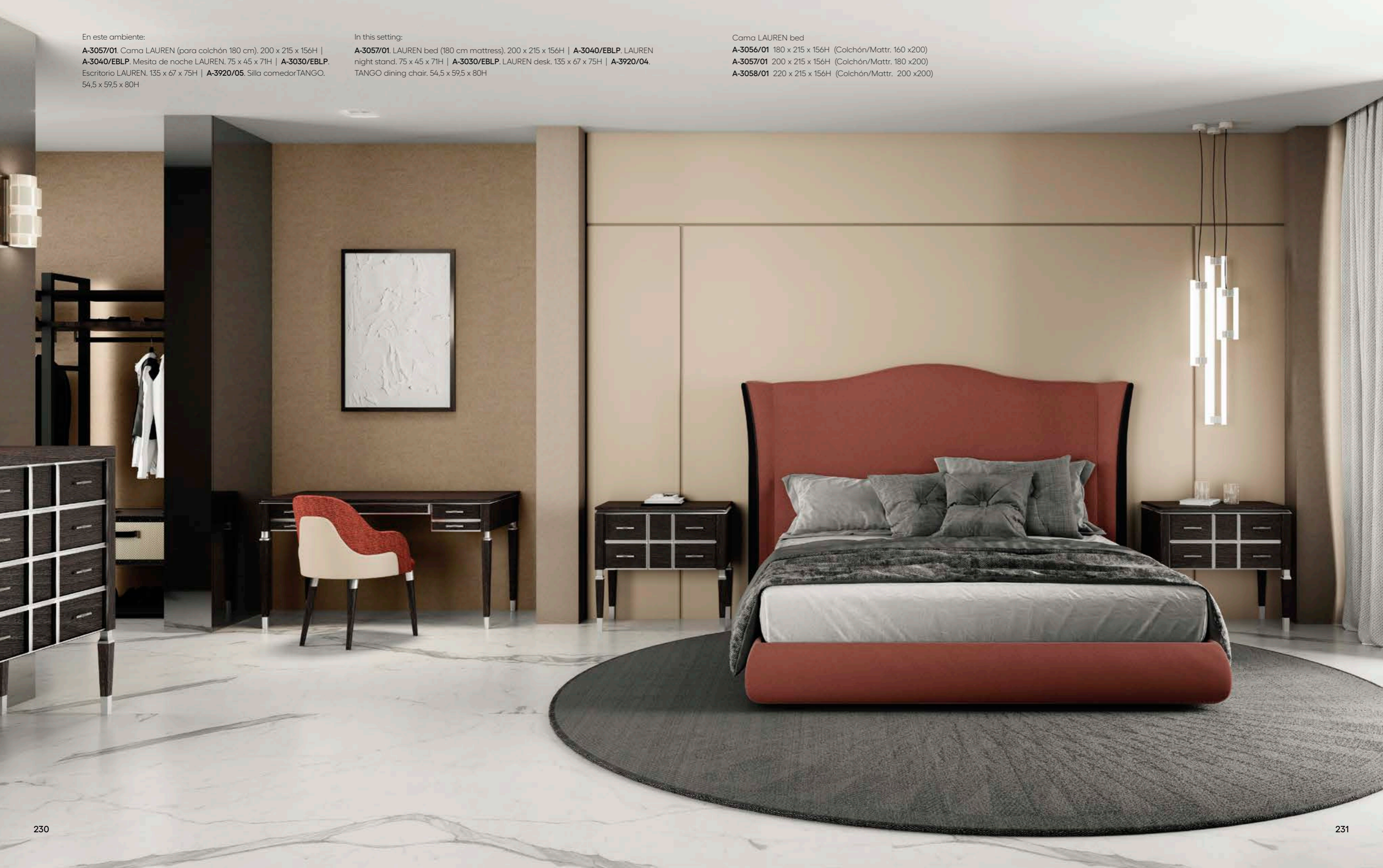
A-3057/01. Cama LAUREN (para colchón 180 cm). 200 x 215 x 156H | **A-3040/EBLP.** Mesita de noche LAUREN. 75 x 45 x 71H | **A-3030/EBLP.** Escritorio LAUREN. 135 x 67 x 75H | **A-3920/05.** Silla comedor TANGO. 54,5 x 59,5 x 80H

In this setting:

A-3057/01. LAUREN bed (180 cm mattress). 200 x 215 x 156H | **A-3040/EBLP.** LAUREN night stand. 75 x 45 x 71H | **A-3030/EBLP.** LAUREN desk. 135 x 67 x 75H | **A-3920/04.** TANGO dining chair. 54,5 x 59,5 x 80H

Cama LAUREN bed

A-3056/01 180 x 215 x 156H (Colchón/Matr. 160 x200)
A-3057/01 200 x 215 x 156H (Colchón/Matr. 180 x200)
A-3058/01 220 x 215 x 156H (Colchón/Matr. 200 x200)





by Jacobo Ventura

[Lauren]





by Jacobo Ventura

[Lauren]





MAPA DE PRODUCTO / PRODUCT MAP

INFORMACIÓN TÉCNICA /
TECHNICAL INFORMATION

Los acabados ofrecidos para cada colección en este anexo técnico son una selección que Alexandra recomienda a sus clientes. Contacte con su asesor comercial para conocer todas las posibilidades de cada colección.

Asimismo, Alexandra está perfectamente capacitada para fabricar productos a medida diseñados por sus clientes, contando con un departamento técnico que le ofrece una estrecha colaboración para conseguir los mejores resultados bajo los más altos estándares de calidad y adaptándose al presupuesto establecido.

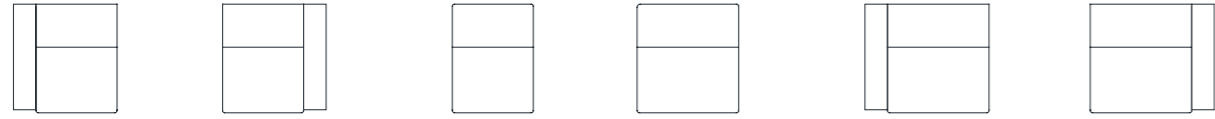
Los acabados mostrados en estas fotografías son orientativos, pudiendo sufrir variaciones al ser elaborados artesanalmente o por las alteraciones propias de la madera sobre la que se aplica.

The finishes offered in this technical annex for each collection are a selection that Alexandra recommends to its clients. Contact your commercial advisor to find out all the options for each collection.

Alexandra specializes in manufacturing custom-made products designed by its clients, with the expertise of its technical department offering close collaboration to achieve the very best results with the highest possible quality within the budget.

Being handcrafted products, the finishes in the photos are approximate and may be subject to change due to variations in the wood on which they are applied.

Atlanta



E-4117*
101 x 106/163 x 75/98H
C.O.M. 1: 5,5 m. / 1,5 m²
C.O.M. 2: 6 m.
C.O.M. 3: 12 m²

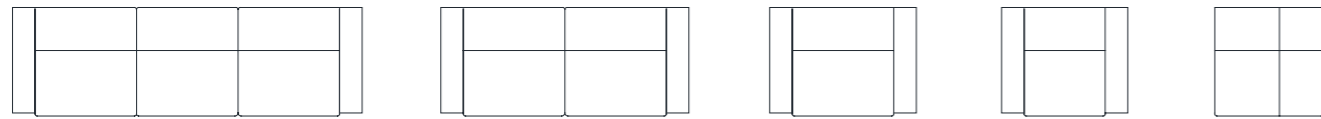
E-4118*
101 x 106/163 x 75/98H
C.O.M. 1: 5,5 m. / 1,5 m²
C.O.M. 2: 6 m.
C.O.M. 3: 12 m²

E-4119*
79 x 106/163 x 75/98H
C.O.M. 2: 5 m.
C.O.M. 3: 10 m²

E-4111*
99 x 106/163 x 75/98H
C.O.M. 2: 5,8 m.
C.O.M. 3: 11,5 m²

E-4107*
121 x 106/163 x 75/98H
C.O.M. 1: 6,5 m. / 1,5 m²
C.O.M. 2: 7 m.
C.O.M. 3: 14 m²

E-4108*
121 x 106/163 x 75/98H
C.O.M. 1: 6,5 m. / 1,5 m²
C.O.M. 2: 7 m.
C.O.M. 3: 14 m²



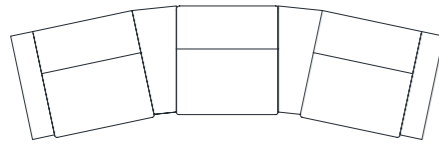
E-4105*
341 x 106/163 x 75/98H
C.O.M. 1: 18,2 m. / 3 m²
C.O.M. 2: 19,8 m.
C.O.M. 3: 39,5 m²

E-4106*
242 x 106/163 x 75/98H
C.O.M. 1: 12,4 m. / 3 m²
C.O.M. 2: 14 m.
C.O.M. 3: 28 m²

E-4109*
143 x 106/163 x 75/98H
C.O.M. 1: 6,2 m. / 3 m²
C.O.M. 2: 8,2 m.
C.O.M. 3: 16,5 m²

E-4110*
123 x 106/163 x 75/98H
C.O.M. 1: 6,2 m. / 3 m²
C.O.M. 2: 7,5 m.
C.O.M. 3: 15 m²

E-4114*
106 x 106 x 75/98H
C.O.M. 2: 7,5 m.
C.O.M. 3: 15 m²



E-4120*
422 x 130/185 x 75/98H
C.O.M. 1: 20 m. / 8 m²
C.O.M. 2: 24,5 m.
C.O.M. 3: 49 m²



A-4115
24 x 103 x 62H
C.O.M. 1: 0,5 m. / 2 m²
C.O.M. 2: 1,5 m.
C.O.M. 3: 2,5 m²



A-4116
48 x 103 x 62H
C.O.M. 1: 0,5 m. / 2 m²
C.O.M. 2: 2 m.
C.O.M. 3: 3 m²

ACABADO PATAS / LEGS FINISH
Madera / Wood



Ébano**
Ebony**

Nogal Deco**
Deco walnut**

Lacado brillo, satinado o mate / Gloss, satin or matt lacquer



Blanco
White

Crema
Cream

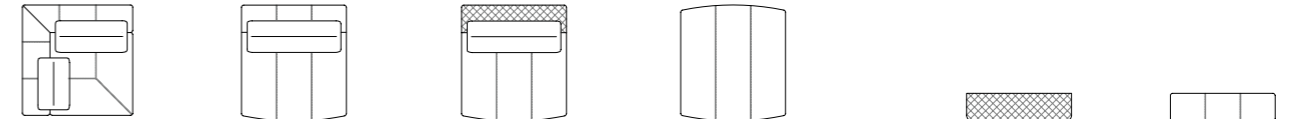
Hielo
Ice

Negro
Black

- **C.O.M. 1:** Tela (m.) / Piel brazo (m²) | Fabric (m.) / Leather arm (m²)
- **C.O.M. 2:** Todo tela (m.) | Just fabric (m.)
- **C.O.M. 3:** Todo piel (m²) | Just leather (m²)

(*) Con mecanismo eléctrico relax. (***) Acabado disponible en versión LUX.
(* With recliner motion device. (***) Finish available in LUX version.

Bellagio



A-4206
100 x 100 x 71H
C.O.M. 1: 7,5 m.
C.O.M. 2: 15 m²

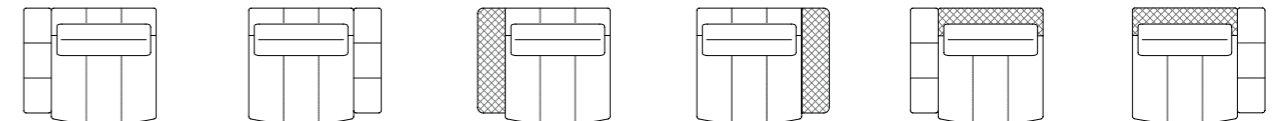
A-4208
95 x 105 x 71H
C.O.M. 1: 5,5 m.
C.O.M. 2: 10,5 m²

A-4209*
95 x 105 x 71H
C.O.M. 1: 6,25 m.
C.O.M. 2: 12 m²

A-4207
95 x 105 x 45H
C.O.M. 1: 3,1 m.
C.O.M. 2: 6 m²

A-4216
brazo contrachapado / plywood arm
C.O.M. 1: 2,5 m.
C.O.M. 2: 5 m²

A-4217
brazo tapizado / upholstered arm
C.O.M. 1: 2,5 m.
C.O.M. 2: 5 m²



A-4200
120 x 105 x 71H
C.O.M. 1: 7,5 m.
C.O.M. 2: 15 m²

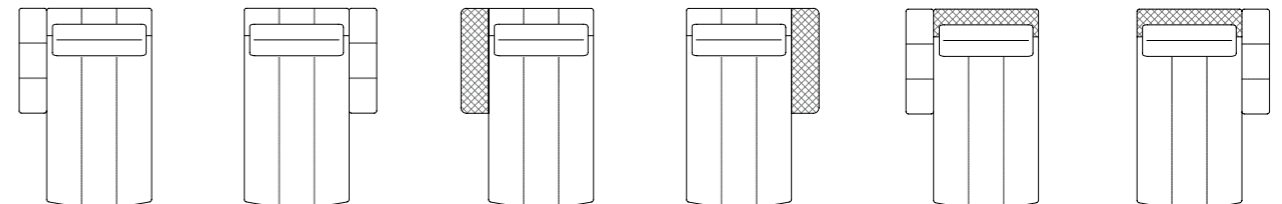
A-4201
120 x 105 x 71H
C.O.M. 1: 7,5 m.
C.O.M. 2: 15 m²

A-4202
120 x 105 x 71H
C.O.M. 1: 8 m.
C.O.M. 2: 16 m²

A-4203
120 x 105 x 71H
C.O.M. 1: 8 m.
C.O.M. 2: 16 m²

A-4204*
120 x 105 x 71H
C.O.M. 1: 8,5 m.
C.O.M. 2: 19 m²

A-4205*
120 x 105 x 71H
C.O.M. 1: 8,5 m.
C.O.M. 2: 19 m²



A-4210
120 x 180 x 71H
C.O.M. 1: 9 m.
C.O.M. 2: 16 m²

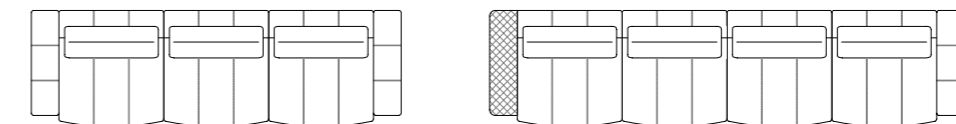
A-4211
120 x 180 x 71H
C.O.M. 1: 9 m.
C.O.M. 2: 16 m²

A-4212
120 x 180 x 71H
C.O.M. 1: 9 m.
C.O.M. 2: 16 m²

A-4213
120 x 180 x 71H
C.O.M. 1: 9 m.
C.O.M. 2: 16 m²

A-4214*
120 x 180 x 71H
C.O.M. 1: 9 m.
C.O.M. 2: 16 m²

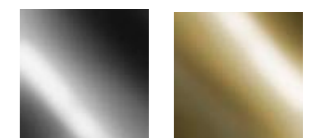
A-4215*
120 x 180 x 71H
C.O.M. 1: 9 m.
C.O.M. 2: 16 m²



A-4221
335 x 105 x 71H
C.O.M. 1: 25 m.
C.O.M. 2: 50 m²

A-4220
430 x 105 x 71H
C.O.M. 1: 33 m.
C.O.M. 2: 65 m²

ACABADO PATAS / LEGS FINISH
Hierro / Iron



Níquel negro brillo
Glossy black nickel

Latón brillo
Glossy brass

(*) NOTA:
Cuando el respaldo es de contrachapado el módulo incluye un rulo de 65 cm y diámetro 10 cm.

(*) NOTICE:
When the backrest is made of plywood, the module includes a 65 cm bolster with a diameter of 10 cm

- **C.O.M. 1:** Todo tela (m.) | Just fabric (m.)
- **C.O.M. 2:** Todo piel (m²) | Just leather (m²)

Boston Pure



A-4620 / E-4620* 130 x 104 x 78H C.O.M. 8 m. / 8,7 m.	A-4621 / E-4621* 160 x 104 x 78H C.O.M. 9,1 m. / 10 m.	A-4622 / E-4622* 200 x 104 x 78H C.O.M. 10,5 m. / 11 m.	A-4611 / E-4611* 70 x 104 x 78H C.O.M. 4,2 m. / 5 m.	A-4612 / E-4612* 100 x 104 x 78H C.O.M. 4,8 m. / 5,7 m.	A-4613 / E-4613* 140 x 104 x 78H C.O.M. 6 m. / 7 m.	A-4623 / E-4623* 100 x 104 x 78H C.O.M. 6,6 m. / 7,5 m.

A-4624 / E-4624* 130 x 104 x 78H C.O.M. 7,7 m. / 8,7 m.	A-4625 / E-4625* 170 x 104 x 78H C.O.M. 9 m. / 10,5 m.	A-4626 / E-4626* 100 x 104 x 78H C.O.M. 6,6 m. / 7,5 m.	A-4627 / E-4627* 130 x 104 x 78H C.O.M. 7,7 m. / 8,7 m.	A-4628 / E-4628* 170 x 104 x 78H C.O.M. 9 m. / 10,5 m.

A-4629 137 x 104 x 78H C.O.M. 8,3 m.	A-4630 137 x 104 x 78H C.O.M. 8,3 m.	A-4631 130 x 180 x 78H C.O.M. 8,1 m.	A-4632 130 x 180 x 78H C.O.M. 8,1 m.

A-4634 134 x 104 x 42H C.O.M. 7,5 m.	A-4633 134 x 104 x 42H C.O.M. 7,5 m.	A-4614 104 x 104 x 42H C.O.M. 4,3 m.	A-4615 104 x 70 x 42H C.O.M. 2,8 m.	A-4616 60 x 60 x 42H C.O.M. 2 m.

Cosmopol



A-4513 / E-4513* 80 x 105 x 75H C.O.M. 4,6 m	A-4512 / E-4512* 124 x 105 x 75H C.O.M. 7,2 m	A-4528 / E-4528* 102 x 105 x 75H C.O.M. 6 m	A-4529 / E-4529* 102 x 105 x 75H C.O.M. 6 m	A-4511 / E-4511* 204 x 105 x 75H C.O.M. 11,8 m	A-4510 / E-4510* 284 x 105 x 75H C.O.M. 16,4 m	A-4526 / E-4526* 364 x 105 x 75H C.O.M. 21 m

A-4530 110 x 110 x 75H C.O.M. 7 m	A-4509 80 x 170 x 75H C.O.M. 6,4 m	A-4507 102 x 170 x 75H C.O.M. 7,5 m	A-4508 102 x 170 x 75H C.O.M. 7,5 m	A-4506 124 x 170 x 75H C.O.M. 9 m	A-4505 204 x 170 x 75H C.O.M. 15,4 m	A-4518 158 x 105 x 75H C.O.M. 6,1 m	A-4519 158 x 105 x 75H C.O.M. 6,1 m

A-4525 238 x 105 x 75H C.O.M. 11,7 m	A-4524 238 x 105 x 75H C.O.M. 11,7 m	A-4522 318 x 105 x 75H C.O.M. 16,3 m	A-4523 238 x 105 x 75H C.O.M. 16,3 m

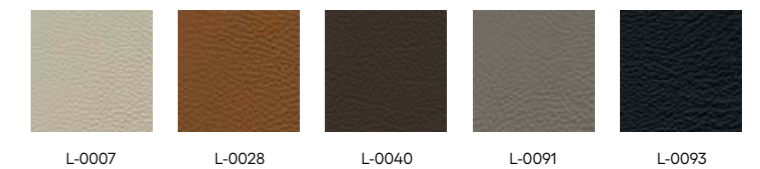
A-4516 284 x 170 x 75H C.O.M. 18,2 m	A-4517 284 x 170 x 75H C.O.M. 18,2 m	A-4521 318 x 170 x 75H C.O.M. 17,6 m	A-4520 318 x 170 x 75H C.O.M. 17,6 m

A-4514 80 x 84 x 42H C.O.M. 2 m	A-4515 136 x 84 x 42H C.O.M. 2,8 m



A-2440
43 x 30H

REVISTERO COSMOPOL / COSMOPOL MAGAZINE BAG
Piel natural / Natural leather



(*) Con mecanismo eléctrico relax.
(*) With recliner motion device.

(*) Con mecanismo eléctrico relax.
(*) With recliner motion device.

Falcon



S-1075 | 77 x 92 x 94H
C.O.M.: 2,5 m.

Acabados
Finishes

ESTRUCTURA Y PATAS / STRUCTURE AND LEGS
Madera de fresno / Ash wood



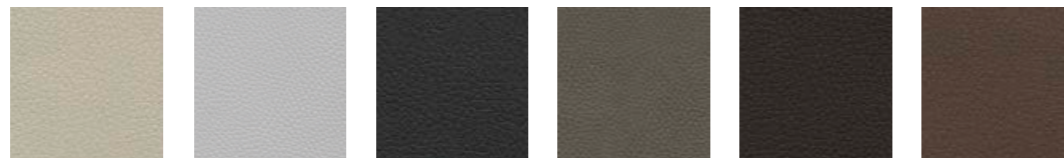
Hueso
Bone

Tabaco
Tobacco

Noche
Midnight

Latte

PIEZA TRASERA / BACK
Polipiel / Synthetic leather



Q-1029

Q-1013

Q-1005

Q-1017

Q-1002

Q-1018

Consultar toda la colección de polipieles en muestrario "Modena" (pag. 271)
Check the entire synthetic leather collection in the "Modena" sample book (pag. 271)

Gio Grace



S-1035 | 71 x 84 x 94H
C.O.M.: 3 m.



A-3575 | 190 x 65 x 56H
C.O.M. 4,7 m.

Acabados
Finishes

ESTRUCTURA Y PATAS / STRUCTURE AND LEGS
Madera de fresno / Ash wood



Hueso
Bone

Tabaco
Tobacco

Noche
Midnight

Latte

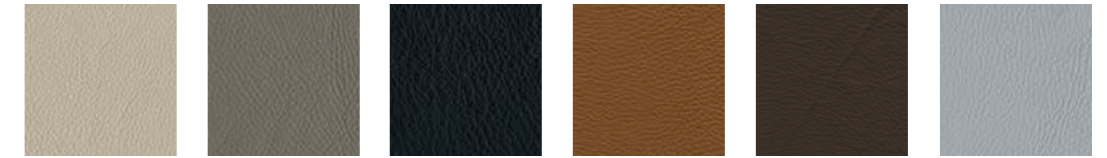
Nido



S-1050 | 100 x 120 x 70H
C.O.M.: 5 m.

Acabados
Finishes

PIEZA TRASERA / BACK
Piel natural / Natural leather



L-0007

L-0091

L-0093

L-0028

L-0040

L-0068

Flute



A-5020 | 117 x 80 x 86H
C.O.M. 6 m.

Acabados
Finishes

PATAS / LEGS
Hierro / Iron



Platium

Auro envejecido
Antique auro

Argenta envejecida
Antique argenta

Blanco texturado
Textured white

Gris texturado
Textured grey

Bronce texturado
Textured bronze

Abano Blooms Duno



BLOOMS
S-1070 | 90 x 80 x 72H
C.O.M.: 4,5 m.



ABANO
A-4405 | 290 x 95 x 80H | C.O.M.: 20 m.
A-4410 | 227 x 95 x 80H | C.O.M.: 18 m.



DUNO
A-4400 | 185 x 72 x 83H
C.O.M.: 3,6 m.

Tupé Spock Eclipse Álvaro



TUPÉ
S-1032 | 75 x 82 x 79H
C.O.M.: 3,6 m.



SPOCK
S-1025 | 83 x 83 x 107H
C.O.M.: 3,5 m.



ECLIPSE
S-1450 | 72 x 80 x 96H
C.O.M.: 3 m.



ÁLVARO
A-2451 | 119 x 97 x 108H
C.O.M.: 8 m.

Acabados Finishes

ESTRUCTURA, PATAS Y BASES / STRUCTURE, LEGS AND BASES Madera / Wood



Ébano*
Ebony* Nogal Deco*
Deco walnut* Roble centenario
Centennial oak Oro envejecido
Antique gold Plata envejecida
Antique silver Century

Lacado brillo, satinado o mate / Gloss, satin or matt lacquer



Blanco
White Crema
Cream Hielo
Ice Beige Visón
Mink Negro
Black

(*) Acabado disponible en versión LUX.
(*) Finish available in LUX version.

Ringo Durban Star



RINGO
S-1805 | 131D x 42H



S-1802 **S-1800** **S-1801**
164 x 107 x 93H 158 x 102 x 93H 164 x 107 x 93H
C.O.M. 12 m. C.O.M. 10,5 m. C.O.M. 12 m.



DURBAN
S-1501 | 139 x 53 x 99H



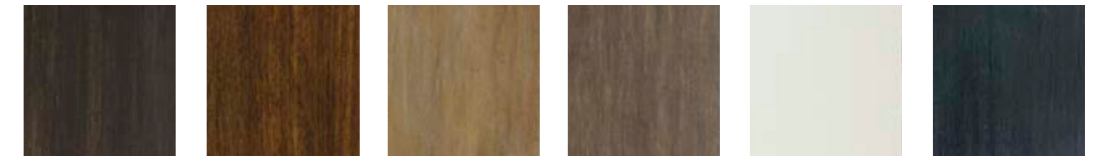
DURBAN
S-1497 | 100 x 5 x 100H
S-1509 | 135 x 5 x 135H



STAR
S-1255 | 110D

Acabados Finishes

ESTRUCTURA, PUERTAS PATAS SOFÁ / STRUCTURE, DOORS AND SOFA LEGS Madera / Wood



Ébano*
Ebony* Nogal Deco*
Deco walnut* Roble centenario
Centennial oak Gris humo
Smoke grey Blanco decapé
Decape white Antracita
Anthracite



Oro envejecido
Antique gold Plata envejecida
Antique silver Century

DETALLES OPCIONALES / OPTIONAL DETAILS Madera / Wood



Ébano
Ebony Century Oro envejecido
Antique gold Plata envejecida
Antique silver Negro
Black

(*) Acabado disponible en versión LUX.
(*) Finish available in LUX version.

Tempus



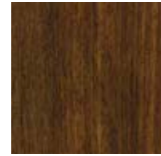
A-3455
135 x 135 x 40H

Acabados Finishes

BASE / BASE Madera / Wood



Ébano
Ebony



Nogal Deco
Deco walnut



Platium



Argenta



Auro

TABLERO / TOP Cristal templado / Tempered glass (10 mm)



Parsol gris
Grey parsol



Parsol bronce
Bronze parsol

Detroit



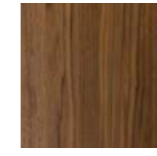
A-3310
120 x 120 x 43H



A-3311
200 x 120 x 43H

Acabados Finishes

ESTRUCTURA / STRUCTURE Nogal americano / American walnut



Natural



Ébano
Ebony

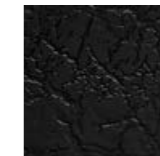
ESTRUCTURA / STRUCTURE Lacado craquelado brillo / Shiny cracked lacquer



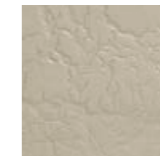
Blanco
White



Hielo
Ice



Negro
Black



Beige



Visón
Mink

Eos



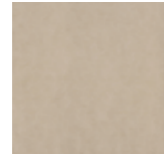
A-2990
130D x 39,5H



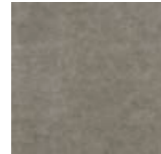
A-2985
111 x 111 x 39,5H

Acabados Finishes

ESTRUCTURA / STRUCTURE Polipiel / Synthetic leather (ref. CARINA)



F-2880



F-2881



F-2882

ZÓCALO / PLINTH

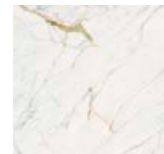


Century



Negro satinado
Satin black

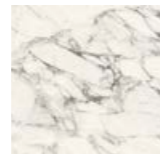
TABLERO / TOP Porcelánico pulido / Polished porcelain tile



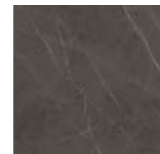
Golden white



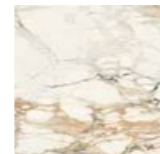
Elegant black



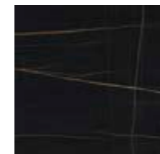
Calacatta



Imperiale



Vena Vecchia



Sahara Noir

Seven



A-2855
110D x 30H



A-2850
130 x 80 x 30H



A-2860
45D x 50H



A-2865
60D x 57H



A-2870
55D x 59H

Acabados Finishes

BASE-ESTRUCTURA / BASE-STRUCTURE Hierro / Iron



Niquel viejo
Antique nickel



Cuero viejo
Antique brass

TABLERO / TOP Espejo / Mirror

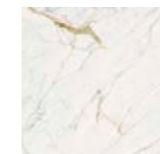


Cromado
Chrome

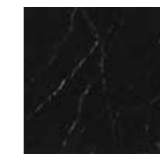


Dorado
Golden

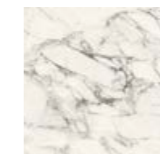
Porcelánico pulido / Polished porcelain tile (Excepto Ref. A-2870 / Except Ref. A-2870)



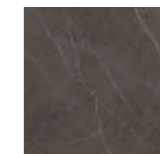
Golden white



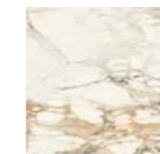
Elegant black



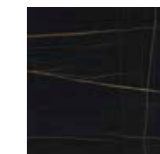
Calacatta



Imperiale



Vena Vecchia



Sahara Noir

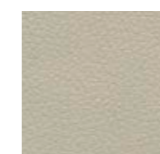
Polipiel / Synthetic leather (Ref. A-2870)



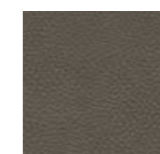
Q-1000



Q-1005



Q-1029



Q-1017

Consultar toda la colección de polipieles en muestrario "Modena" (pag. 271)
Check the entire synthetic leather collection in the "Modena" sample book (pag. 271)

Annette



A-3400
120D x 40H



A-3410
50D x 60H



A-3405
80D x 45H

Acabados Finishes

PATAS / LEGS Hierro / Iron



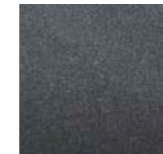
Niquel viejo
Antique nickel



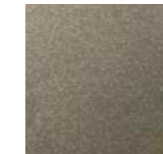
Cuero viejo
Antique brass



Blanco texturado
Textured white



Gris texturado
Textured grey

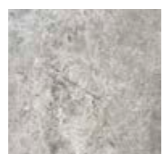


Bronce texturado
Textured bronze

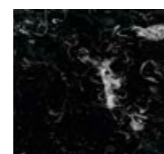
TABLERO / TOP Mármol / Marble



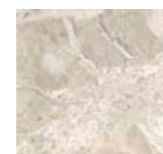
Blanco Siberia
Siberian white



Gris Amsterdam
Amsterdam grey



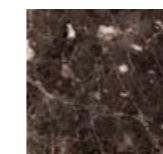
Negro Marquina
Marquina black



Beige Hermitage
Hermitage beige



Blanco arabescato
Arabescato white



Marrón imperial
Imperial brown

Cristal templado / Tempered glass (10 mm)



Parsol gris
Grey parsol



Parsol bronce
Bronze parsol

Denver



A-2810
110D x 37H



A-2815 | 120 x 120 x 37H
A-2820 | 140 x 70 x 37H



A-2830 | 55D x 45H
A-2940 | 55D x 57H



A-2825
50 x 50 x 45H



A-2930
40 x 20 x 56H



A-2920
140 x 40 x 87H

Acabados Finishes

PATAS / LEGS Hierro / Iron



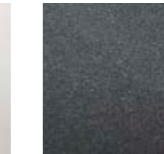
Niquel viejo
Antique nickel



Cuero viejo
Antique brass



Blanco texturado
Textured white



Gris texturado
Textured grey

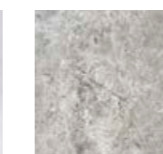


Bronce texturado
Textured bronze

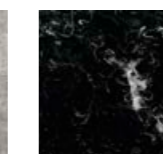
TABLERO / TOP Mármol / Marble



Blanco Siberia
Siberian white



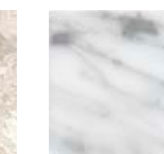
Gris Amsterdam
Amsterdam grey



Negro Marquina
Marquina black



Beige Hermitage
Hermitage beige

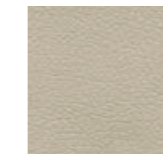


Blanco arabescato
Arabescato white

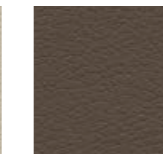


Marrón imperial
Imperial brown

Polipiel / Synthetic leather



Q-1000



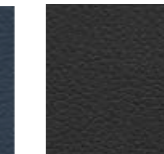
Q-1001



Q-1002



Q-1004



Q-1005

Consultar toda la colección de polipieles en muestrario "Modena" (pag. 271)
Check the entire synthetic leather collection in the "Modena" sample book (pag. 271)

Tubular



A-2635
121 x 101 x 43H



B-1400*
100 x 52 x 35H
MUEBLE BAÑO / BATH CABINET
(1 cajón / 1 drawer)



B-1410*
162 x 52 x 35H
MUEBLE BAÑO / BATH CABINET
(2 cajones / 2 drawers)



B-1405*
190 x 52 x 35H
MUEBLE BAÑO / BATH CABINET
(2 cajones / 2 drawers)

Acabados Finishes

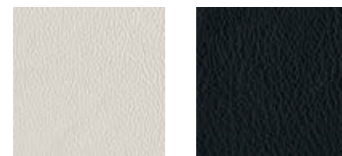
ESTRUCTURA. FRETE CAJONES (Mobiliario baño) / STRUCTURE. DRAWER FRONTS (Bath cabinets)
Polipiel / Synthetic leather



Q-1000 Q-1013 Q-1029 Q-1005 Q-1017 Q-1034

Consultar toda la colección de polipieles en muestrario "Modena" (pag. 271)
Check the entire synthetic leather collection in the "Modena" sample book (pag. 271)

FRENTE CAJÓN / DRAWER FRONT (Ref. A-2635)
Piel natural / Natural leather



L-0001 L-0093

INTERIORES / INTERIOR SIDES
Madera estratificada / Laminated wood



Dark oak

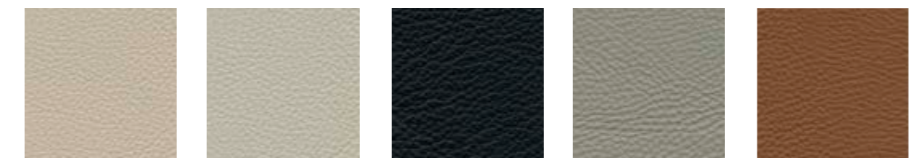
Axel



R-1015
73 x 67 x 148H
COFFEE STATION

Acabados Finishes

ESTRUCTURA Y FRETE CAJONES / STRUCTURE AND DRAWER FRONTS
Piel natural / Natural leather



Smoke Chalky Nero Acciaio Fondotinta

INTERIORES / INTERIOR SIDES
Lacado mate / Matt lacquer



Blanco Crema Hielo Pizarra Visón Negro
White Cream Ice Slate Mink Black

(*) Encimera: Solid Surface
(*) Worktop: Solid Surface



R-0698 | 101 x 71 x 42H
R-0706 | 142 x 95 x 42H
MESA CENTRO / COFFEE TABLE



R-0705
240 x 47 x 58H
MUEBLE TV / TV CABINET



R-0975
240 x 55 x 76H



R-0715
65 x 49 x 59H



R-0970
197 x 50 x 76H



R-1000
120 x 47 x 82H



R-0693
63 x 47 x 123H



R-0694
100 x 60 x 76H



R-0709
150 x 60 x 76H



R-1010*
120 x 76 x 80H
ISLA / CLOSET ISLAND



R-0695
47 x 25 x 113H
GALAN NOCHE / CLOTHES RACK



R-0704**
70 x 54 x 147H
COCKTAIL BAR / COCKTAIL BAR



R-1025**
70 x 71 x 147H
COFFEE STATION



R-0692**
70 x 54 x 147H
ACCESORIOS / ACCESSORIES



R-6000*
71 x 69 x 116H
CAJA FUERTE / SAFE



R-0980
70 x 50 x 155H



R-0985
115 x 50 x 155H



R-1020***
115 x 50 x 155H
COCKTAIL BAR / COCKTAIL BAR



R-1005
96 x 53 x 212H
ESTANTERÍA BAR / BAR SHELF

Acabados Finishes

EMPELETADO / UPHOLSTERY Piel grabada / Engraved leather



L-0001



L-0002



L-0007



L-0008



L-0021



L-0023



L-0028



L-0033



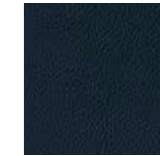
L-0034



L-0040



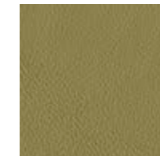
L-0068



L-0071



L-0078



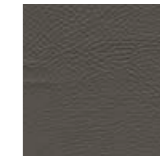
L-0084



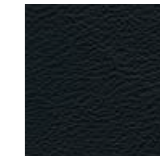
L-0090



L-0091



L-0092



L-0093

Consultar toda la colección de pieles naturales en muestrario "Valencia" (pag. 270)
Check the entire natural leather collection in the "Valencia" sample book (pag. 270)

COMPONENTES /
COMPONENTS
Piel /
Leather

PARTE SUPERIOR /
TOP SURFACE
Polipiel
Synthetic leather

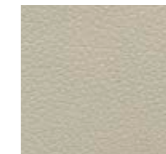
INTERIORES /
INTERIOR SIDES
Madera estratificada /
Laminated wood



Configuración LIGHT
LIGHT combination



Piedra
Stone



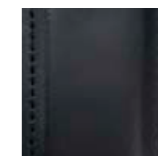
Q-1000



Light oak



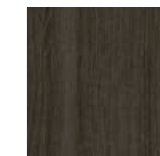
Configuración DARK
DARK combination



Negro
Black



Q-1005



Dark oak

Los acabados de las configuraciones LIGHT y DARK no son combinables entre sí
LIGHT and DARK combinations cannot be combined with each other

(*) Para tela interior ver muestrario terciopelos colección "Lisboa" / Interior fabric from "Lisboa" velvet collection

(**) Acabado interior disponible en lacado mate o satinado / Interior finish available in matt or satin lacquer

(***) Interior puertas tapizado piel natural colección "Valencia" / Upholstered interior doors with "Valencia" natural leather collection

Compass



R-0745 | 180 x 120 x 40H
R-0746 | 130 x 90 x 40H
R-0779 | 90 x 90 x 40H



R-0786
200 x 45 x 49H



R-0742
200 x 45 x 75H



R-0775 | 160 x 55 x 55H
R-0777 | 260 x 55 x 55H



R-0778
120 x 45 x 49H



R-0725
53 x 35 x 100H



R-0780
80 x 40 x 130H



A-3290 | 192 x 216 x 100H (160 cm)
A-3291 | 212 x 216 x 100H (180 cm)
A-3292 | 232 x 216 x 100H (200 cm)



R-0877
80 x 50 x 48H



R-0875 | 232 x 132 x 77H
R-0865 | 256 x 144 x 77H
R-0870 | 282 x 155 x 77H

Acabados Finishes

EMPELETADO / UPHOLSTERY Polipiel / Synthetic leather



Consultar toda la colección de polipieles en muestrario "Modena" (pag. 271)
Check the entire synthetic leather collection in the "Modena" sample book (pag. 271)

COMPONENTES / COMPONENTS Piel / Leather



Piedra
Stone

Negro
Black

INTERIORES / INTERIOR SIDES Madera estratificada / Laminated wood



Light oak

Dark oak

TAPETE MESA BILLAR / POOL TABLE SURFACE CLOTH Tela (71% lana 29% nylon) / fabric (71% wool 29% nylon)



Grey

Camel

Yellow green

Dark green

Petroleum blue

Mykonos



A-3195
240 x 110 x 74H



A-3197 | 110D x 74H
A-3198 | 160D x 74H

Acabados Finishes

BASE / BASE Hierro / Iron



Niquel viejo
Antique nickel



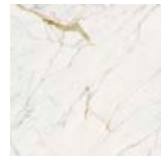
Cuero viejo
Antique brass



Blanco texturado
Textured white

TABLERO / TOP

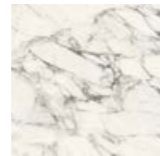
Porcelánico pulido / Polished porcelain tile



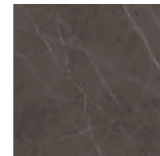
Golden white



Elegant black



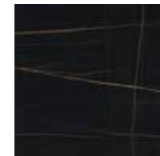
Calacatta



Imperiale



Vena Vecchia



Sahara Noir

George



A-4830
200 x 50 x 85H



A-4835
140 x 52 x 200H

Acabados Finishes

ESTRUCTURA / STRUCTURE Lacado brillo / Gloss lacquer

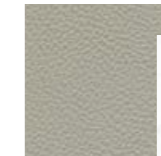


Blanco perlado
Pearl white



Gris perlado
Pearl grey

PUERTAS / DOORS



L-0010
(Piel / Leather)



White
(Porcelánico / Porcelain tile)



Century



L-0101
(Piel / Leather)



Ash grey



Century

Configuración BLANCO WHITE combination

Configuración GRIS GREY combination

Los acabados de las configuraciones BLANCO y GRIS no son combinables entre sí
WHITE and GREY combinations cannot be combined with each other

Chelsea



A-4775
230 x 120 x 76H



A-4785
290 x 120 x 76H



A-4790
180D x 76H

Acabados Finishes

PATAS Y TABLERO / LEGS AND TOP
Chapado marquetería (espiga) / Marquetry veneer (herringbone)



Hueso
Bone

Ash grey

Sand

Tobacco

Acabados disponibles en 3 versiones: Alto brillo, satinado o poro abierto mate.
Finishes available in 3 versions: High gloss, satin or matt open pore.

Iris



A-4735
193 x 49 x 90H



S-1520
128 x 51 x 171H

Acabados Finishes

ESTRUCTURA Y CAJONES-PUERTAS / STRUCTURE AND DRAWERS-DOORS
Chapado liso / Smooth veneer



Hueso
Bone

Ash grey

Sand

Tobacco

Acabados disponibles en 3 versiones: Alto brillo, satinado o poro abierto mate.
Finishes available in 3 versions: High gloss, satin or matt open pore.

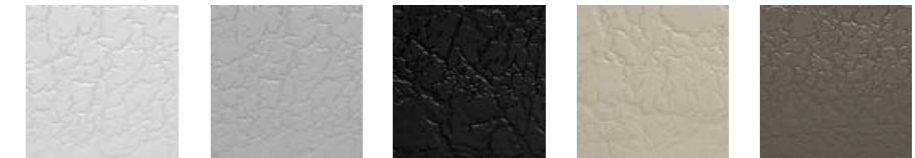
Regenta



S-5877
124 x 50 x 200H

Acabados Finishes

ESTRUCTURA Y BASE / STRUCTURE AND BASE
Lacado craquelado brillo / Shiny cracked lacquer



Blanco
White

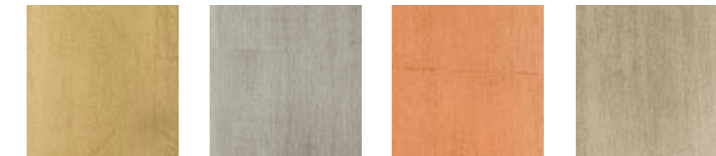
Hielo
Ice

Negro
Black

Beige

Visón
Mink

PUERTAS / DOORS
Madera / Wood



Oro envejecido
Antique gold

Plata envejecida
Antique silver

Cobre envejecido
Antique cooper

Century

Tango
Lyon
Valentina
Orleans



TANGO
A-3915 | 54,5 x 59,5 x 80H
C.O.M. 1,5 m.



TANGO
A-3920 | 54,5 x 59,5 x 80H
C.O.M. 2 m.



LYON
A-4925 | 55 x 63 x 104H
C.O.M. 2,5 m.



VALENTINA
S-1284 | 59 x 60 x 101H
C.O.M. 1,8 m.



VALENTINA
S-1283 | 59 x 60 x 101H
C.O.M. 2 m.



ORLEANS
A-4905 | 61 x 60,5 x 89H
C.O.M. 2,25 m.

Carla
Amira
Marco



CARLA
A-3910 | 56 x 64 x 81H
C.O.M. 2 m.



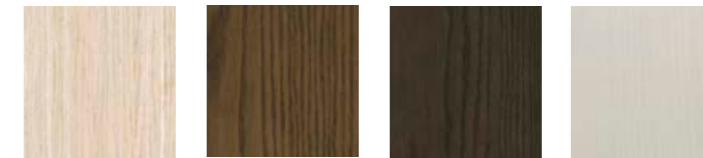
AMIRA
A-3917 | 55 x 59 x 75H
C.O.M. 2 m.



MARCO
A-3905 | 52 x 59 x 84H
C.O.M. 2 m.

Acabados
Finishes

PATAS / LEGS
Madera de fresno / Ash wood



Hueso
Bone

Tabaco
Tobacco

Noche
Midnight

Latte

Acabados
Finishes

PATAS / LEGS
Madera / Wood



Ébano*
Ebony*

Nogal Deco*
Deco walnut*

Roble centenario
Centennial oak

Auro envejecido
Antique auro

Argenta envejecida
Antique argenta

Platium

Lacado brillo, satinado o mate / Gloss, satin or matt lacquer



Blanco
White

Crema
Cream

Hielo
Ice

Beige

Visón
Mink

Negro
Black

DETALLES OPCIONALES / OPTIONAL DETAILS (Refs. A-3915 & A-3920)



Century

Plata
Silver

Oro
Gold

(*) Acabado disponible en versión LUX.
(*) Finish available in LUX version.

Luna



A-4855
97 x 51 x 185H

Acabados Finishes

ESTRUCTURA / STRUCTURE Madera de fresno / Ash wood



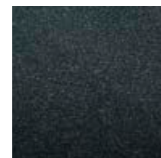
Hueso
Bone

Tabaco
Tobacco

Noche
Midnight

Latte

PATAS / LEGS Hierro / Iron



Negro onix
Onix black

TRASERA INTERIOR TAPIZADA (OPCIONAL) / (OPTIONAL) UPHOLSTERED INTERIOR BACK Terciopelo / Velvet



Color 20

Color 34

Color 17

LUNA DECORATIVA / DECORATIVE MOON Acabado como foto / Finish as picture

Master



A-3250 | 280 x 109 x 86H (M) | C.O.M. 20 m.
A-3255 | 390 x 109 x 86H (L) | C.O.M. 28,5 m.



A-3100
118 x 48 x 97H



A-3175
140 x 60 x 75H



A-3191 | 240 x 120 x 74H
A-3155 | 160 x 160 x 74H



A-3190
180 x 48,5 x 74H



A-3170
259 x 100 x 76H



A-3115
60 x 48 x 52H



A-3185 | 180 x 216 x 100H (160 cm)
A-3186 | 200 x 216 x 100H (180 cm)
A-3187 | 220 x 216 x 100H (200 cm)



A-3220 | 321 x 222 x 100H (160 cm)
A-3215 | 341 x 222 x 100H (180 cm)
A-3225 | 361 x 222 x 100H (200 cm)

Acabados Finishes

ESTRUCTURA Y FRENTE CAJONES-PUERTAS / STRUCTURE AND DRAWER FRONTS-DOORS Lacado brillo / Gloss lacquer



Blanco
White

Crema
Cream

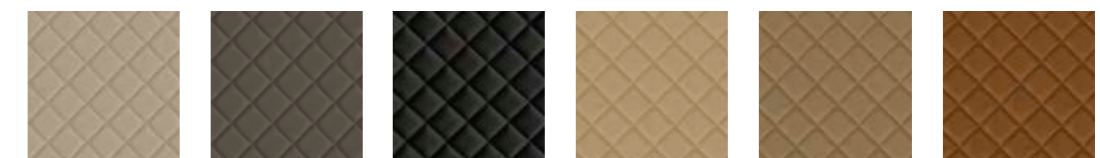
Hielo
Ice

Beige

Visón
Mink

Negro
Black

DETALLES / DETAILS Piel bordada / Embroidered leather



L-0007

L-0091

L-0093

L-0021

L-0023

L-0028

Mercury



S-5100
60 x 47 x 55H
(1 cajón / 1 drawer)



S-5105
130 x 50 x 90H
(2 cajones / 2 drawers)



S-5110
160 x 50 x 90H
(2 cajones / 2 drawers)



S-5120
160 x 47 x 77H
(6 puertas / 6 doors)



S-5115
160 x 47 x 77H
(4 cajones / 4 drawers)

Acabados Finishes

ESTRUCTURA Y FRENTE CAJONES-PUERTAS / STRUCTURE AND DRAWER FRONTS-DOORS
Lacado mate o satinado / Matt or satin lacquer



Negro
Black

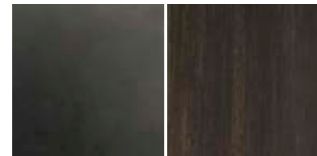


Crema
Cream

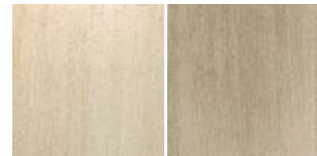


Hielo
Ice

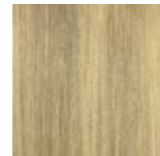
DETALLES metal + PATAS-BASE madera / Metallic DETAILS + Wooden LEGS-BASEBOARD



Black metal + Ébano*
Black metal + Ebony



Platinum + Century*

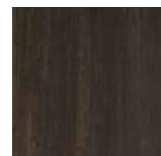


Bronce antiguo
Antique bronze



Plata antiguo
Antique silver

INTERIOR CAJONES / DRAWER INTERIOR



Ébano
Ebony

(*) Para patas-base madera / For wooden legs-baseboard

Lauren



A-3040
75 x 45 x 71H
(2 cajones / 2 drawers)



A-3056 | 180 x 215 x 156H (160 cm)
A-3057 | 200 x 215 x 156H (180 cm)
A-3058 | 220 x 215 x 156H (200 cm)



A-3030
135 x 67 x 75H



A-3000
100 x 48 x 210H



A-3065
195 x 50 x 93H
(4 puertas / 4 doors)



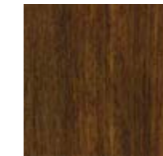
A-3060
95 x 50 x 113H
(4 cajones / 4 drawers)



A-3015
180 x 40 x 85H

Acabados Finishes

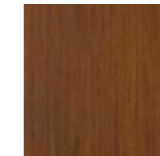
ESTRUCTURA Y CAJONES-PUERTAS / STRUCTURE AND DRAWERS-DOORS
Madera / Wood



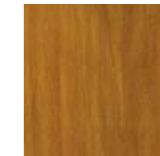
Nogal Deco*
Deco walnut*



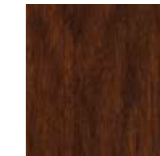
Ébano*
Ebony*



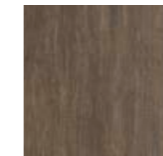
Nogal*
Walnut*



Miel*
Honey*



Caoba*
Mahogany*



Gris humo
Smoke grey



Roble centenario
Centennial oak



Blanco velado
Fogged white



Blanco decapé
Decape white



Antracita
Anthracite

DETALLES OPCIONALES / OPTIONAL DETAILS
Madera / Wood



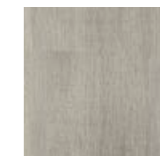
Negro
Black



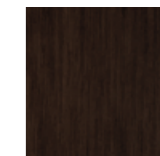
Century



Oro envejecido
Antique gold



Plata envejecida
Antique silver



Nogal intenso
Deep walnut

(*) Acabado disponible en versión LUX.
(*) Finish available in LUX version.

Valentina



S-1296 | 220 x 120 x 74H (Vintage)
S-1298 | 220 x 120 x 74H (Luxor)
S-1299 | 210 x 140 x 74H (Luxor)



S-1295 | 160 x 160 x 74H (Vintage)
S-1297 | 160 x 160 x 74H (Luxor)



S-1244
191 x 50 x 79,5H
APARADOR / SIDEBBOARD
(2 puertas+3 cajones / 2 doors+3 drawers)



S-1242
189 x 49 x 79H
MUEBLE TV / TV CABINET
(6 cajones / 6 drawers)



S-1227
120 x 49 x 106H
(4 cajones / 4 drawers)



S-1251
50 x 49 x 130H
(5 cajones / 5 drawers)



S-1254
73 x 49 x 54,5H
(2 cajones / 2 drawers)



S-1252
170 x 60 x 74H
COQUETA / DRESSING TABLE
(2 cajones / 2 drawers)



B-0785
74 x 49 x 81H
MUEBLE BAÑO / BATH CABINET
(3 cajones / 3 drawers)



B-0795
145 x 49 x 81H
MUEBLE BAÑO / BATH CABINET
(6 cajones / 6 drawers)

Acabados
Finishes

LUXOR EDITION



HERRAJES / FITTINGS
Cromo / chrome



DETALLES PIEL / LEATHER DETAILS
Gris claro / Light grey

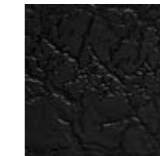
ESTRUCTURA, PUERTAS Y CAJONES. TABLERO / STRUCTURE, DOORS AND DRAWERS. TOP
Lacado craquelado brillo / Shiny cracked lacquer



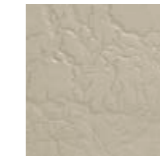
Blanco
White



Hielo
Ice



Negro
Black

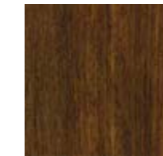


Beige

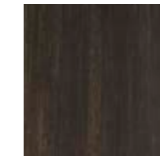


Visión
Mink

Madera / Wood

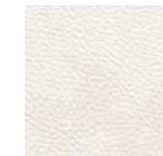


Nogal Deco LUX
LUX Deco walnut

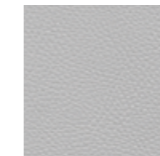


Ébano LUX
LUX Ebony

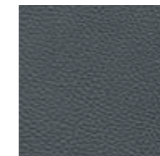
BASES (para mesas comedor) / BASES (for dining tables)
Polipiel / Synthetic leather



Q-1007



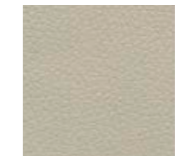
Q-1013



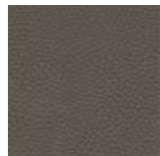
Q-1016



Q-1005



Q-1029



Q-1017

VINTAGE EDITION



HERRAJES / FITTINGS
Oro viejo / Antique gold

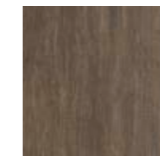


DETALLES PIEL / LEATHER DETAILS
Visión / Mink

ESTRUCTURA, PUERTAS Y CAJONES. TABLERO / STRUCTURE, DOORS AND DRAWERS. TOP
Lacado craquelado brillo / Shiny cracked lacquer



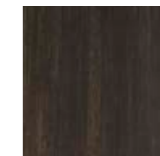
Roble centenario
Centennial oak



Gris humo
Smoke grey



Nogal Deco
Deco walnut



Ébano
Ebony

Valencia

Colección piel natural / Natural leather collection



Modena

Colección polipiel / Synthetic leather collection



COLECCIÓN ALEXANDRA

C. del Coure, sn
Parque Empresarial Carabona
Apartado de Correos 220
12530 Burriana, Castellón, SPAIN
Tel. 964 513 451

Diseño y maquetación:

Design and page layout:
Colección Alexandra

Dirección de arte:

Art direction:
Colección Alexandra

Fotografía:

Photographs:
Ángelsegurafoto
Imago Studio
Paula Martínez
Alfonso Calza

Impreso en España:

Printed in Spain:
La imprenta CG

www.coleccionalexandra.com

www.coleccionalexandra.com